

47

SIEBENZEHN TAFELN

ZUR

PRAKTISCHEN ANLEITUNG ZUM ERDBAU

VON

L. HENZ,

KÖNIGLICH PREUSS. GEHEIMER REGIERUNGS- UND BAURATH.

ZWEITE AUFLAGE.

NACH DEM TODE DES VERFASSERS BEARBEITET

VON

FERDINAND PLESSNER

EISENBahn - BAUMEISTER UND BAU - UNTERNEHMER.

---

BERLIN,

VERLAG VON ERNST & KORN.

(GROPIUS'SCHE BUCH- UND KUNSTHANDLUNG.)

1868.

936 # 445.



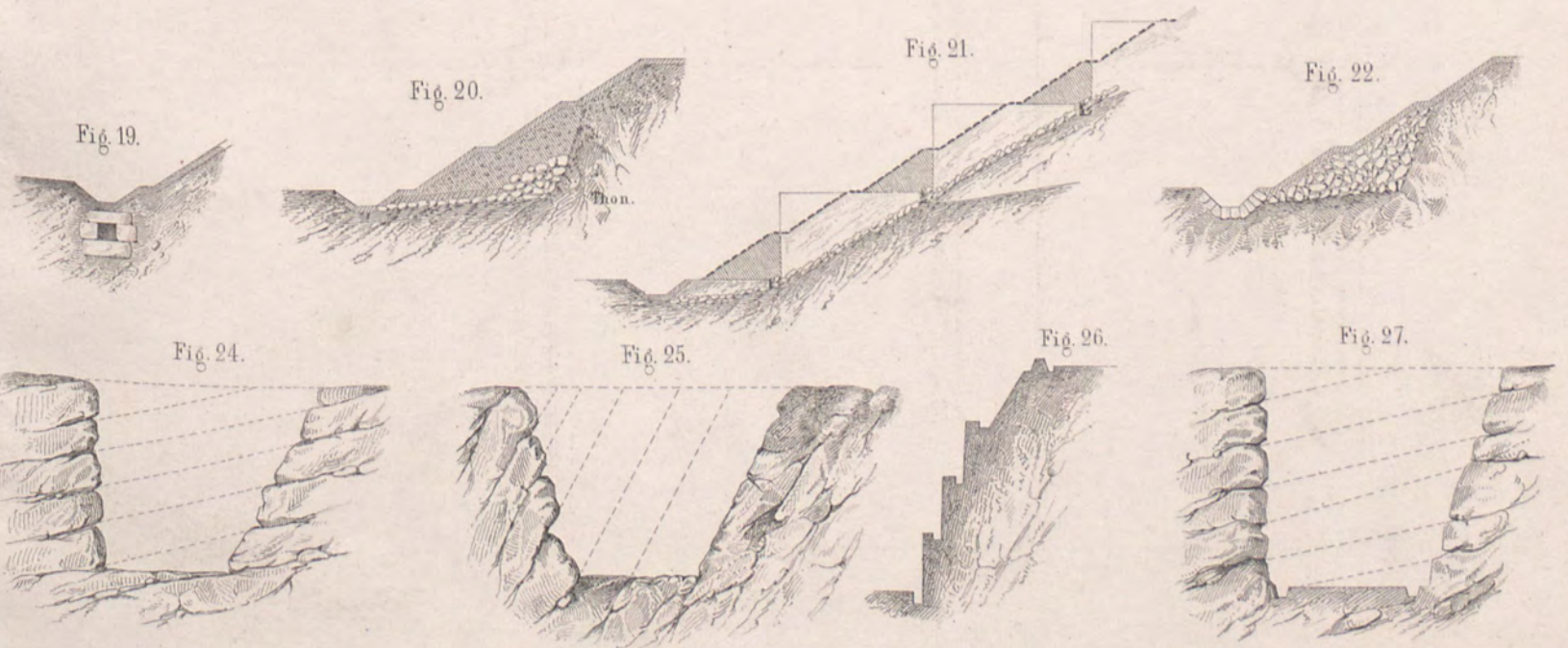
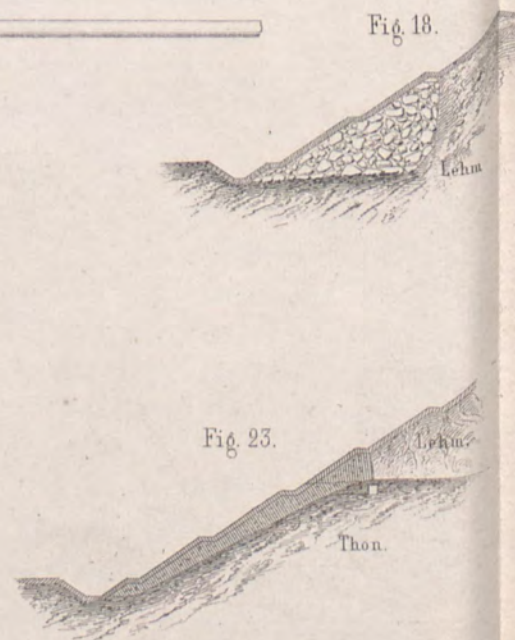
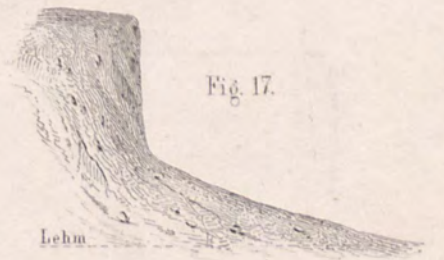
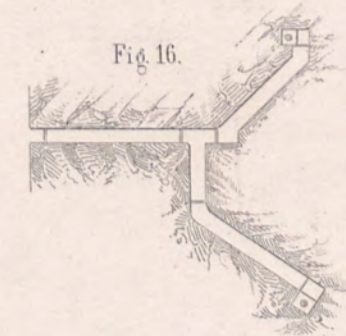
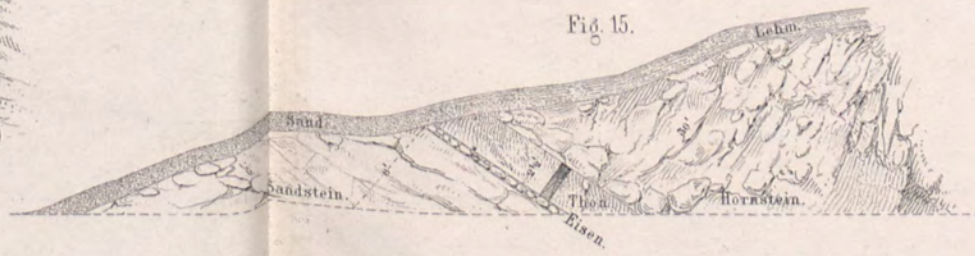
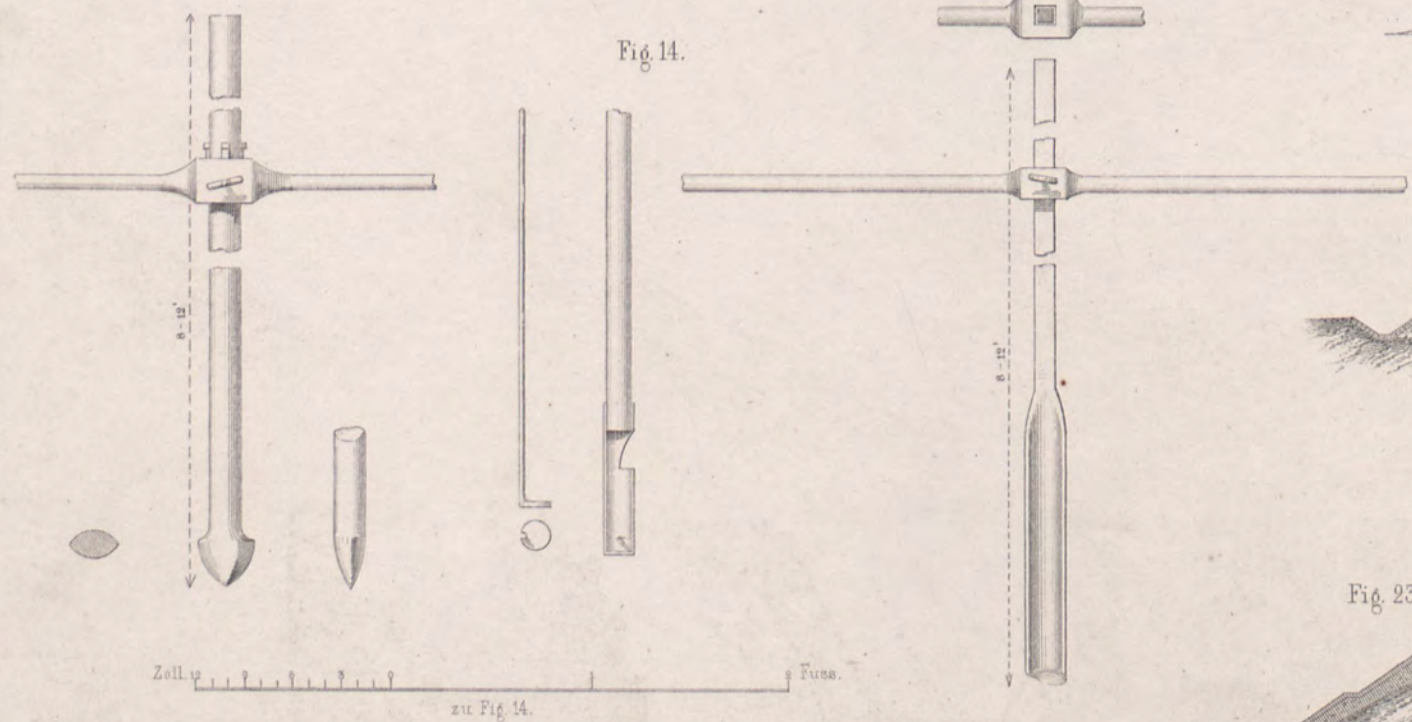
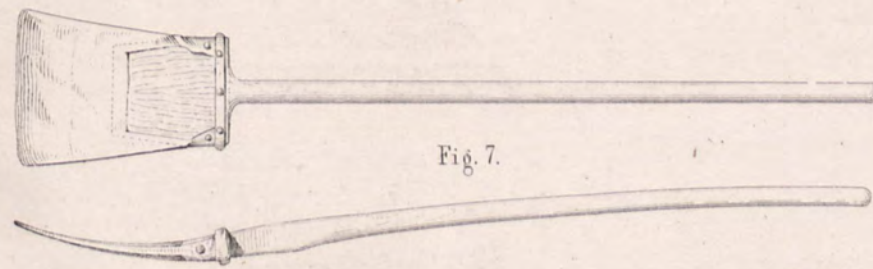
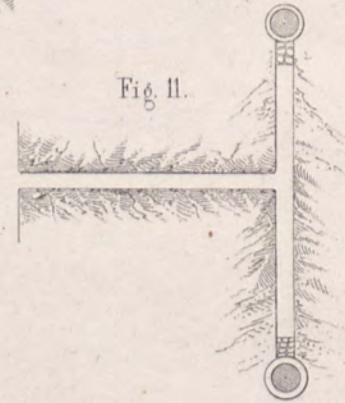
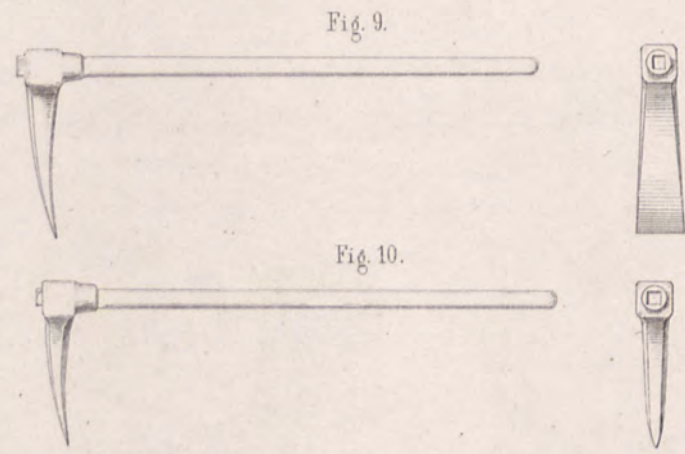
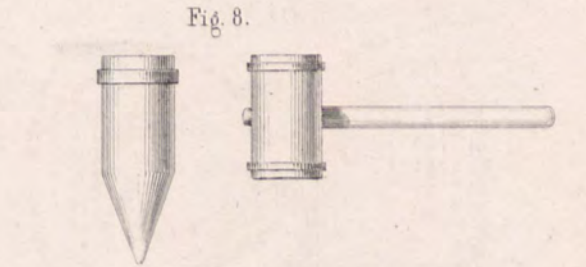
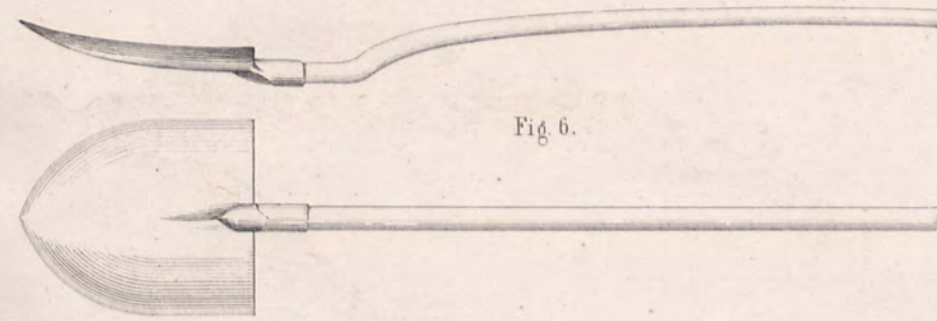
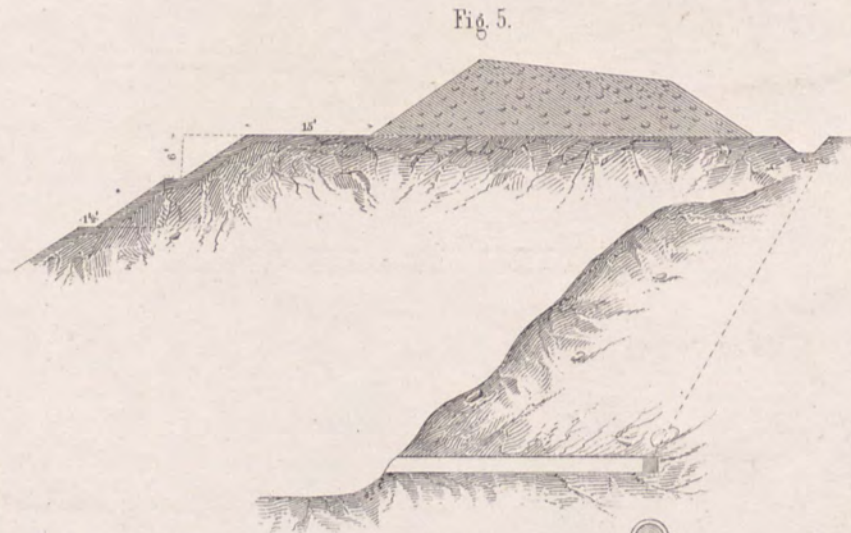
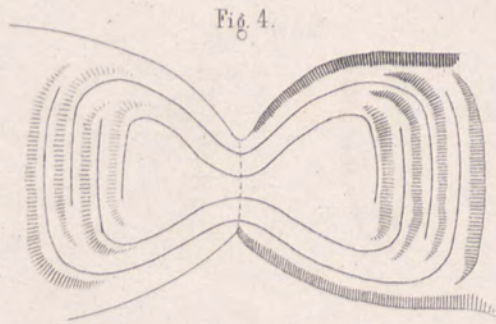
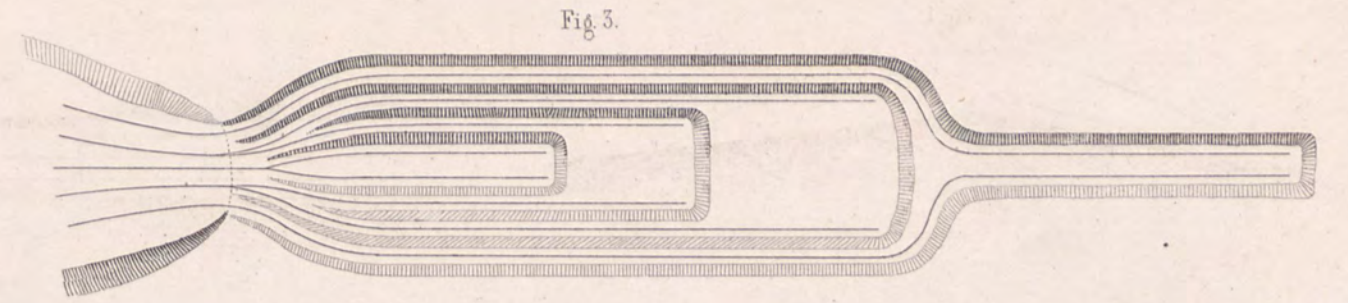
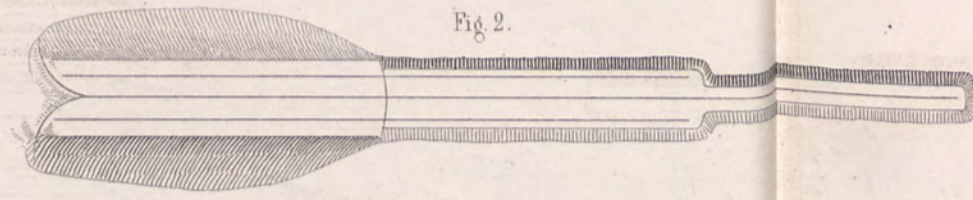
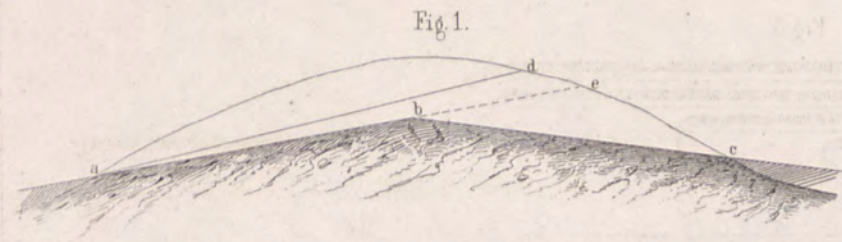


Fig. 28.

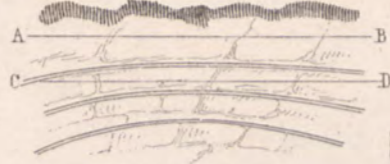
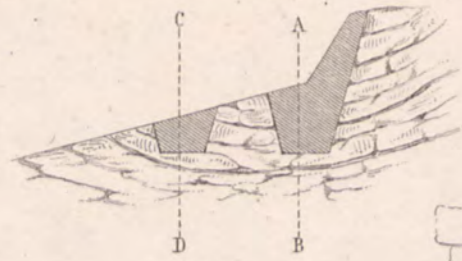


Fig. 29.

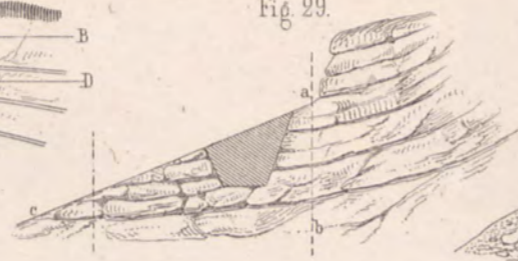


Fig. 30.



Fig. 31.



Fig. 32.

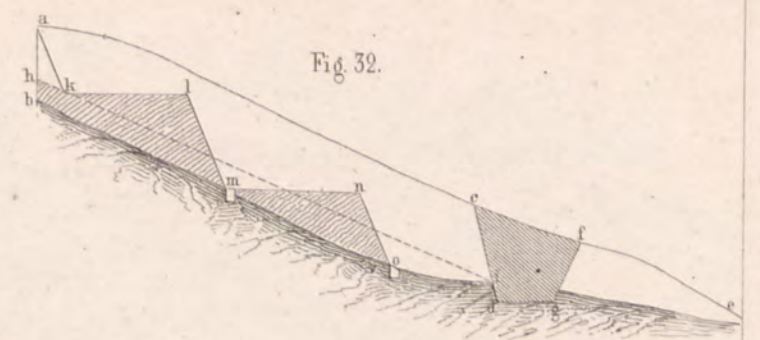


Fig. 33.

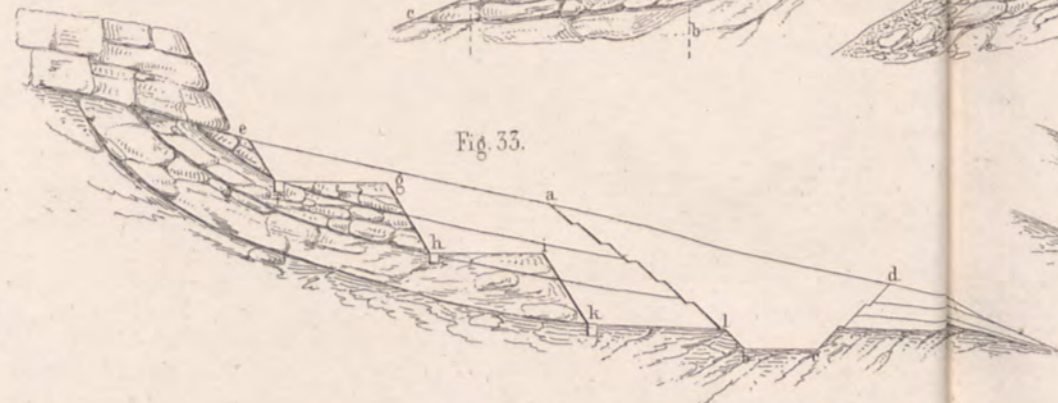


Fig. 34.

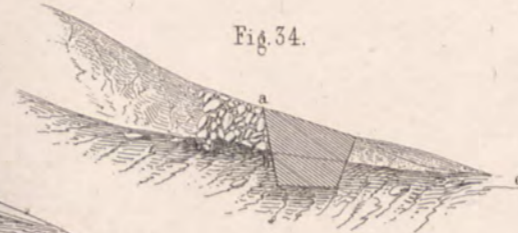


Fig. 37.

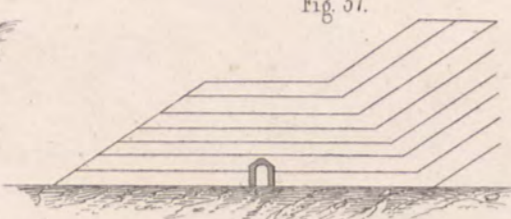


Fig. 38.

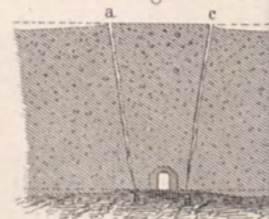


Fig. 39.

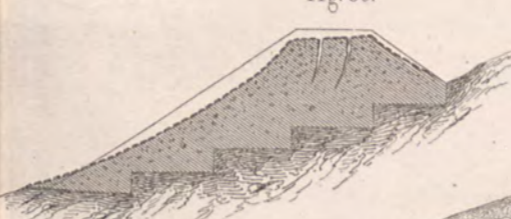


Fig. 40.

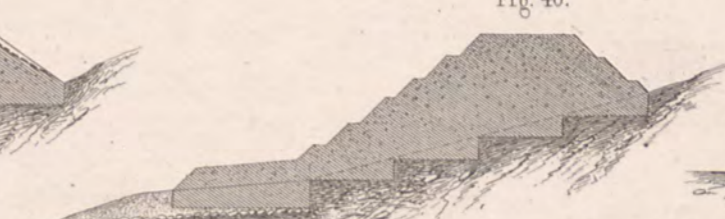


Fig. 41.

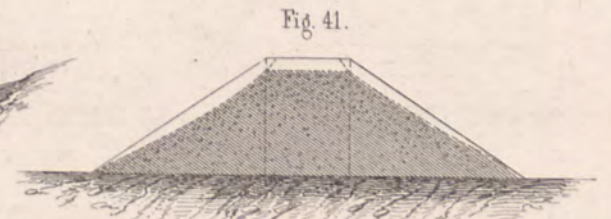


Fig. 35.

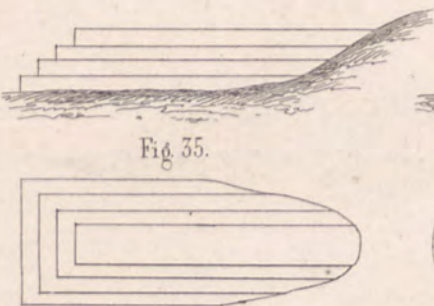


Fig. 36.

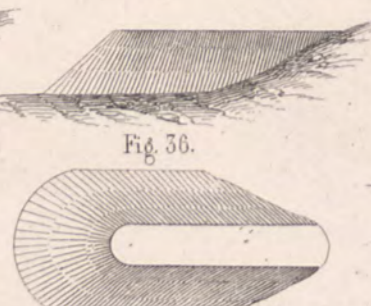


Fig. 44.

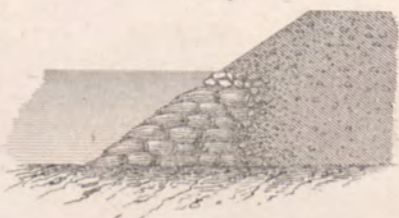


Fig. 45.



Fig. 46.



Fig. 47.

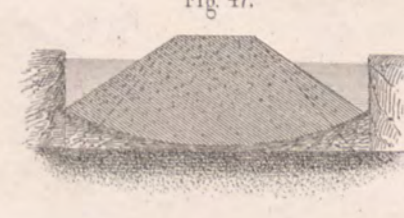


Fig. 48.

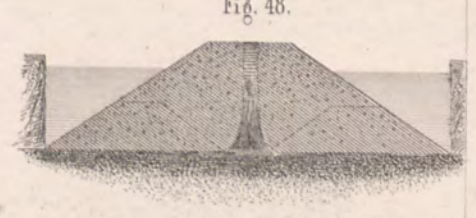


Fig. 42.

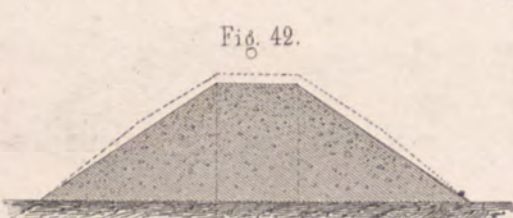


Fig. 43.



Fig. 51.

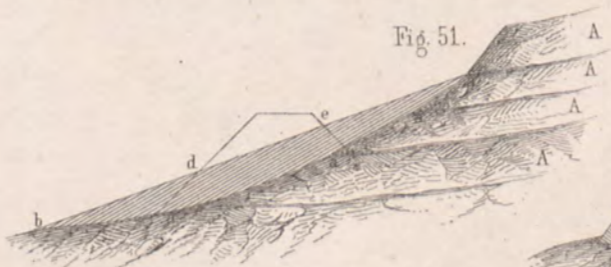


Fig. 52.

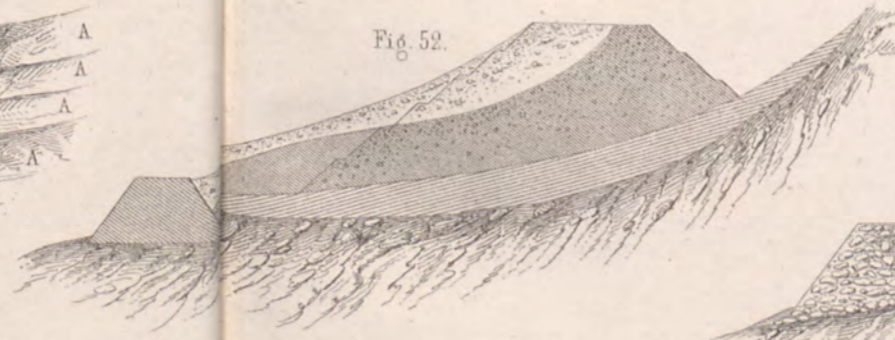


Fig. 53.

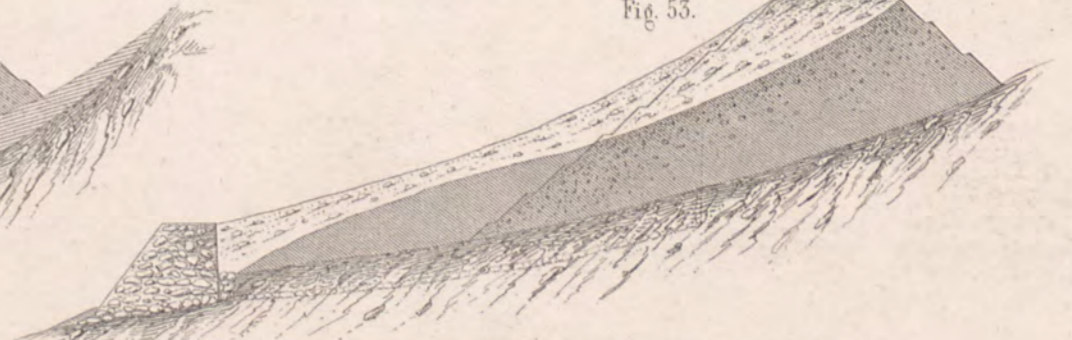


Fig. 49.



Fig. 50.

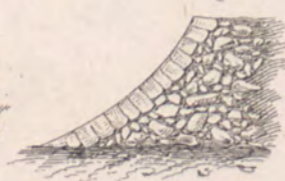


Fig. 54.

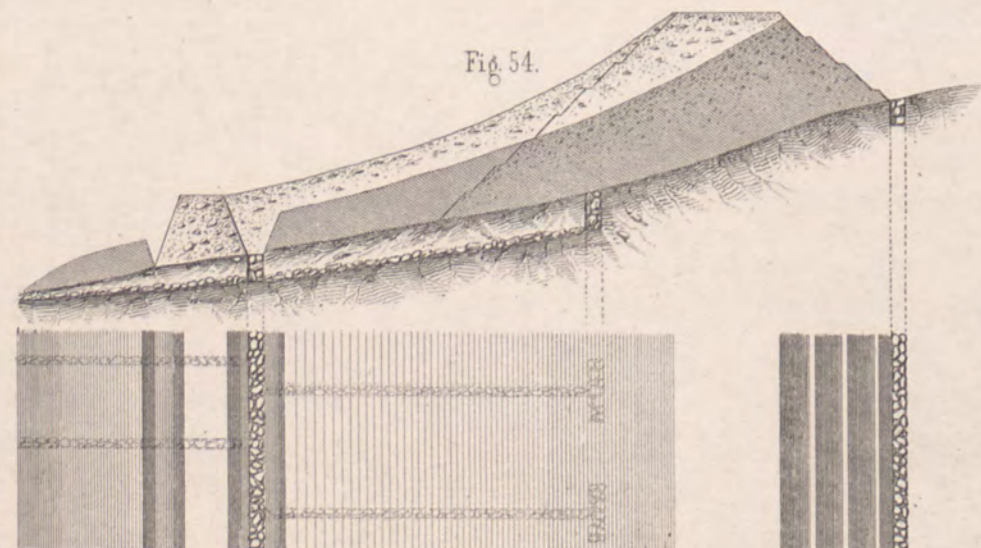


Fig. 55.

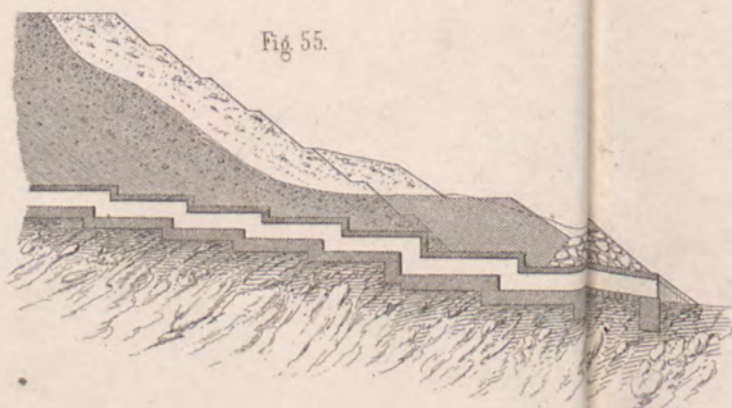


Fig. 56.

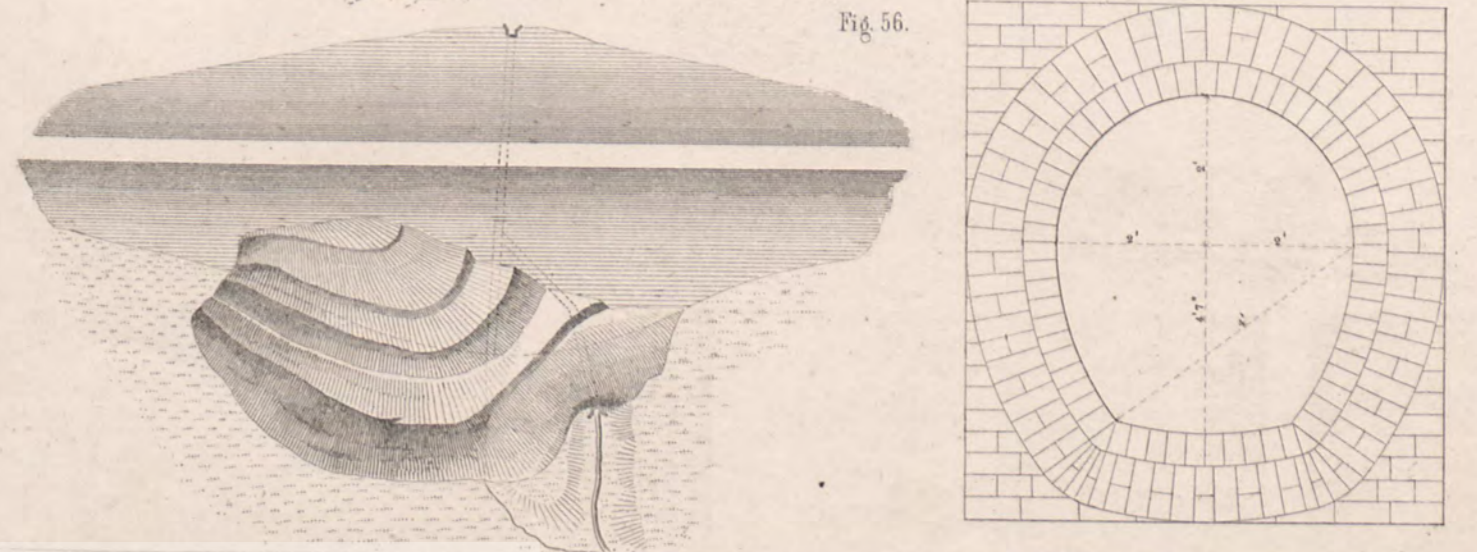


Fig. 57.

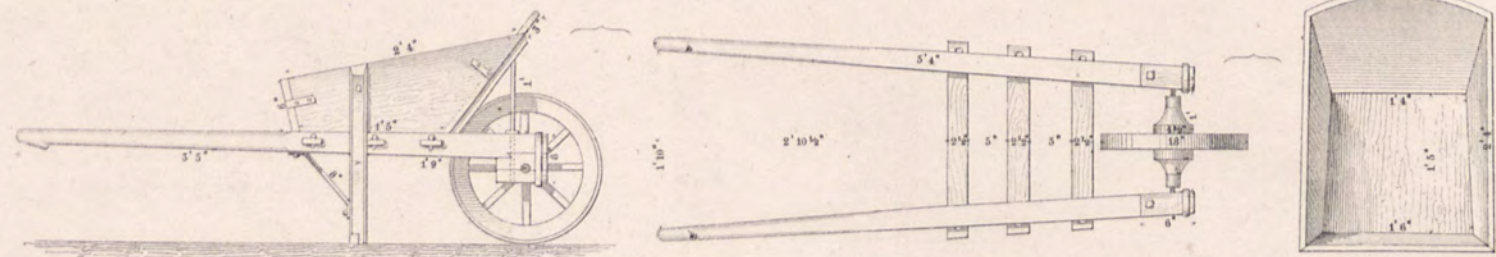


Fig. 58.

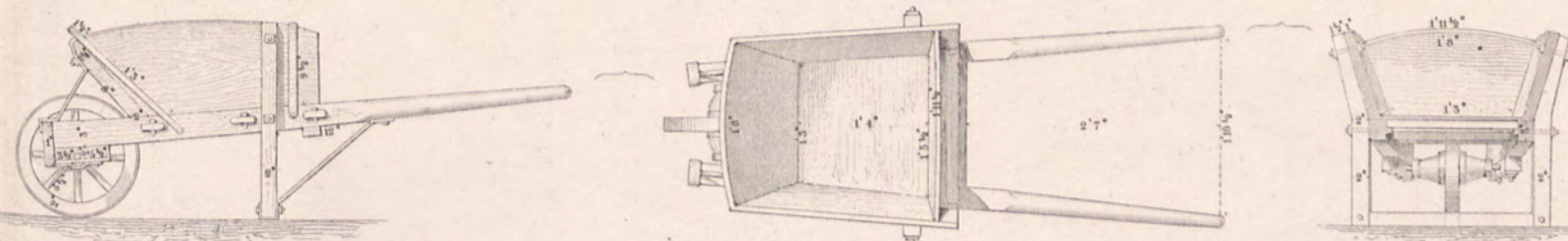


Fig. 59.



Fig. 60.

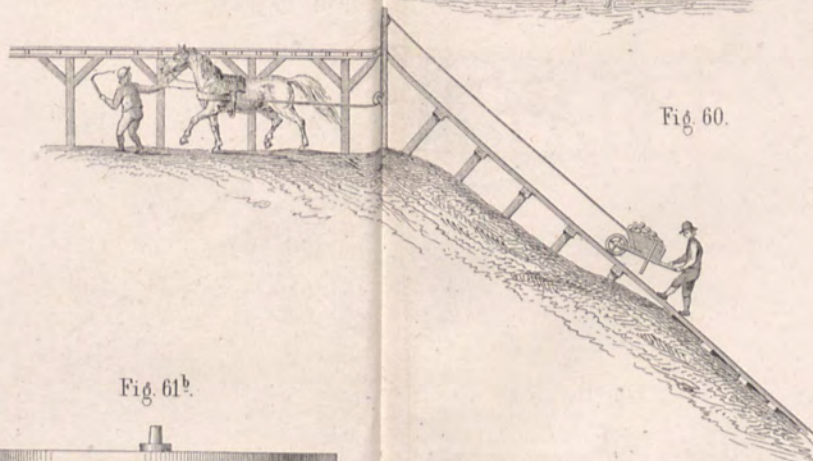


Fig. 61<sup>a</sup>.

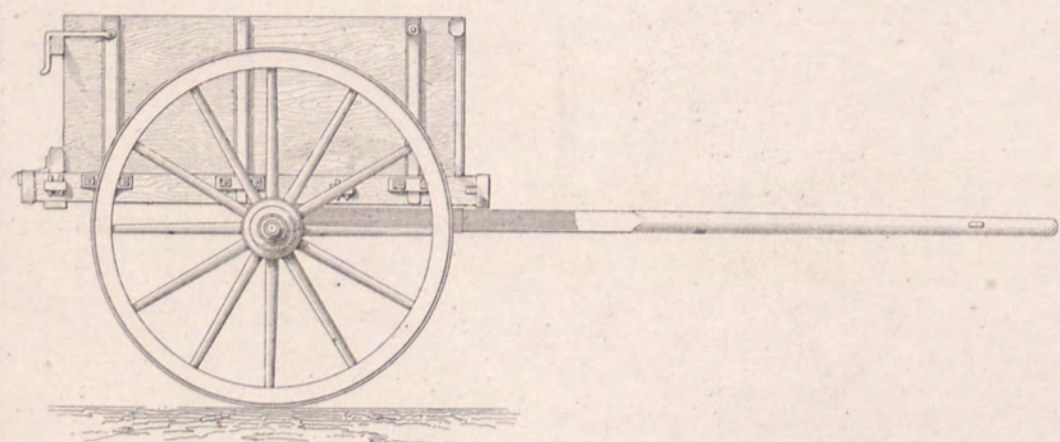


Fig. 61<sup>b</sup>.

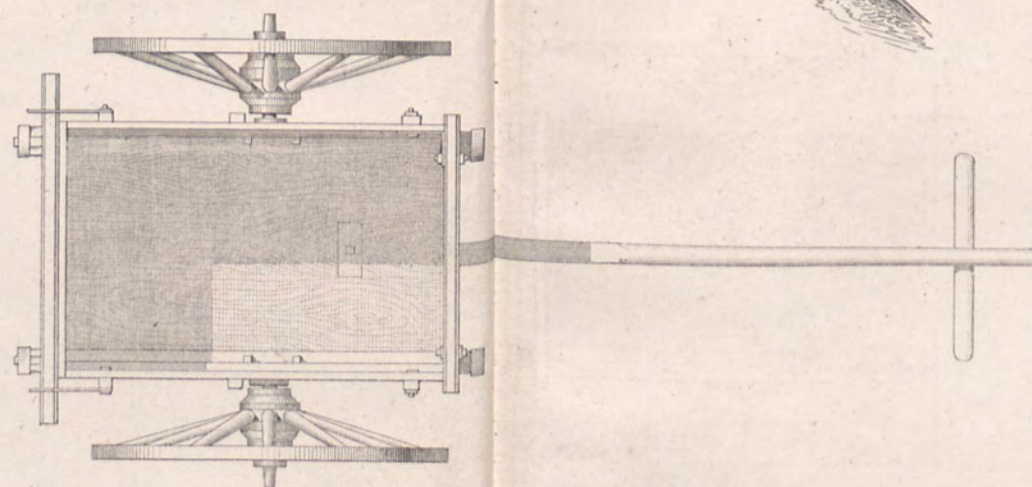


Fig. 61<sup>c</sup>.

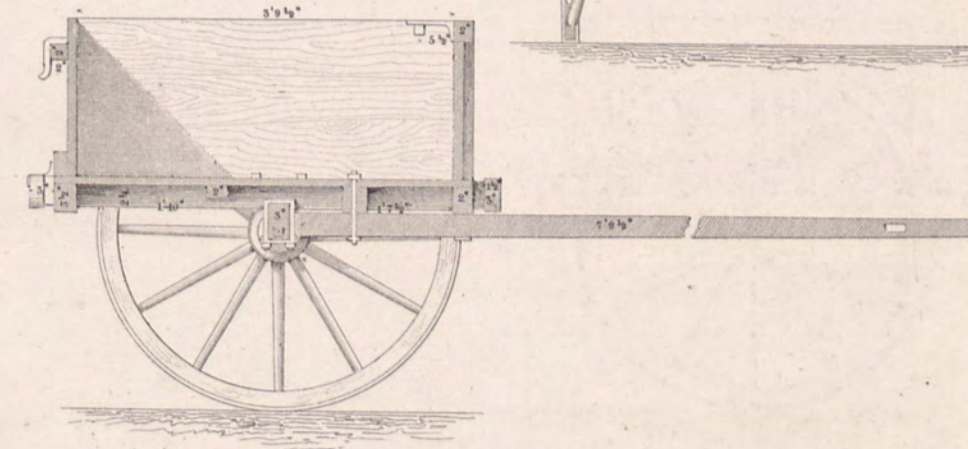


Fig. 61<sup>d</sup>.

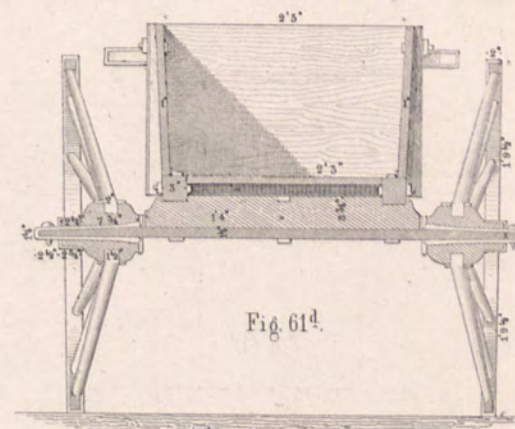


Fig. 62<sup>a</sup>.

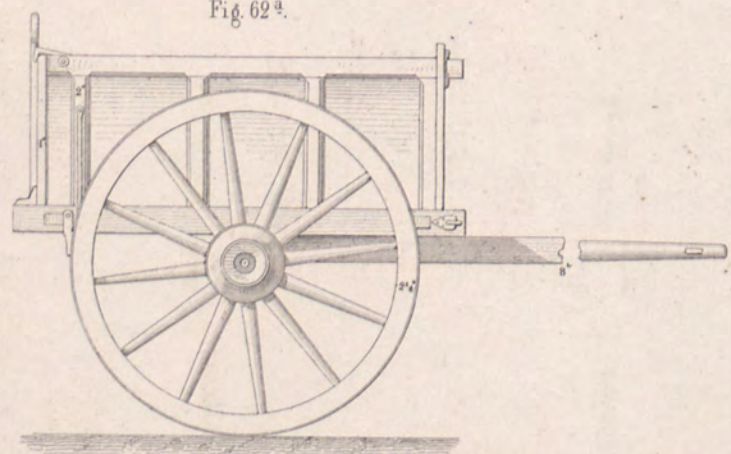


Fig. 62<sup>b</sup>.

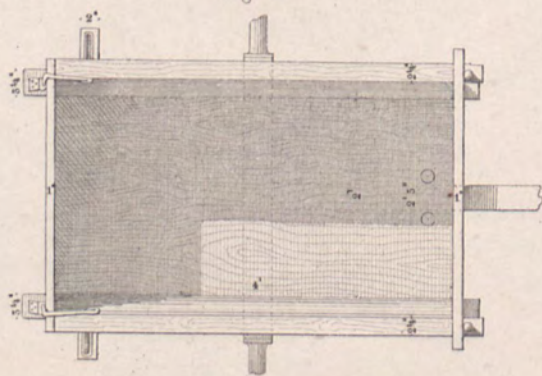


Fig. 62<sup>c</sup>.

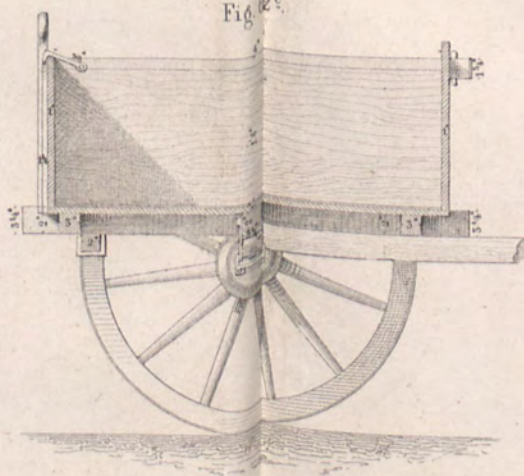


Fig. 62<sup>d</sup>.

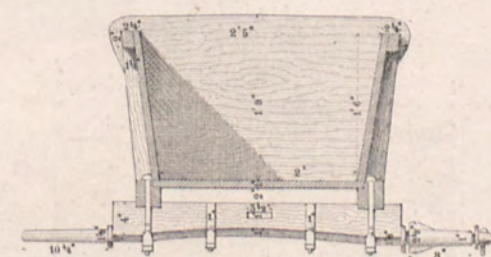
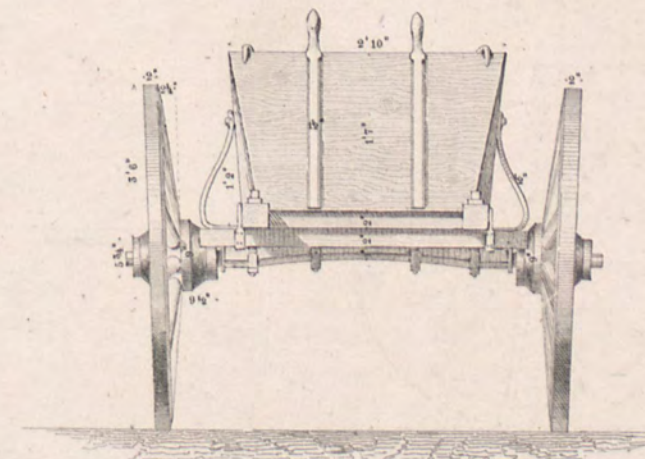


Fig. 62<sup>e</sup>.



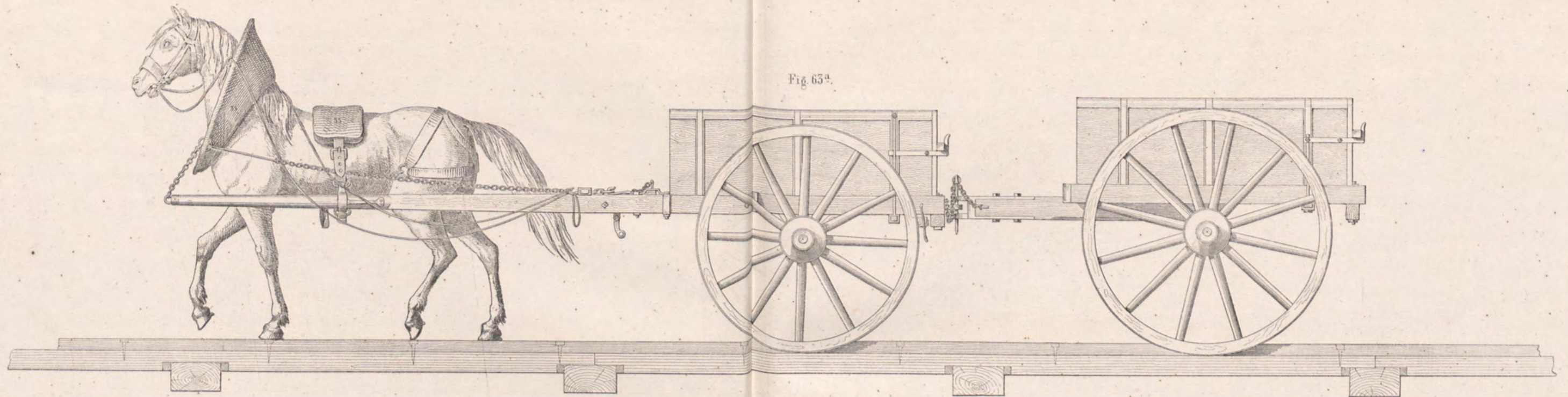


Fig. 63a.

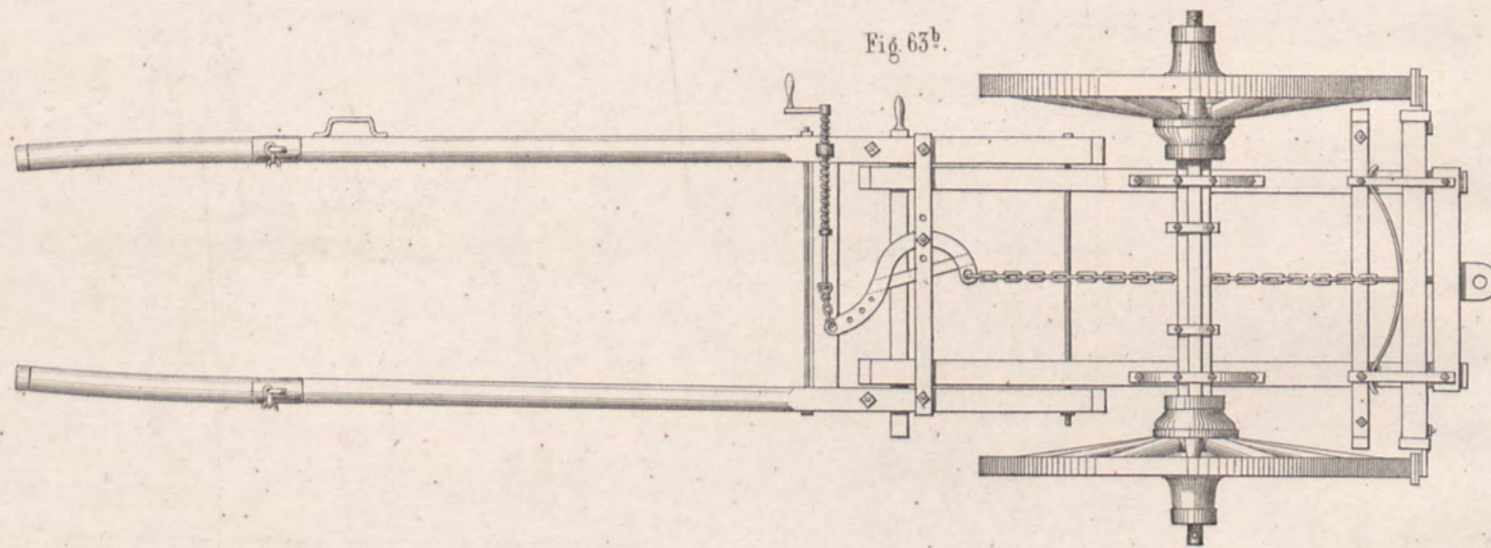


Fig. 63b.

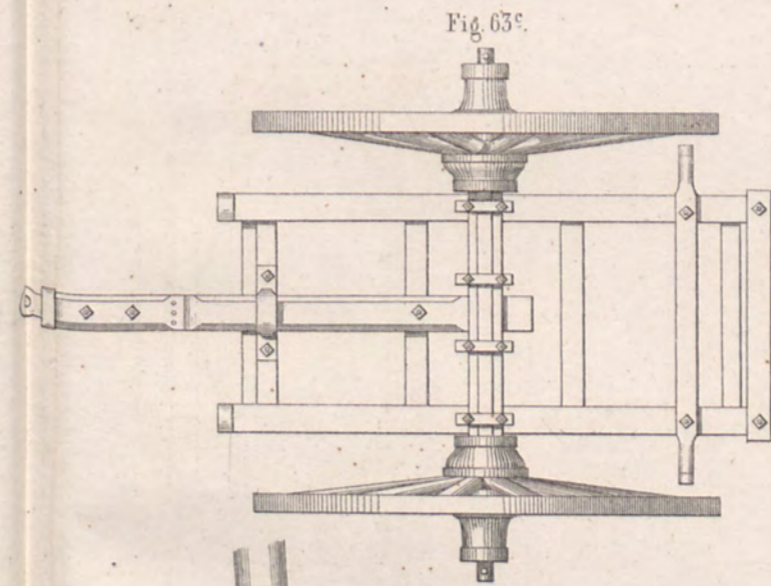


Fig. 63c.

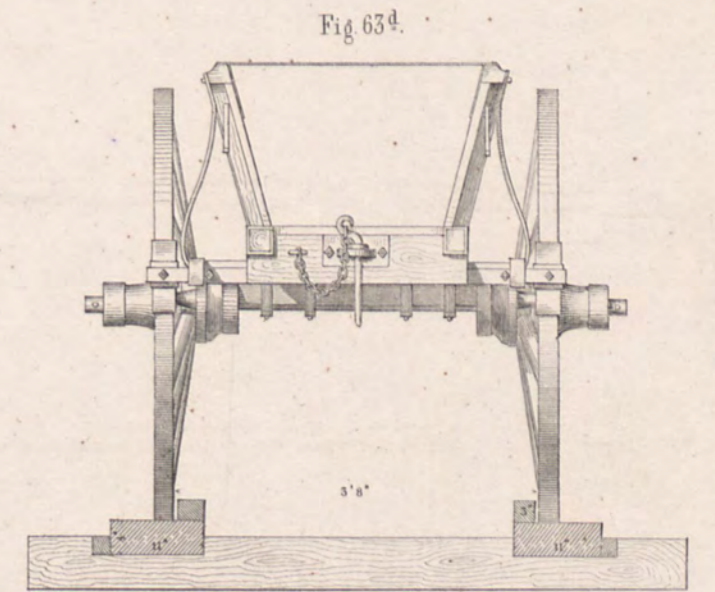


Fig. 63d.

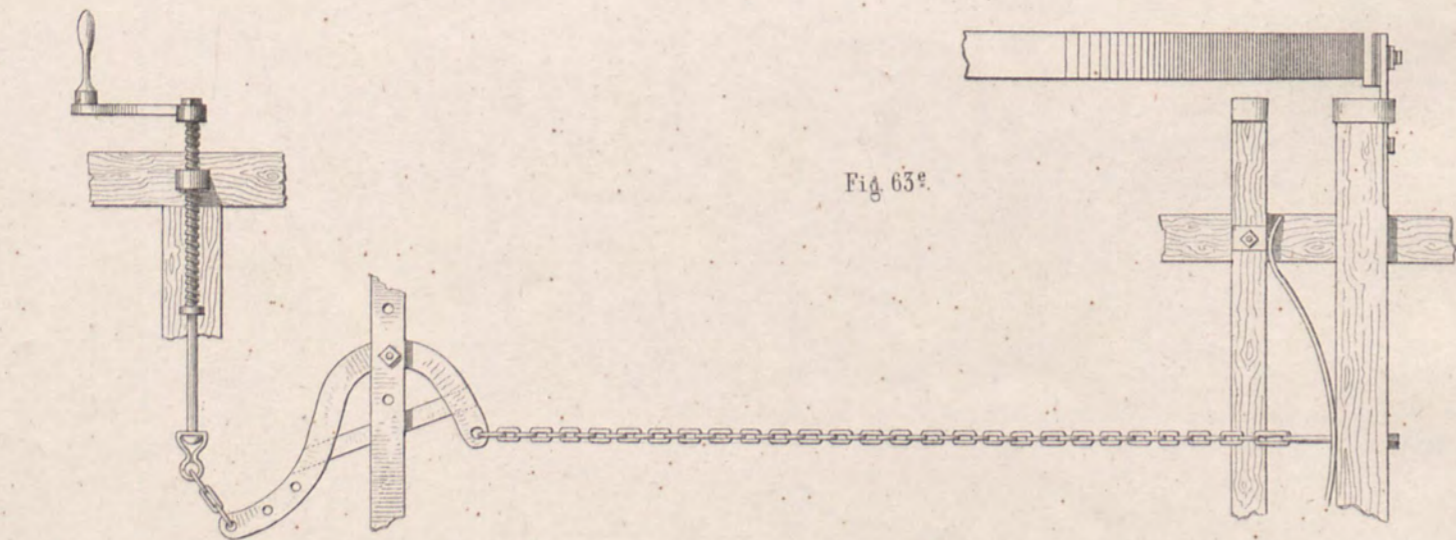


Fig. 63e.

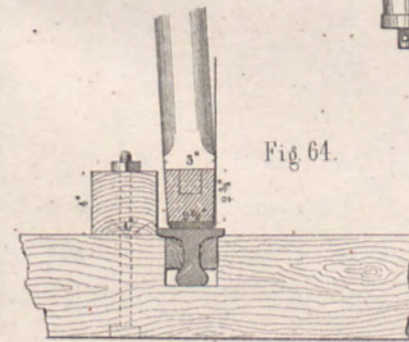


Fig. 64.



Fig. 65.

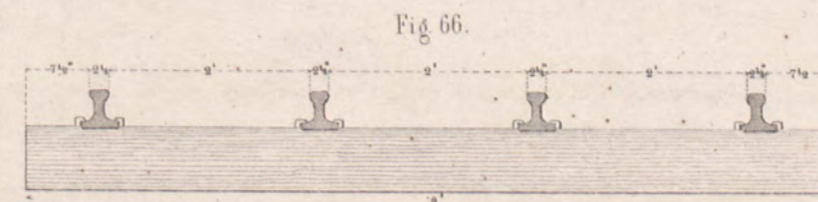


Fig. 66.

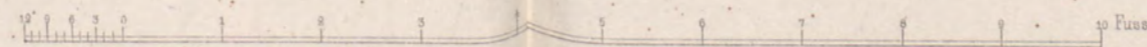


Fig. 67.

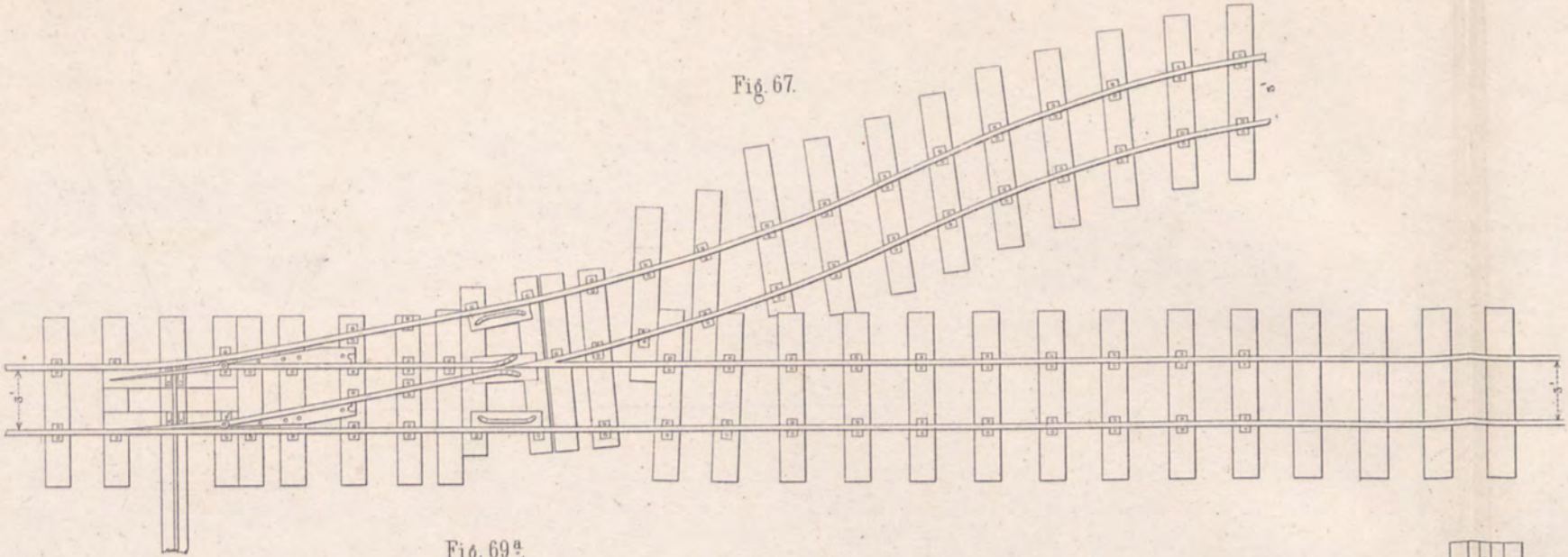


Fig. 68<sup>a</sup>.

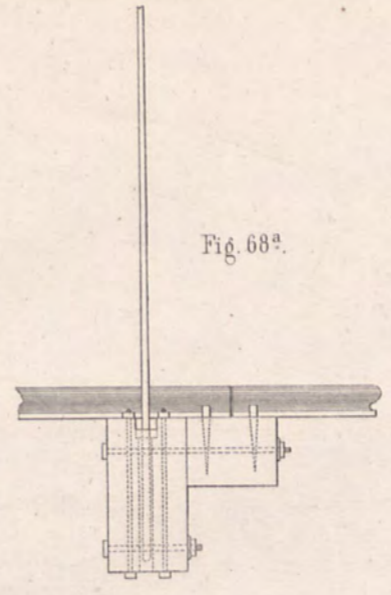


Fig. 68<sup>b</sup>.

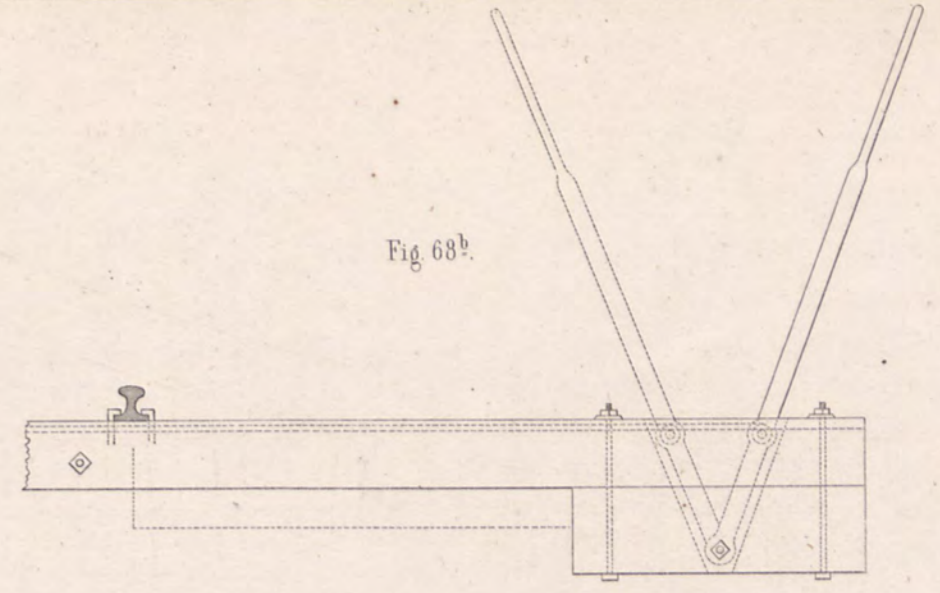


Fig. 69<sup>a</sup>.

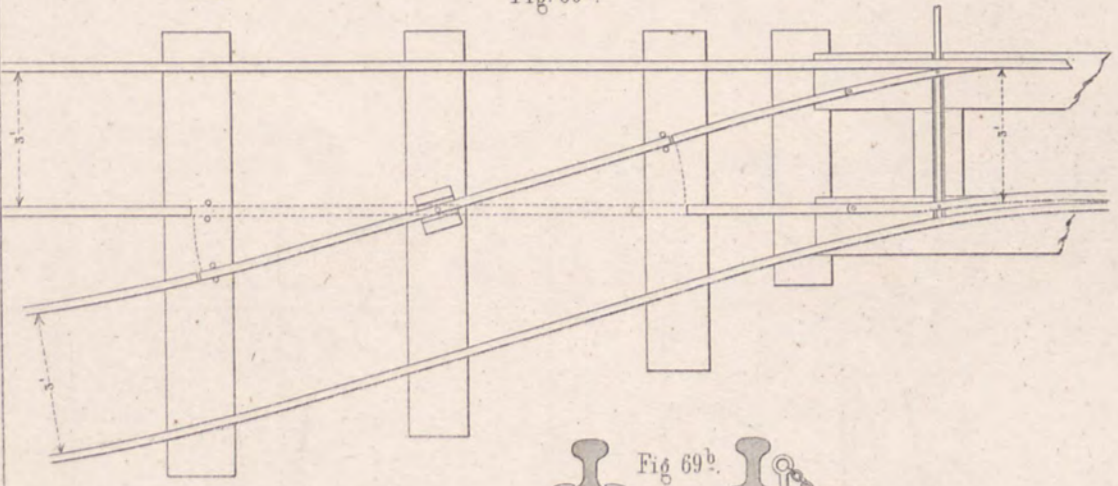


Fig. 68<sup>c</sup>.

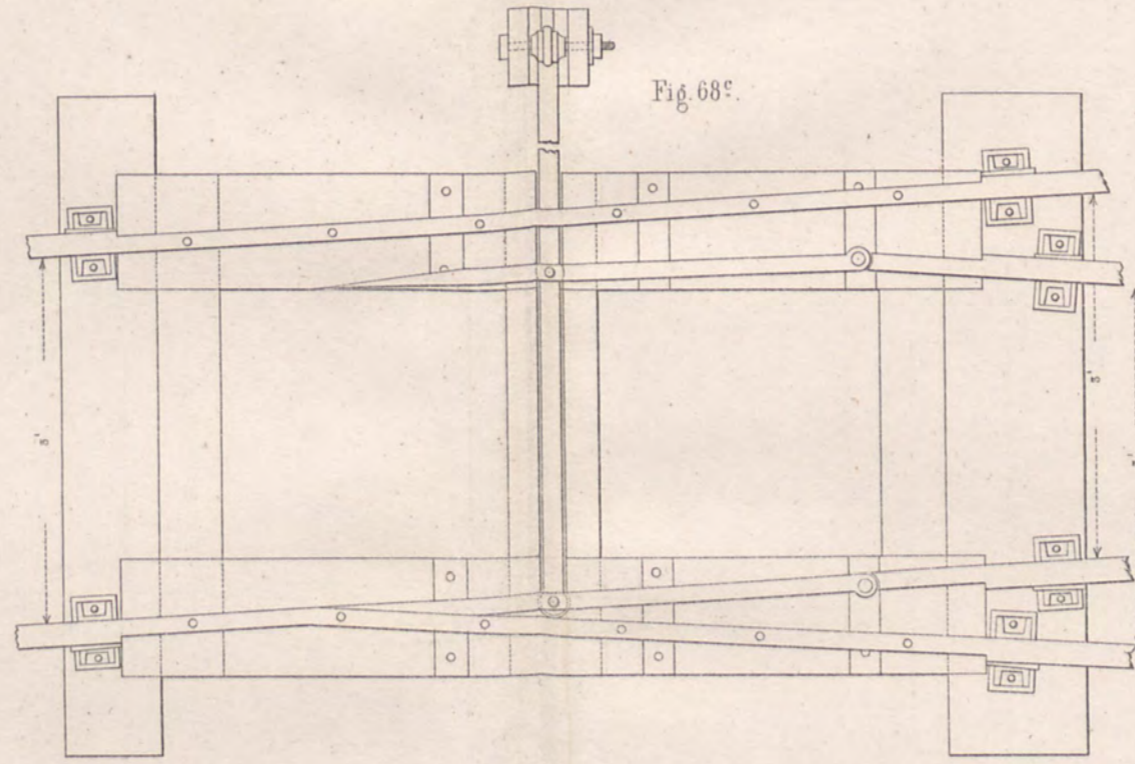


Fig. 69<sup>b</sup>.

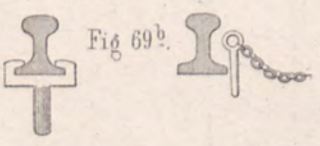


Fig. 69<sup>c</sup>.

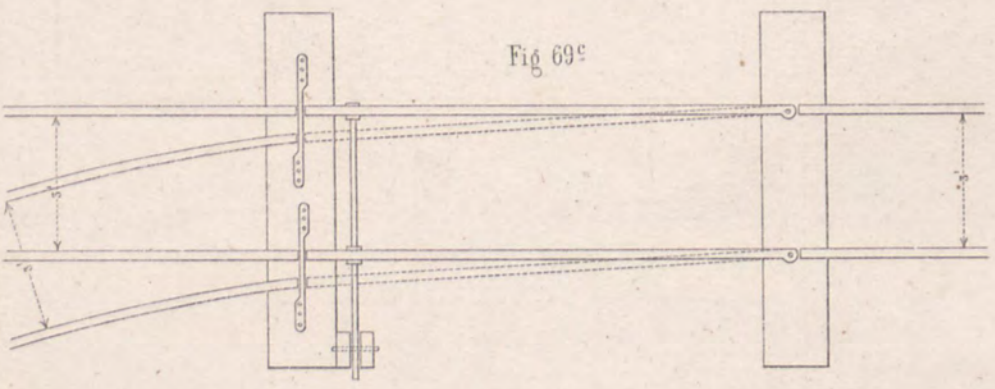


Fig. 68<sup>d</sup>.

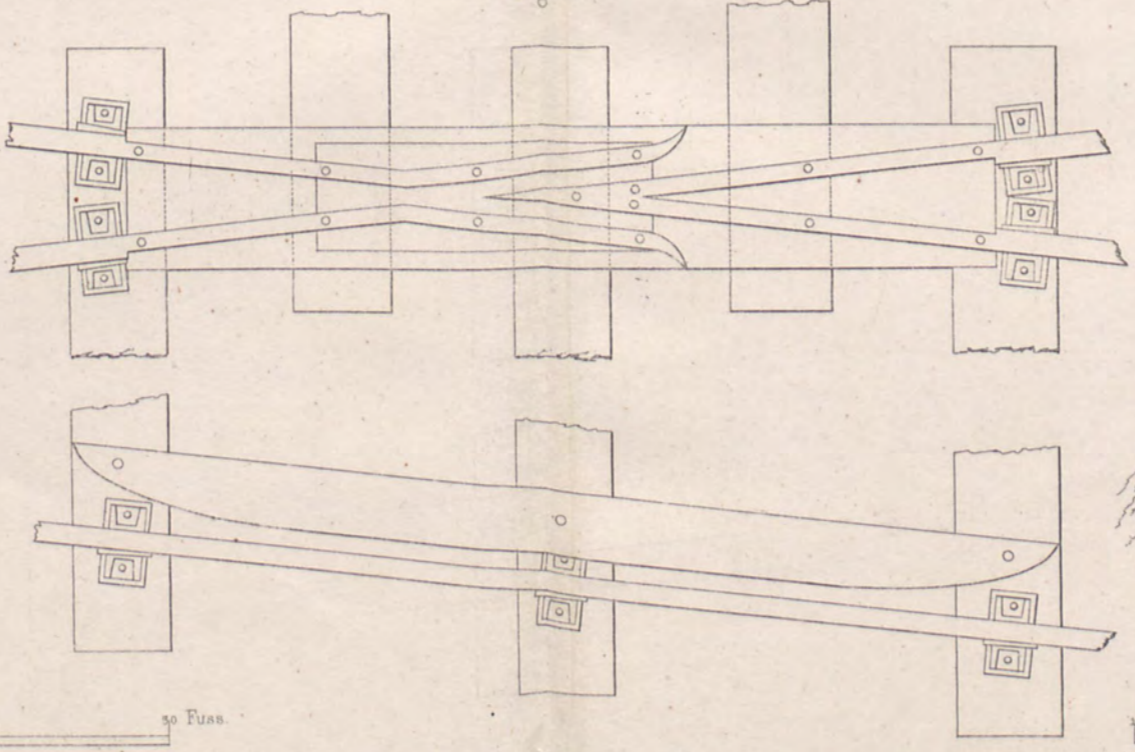


Fig. 70.

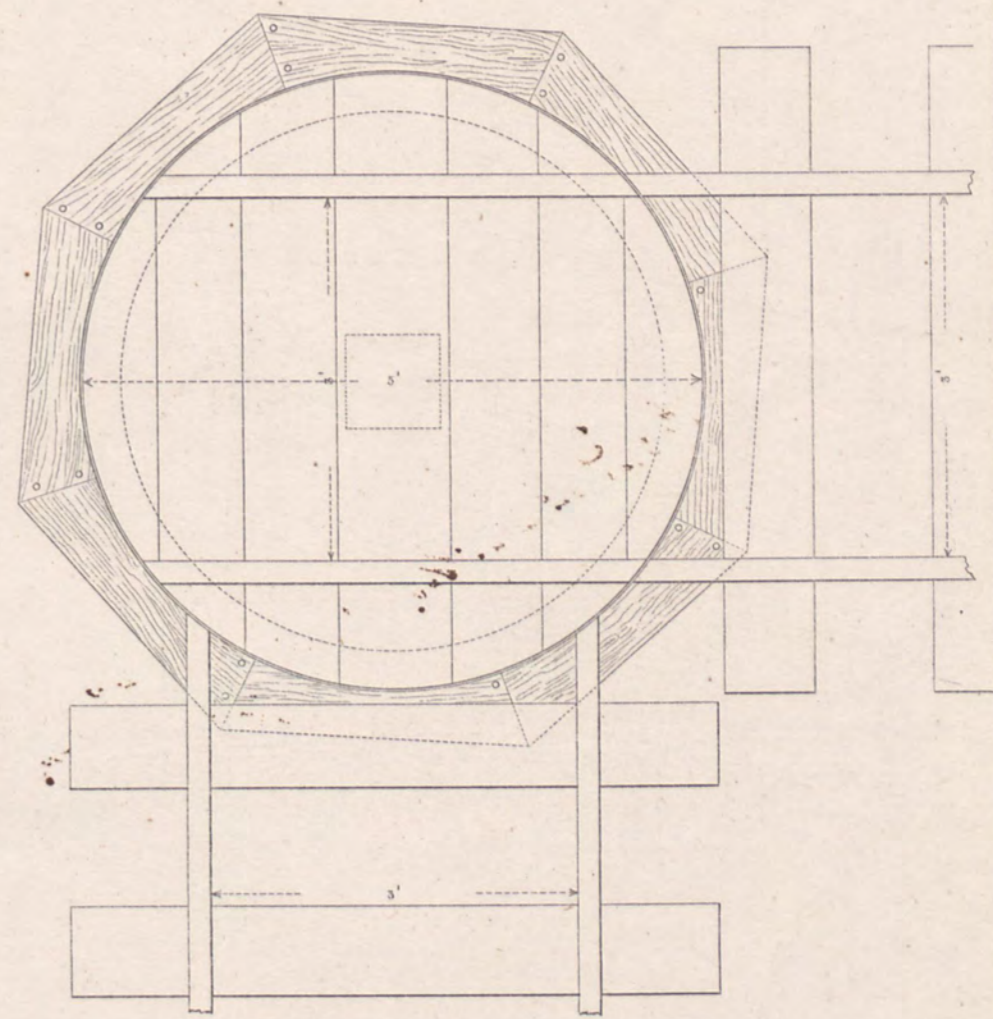
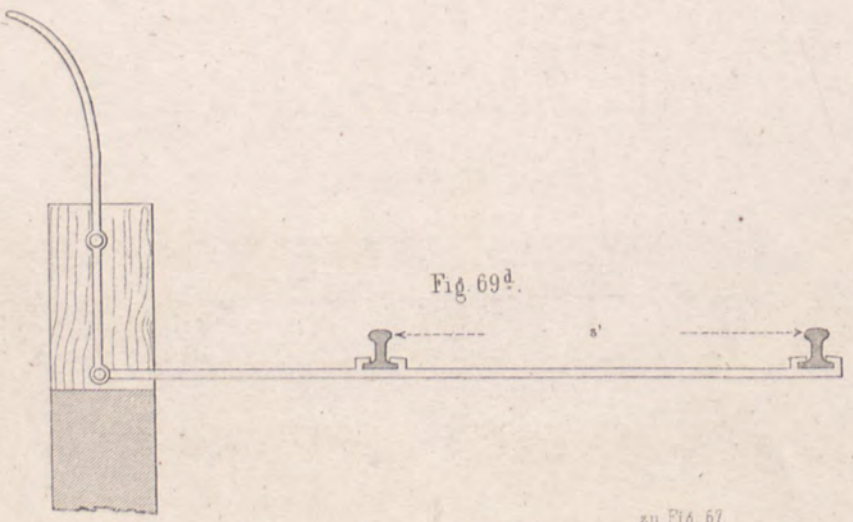
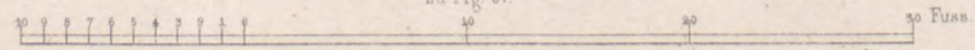


Fig. 69<sup>d</sup>.



zu Fig. 67.



zu Fig. 68, 70.

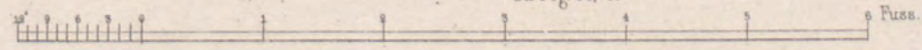


Fig. 71.

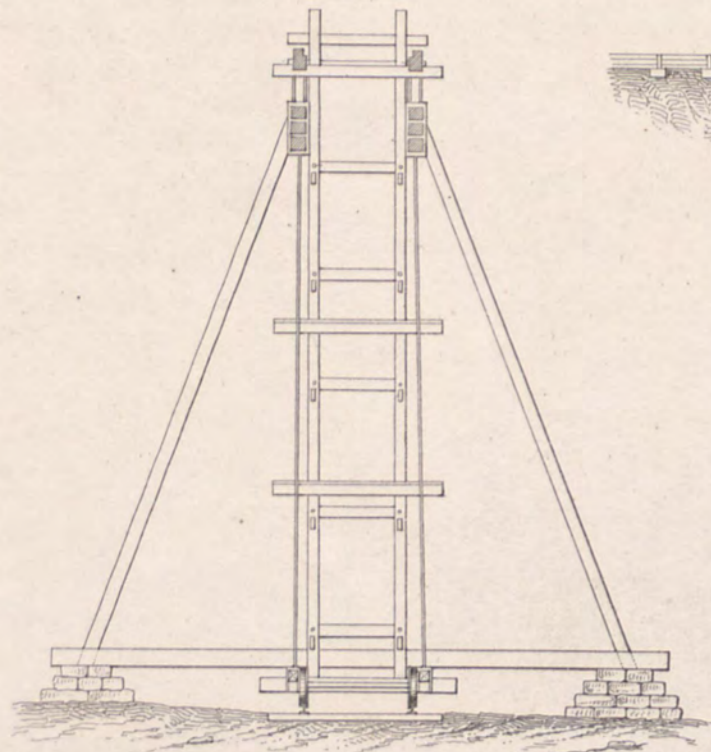


Fig. 72.

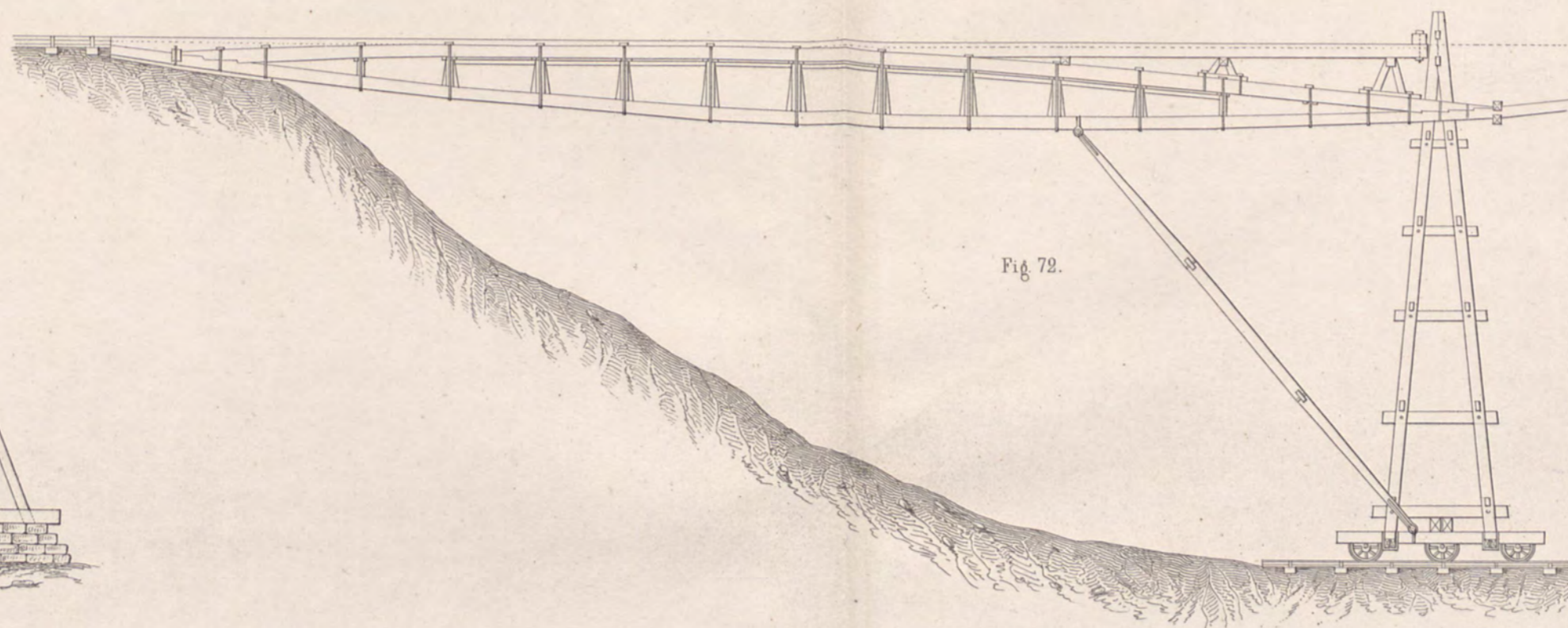


Fig. 73.

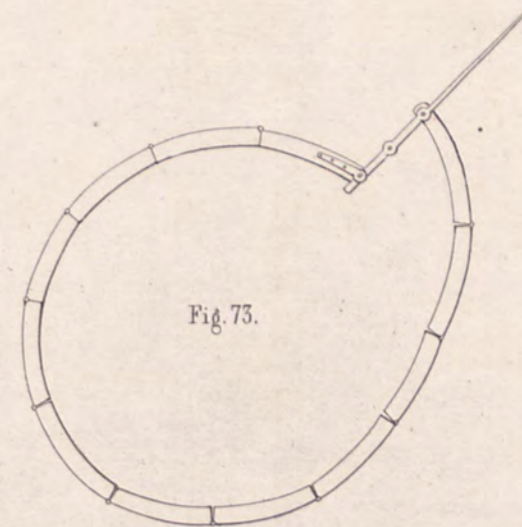


Fig. 76.

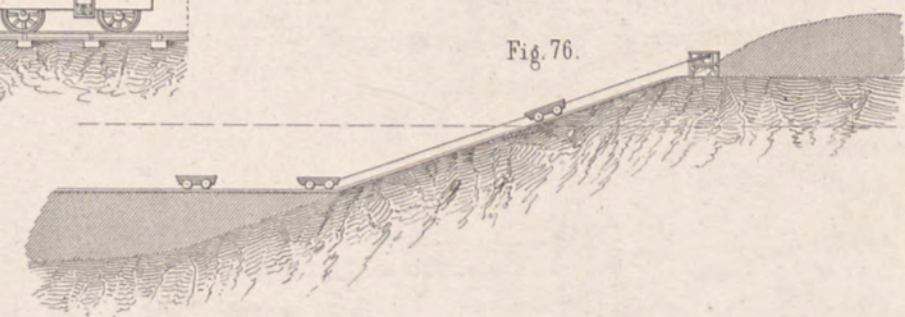


Fig. 75.

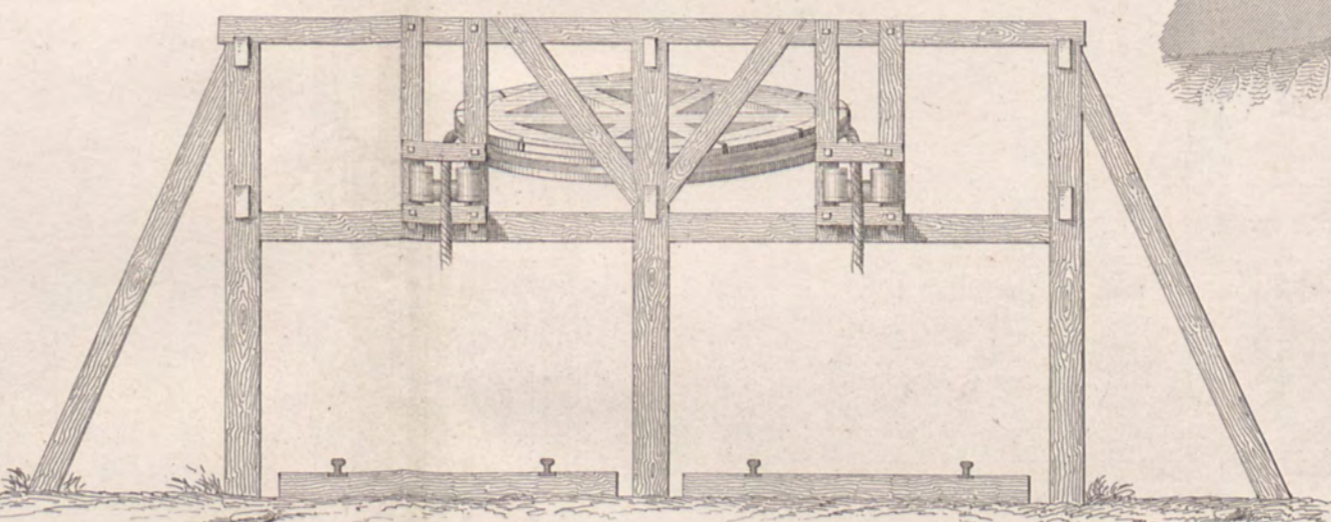


Fig. 74.

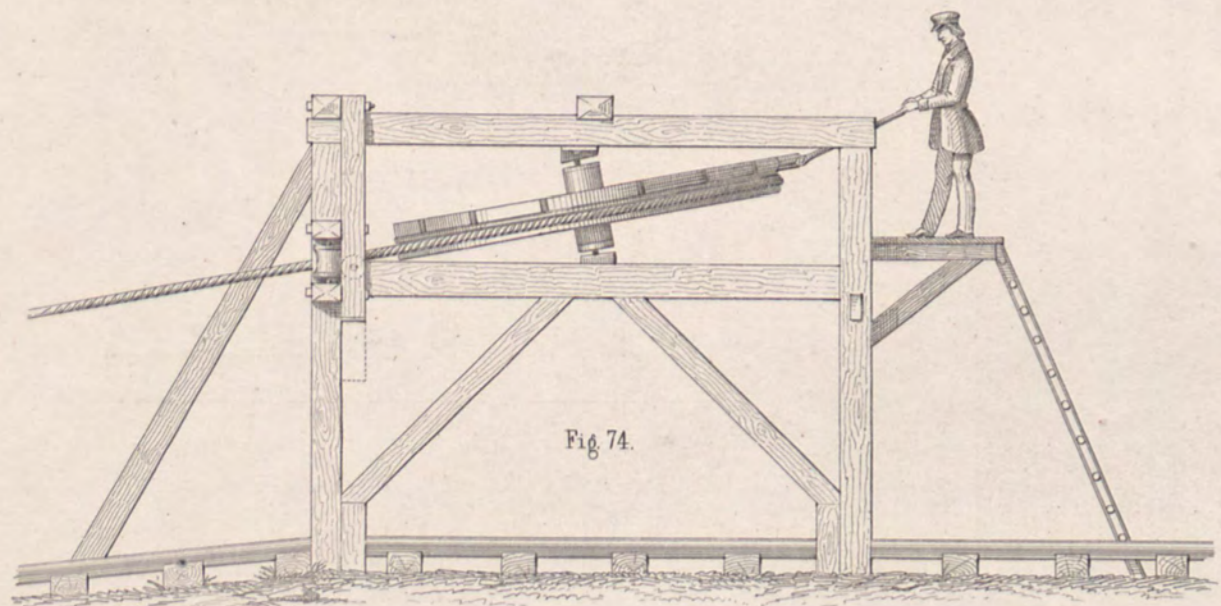


Fig. 77.

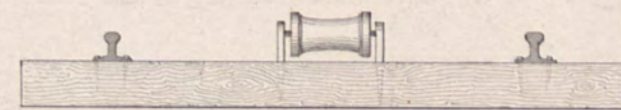


Fig. 78.



Fig. 79.

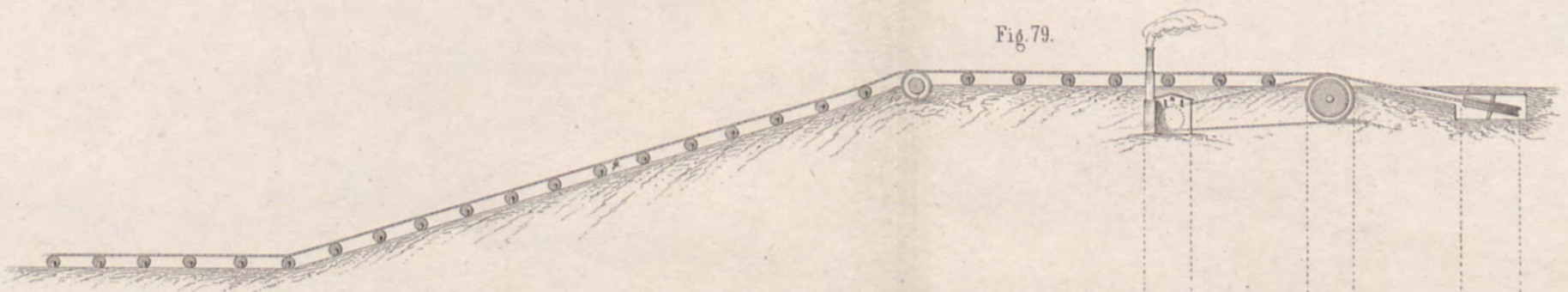
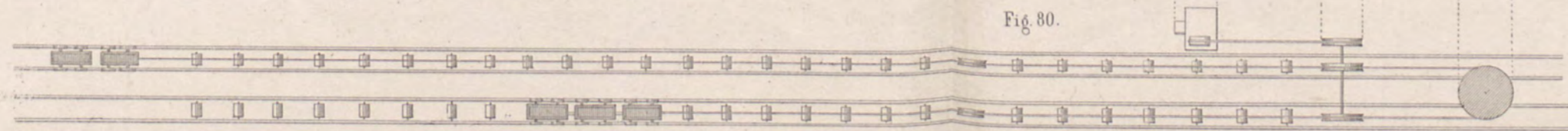
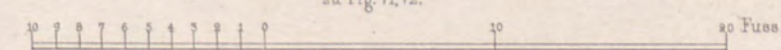


Fig. 80.



zu Fig. 71, 72.



zu Fig. 74, 75.

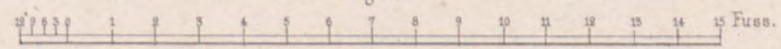




Fig. 81.

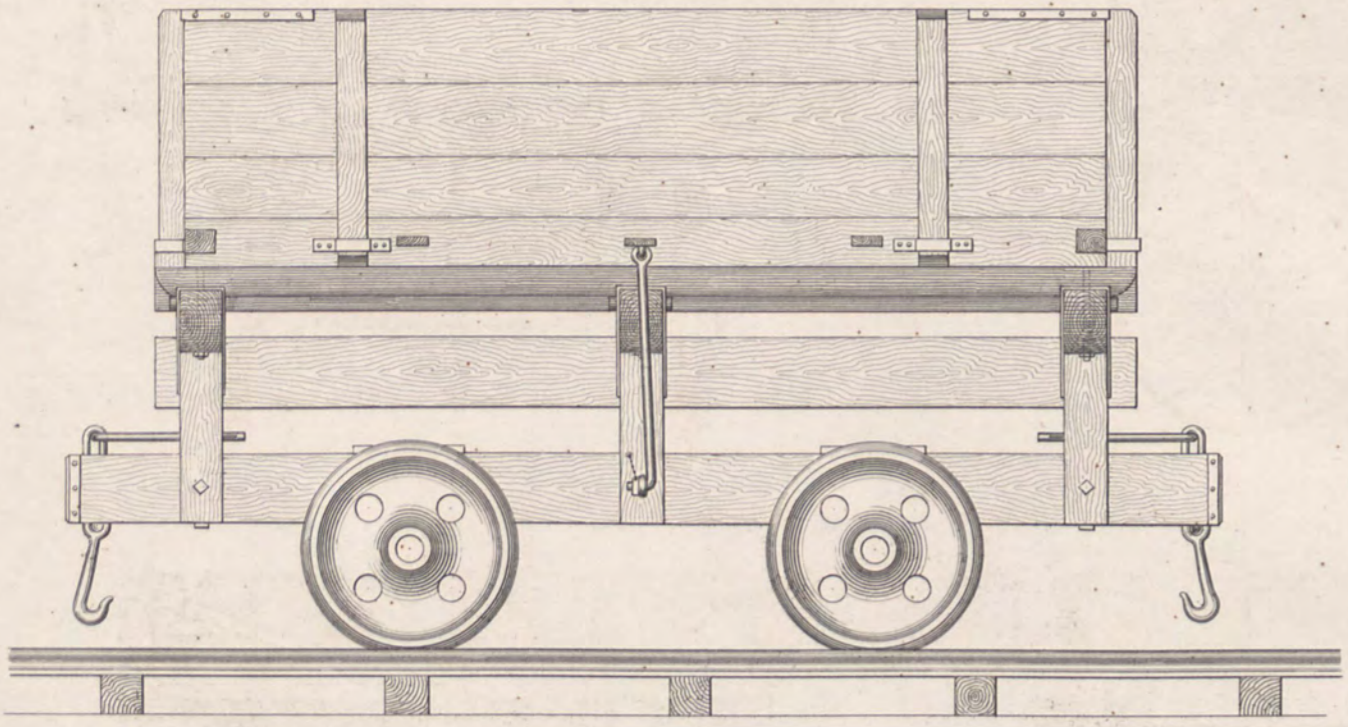
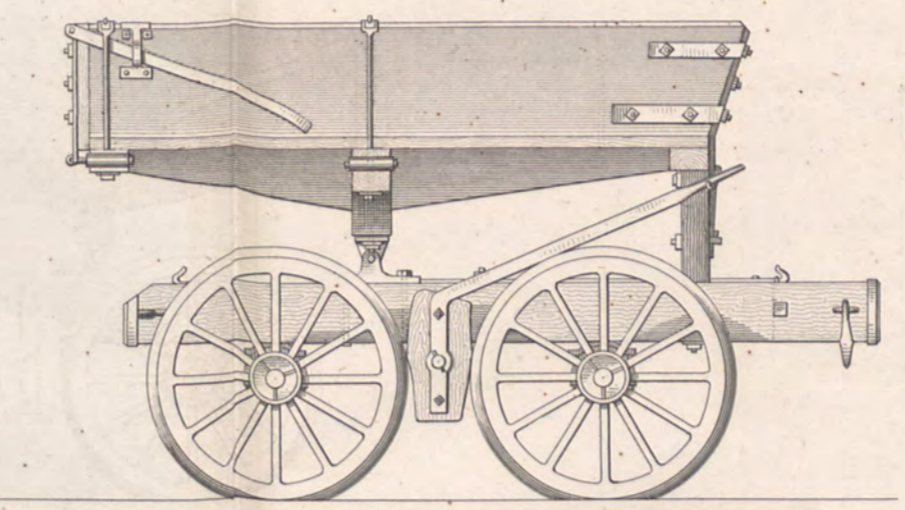


Fig. 83.



Vorkipper von der Westphal. Eisenbahn.

Fig. 84.

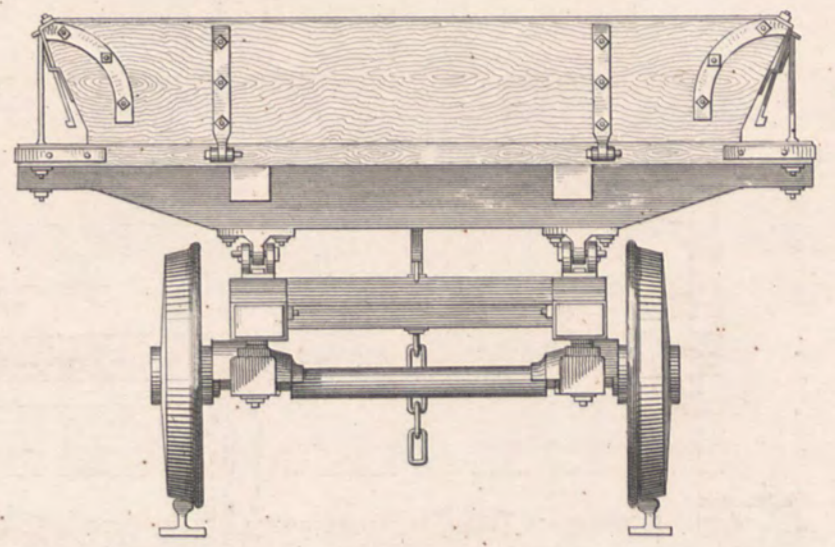


Fig. 85.

Seitenkipper von Dortmund-Soest.

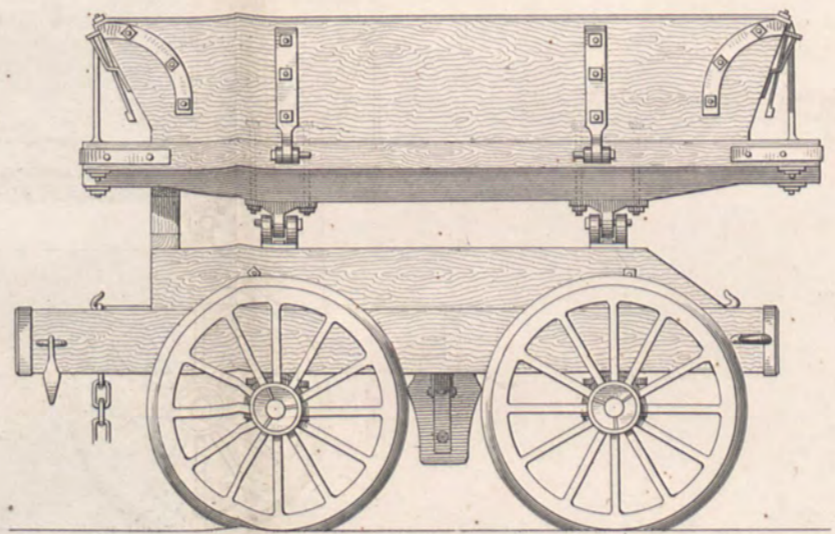
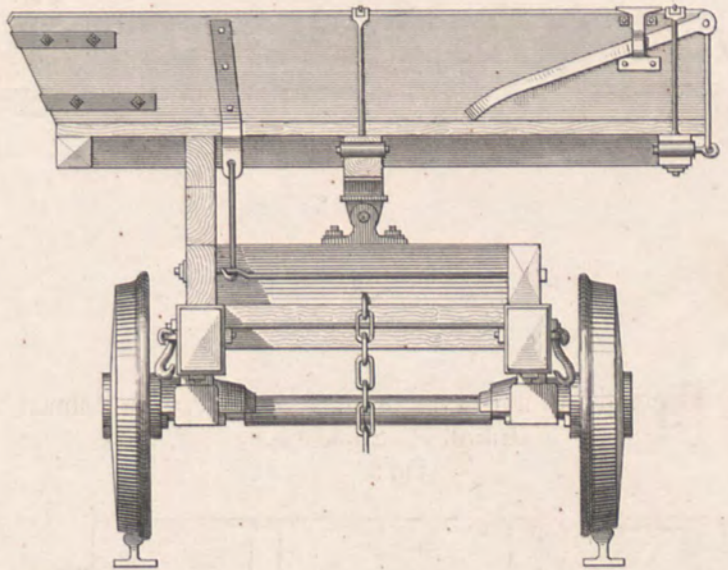
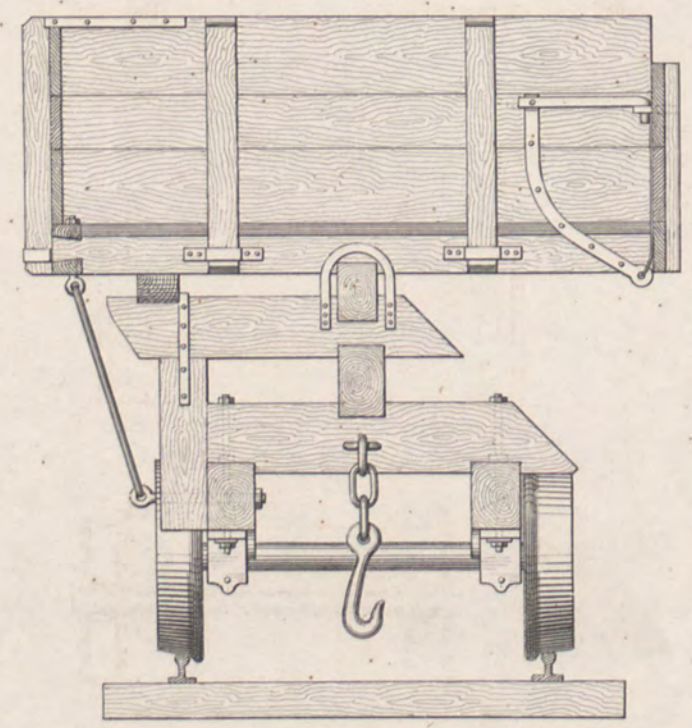


Fig. 86.



Seiten-Kipper des Bau-Unt n Steinfeld (Vorpömersche Bahnen.)  
(Inhalt 2/5 Schacht R.)  
Fig. 82.



Seiten-Kipper des Baumeister Meske (Nordhausen Erfurt)  
(1/3 Schacht R. Inhalt)  
Fig. 88.

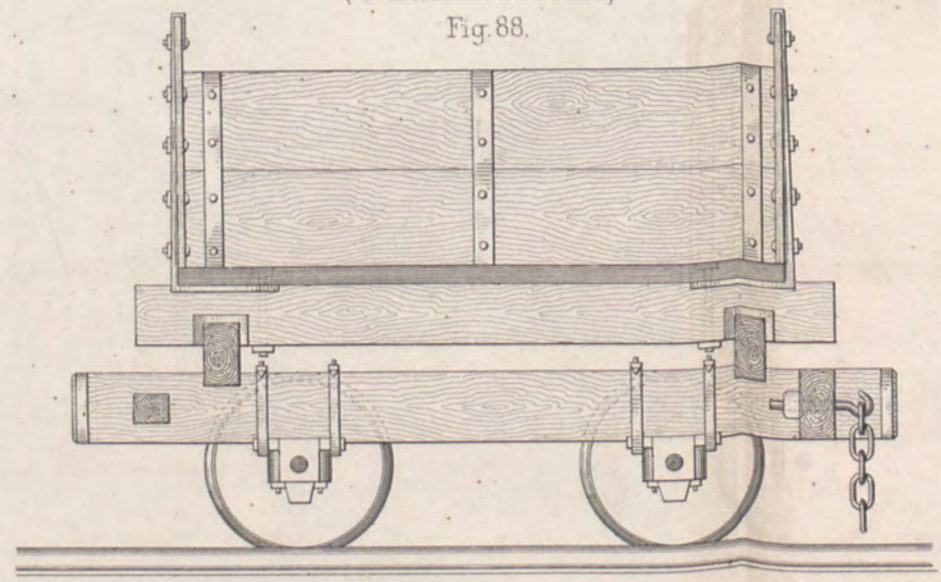
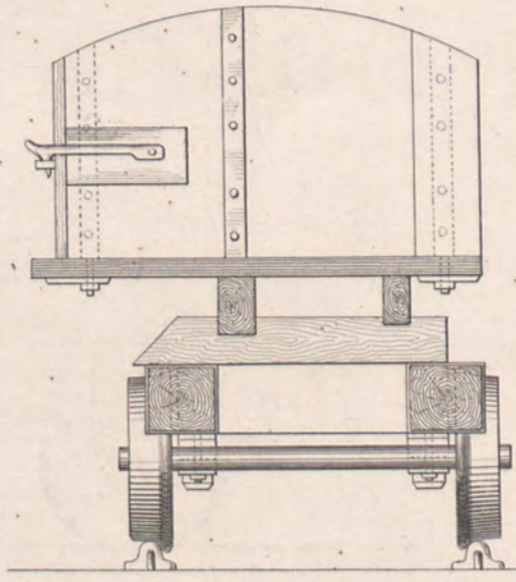
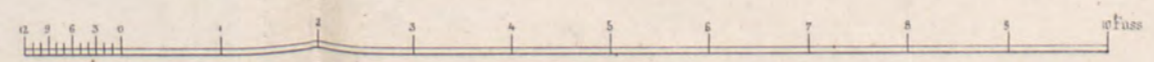
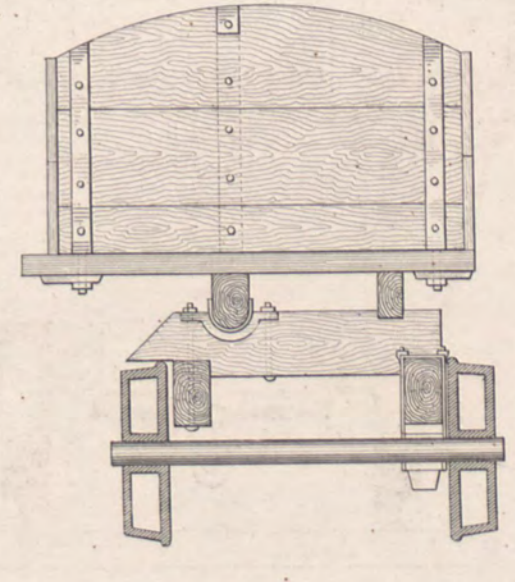


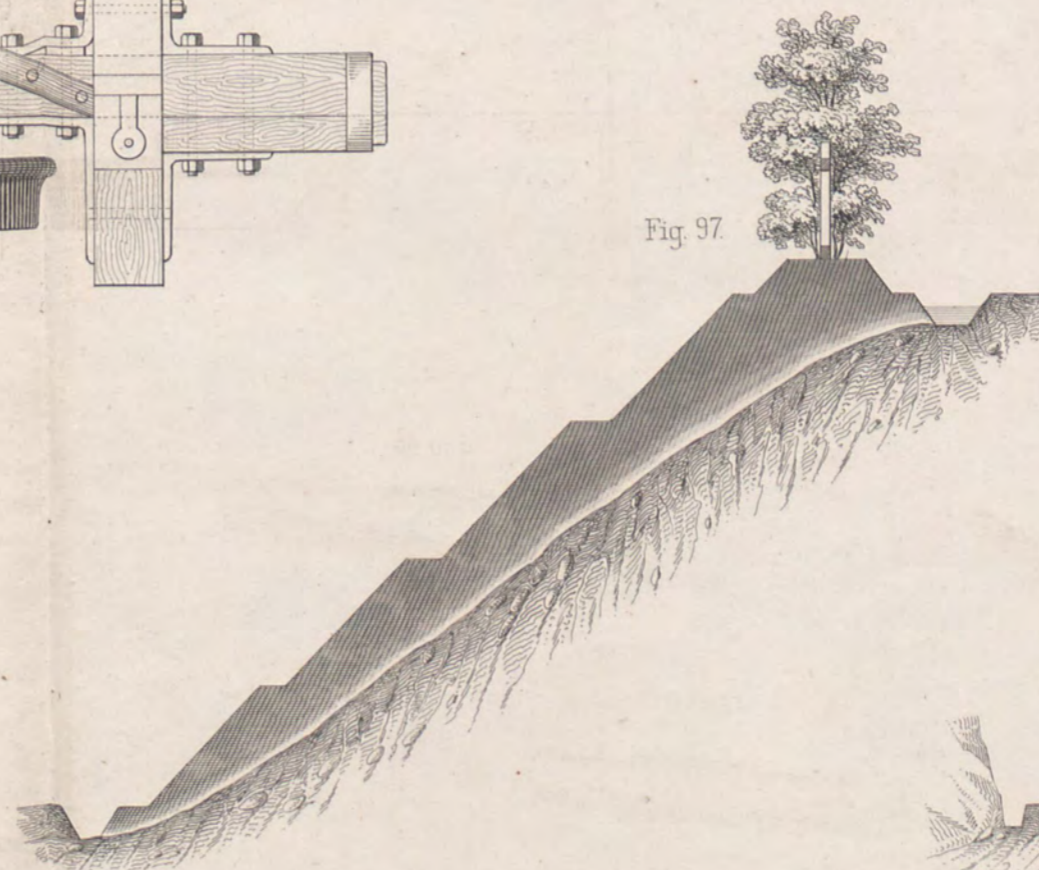
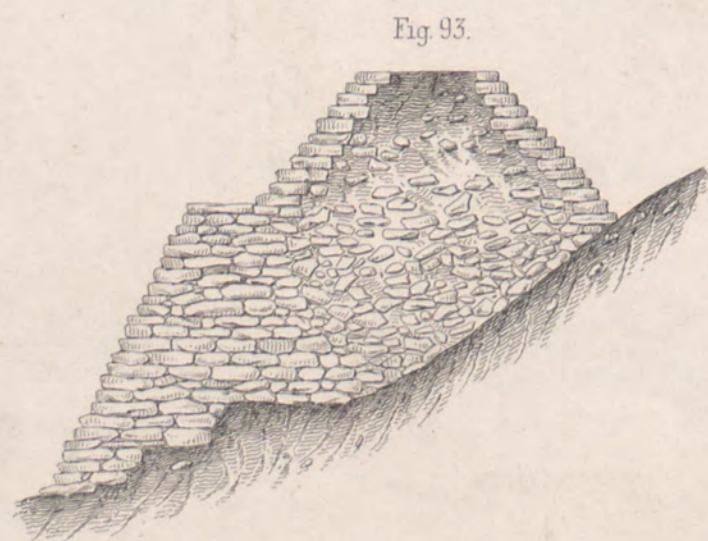
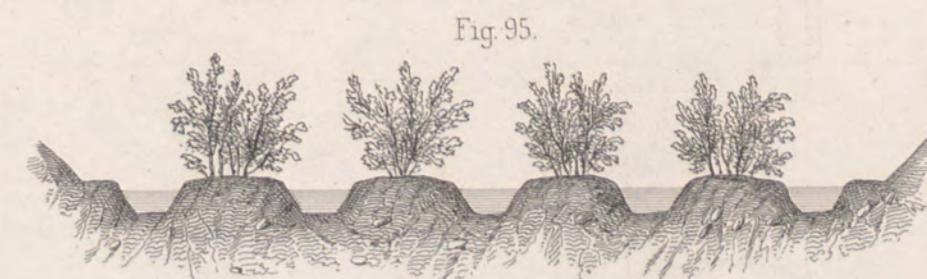
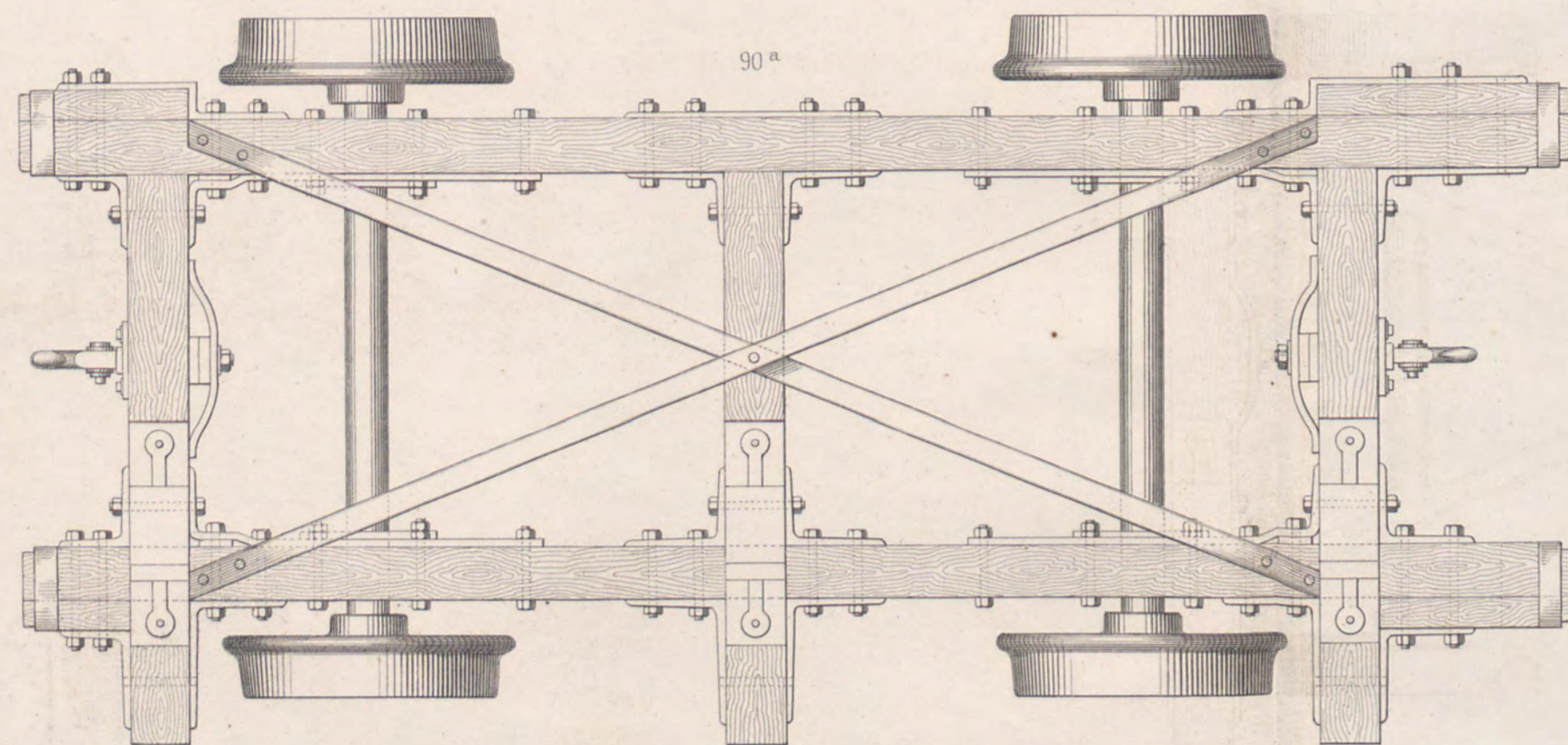
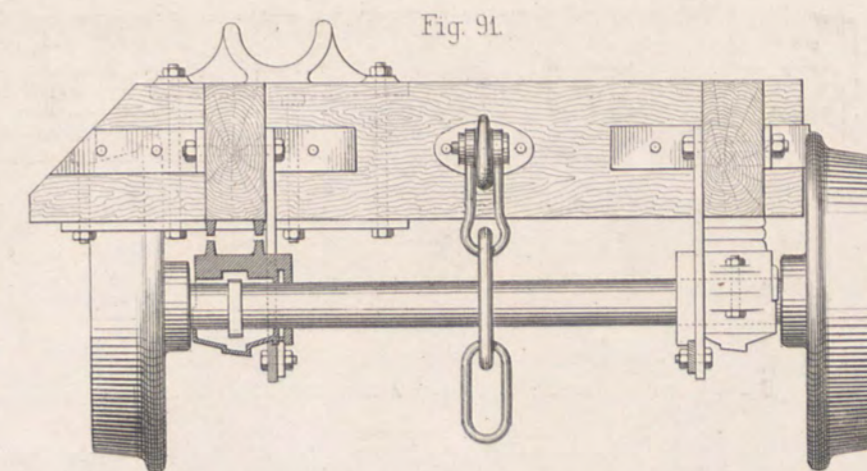
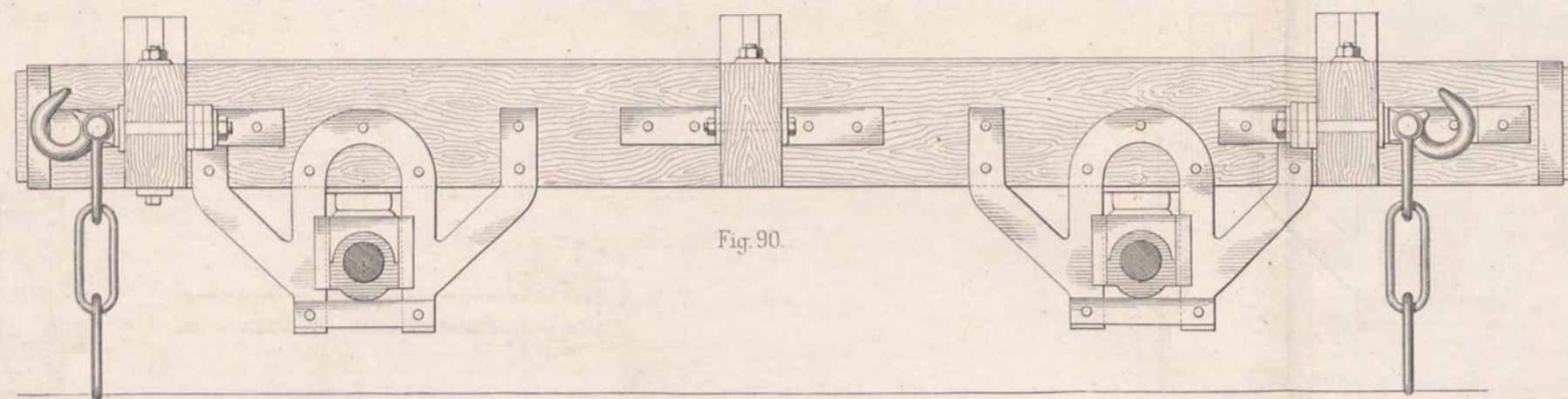
Fig. 89<sup>a</sup>



89<sup>b</sup>



Untergestell eines grossen Seiten Kippers (1 Sch.R. Inhalt), gebaut von Thelen und Wedemeier für Baumeister Meske, (Nordhausen Erfurt).



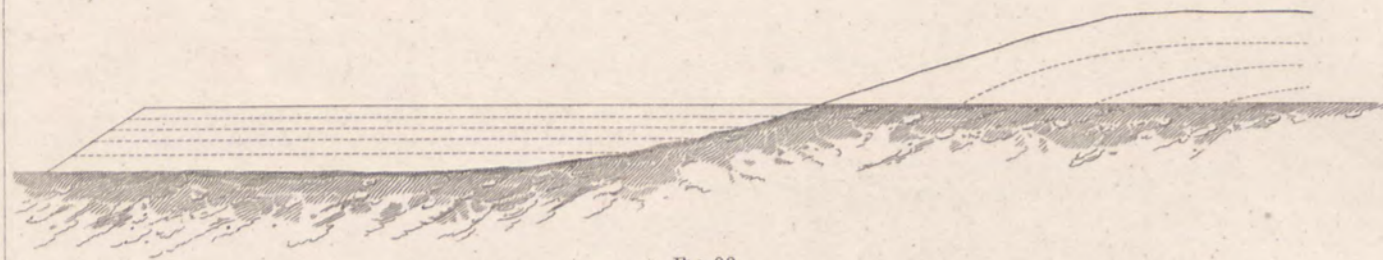


Fig. 99.

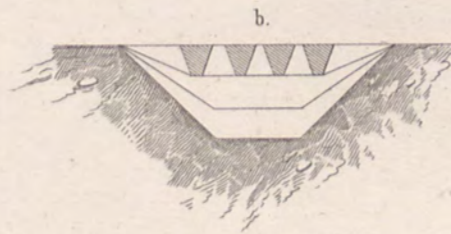
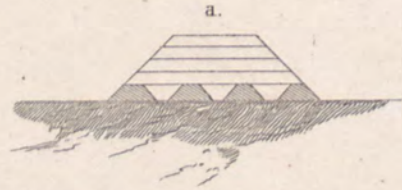
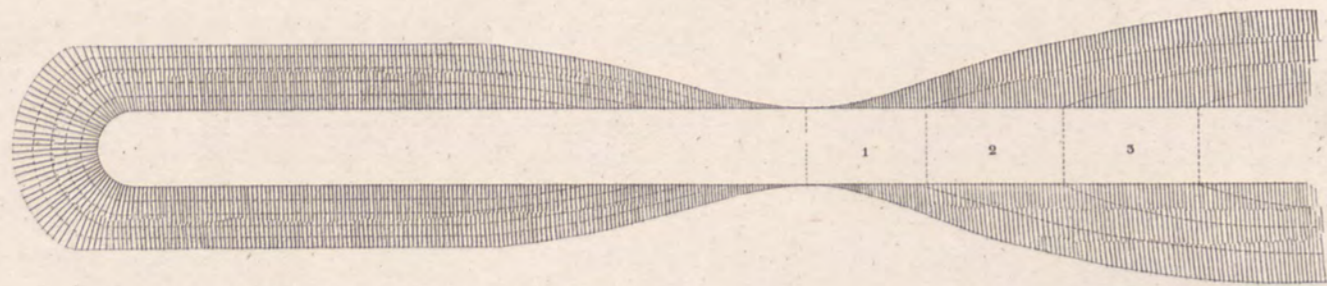


Fig. 100

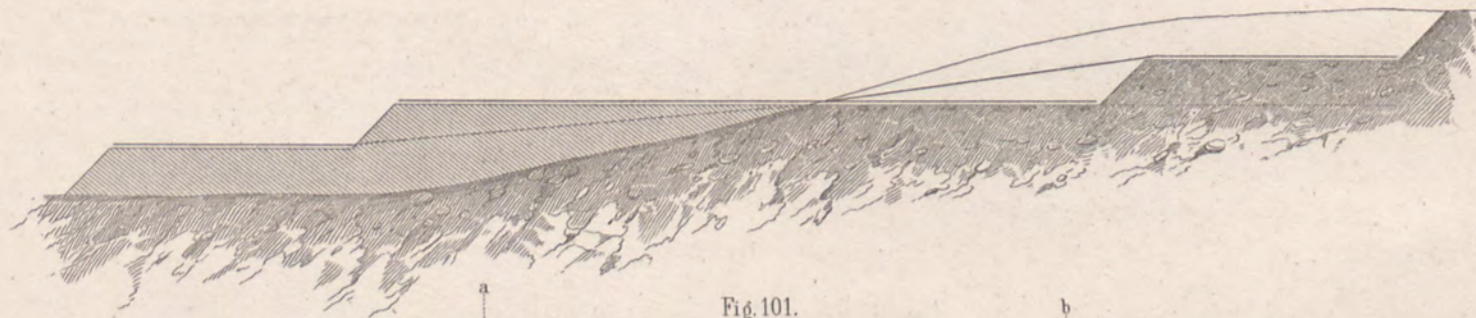
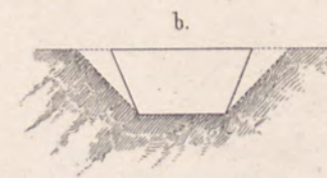
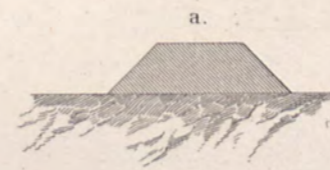
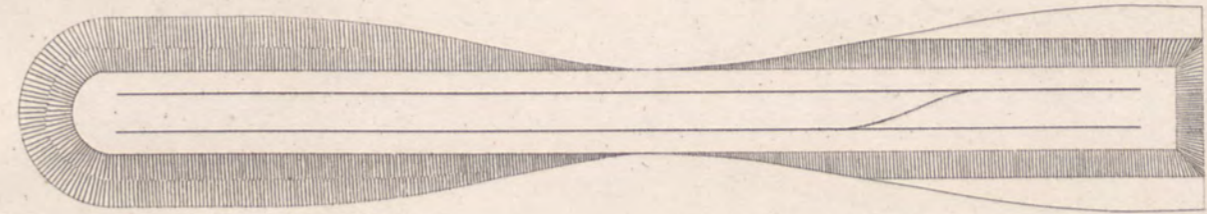


Fig. 101.

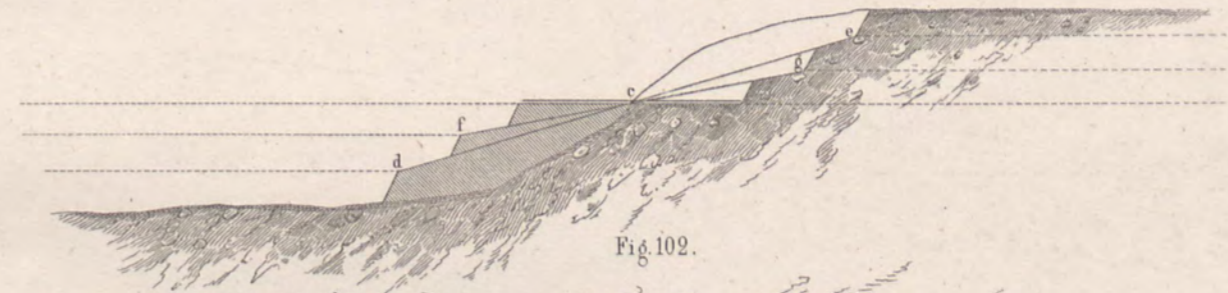
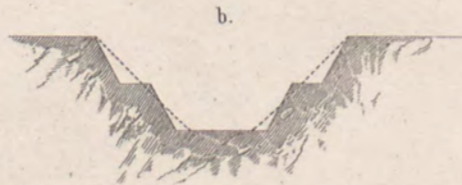
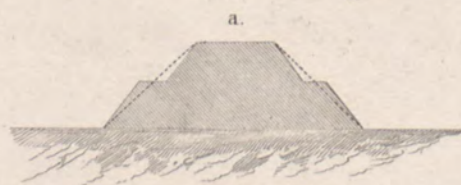
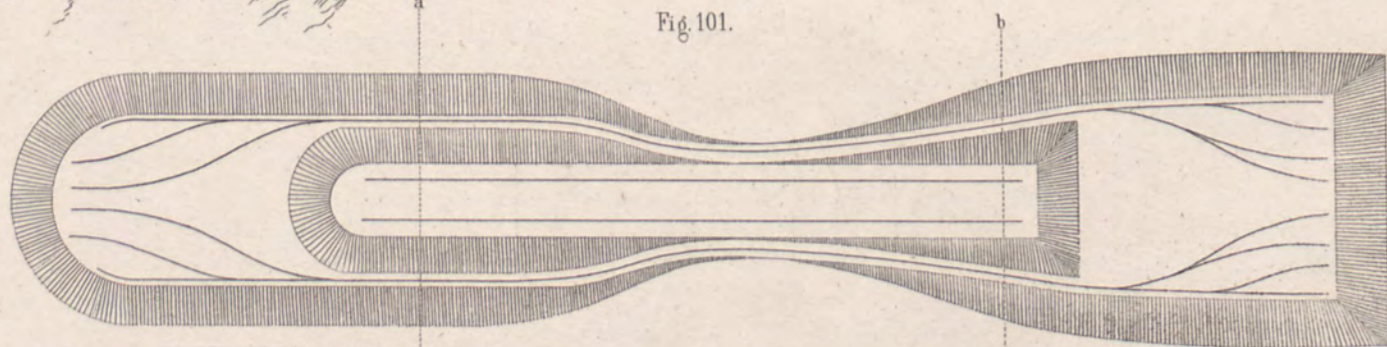


Fig. 102.

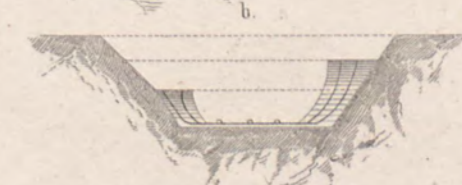
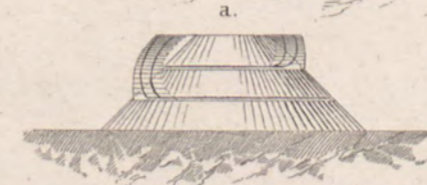
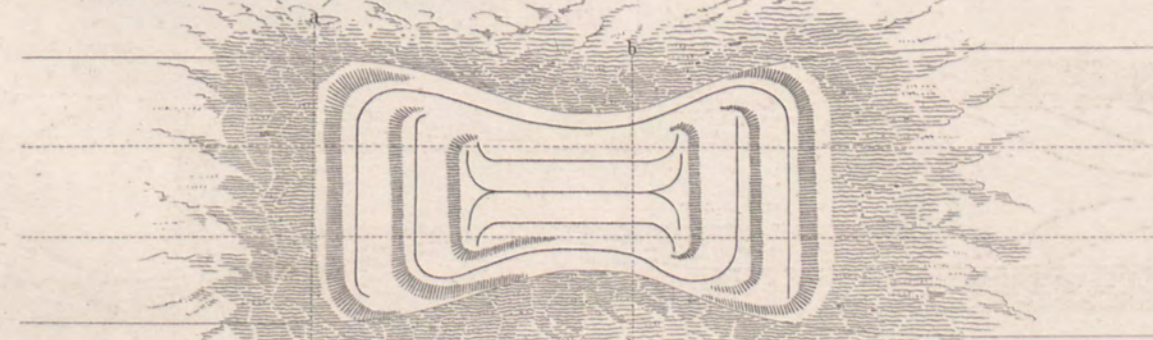


Fig. 105

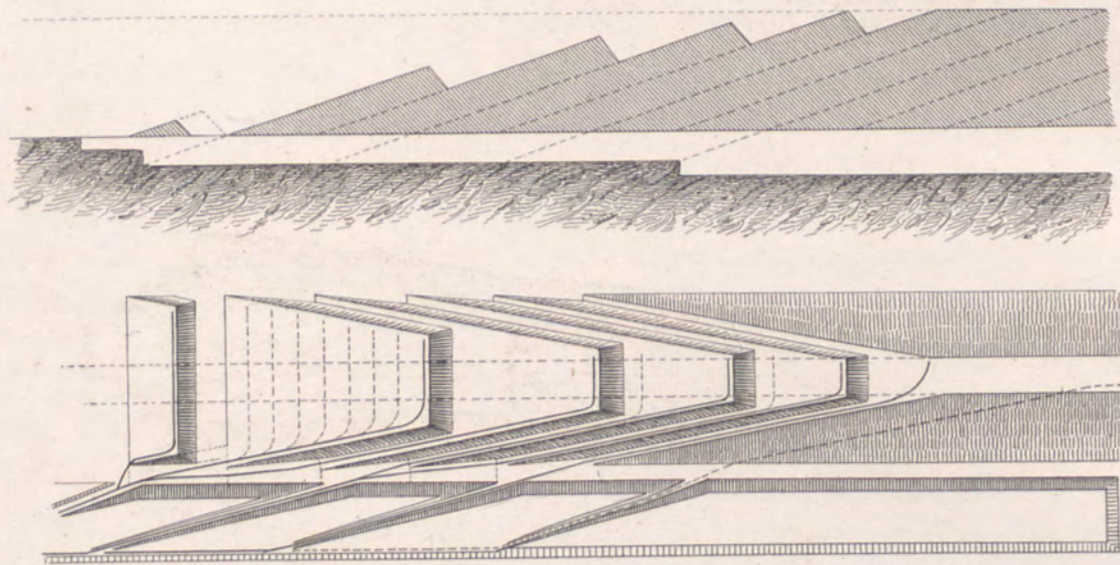


Fig. 106

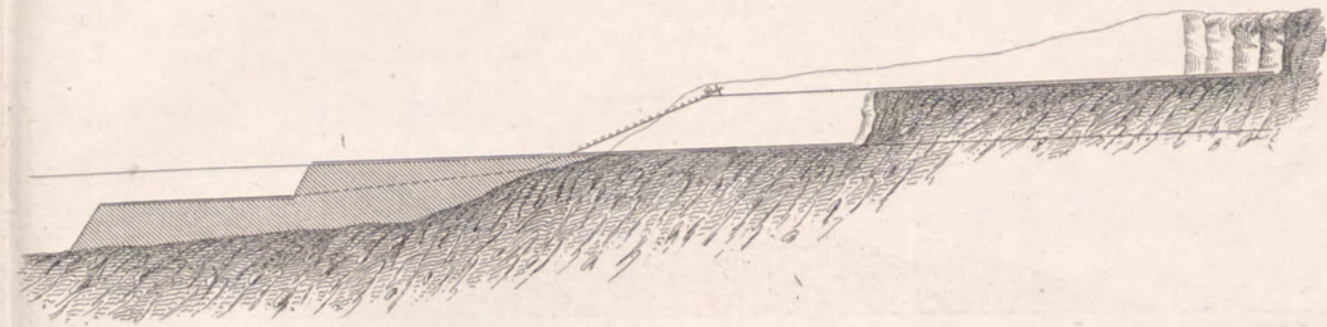
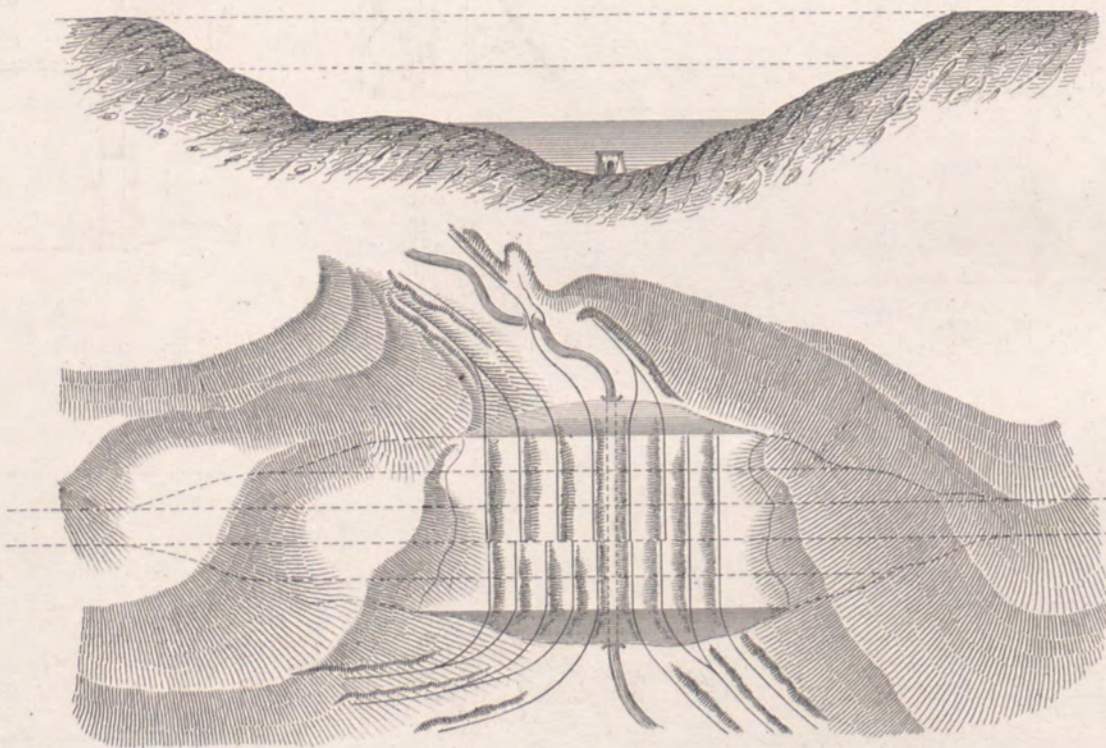
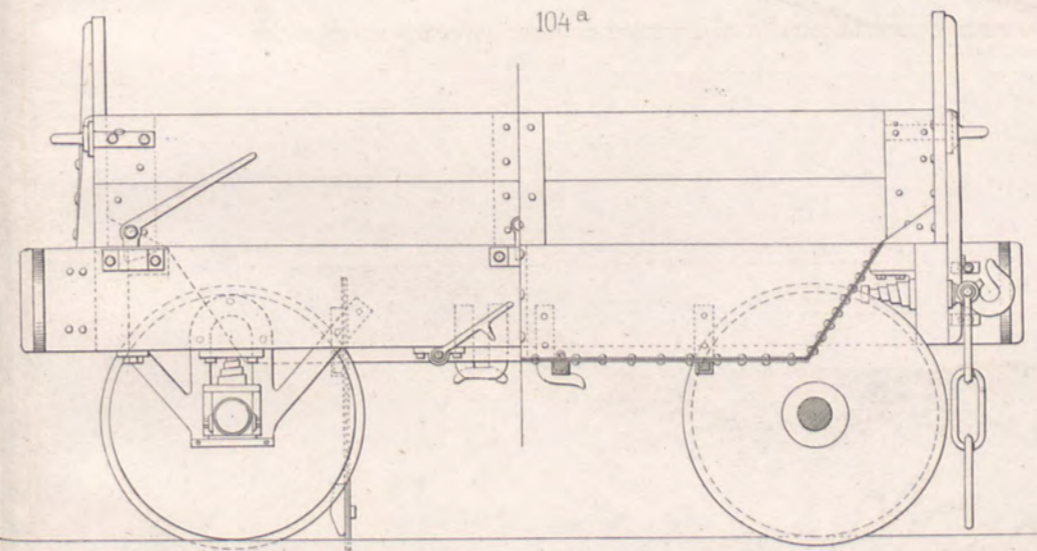
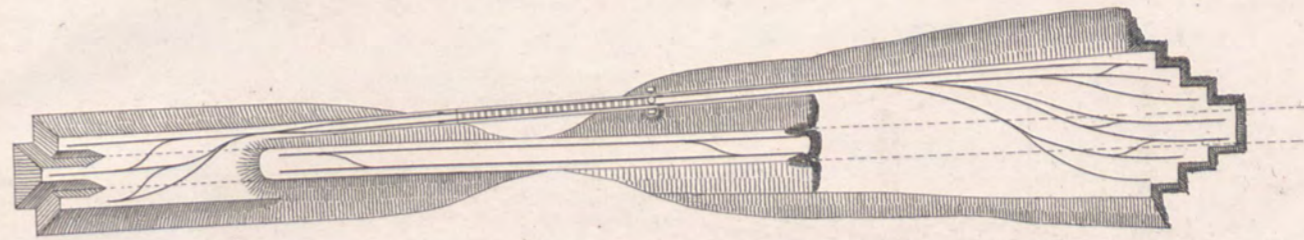
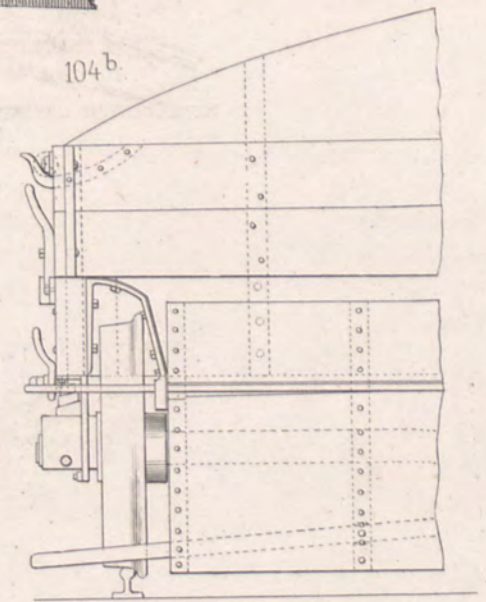


Fig. 103



104 a



104 b

Boden-Kipper von Thomas in Dresden gingen beim Bau d. Nordh. Erf. Bahn hinter d. Lokomotive.  
(Inhalt 100 cubf lose Masse)

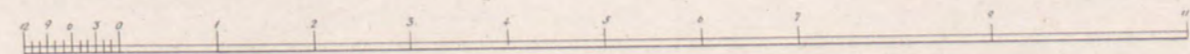
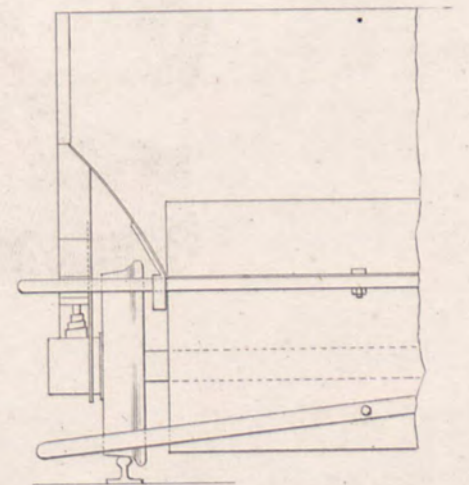
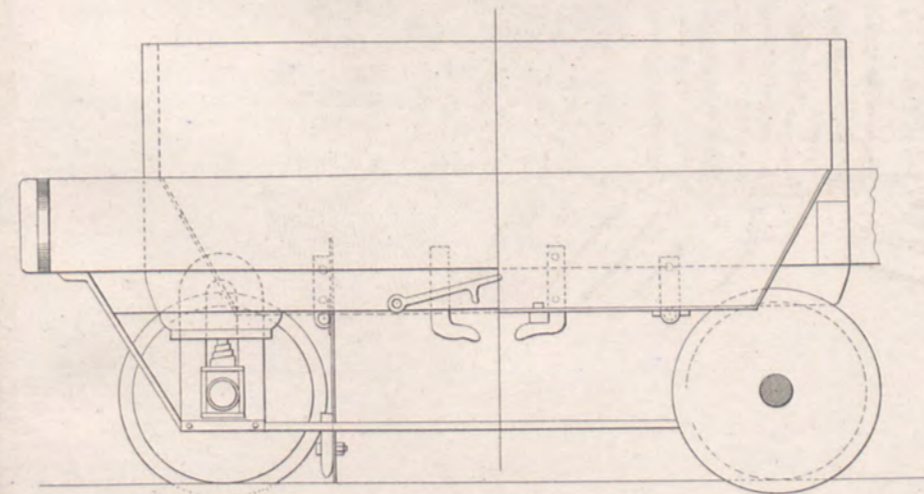
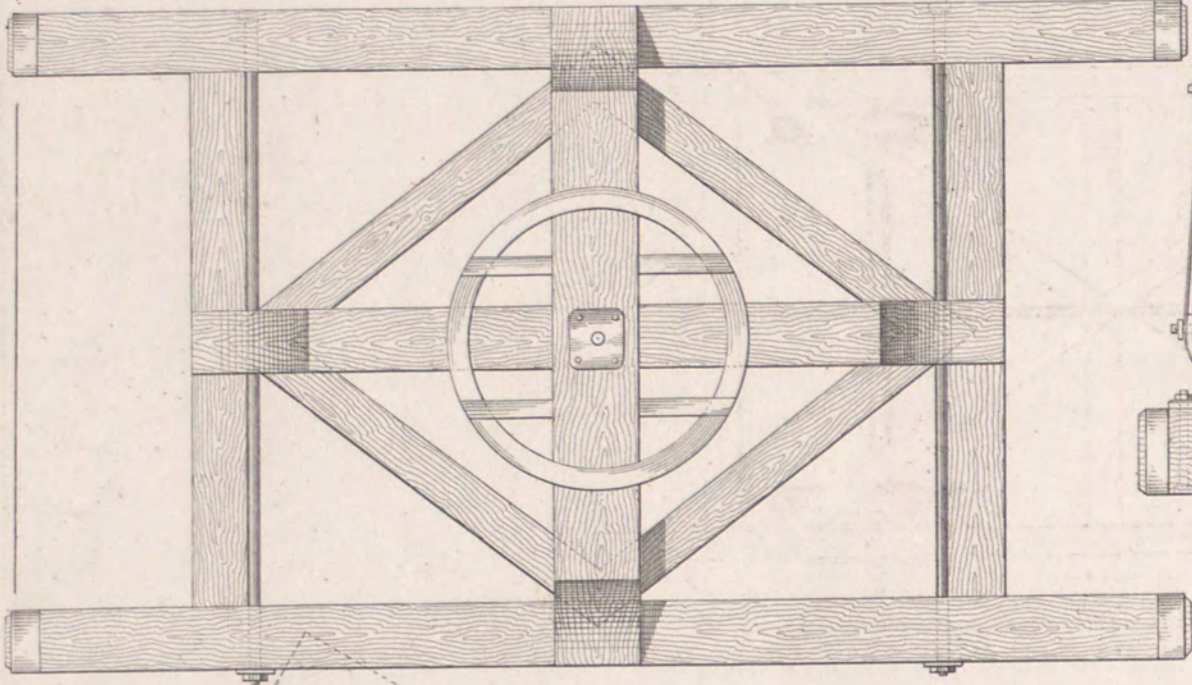
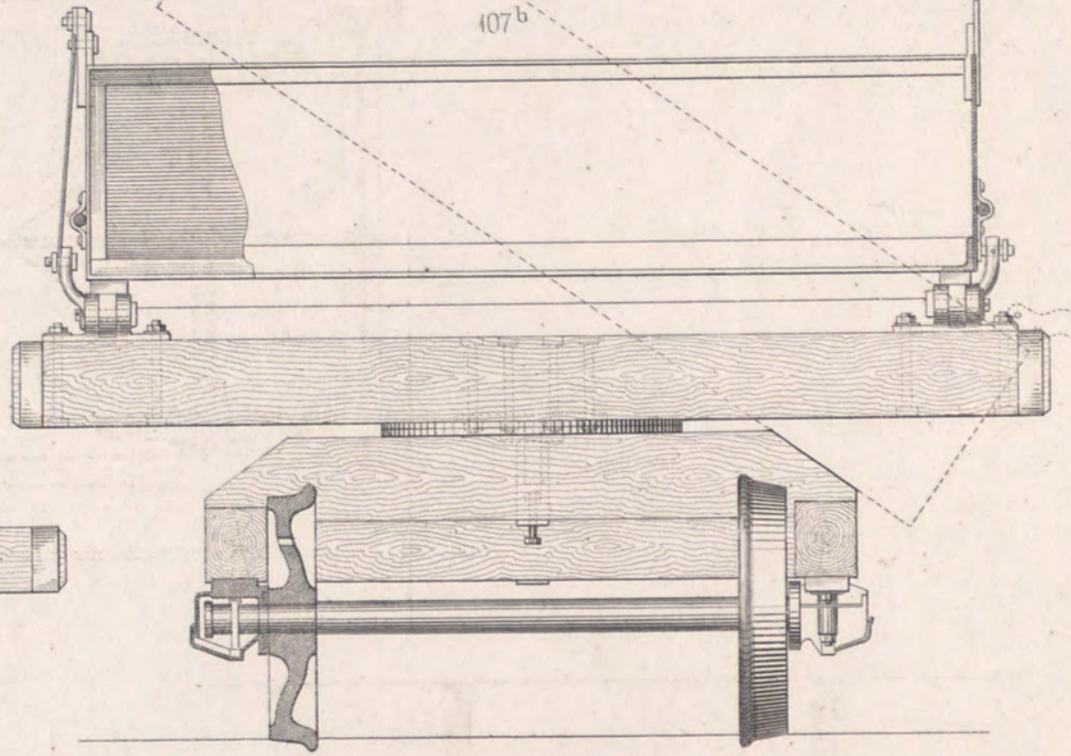


Fig. 107<sup>a</sup>



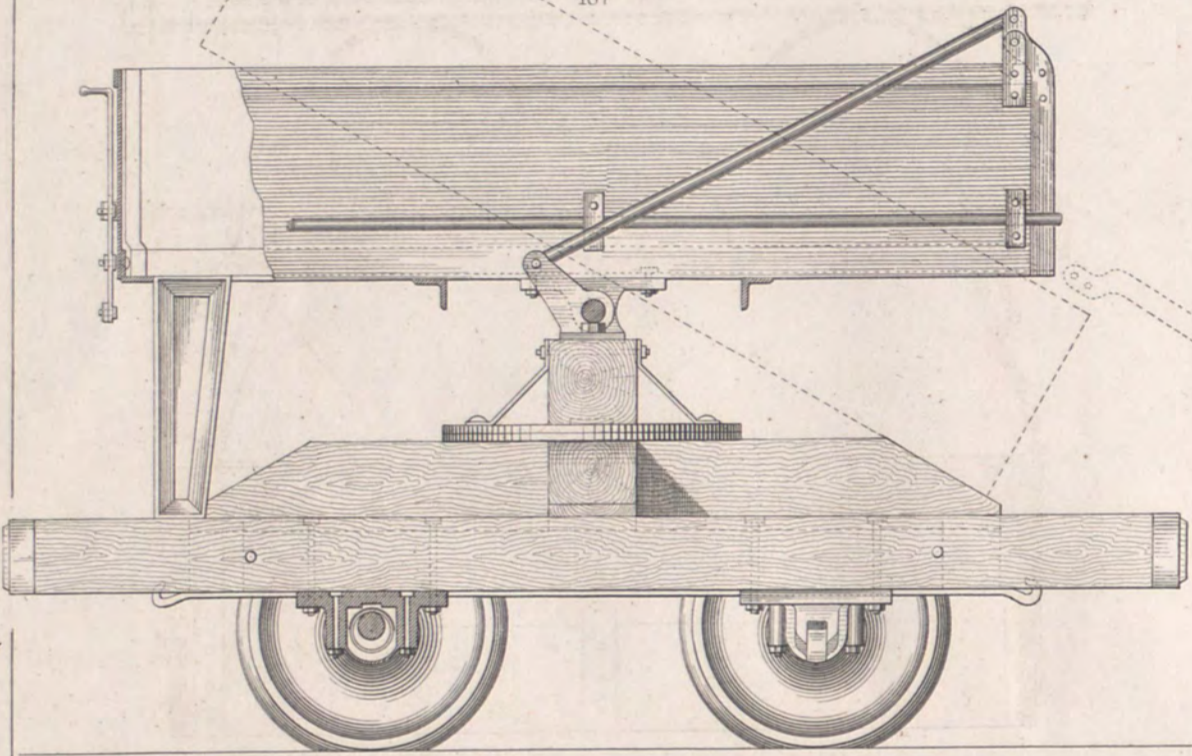
Französischer Universal-Kippwagen auf Drehschemel mit eisernem Kasten  
(Inhalt 1 1/10 cub. métre oder 1/3 Sch. R.)

107<sup>b</sup>

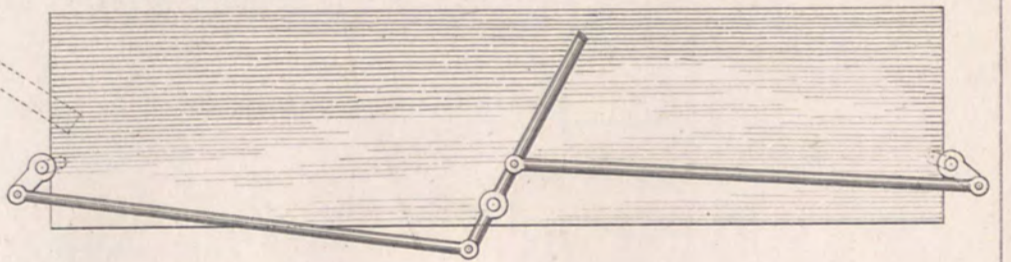


Maassstab 1/16 natürl. Grösse.

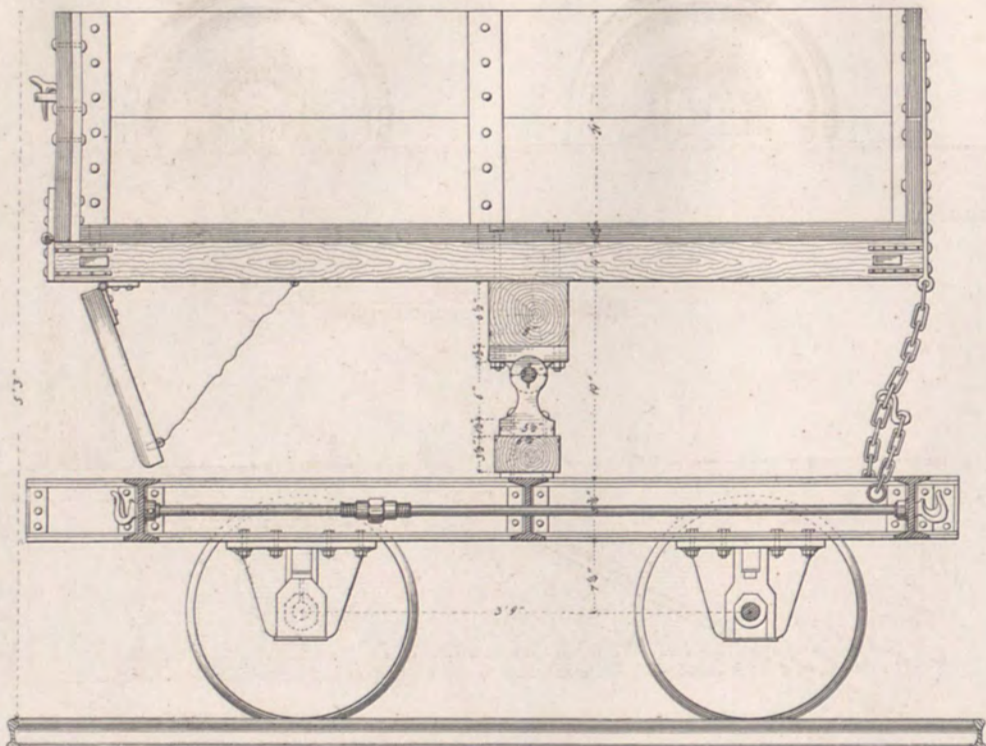
107<sup>c</sup>



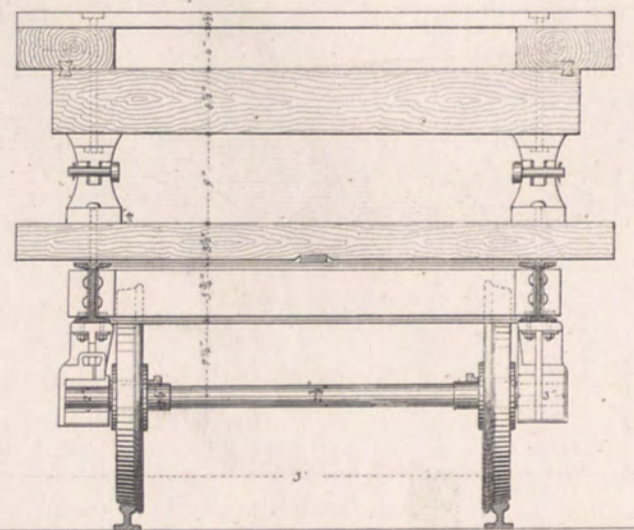
107<sup>d</sup>



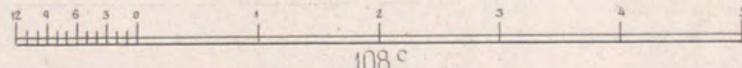
Inhalt des Kastens, massig gehäuft 60 cubf oder 1/3 Sch. R. feste Abtragsmasse.  
Fig. 108<sup>a</sup>



108<sup>b</sup>



Kippwagen mit eisernem Untergestell von Plessner (Schlesische Gebirgsbahn.)



108<sup>c</sup>

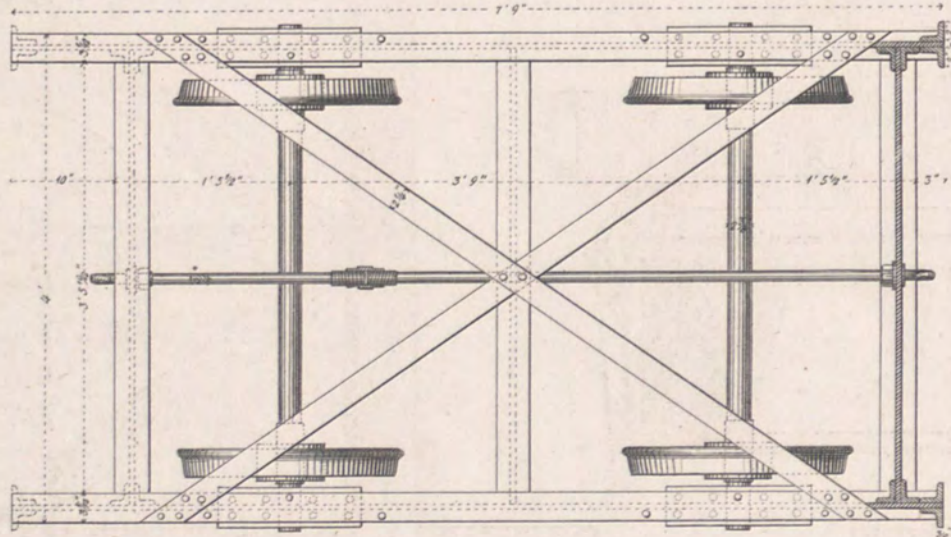


Fig. 109.

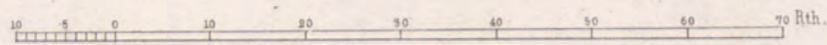


Fig. 110.

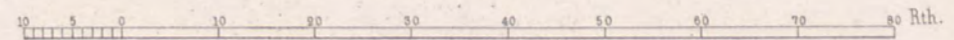
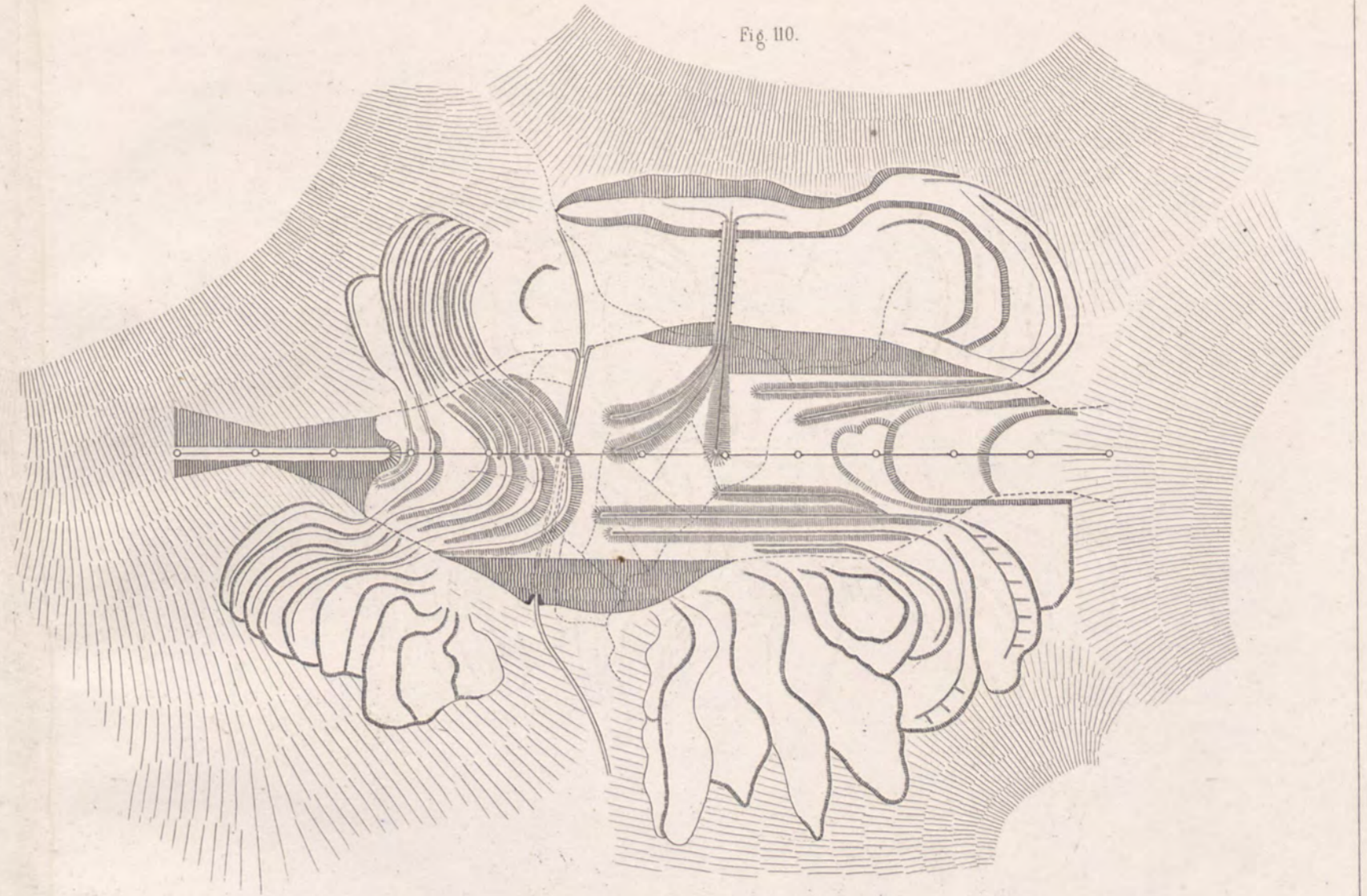


Fig. 111.

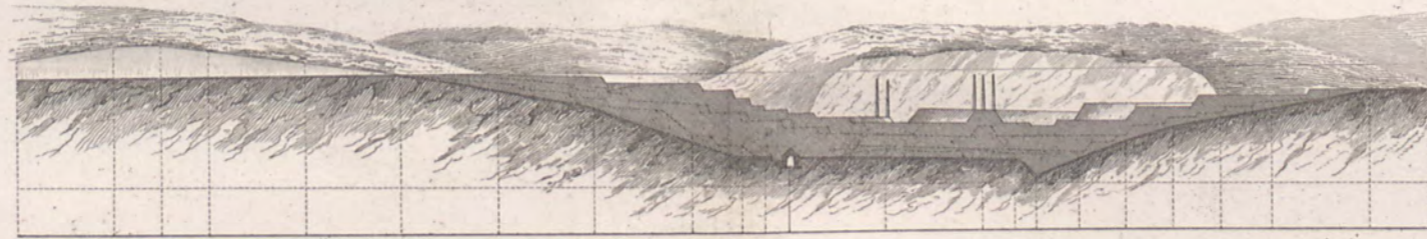


Fig. 112.

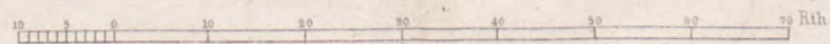
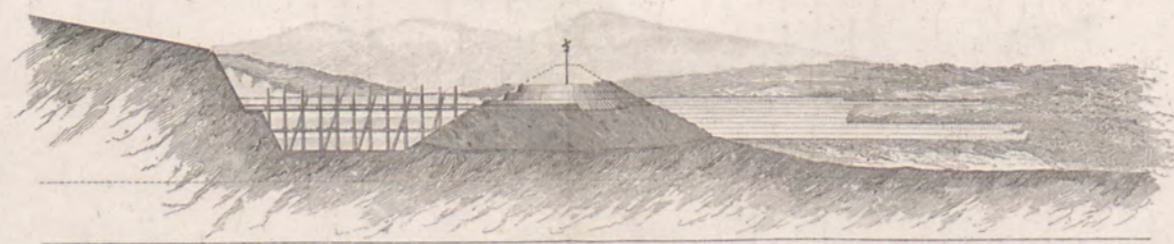


Fig. 113.

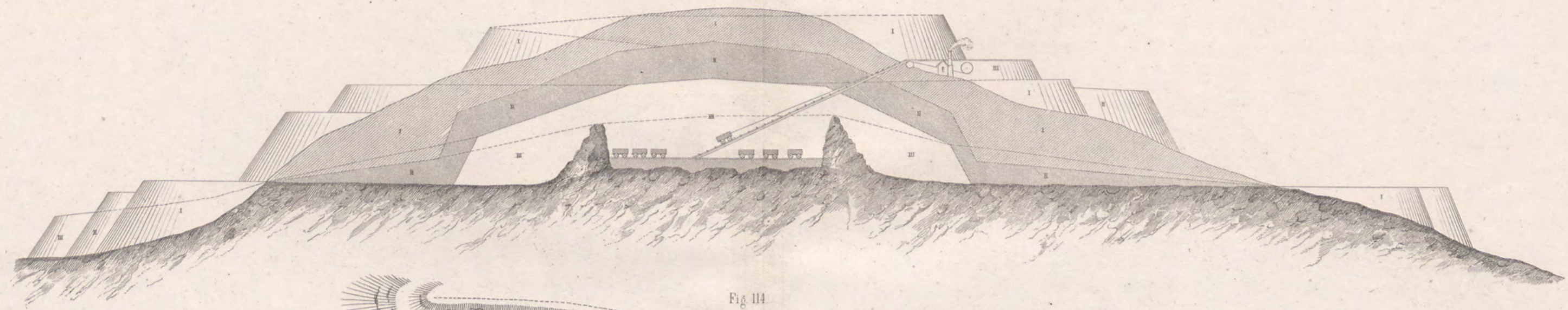


Fig. 114.

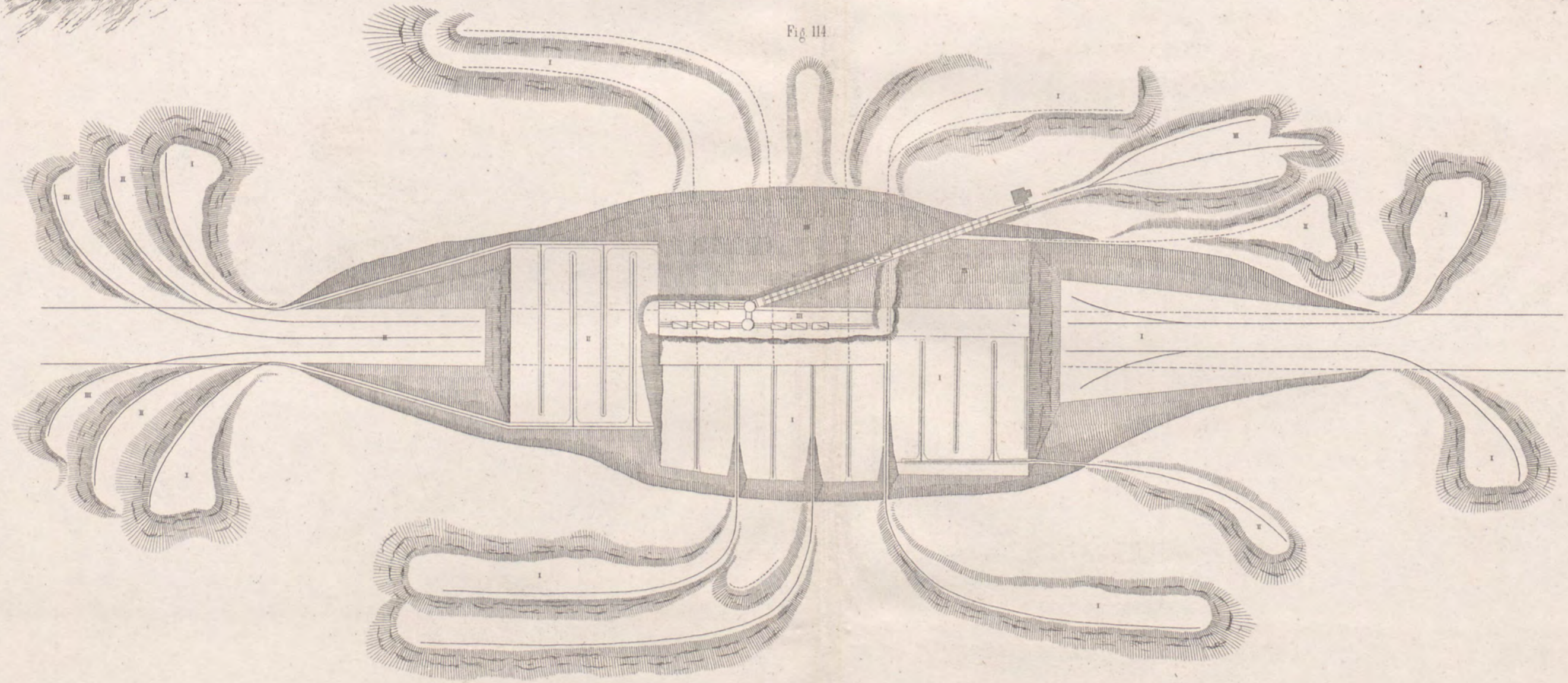


Fig. 115.

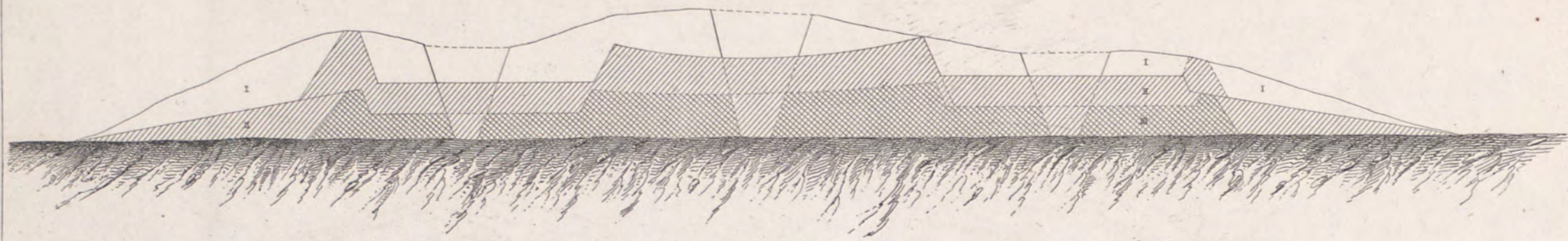


Fig. 116.

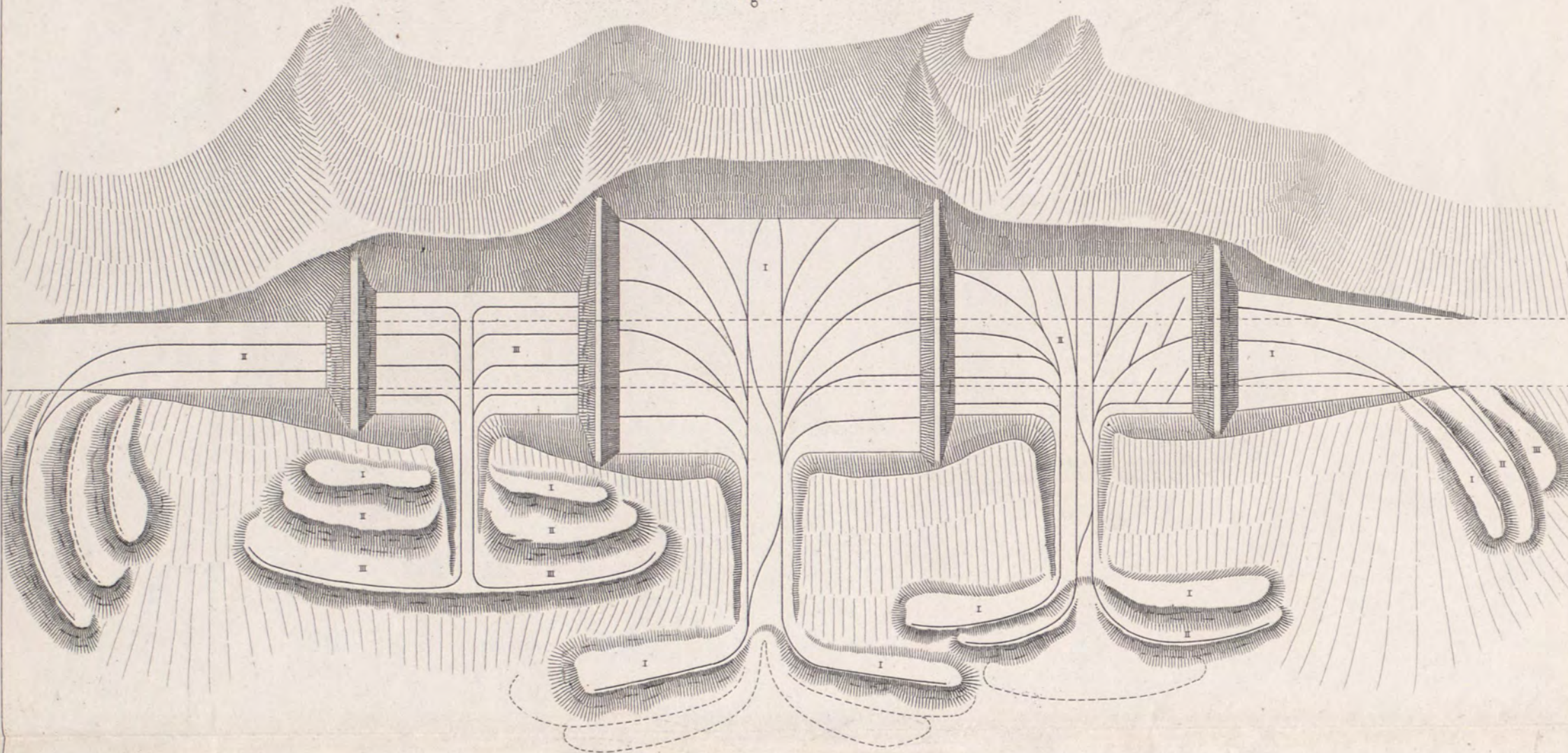


Fig. 117.

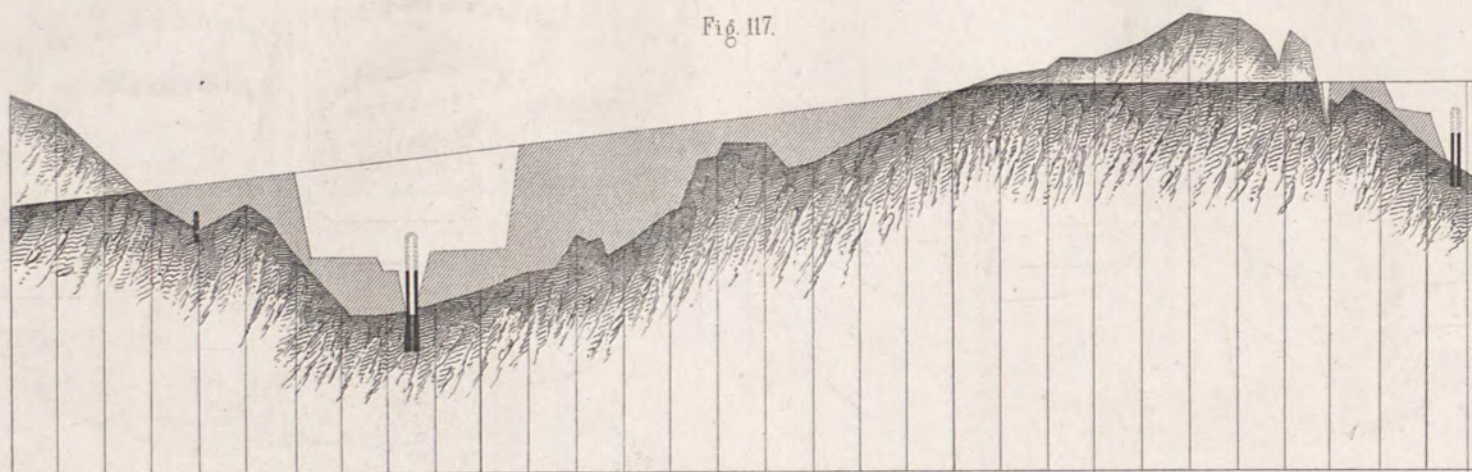


Fig. 118.

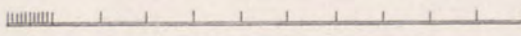
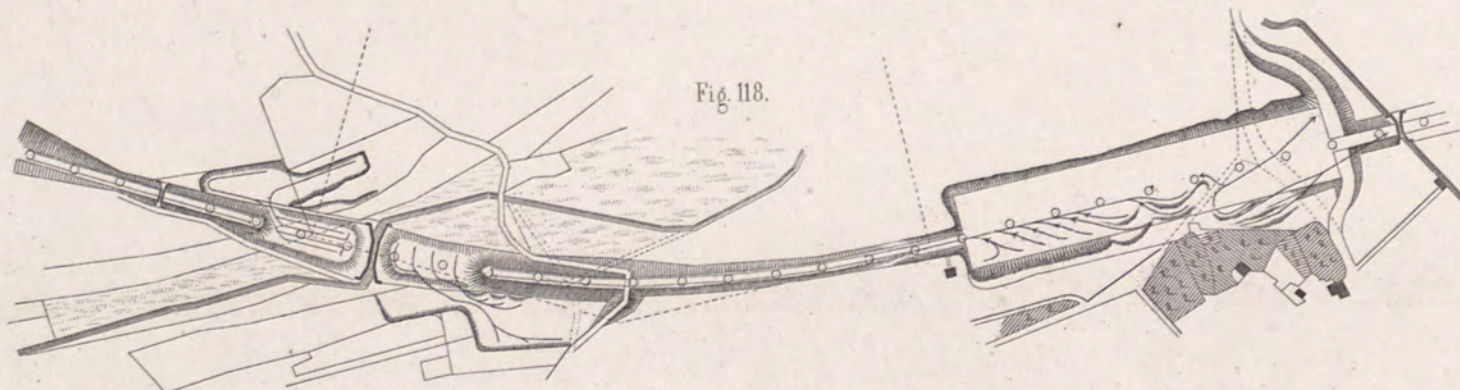




Fig. 119.

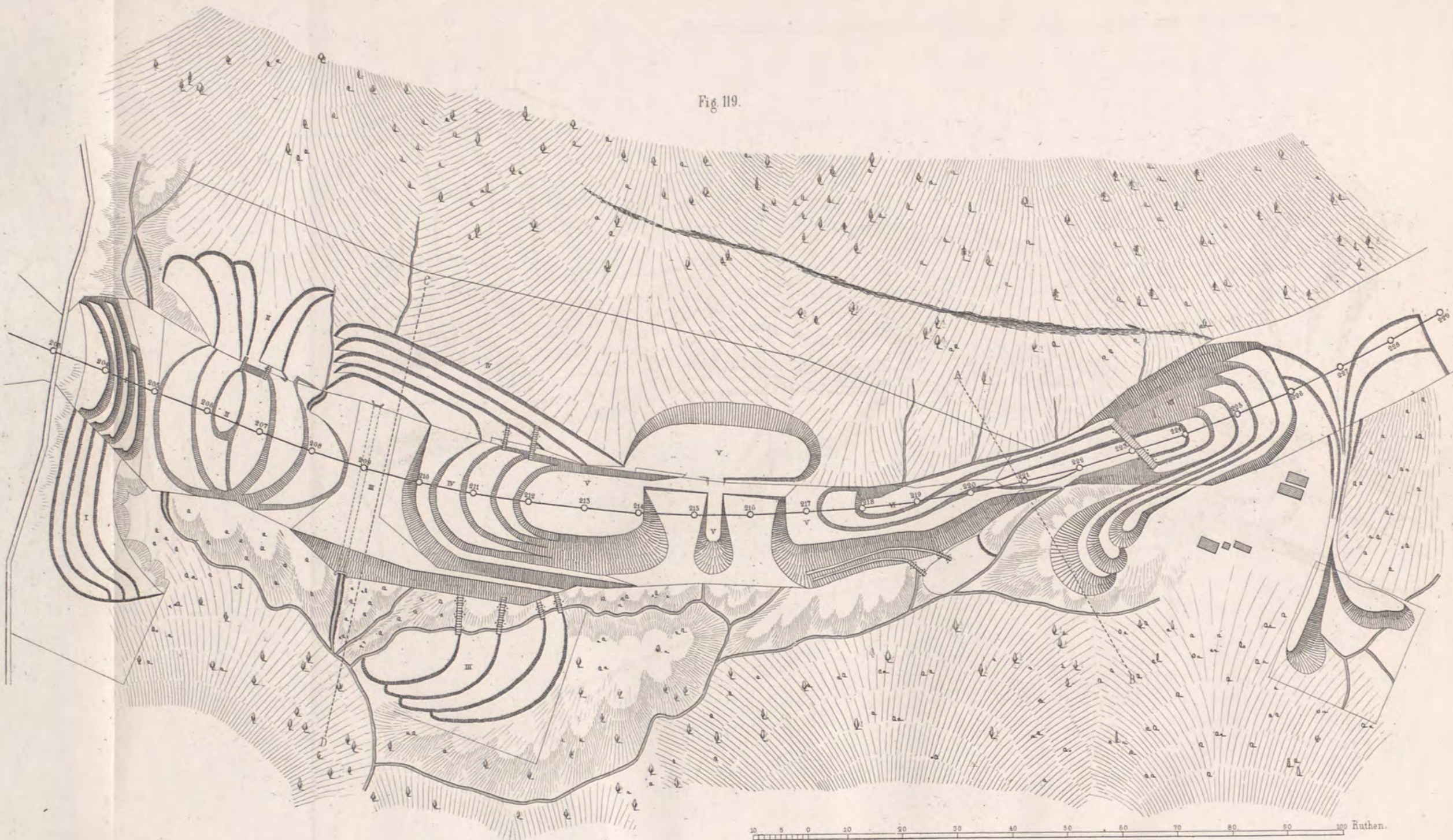


Fig. 120.

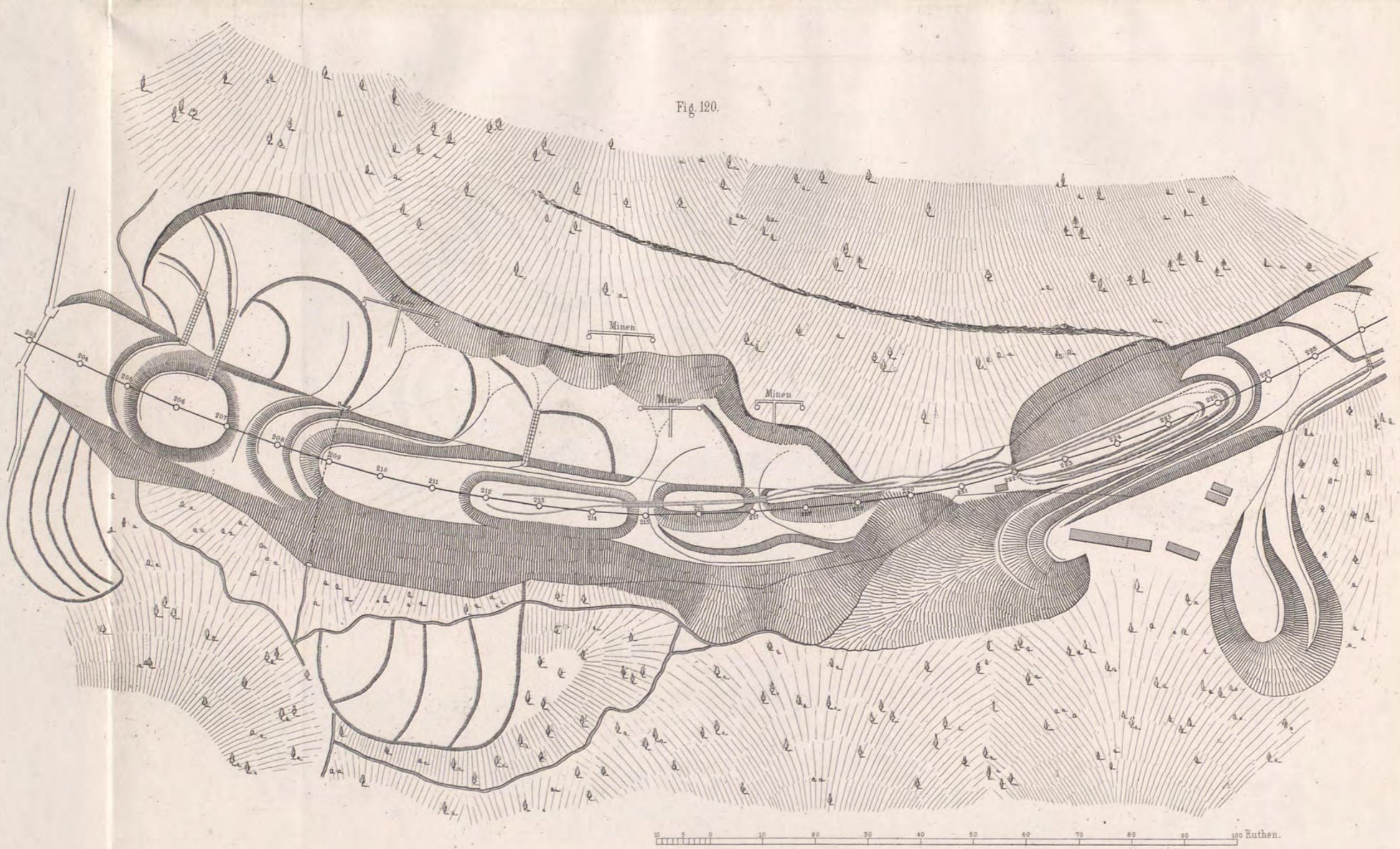


Fig. 121. Längen-Profil.

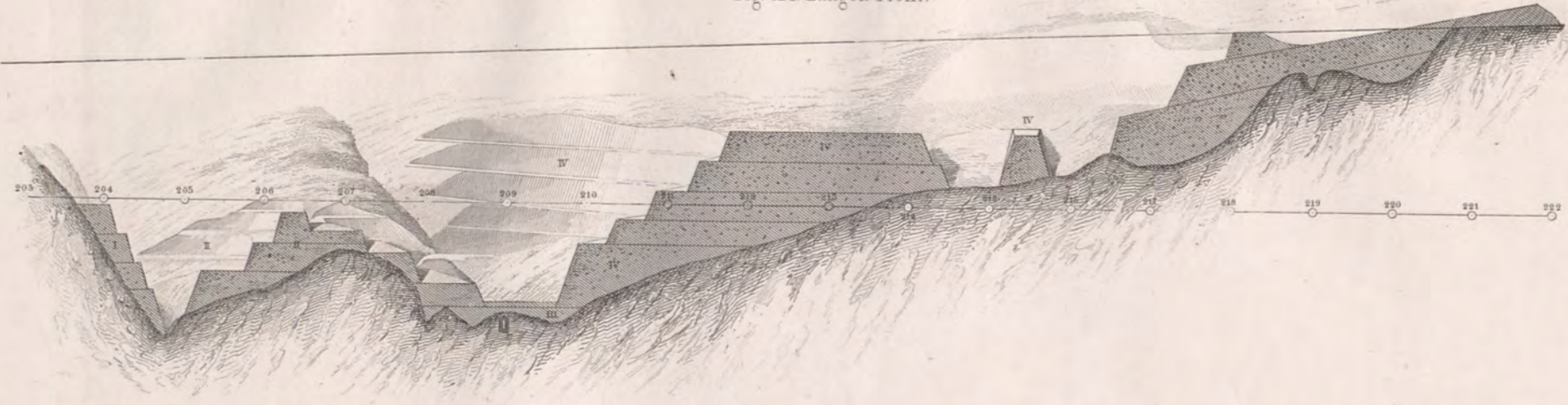


Fig. 122. Quer-Profil AB.

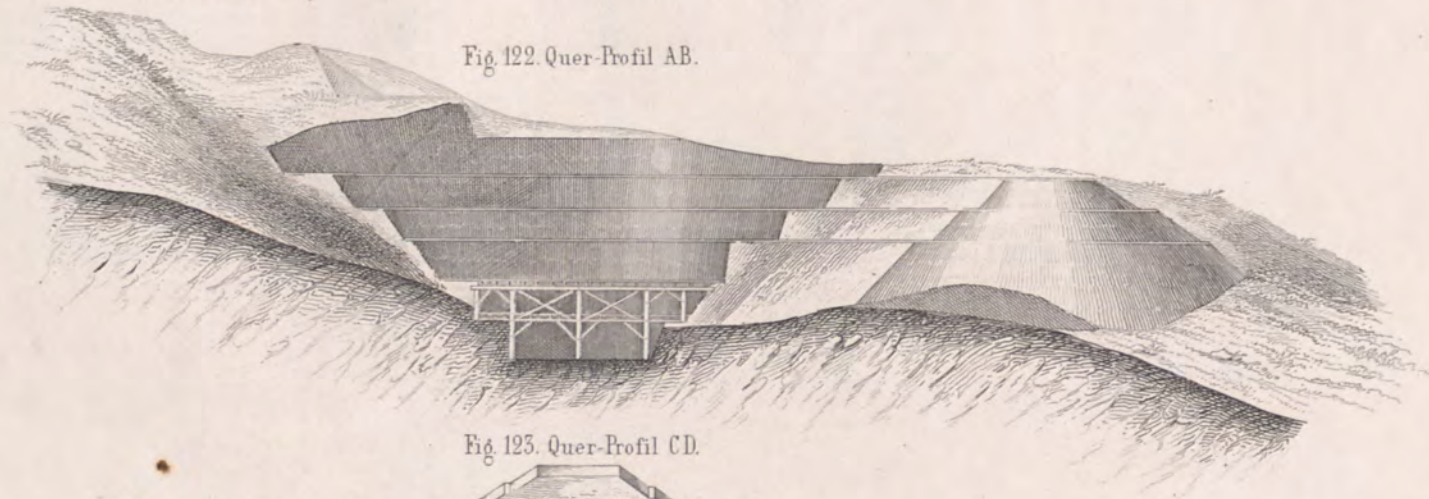


Fig. 123. Quer-Profil CD.

