

Joh. Heymann 

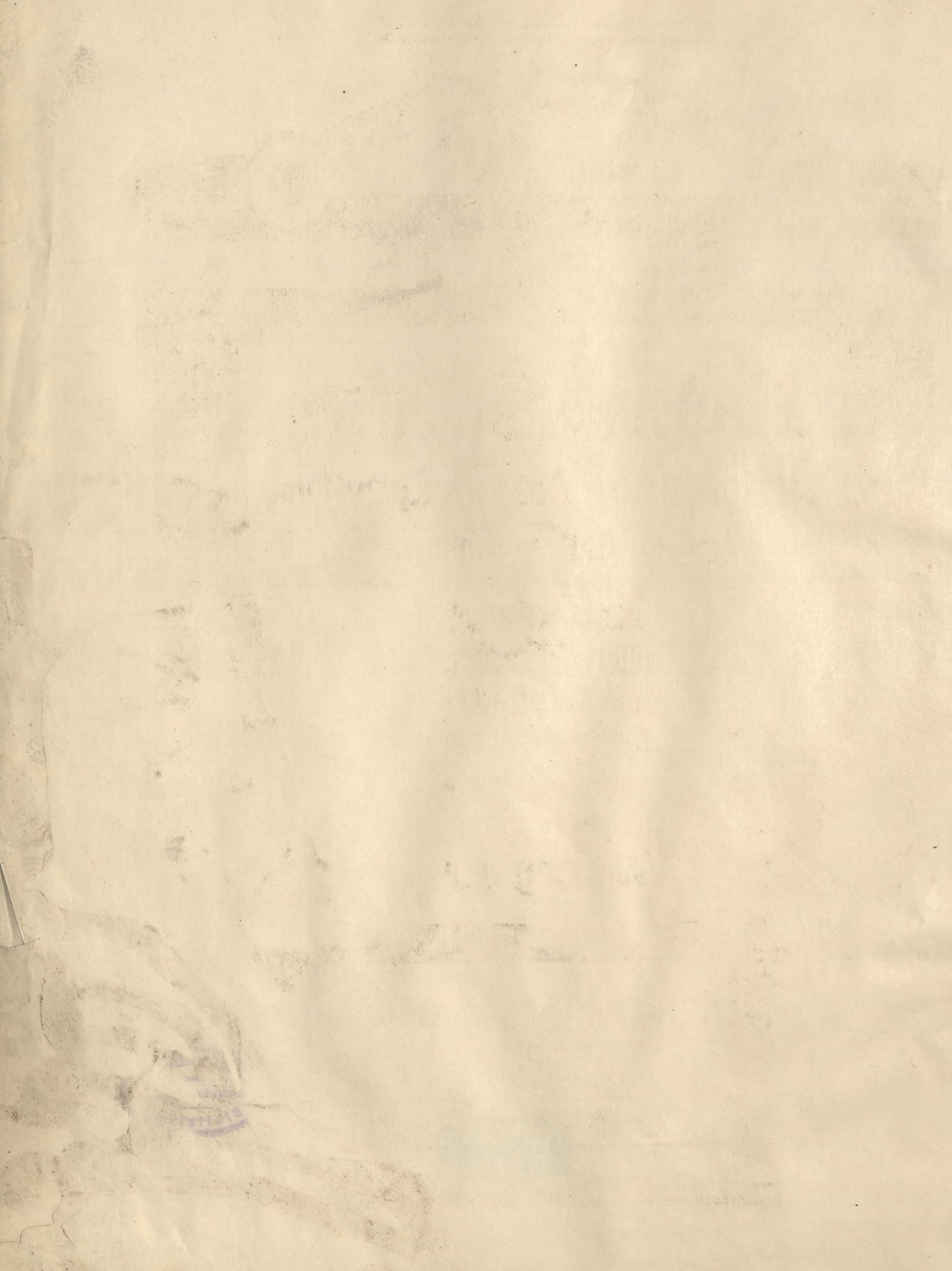
MODERNE
SCHRIFTEN


LEIPZIG, SEEMANN & Co

Biblioteka Politechniki Krakowskiej



10000302892





Moderne Schriften

Vorlagen für die Beschreibung
technischer Zeichnungen

Für Techniker
aller Fächer,
insonderheit
für Architekten
und Bauhand-
werker entw. von
Joh. Heymann

Verlag von Seemann & Co
Leipzig 1903.

Nr. 26308





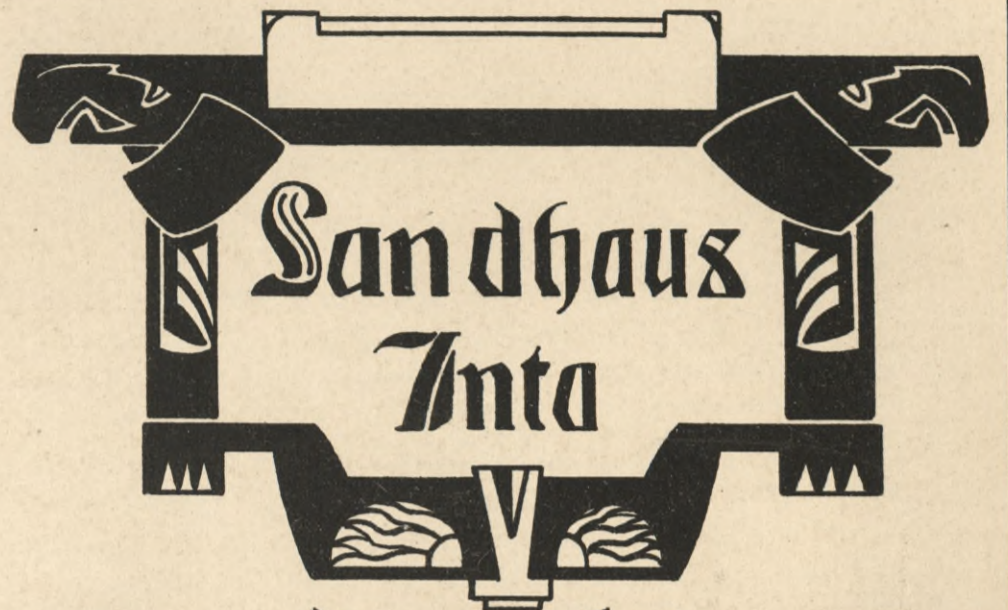
IV 35120

A	B	C	D	E	F
G	H	I	J	K	L
M	N	O	P	Q	R
S	T	U	V	W	X
Y	Z				

M W

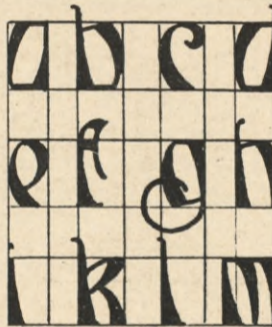
a	b	c	d	e	f	g	h	i
k	l	m	n	o	p	q	r	s
t	u	v	x	y	z			

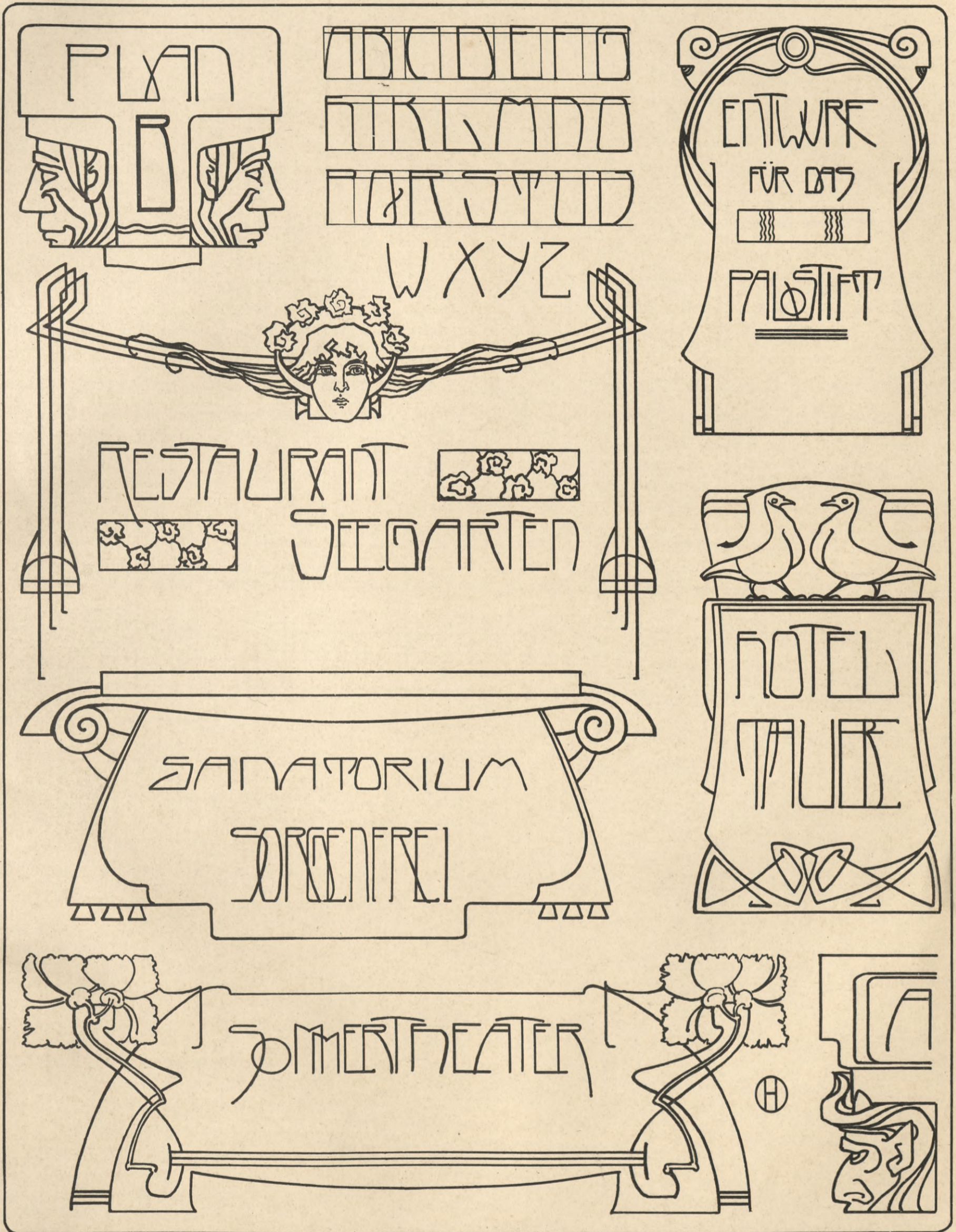
⊕



1	2	3
4	5	6
7	8	9







A B C D E F G H I J
 K L M N O P Q R S T U
 V W X Y Z

Flussregulierung

Kircher-
Portal
2

Harschhaus
in
Lübeck



Trinkhalle
Stb

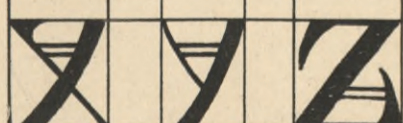
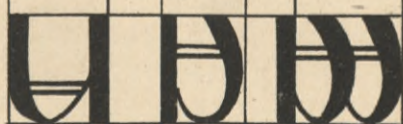
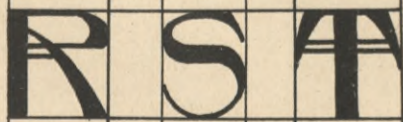
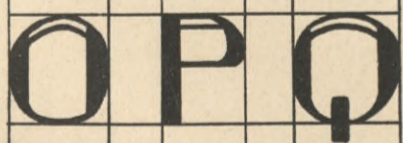
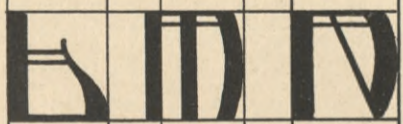
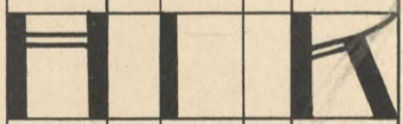
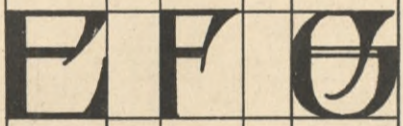
1 2 3 4 5 6 7 8 9 0

Entwurf für die Neugestaltung des
 Honorar-Stiftes in Hernkassel a. 1898

P
 Y
 Z

DLRA

abcdeik l m n o p s t u v w



A B
 C D
 E F
 G H
 I J
 K L
 M N
 O P
 Q R
 S T
 U V
 X Y
 Z

Neubau Elmool

Wohnhaus
 ANN

VILLA
 DE

1 2 3 4 5 6 7 8 9 10 11 12 13 14 15 16 17 18 19 20 21 22 23 24 25 26 27 28 29 30 31 32 33 34 35 36 37 38 39 40 41 42 43 44 45 46 47 48 49 50 51 52

Konkurrenz um die Burg
 RODA

Kassette
 der 162er

Pavillon 1.

Sanatorium Carlo



Ano 1905

1 2 3 4 5 6 7 8 9 10 11 12 13 14 15 16 17 18 19 20 21 22 23 24 25 26 27 28 29 30 31 32 33 34 35 36 37 38 39 40 41 42 43 44 45 46 47 48 49 50 51 52

Entwurf der Kreuzkirche
 hier die Vorderstadt Blau

a	b	c	d
e	f	g	h
i	k	l	m

Rathaus
 19 05



Museums Neubau
 für Geldernhausen



A B C D E F G H I J K L M

N O P Q R S T U V W X Y Z



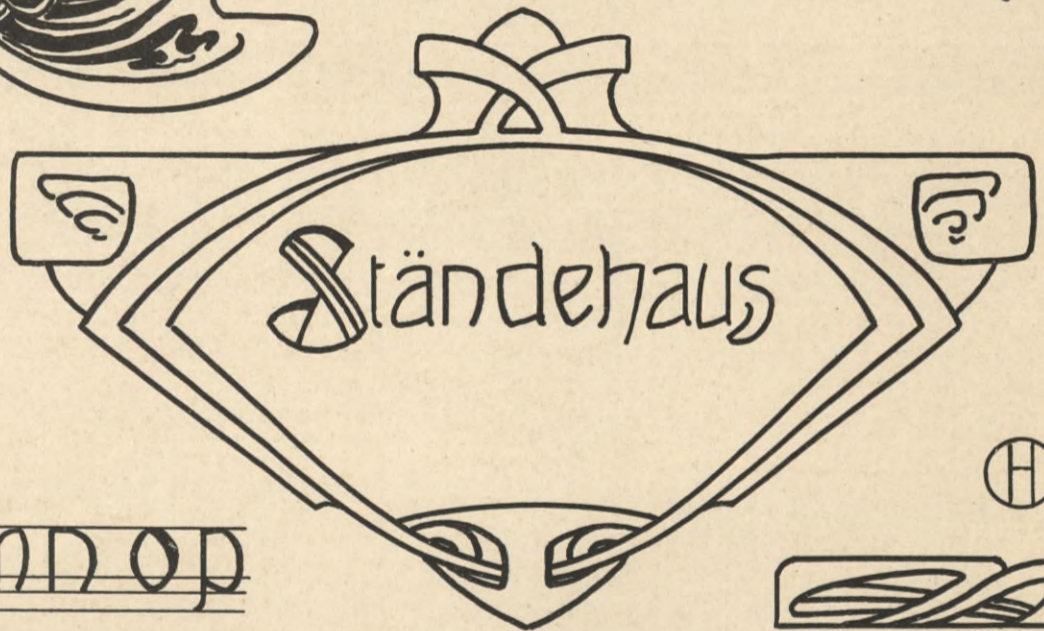
Stadthaus
 Frauen

n o p q r s t u v w x y z æ

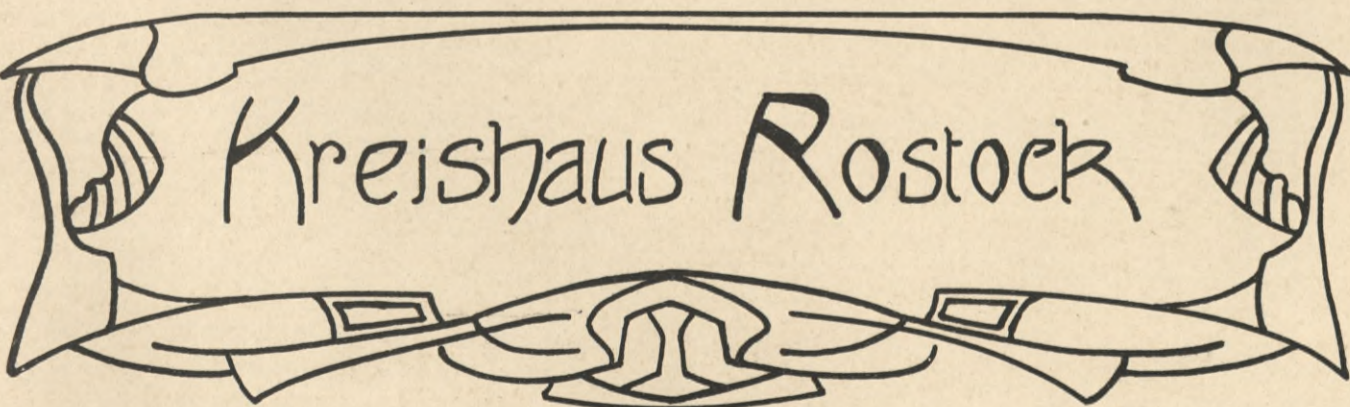
A B C D E F G H I K L M N O



Passaden-
Entwurf
TURM



a b c d e f g h i k l m n o p



q r s t u
v w x y z

z o p q r s t u v w x y z

Stadthalle: 

Entwurf zu einem PORTAL 

A B C D E F G H I J K L M N O P
 Q R S T U V W X Y Z 1 2 3 4 5 6 7 8 9
 a b c d e f g h i k l m n o p q r s t u v w x y z

Blatt II

Schauspielhaus

Bauamt Dresden 

Feuerwache für Altenu.

1917



10021



WYDZIAŁY POLITECHNICZNE KRAKÓW

BIBLIOTEKA GŁÓWNA

IV 35120

L. inw.

Druk. II 10.000.

Biblioteka Politechniki Krakowskiej



100000302892