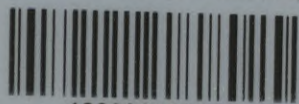


4 1/2, 1.25

Biblioteka Politechniki Krakowskiej



10000300909

x
2,471

PROFILS-TYPES
DES
TRAVAUX MARITIMES
DE LA
RUSSIE.

V. PASTAKOFF.

F. Nr. 24776



ST.-PÉTERSBOURG.
„Société D'Impression Artistique“, Perspective Anglaise, 28.
1901.

01-49
2471



III 18281

AUX
INGÉNIEURS
DES PORTS

de la BELGIQUE,

de l'ESPAGNE,

de la FRANCE,

de la GRANDE BRETAGNE,

de l'ITALIE,

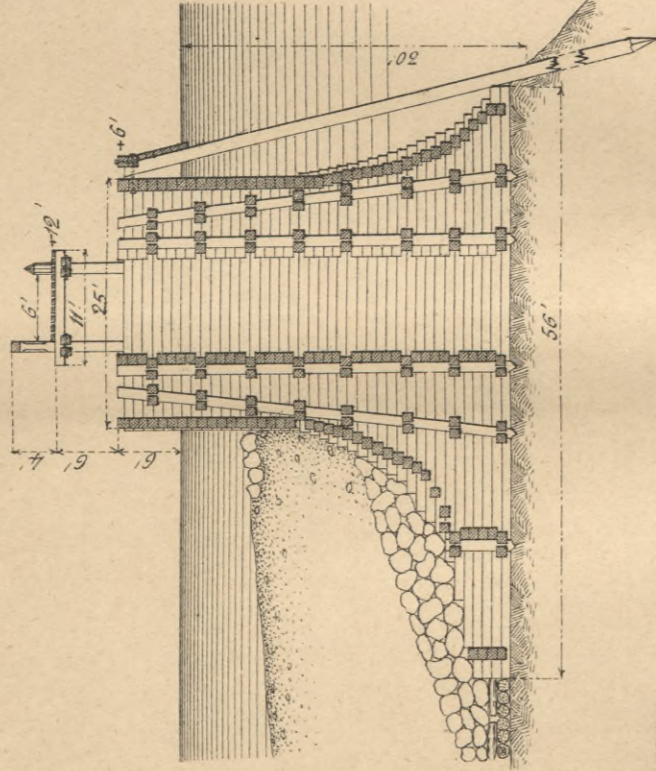
visités en 1896, 1897—99 et 1901

je dédie cette édition

V. Pastakoff.

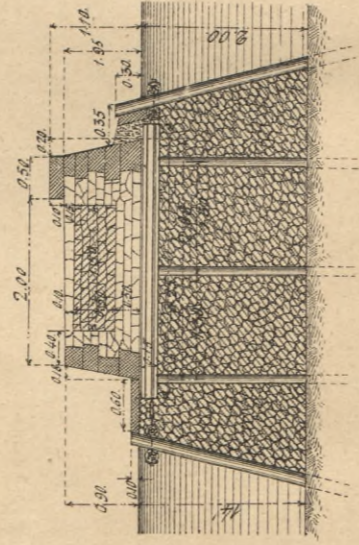
Vindau

(Mer Baltique)
Môle Sud
(124 sag.)
Construit au XVIII siècle
Reconstruit en 1852-62.



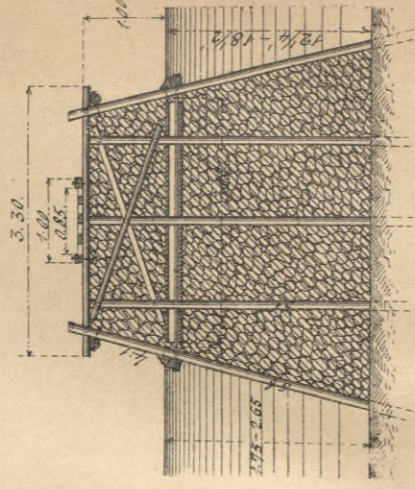
Marioupol

(Mer d'Azow).
La Digue, Môles Ouest et Est
(660 sag.) (759 sag.) (244 sag.)
1886-91.



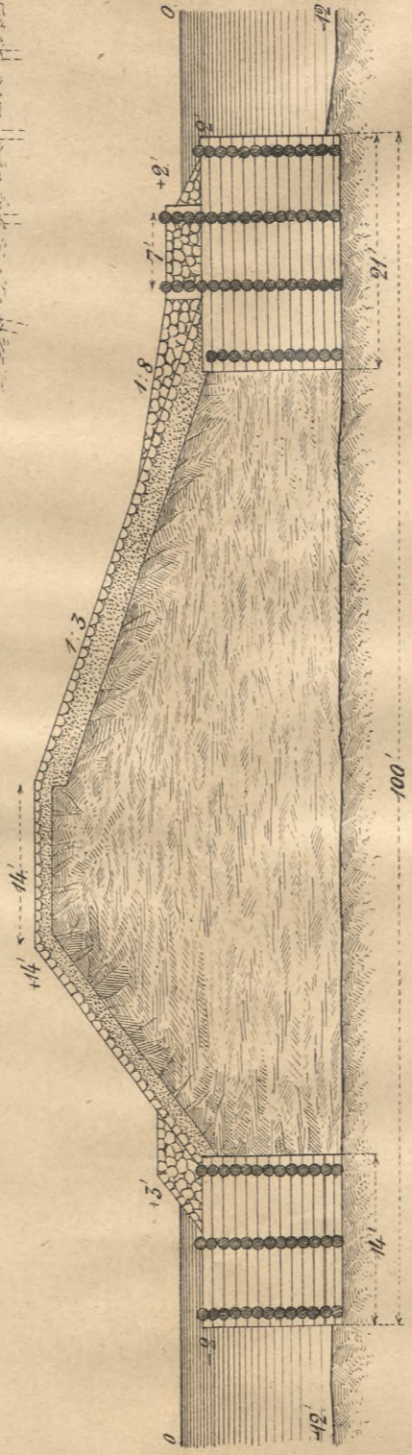
Libau

(Mer Baltique)
Digue et Môles Intérieures
(310 sag.) (630,45 sag.)
1894-96.



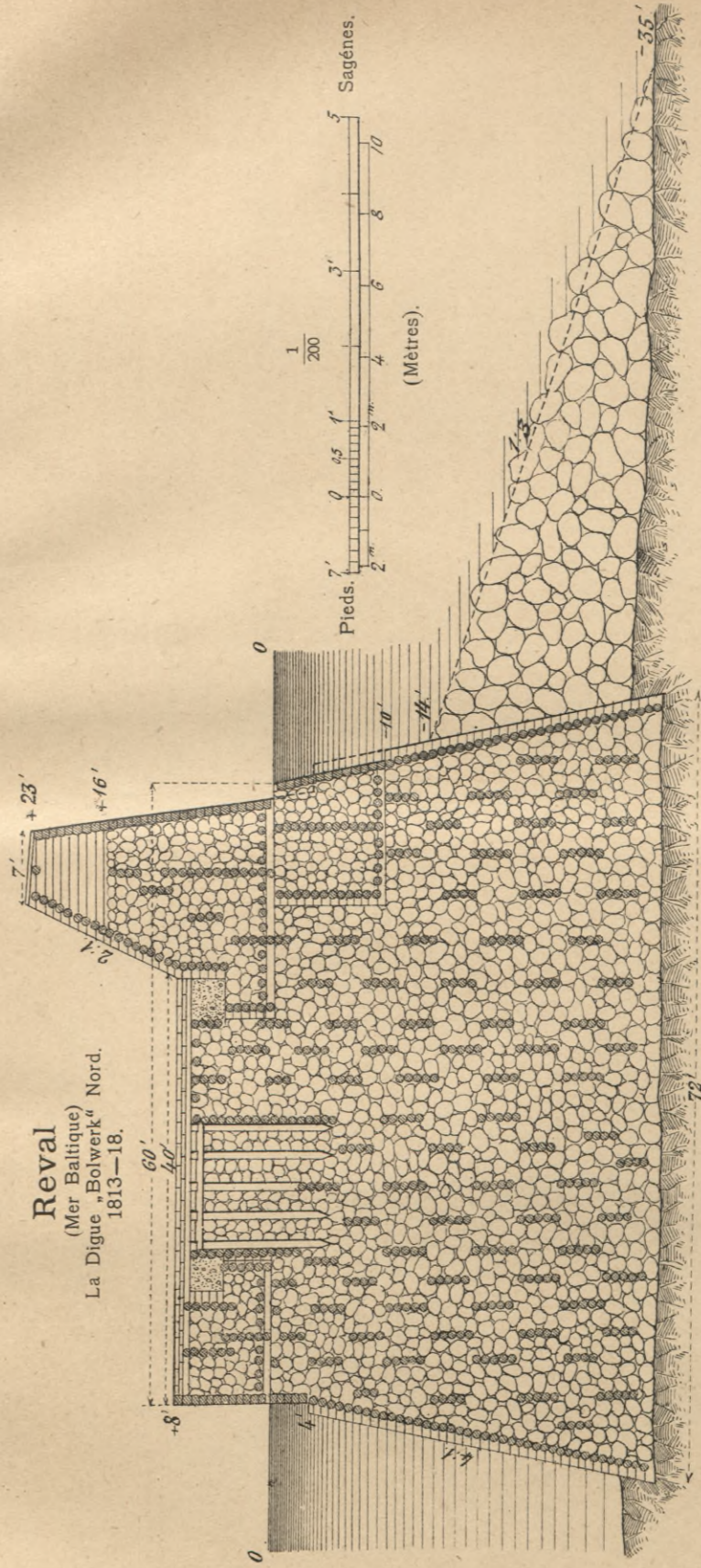
St. Pétersbourg

(Mer Baltique)
Dignes du Canal Maritime
Longueur totale du Canal—26 verstes
(27,74 kms.)
Longueur de la partie endiguée—9 verstes
(9,60 kms.)
1878-85.

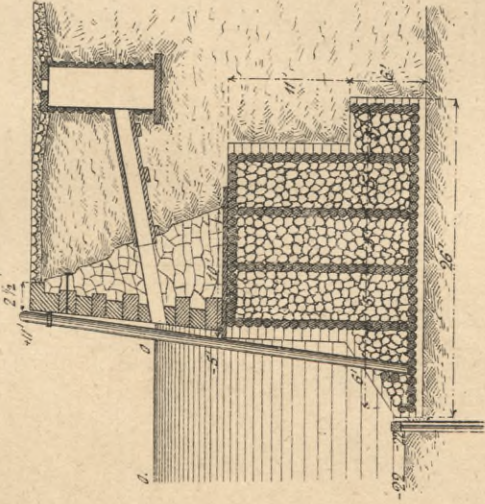


Reval

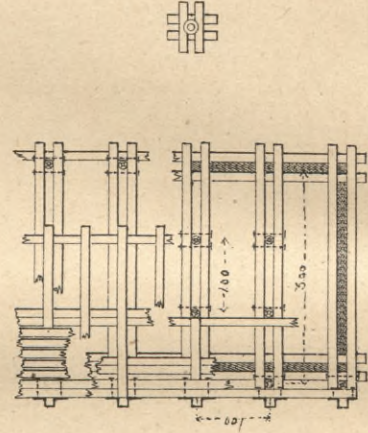
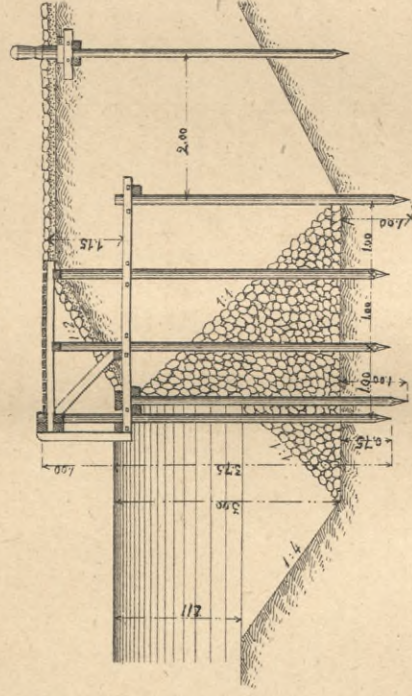
(Mer Baltique)
La Digue „Boiwerk“ Nord.
1813-18.



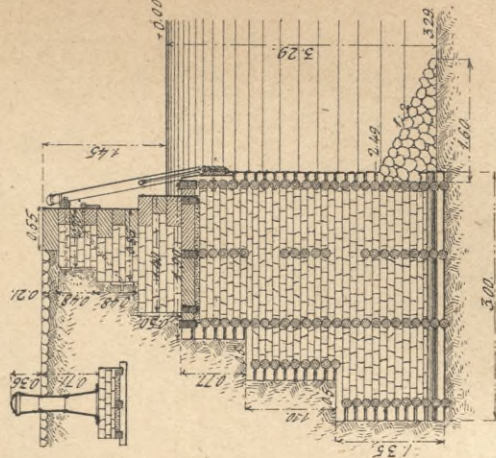
St. Pétersbourg
(Mer Baltique)
Quai du Bassin Coutoulev.
1880—85.



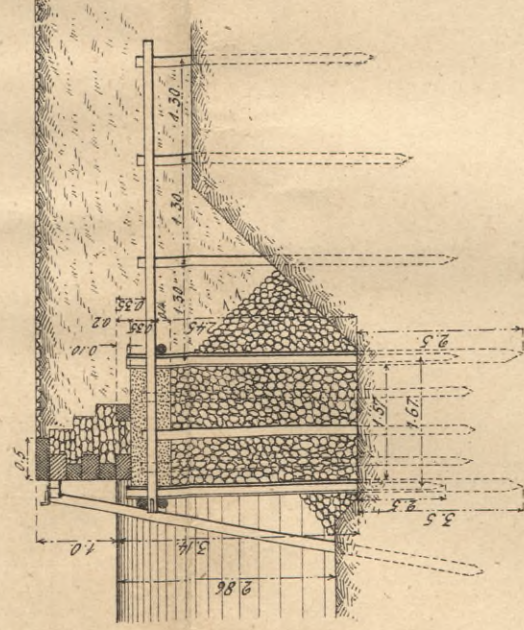
Guénitchesk
(Mer d'Azow)
Quai du port
1899.



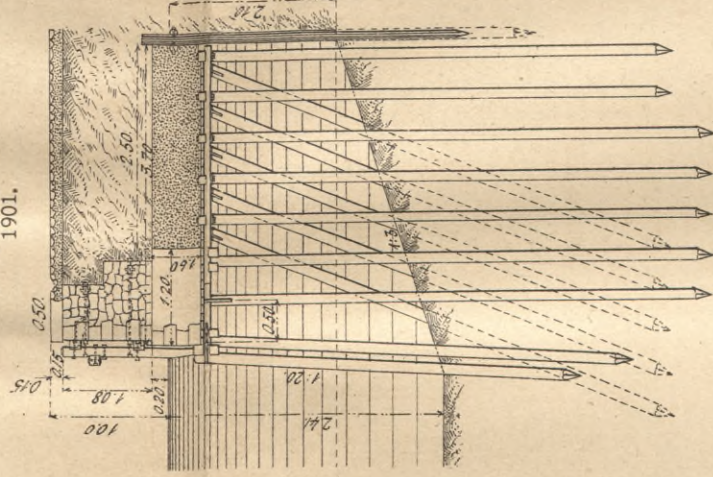
Reval
(Mer Baltique)
Quai du Bassin Neuf
1888—86.



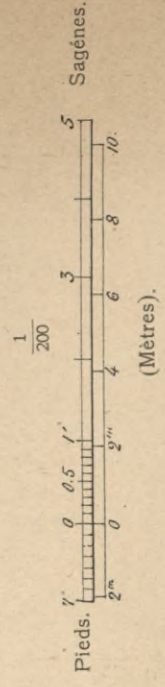
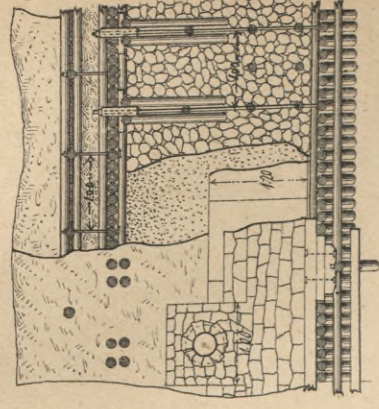
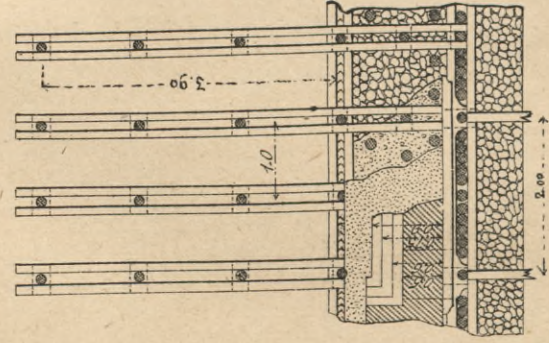
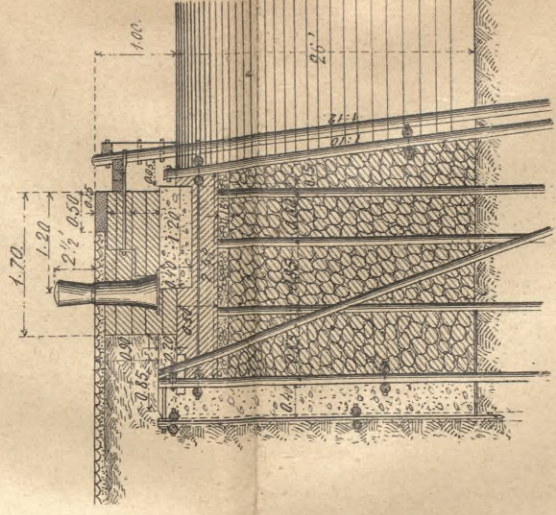
Nicolaïev
(Mer Noire)
Quai du port
1886—89.



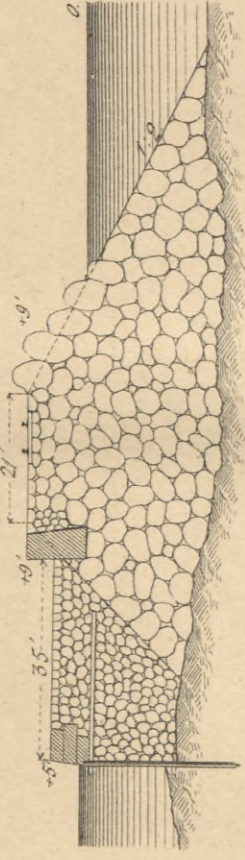
Riga
(Mer Baltique)
Quai du Bassin de la Gare
(Projet approuvé).
1901.



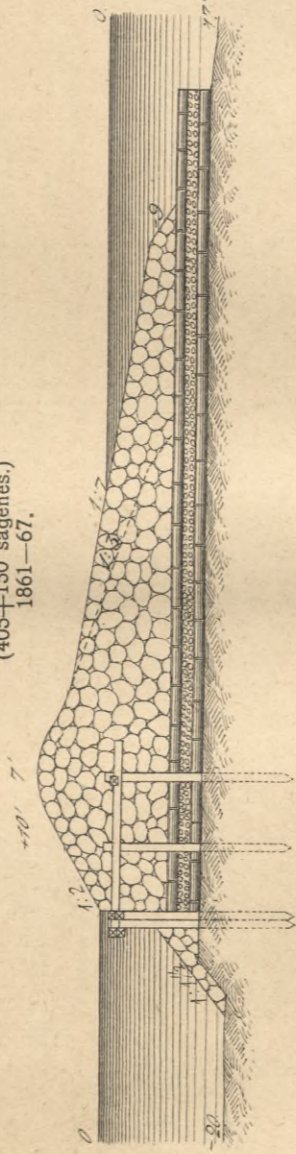
Libau
(Mer Baltique)
Quai de la Rade
1892—95.



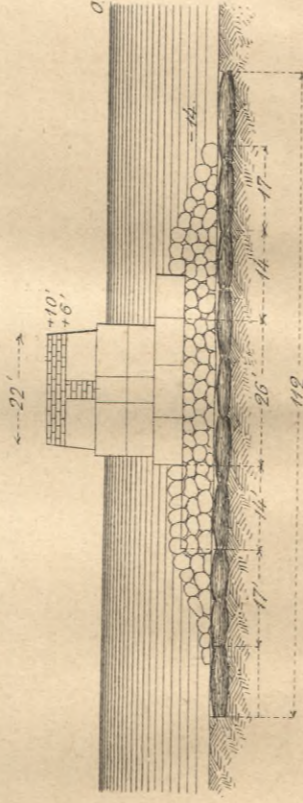
Petrovsk
 (Mer Caspienne)
 Môle Nord et Sud
 (252,5 sag.) (444,5 sag.)
 1875—81.



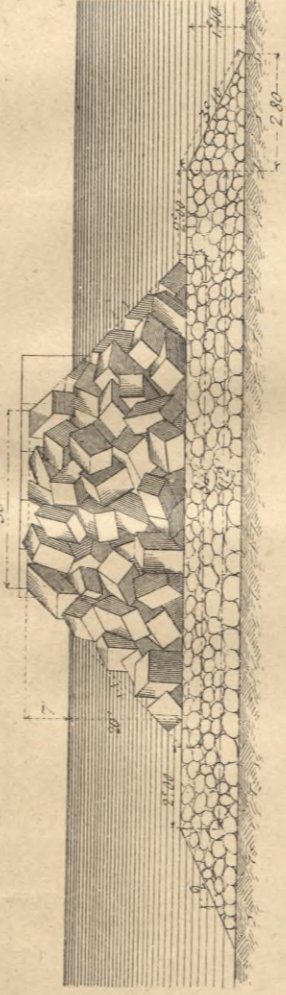
Libau
 (Mer Baltique)
 Digue de l'ancienne entrée
 (405+150 sagènes.)
 1861—67.



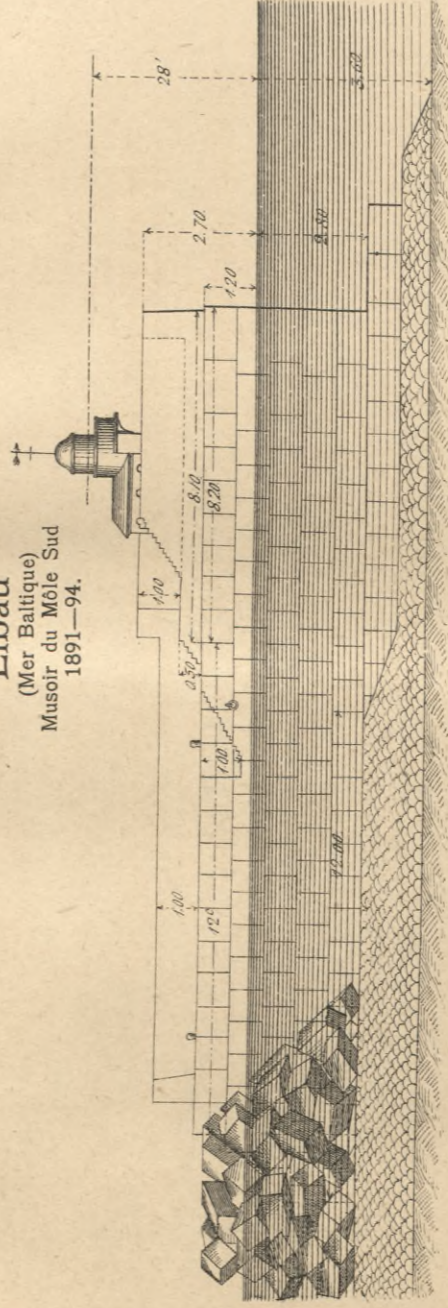
Libau
 (Mer Baltique)
 Môle Sud
 (138 sag.)
 1885—88.



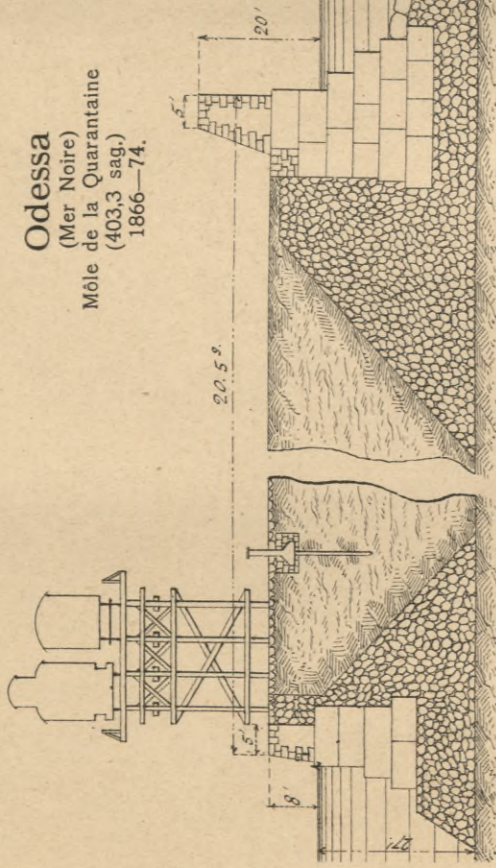
Libau
 (Mer Baltique)
 Breakwaters (1184,5 sag.) Nord et Sud et
 le Môle Sud (prolongement)
 (421,5 sag.)
 1891—94.



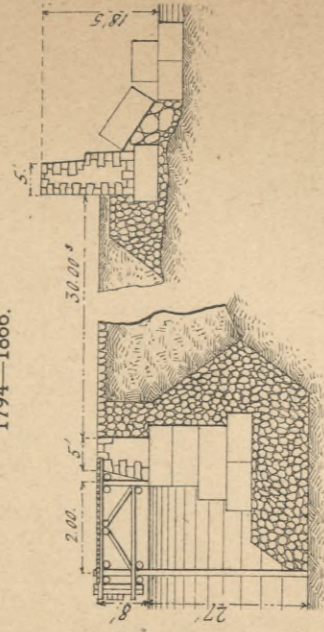
Libau
 (Mer Baltique)
 Musoir du Môle Sud
 1891—94.



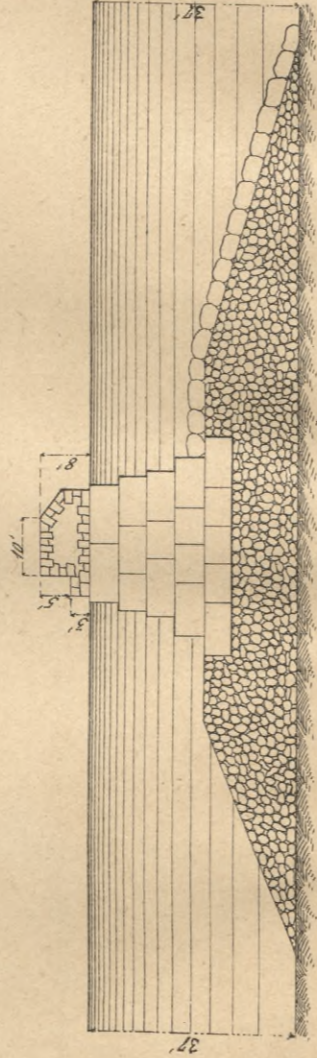
Odessa
(Mer Noire)
Môle de la Quarantaine
(403,3 sag.)
1866-74.



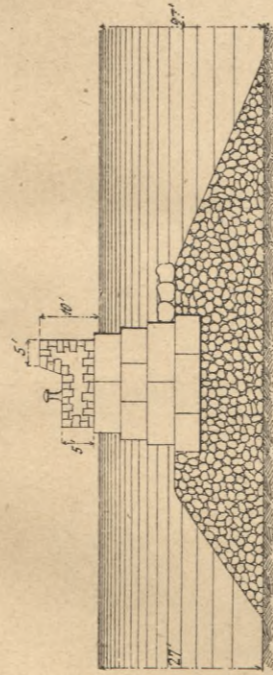
Odessa
(Mer Noire)
Môle de la Quarantaine
(403,3 sag.)
(Extrémité Est)
1794-1866.



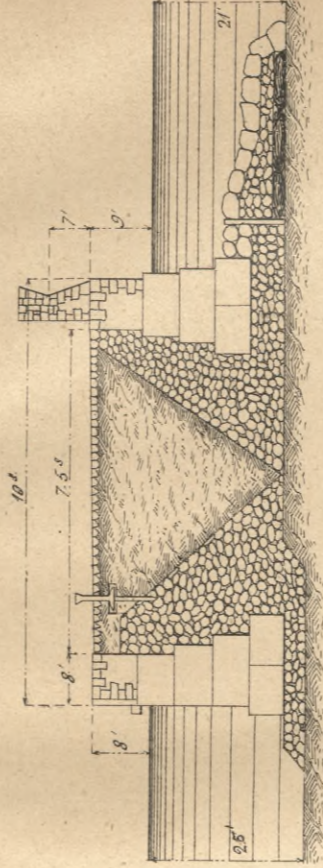
Odessa
(Mer Noire)
Môle de la Rade
(303 sag.)
1869-79.



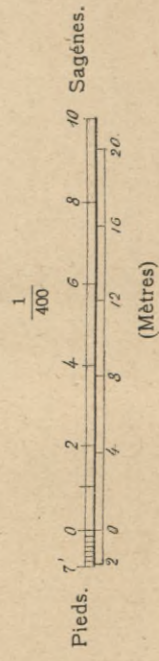
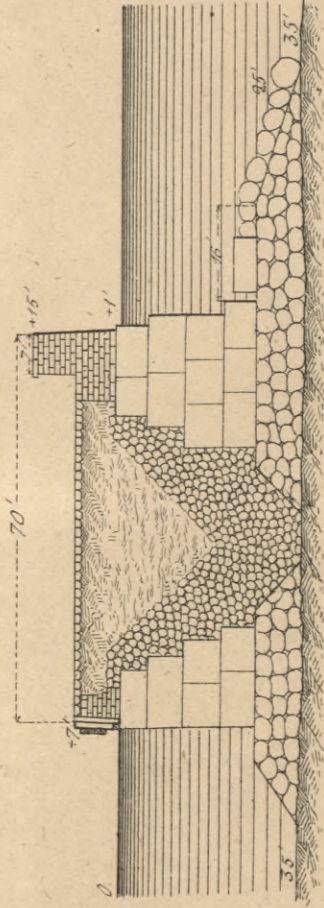
Odessa
(Mer Noire)
La Grande Digue
(573 sag.)
1879-82.



Odessa
(Mer Noire)
Môle au Naphte
(524 sag.)
1890-93.

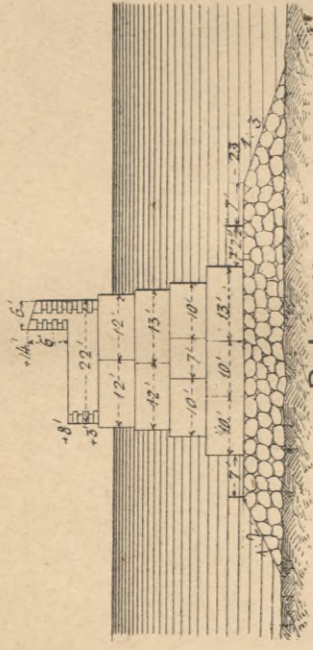


Yalta
(Mer Noire)
Le Môle (147,6+100 sagènes)
1887-91; 1899-(02).



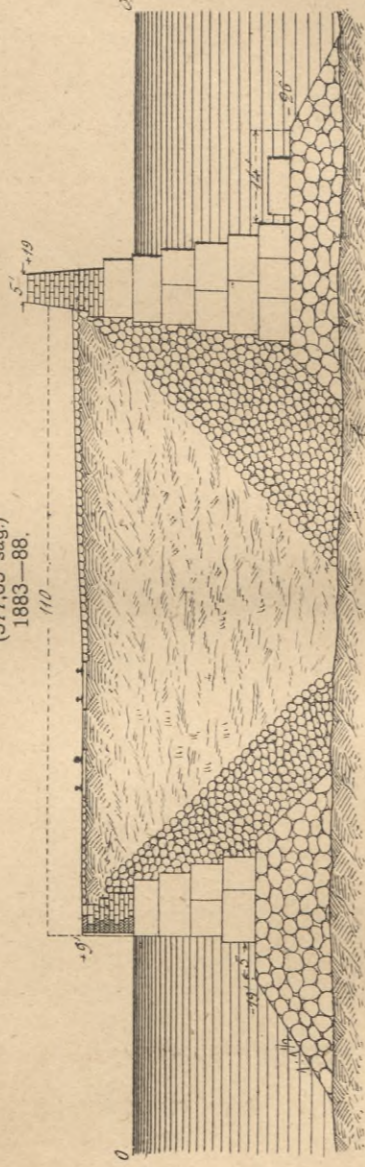
Novorossiisk

(Mer Noire)
Môles Ouest et Est
501.10 sag) (493.92 sag.)
1890—96.



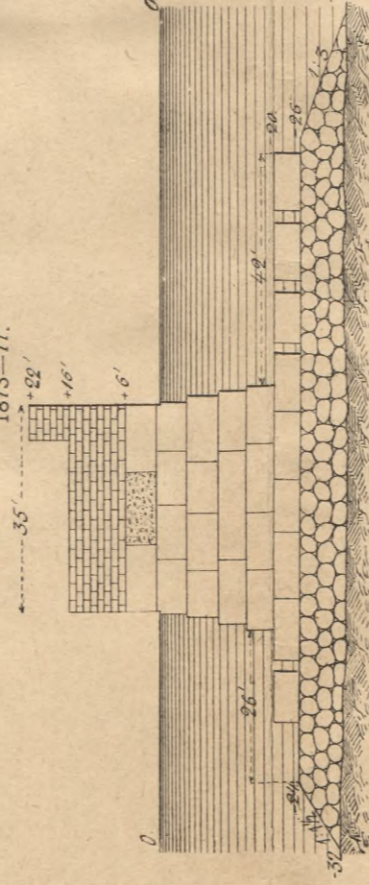
Batoum

(Mer Noire)
Môle Sud-Est
(377.65 sag.)
1883—88.



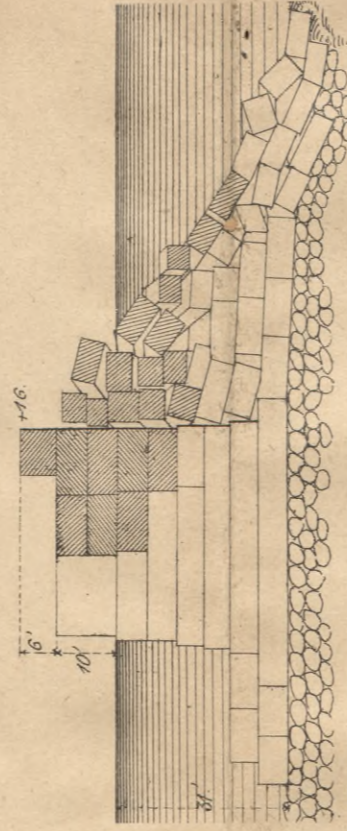
Poti

(Mer. Noire)
Môles Nord et Sud
(447 sag) (282.5 sag.)
1873—77.



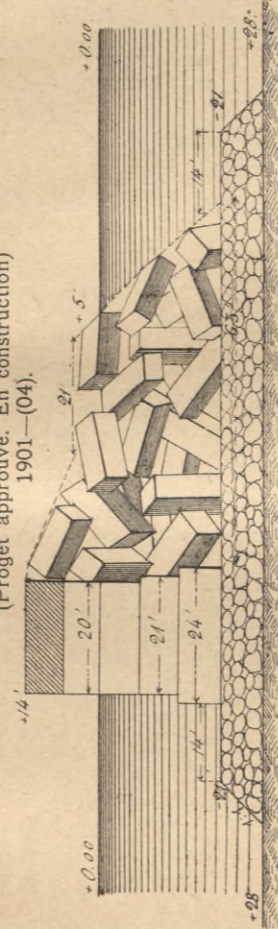
Poti

(Mer Noire)
Môles Nord et Sud (Etat actuel des parties les plus avariées).
1889.



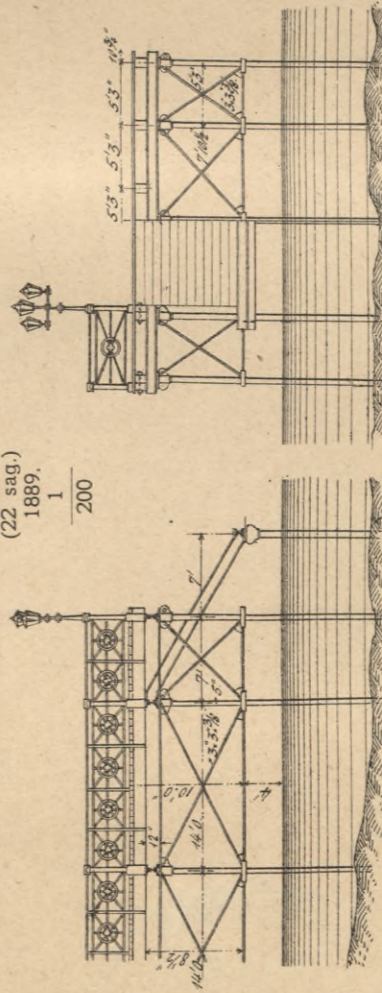
Poti

Digue d'abri (240 sag.) de la nouvelle entrée
(Projet approuvé. En construction)
1901—(04).



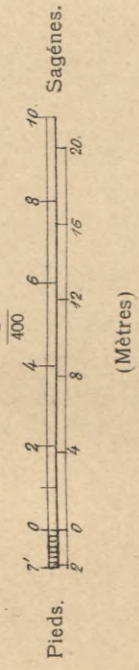
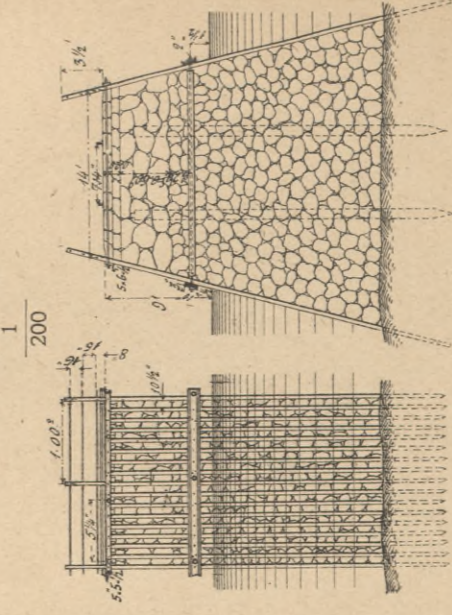
Soukhoum

Jotée métallique
(22 sag.)
1889.



Touapsé

(Mer Noire)
Môle en rails
(115 sag.)
1896—97.





WYDZIAŁY POLITECHNICZNE KRAKÓW

BIBLIOTEKA GŁÓWNA

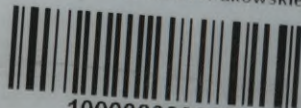


L. inw.

18281

Kdn., Czapskich 4 — 678. 1. XII. 52. 10.000

Biblioteka Politechniki Krakowskiej



10000300909