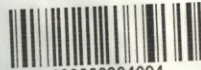


Biblioteka Politechniki Krakowskiej



10000304094

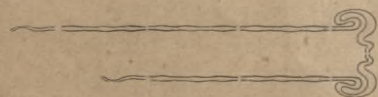
SCHEMATISCHE GRUNDRISS-SERIEN

ALS TECHNISCHE GRUNDLAGE FÜR DIE VERFASSUNG VON MODERNEN
ANFORDERUNGEN DER HYGIENE ENTSPRECHENDEN

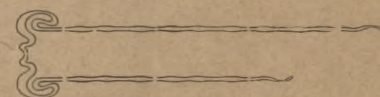
BAUORDNUNGEN.

VERFASST VON A. LOTZ, ARCHITEKT IN WIEN.

9491/111



SERIE II.



BIBLIOTEKA
c. k. państw. szkoły przemysłowej
W KRAKOWIE.

WIEN 1911.

SELBSTVERLAG DES VERFASSERS.

NACHDRUCK VORBEHALTEN.

Biblioteka Politechniki Krakowskiej



10000304094

Das allmähliche Ansteigen der Hoffreihaltungs-Prozente bei systematischem Anwachsen der Flächen quadratischer Mittelbaustellen bei stufenweiser Verlängerung bei der Gassenfronten von Meter zu Meter.

Beiderseitige Gassenfluchtlänge in m	Fläche der Baustelle in m ²	Fläche des Hofes in m ²	Fläche des Hofes in % der Grundfl.	Zahl der Wohnungen per Geschoss	Anmerkung
10	100	13.20	13.20	1 Wohnung	
11	121	16.67	13.77	"	
12	144	18.75	13.00	"	
13	169	22.40	13.27	"	
14	196	28.96	14.77	"	
15	225	39.84	17.66	"	
16	256	47.62	18.60	"	
17	289	57.50	19.90	"	
18	324	58.80	18.14	2 Wohnungen	
19	361	68.00	18.83	"	
19	361	70.60	19.55	"	
20	400	81.00	20.25	"	
21	441	88.50	20.06	"	
22	484	101.50	21.05	3 Wohnungen	
23	529	112.42	21.25	"	
24	576	131.27	22.79	"	
25	625	145.47	23.27	"	
26	676	156.82	23.19	4 Wohnungen	
27	729	174.35	23.91	"	
28	784	185.86	23.70	"	
29	841	200.58	23.85	"	
30	900	218.04	24.22	"	

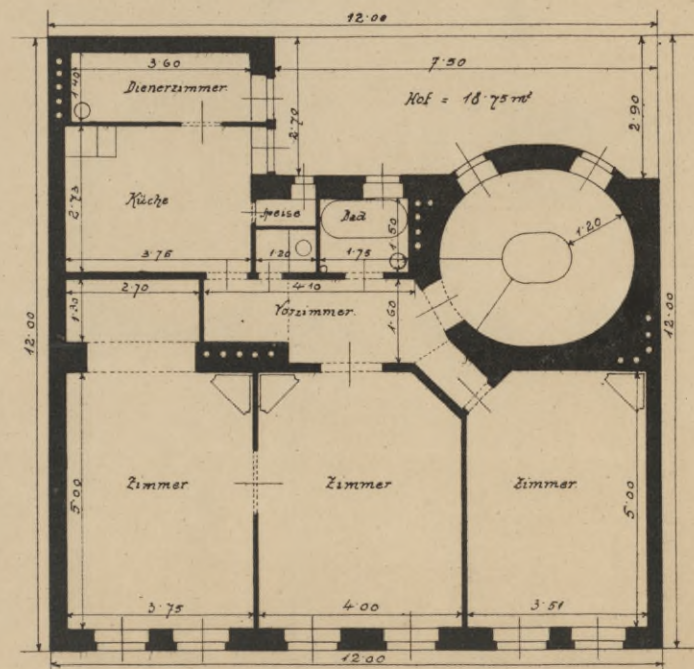
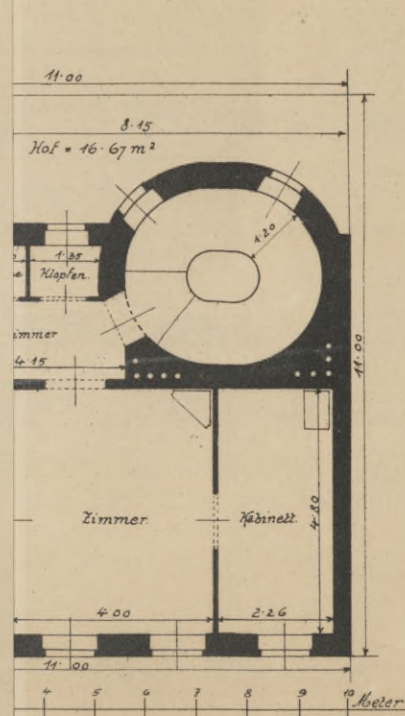
Immer nur ein Hof je 2 Anrainer, der 2 gegen je 2 Anrainer offene parzellennach aufmächtig ansteigende Höfe.

$$11 = 121.00 \text{ m}^2$$

$$16.67 \text{ m}^2 = 13.77 \%$$

$$F = 12 \times 12 = 144.00 \text{ m}^2$$

$$\text{Hof} = 16.75 \text{ m}^2 = 13.00 \%$$





IV-300288

~~IV. 23. 650~~

0491 / III

BIBLIOTEKA
Pakietowej Szkoły Przemysłowej
w Krakowie.

Akc. Nr. ~~D-2079~~ 153

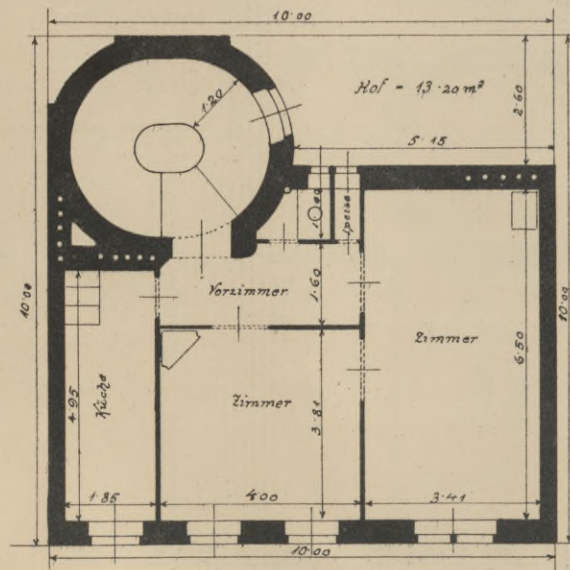
BZU-4-316/2014



SERIE II.

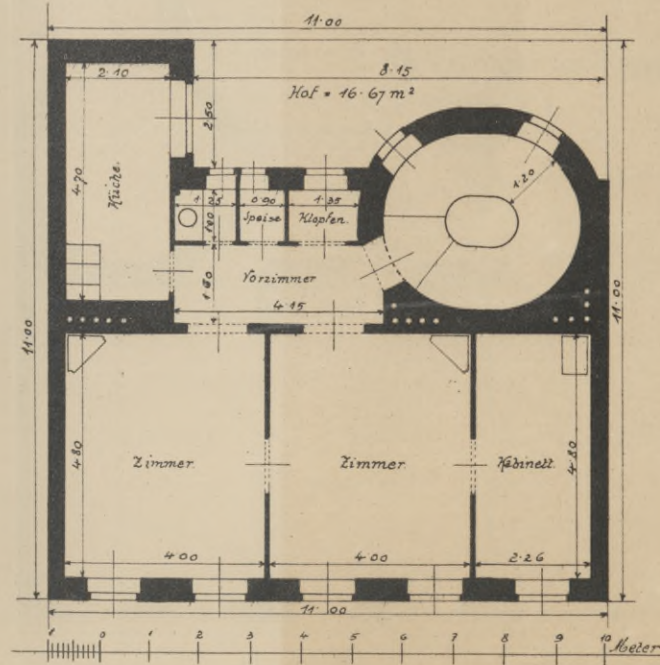
$$F = 10 \times 10 = 100.00 \text{ m}^2$$

$$\text{Hof} = 13.20 \text{ m}^2 = 13.20\%$$



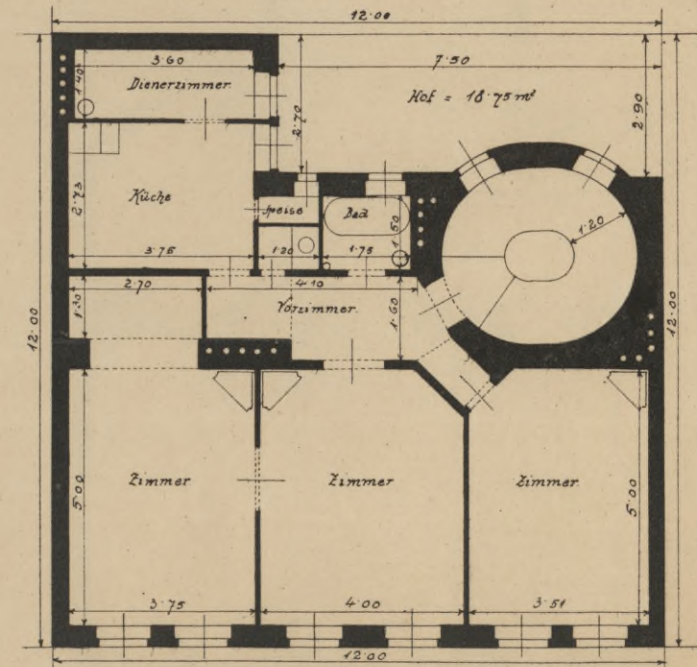
$$F = 11 \times 11 = 121.00 \text{ m}^2$$

$$\text{Hof} = 16.67 \text{ m}^2 = 13.77\%$$



$$F = 12 \times 12 = 144.00 \text{ m}^2$$

$$\text{Hof} = 18.75 \text{ m}^2 = 13.00\%$$



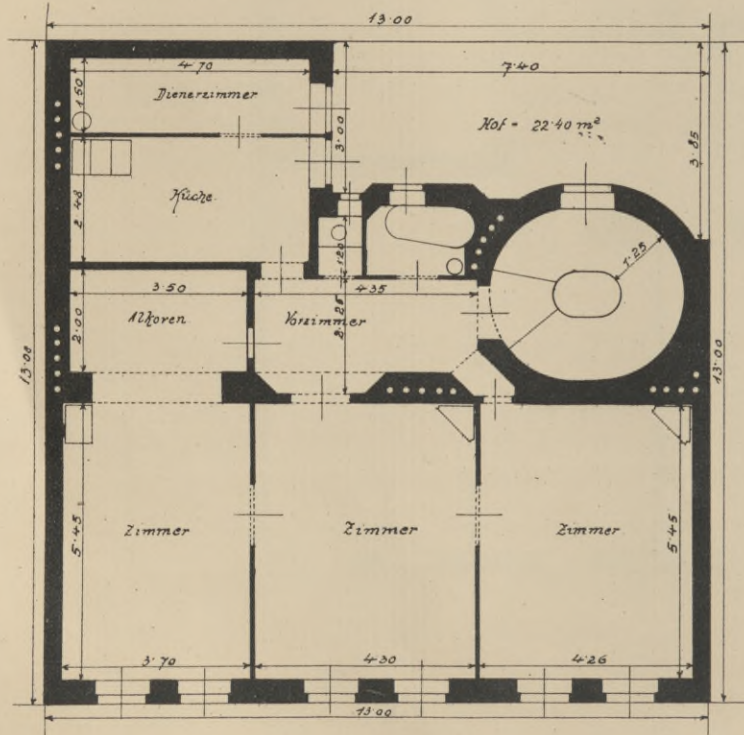
9491 / 74

BIBLIOTEKA
Państwowej Szkoły Przemysłowej
w Krakowie.

SERIE II.

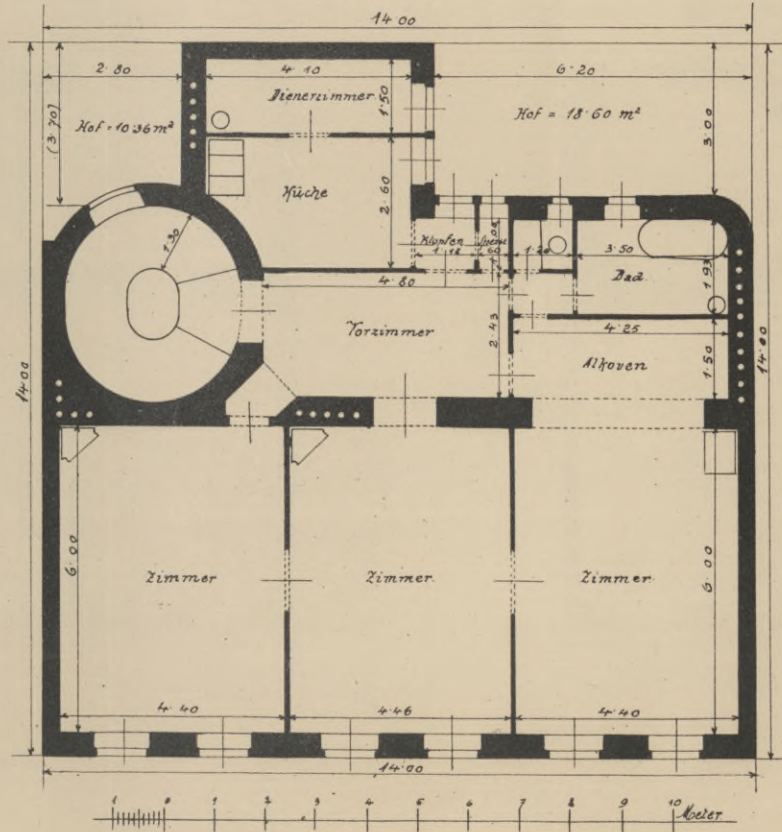
$$F = 13 \times 13 = 169.00 \text{ m}^2$$

$$\text{Hof} = 22.40 \text{ m}^2 = 13.75\%$$



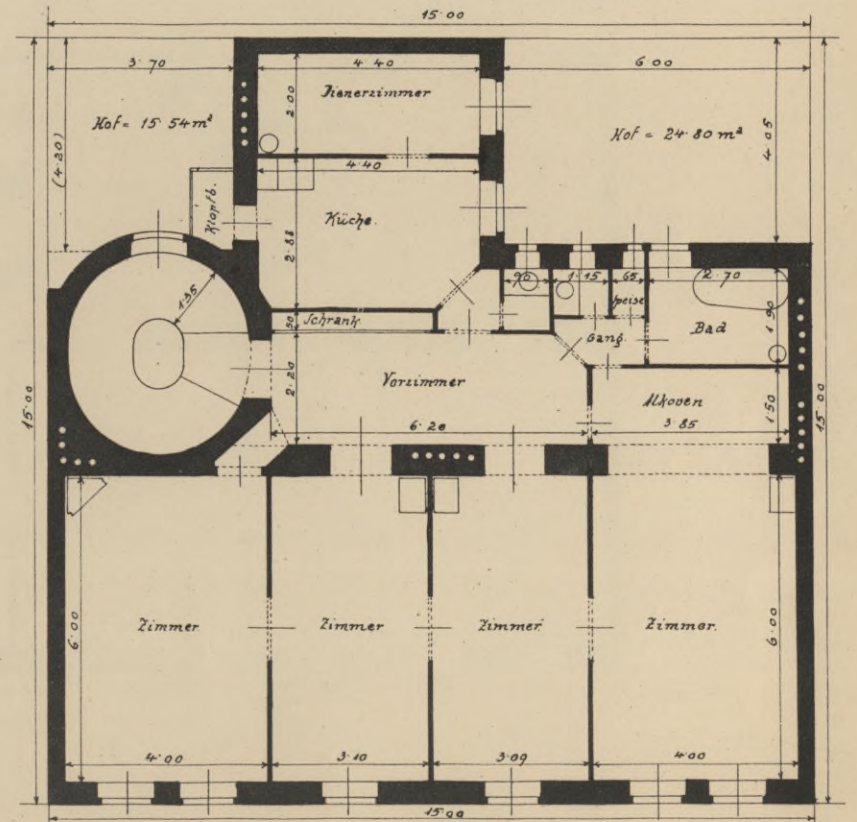
$$F = 14 \times 14 = 196.00 \text{ m}^2$$

$$\text{Hof} = 28.96 \text{ m}^2 = 14.77\%$$



$$F = 15 \times 15 = 225.00 \text{ m}^2$$

$$\text{Hof} = 39.84 \text{ m}^2 = 17.66\%$$



1 2 3 4 5 6 7 8 9 10 Meter

9491

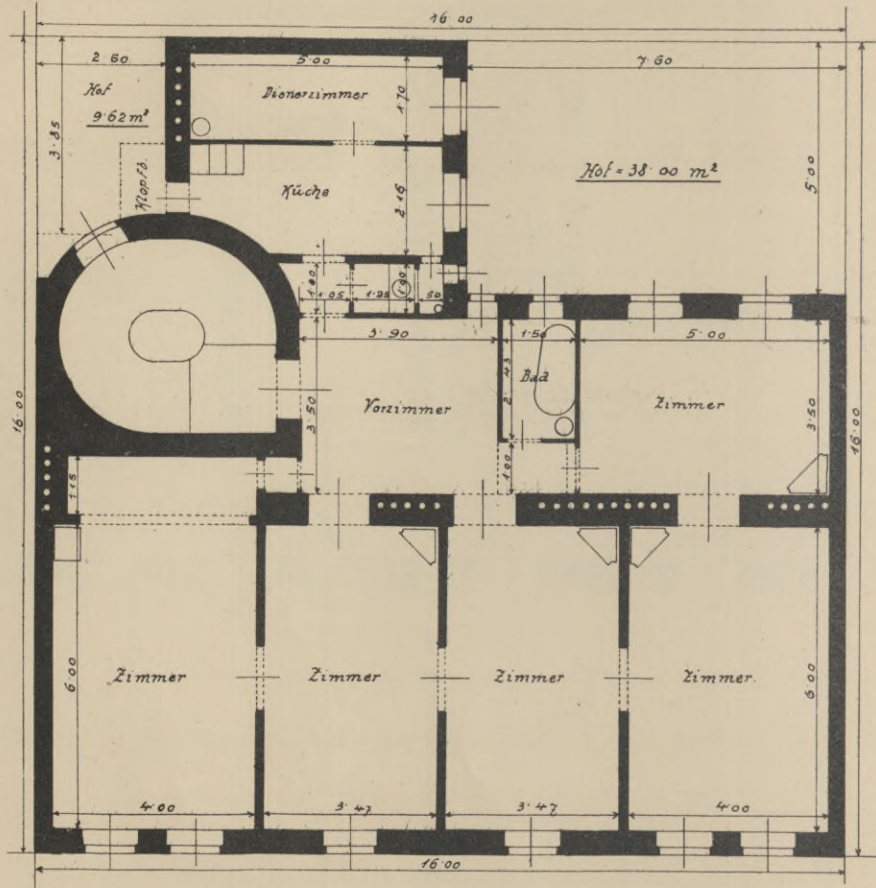
11

BIBLIOTEKA
Państwowej Szkoły Płomysłowej
w Krakowie.

SERIE II.

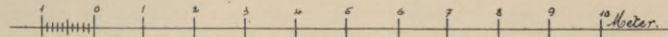
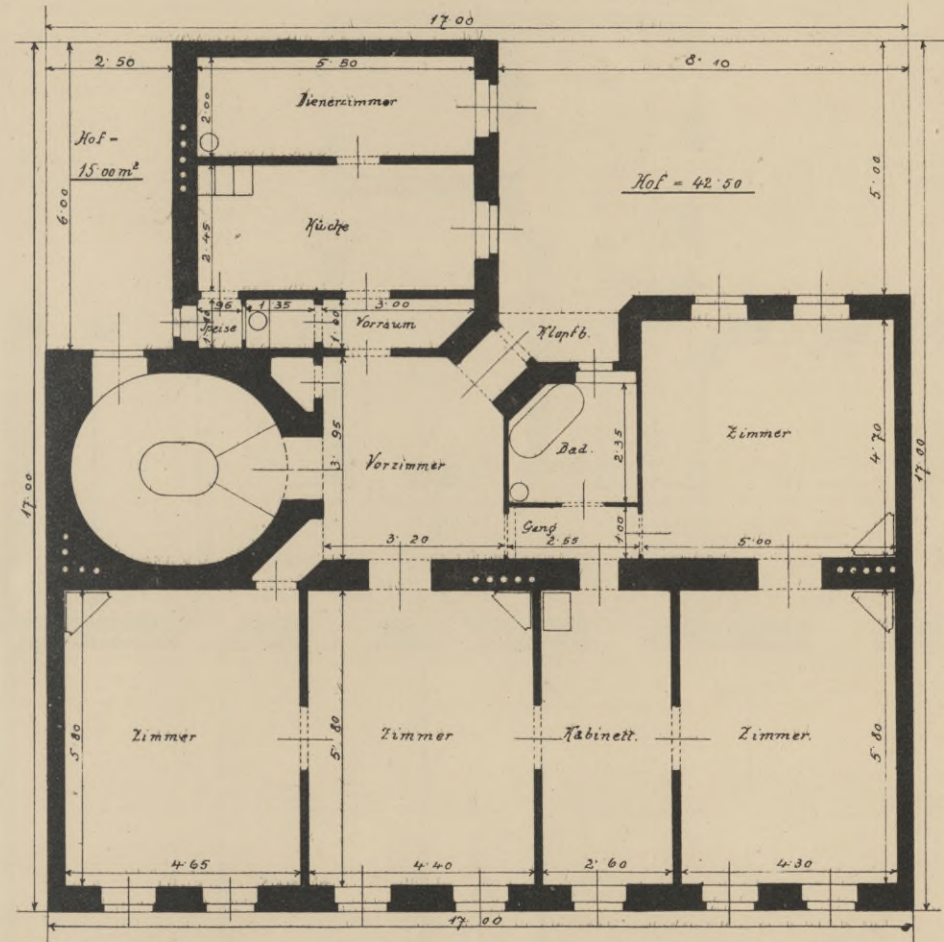
$F = 16 \times 16 = 256.00 \text{ m}^2$

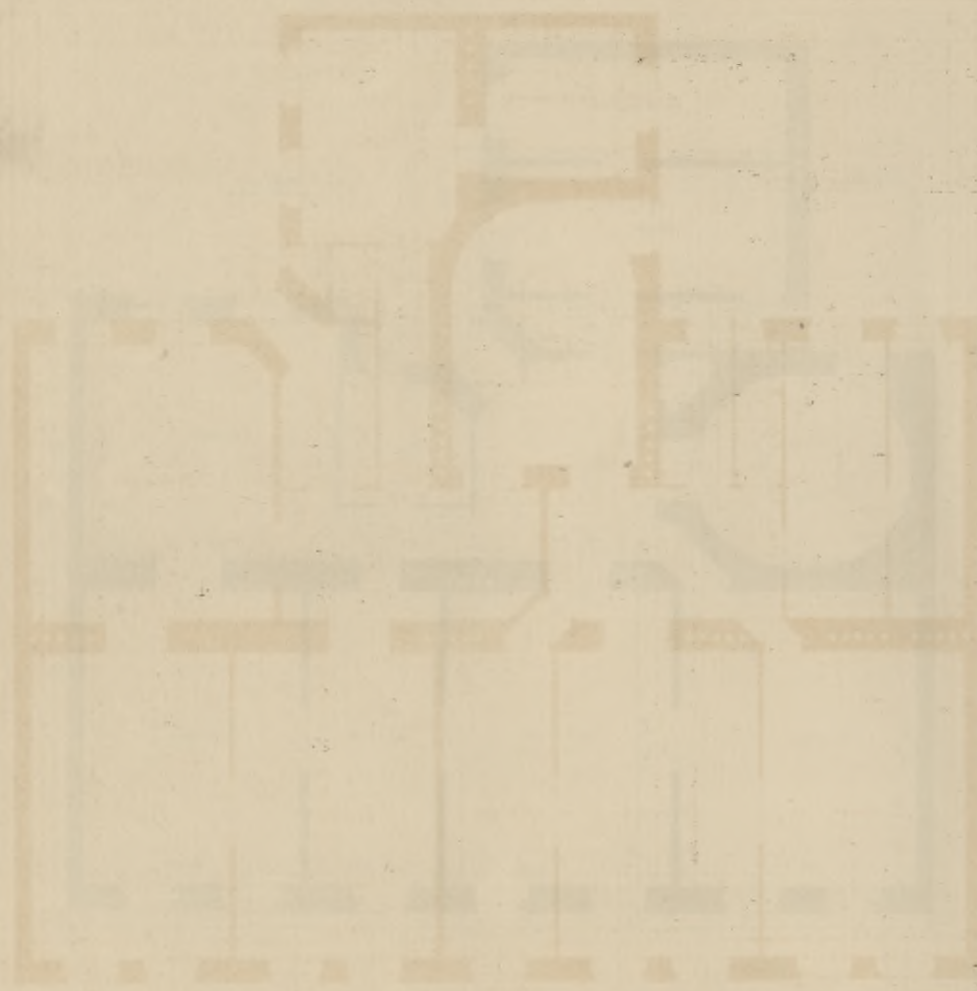
$\text{Höfe} = 47.62 \text{ m}^2 = 18.60\%$



$F = 17 \times 17 = 289.00 \text{ m}^2$

$\text{Höfe} = 57.50 \text{ m}^2 = 19.90\%$





3491 *7/4*
BIBLIOTEKA
Państwowej Szkoły Przemysłowej
w Krakowie.

SERIE II.

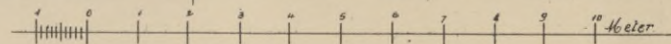
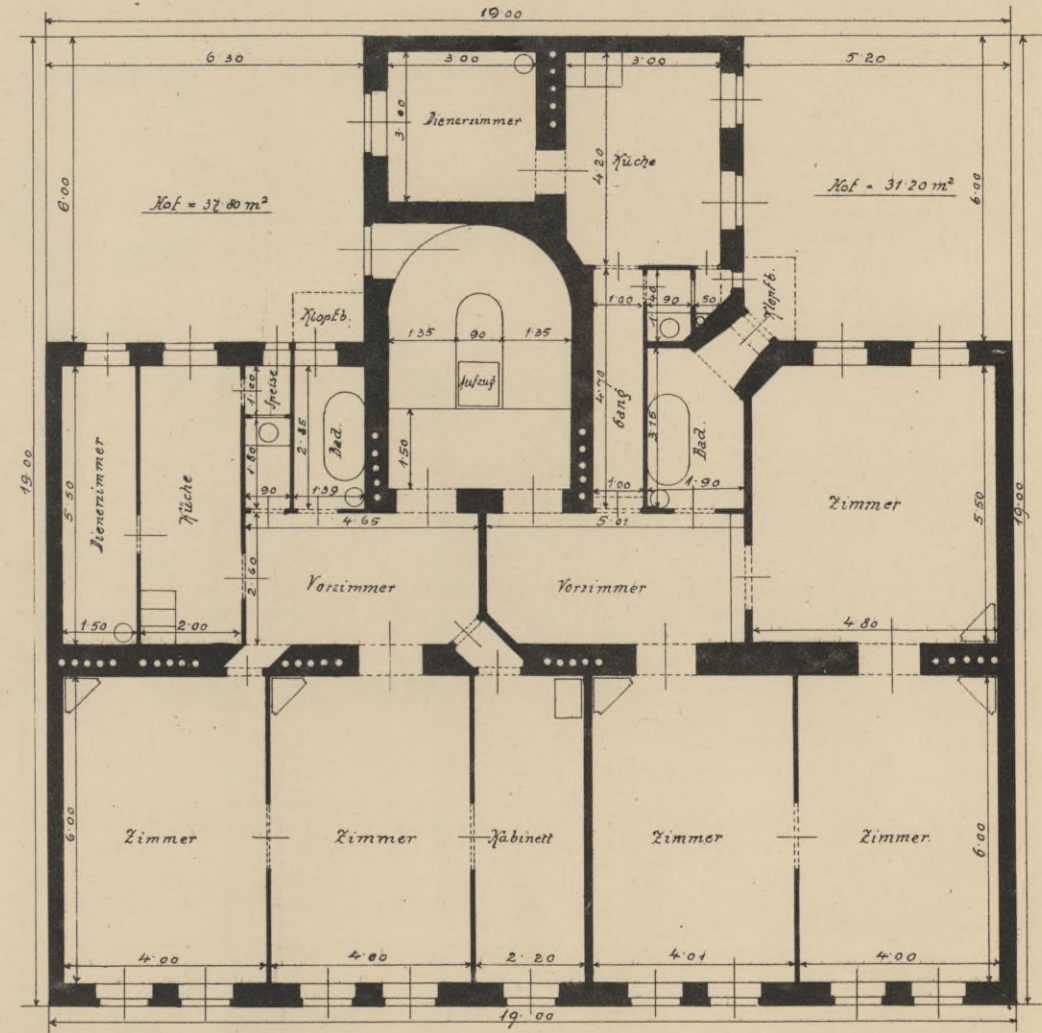
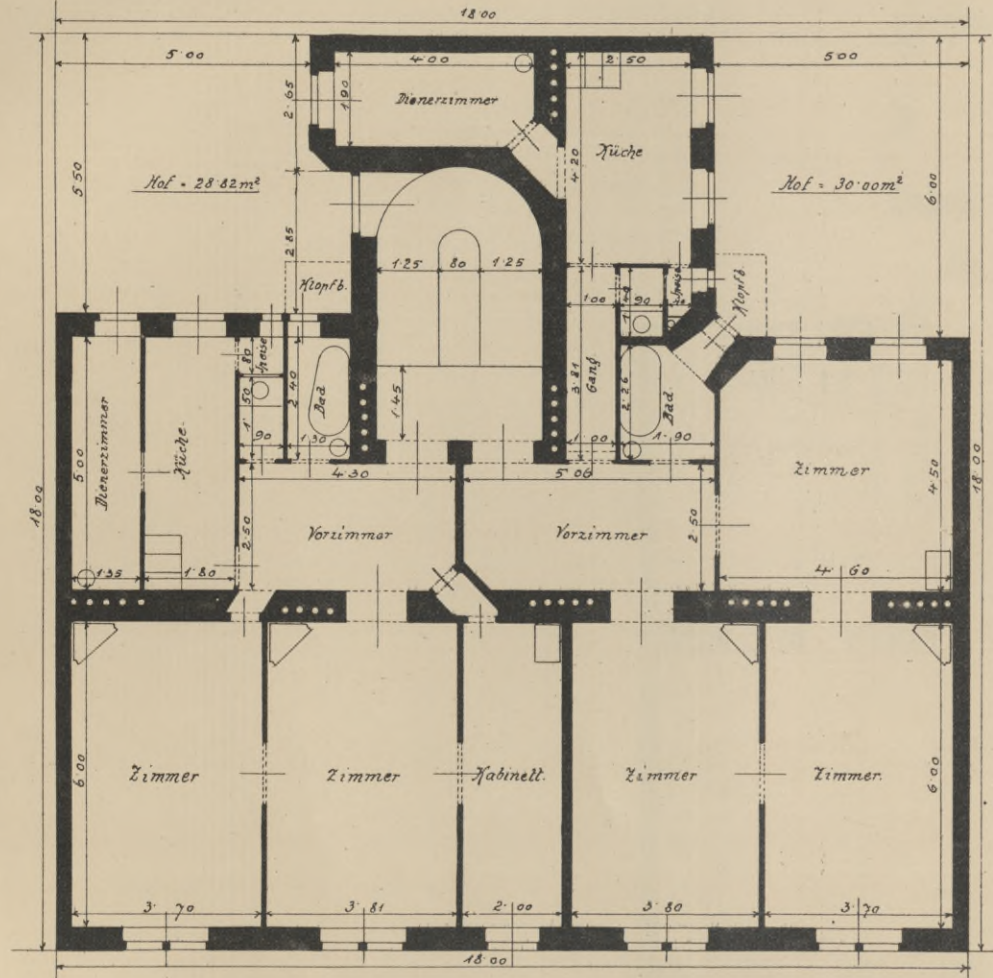
$F = 18 \times 18 = 324.00 \text{ m}^2$

$\text{Höfe} = 58.80 \text{ m}^2 = 18.14 \%$

(2. WOHNUNGEN.)

$F = 19 \times 19 = 361.00 \text{ m}^2$

$\text{Höfe} = 68.00 \text{ m}^2 = 18.83 \%$



9491

194

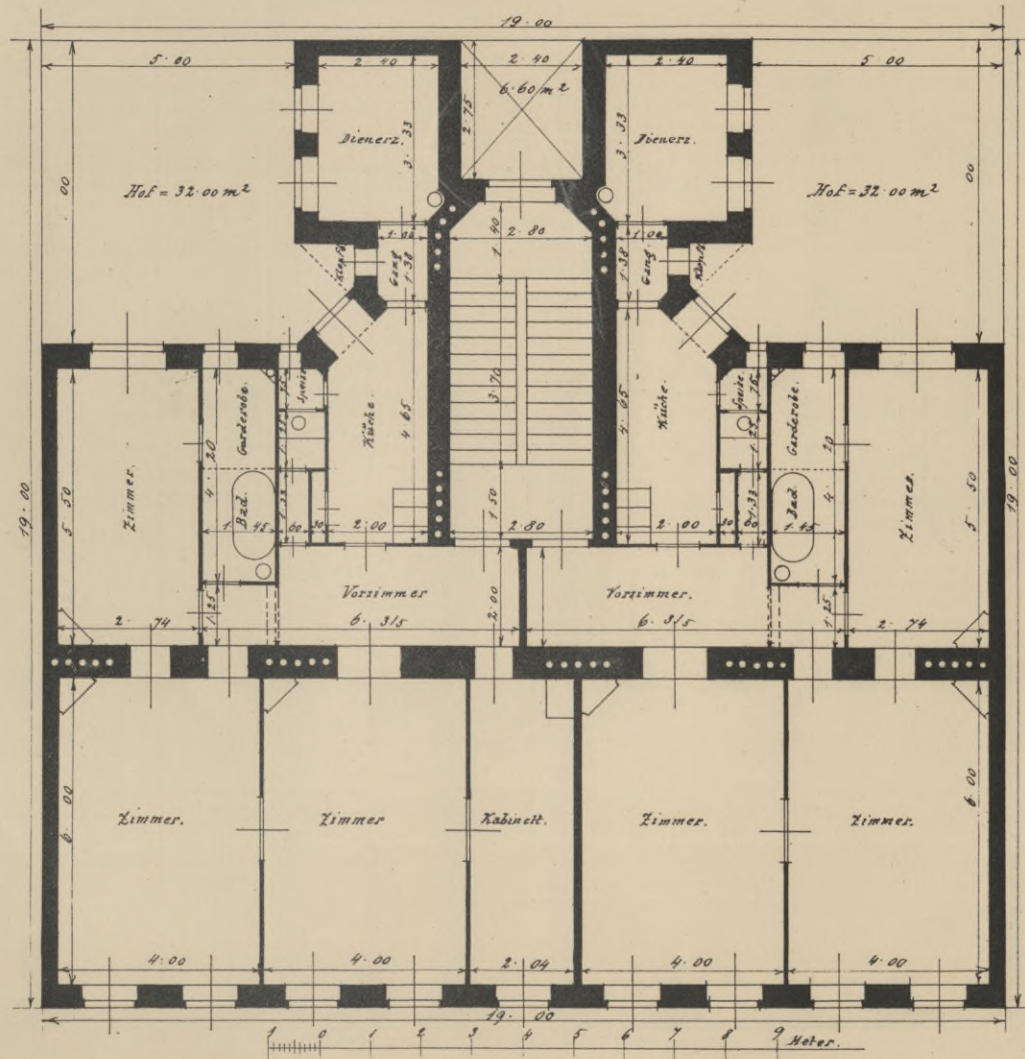
BIBLIOTEKA
Państwowej Szkoły Przemysłowej
w Krakowie.

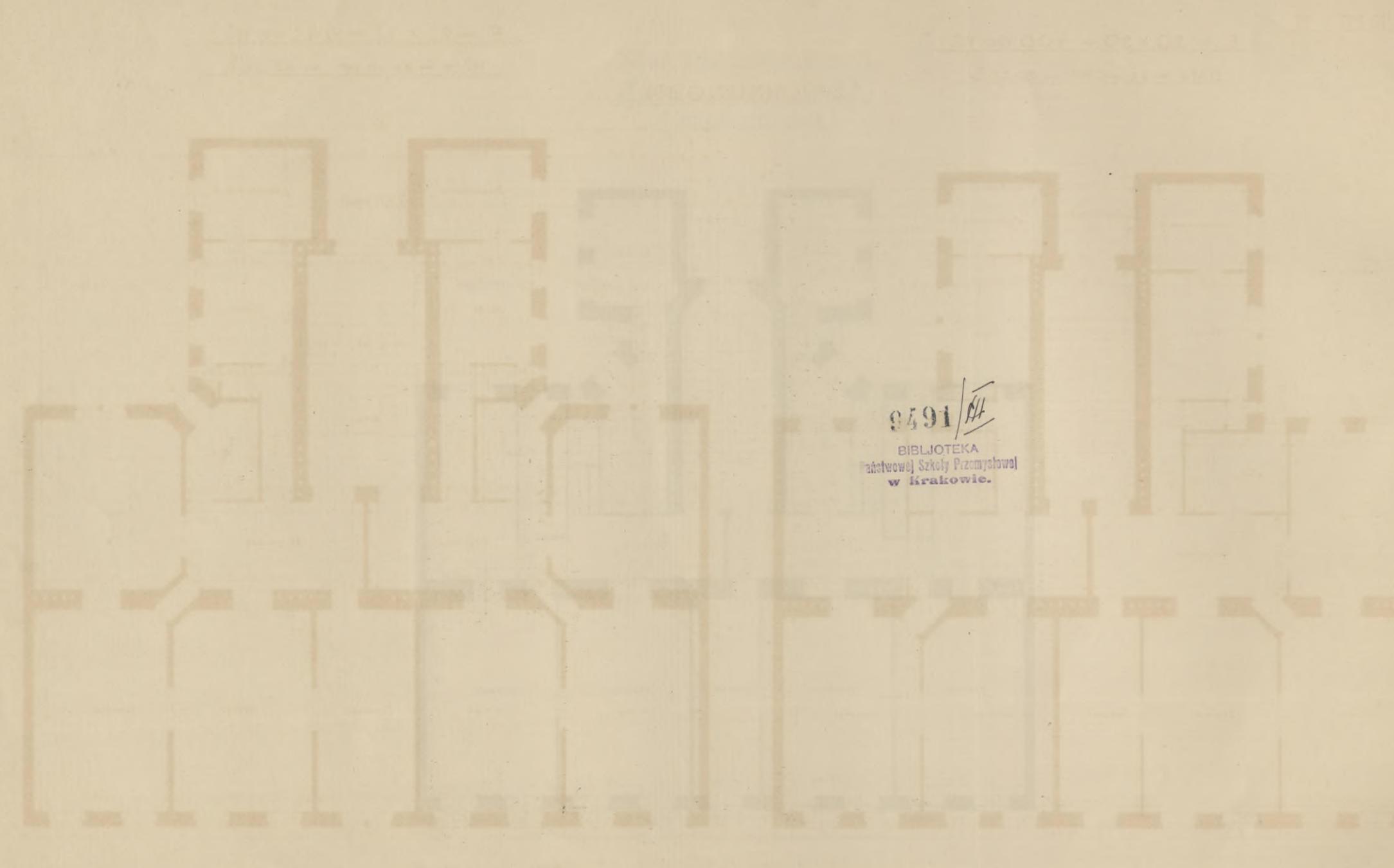
SERIE II.

$$F = 19 \times 19 = 361,00 \text{ m}^2$$

$$\text{Höfe} = 70,60 \text{ m}^2 = 19,55 \text{ ‰}$$

[2. WOHNUNGEN.]





9491/14
BIBLIOTEKA
Państwowej Szkoły Przemysłowej
w Krakowie.

SERIE II.

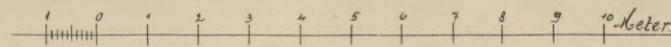
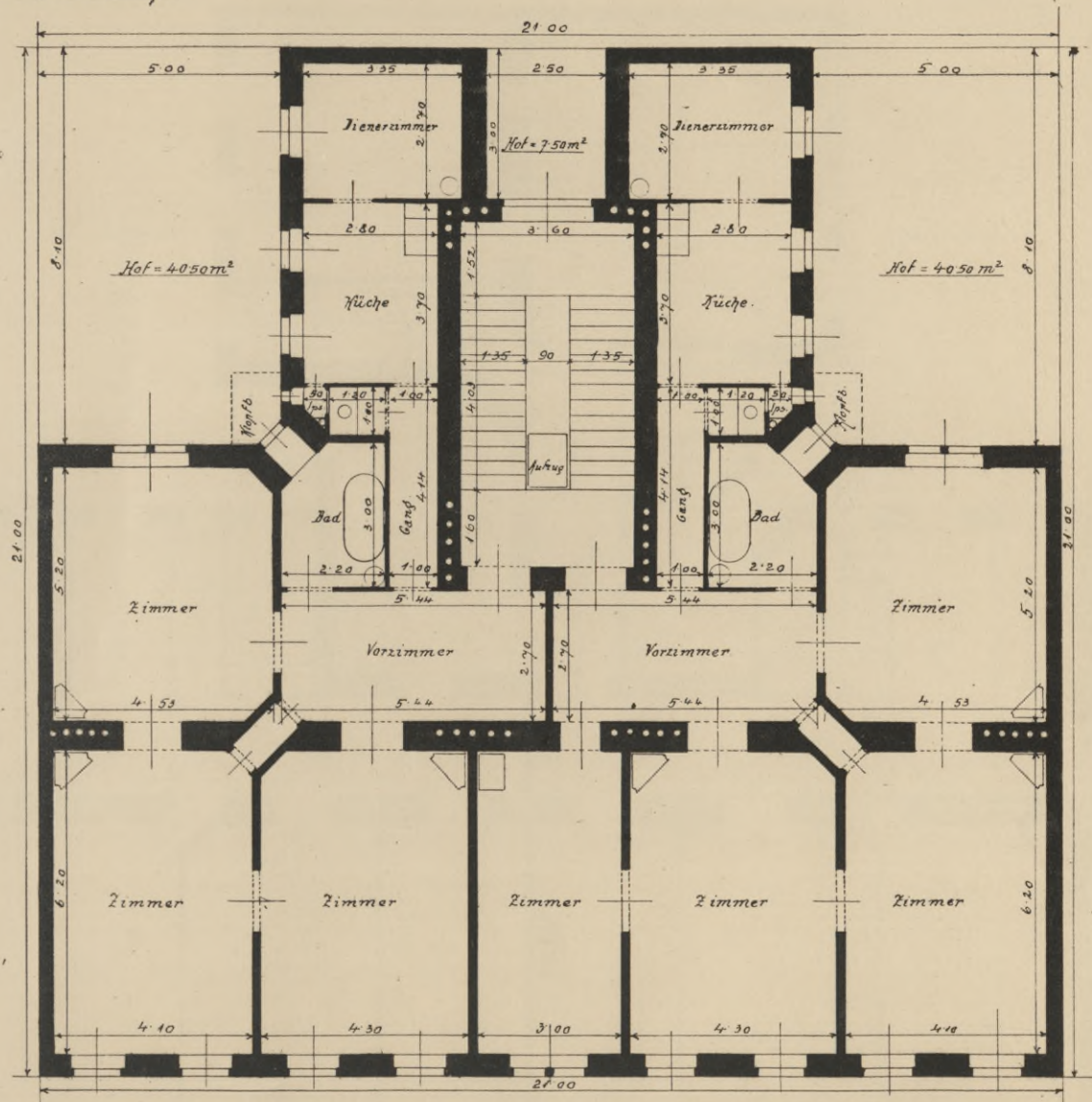
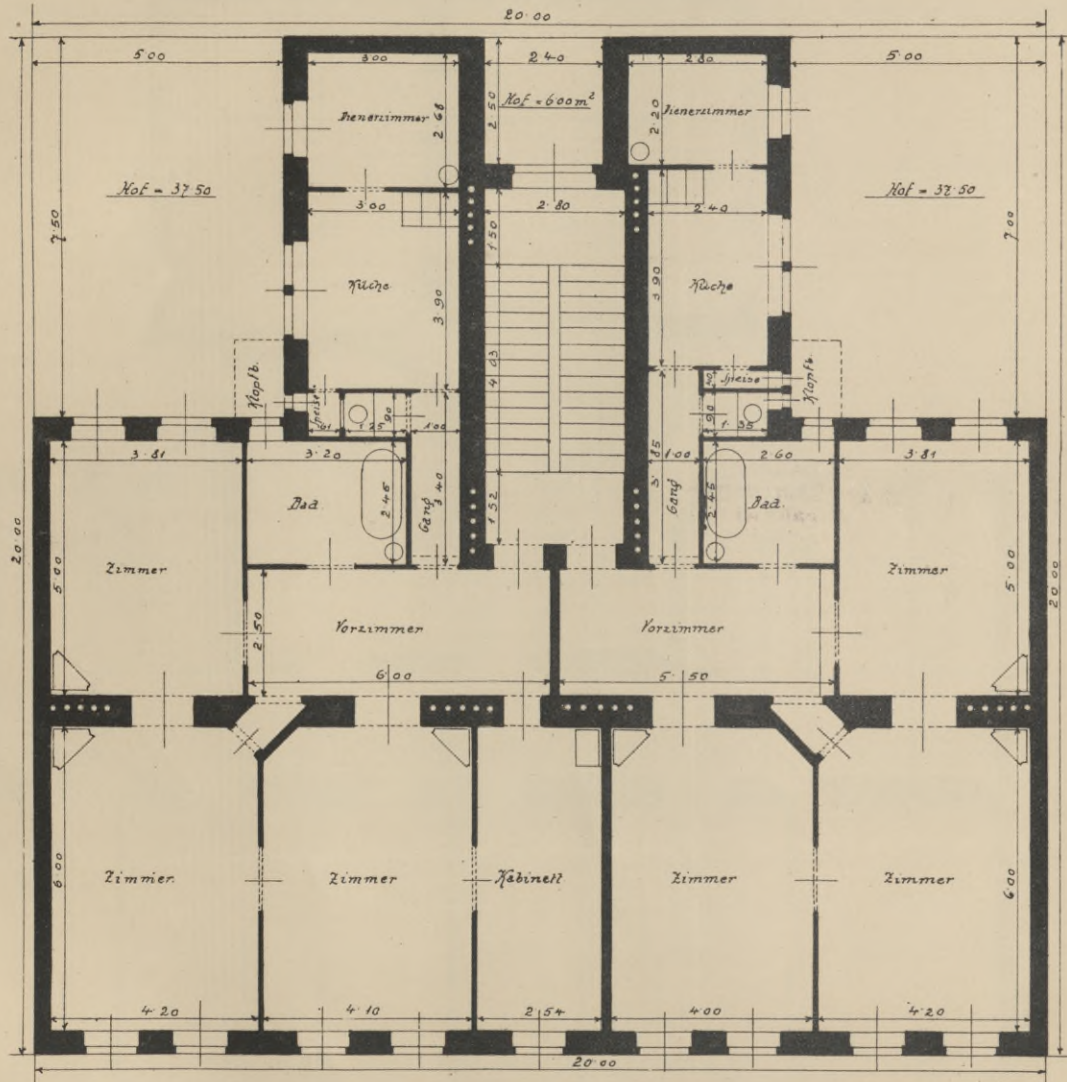
$$F = 20 \times 20 = 400.00 \text{ m}^2$$

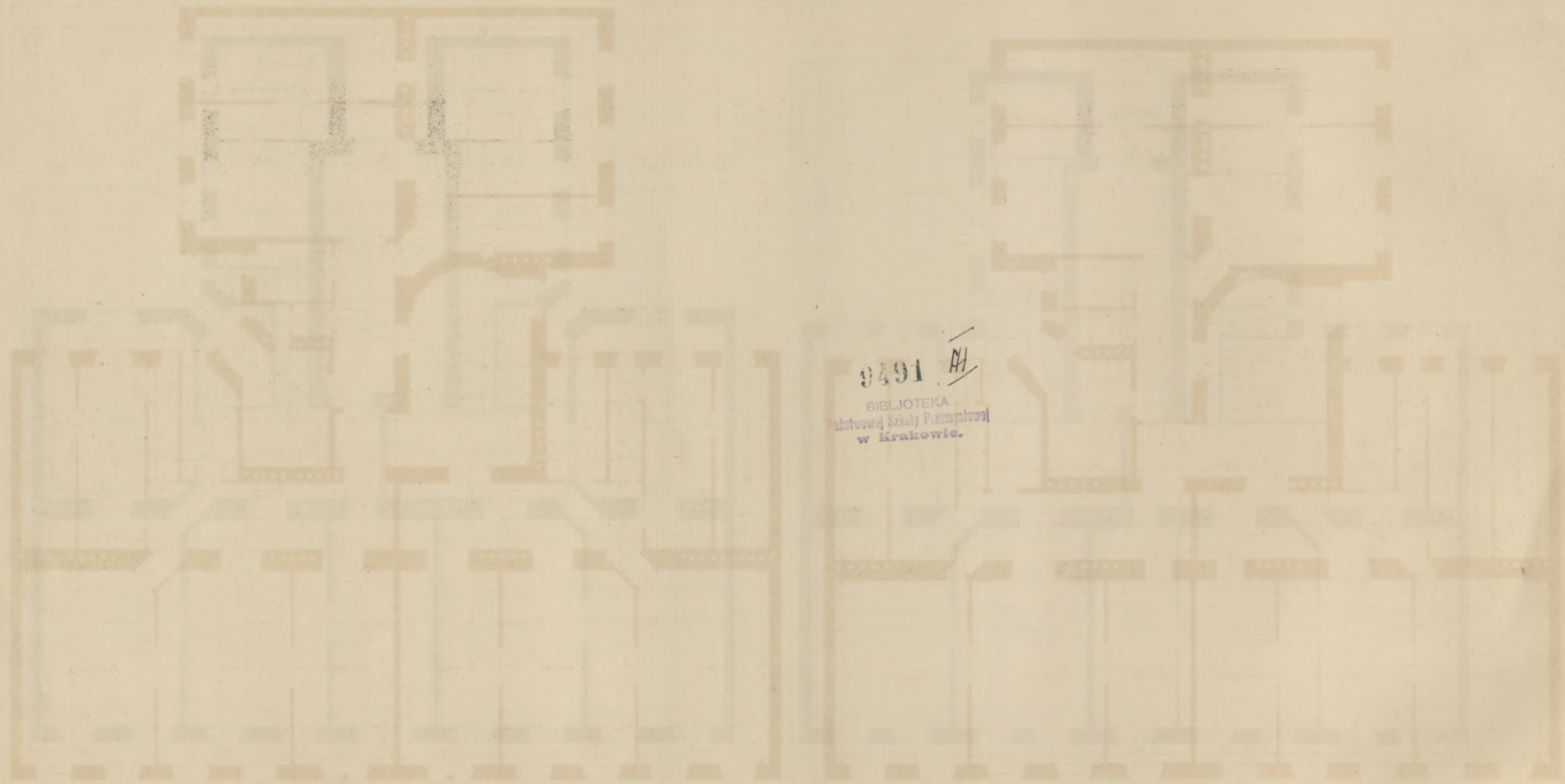
$$\text{Höfe} = 81.00 \text{ m}^2 = 20.25 \text{ p.}$$

[2 WOHNUNGEN.]

$$F = 21 \times 21 = 441.00 \text{ m}^2$$

$$\text{Höfe} = 88.50 \text{ m}^2 = 20.06 \text{ p.}$$





9491 ¹⁴
BIBLIOTEKA
Państwowej Szkoły Przemysłowej
w Krakowie.

SERIE II

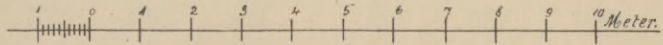
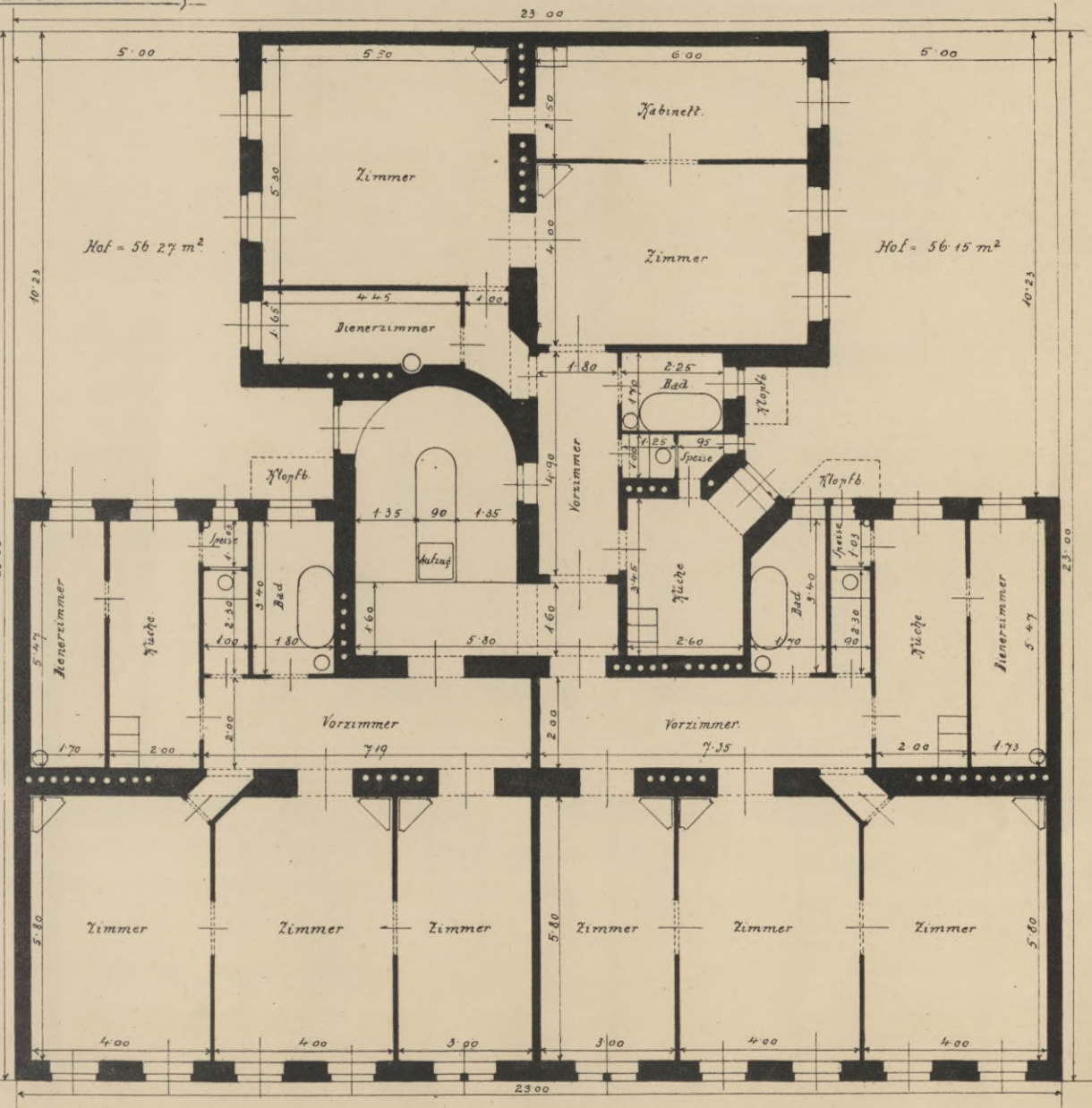
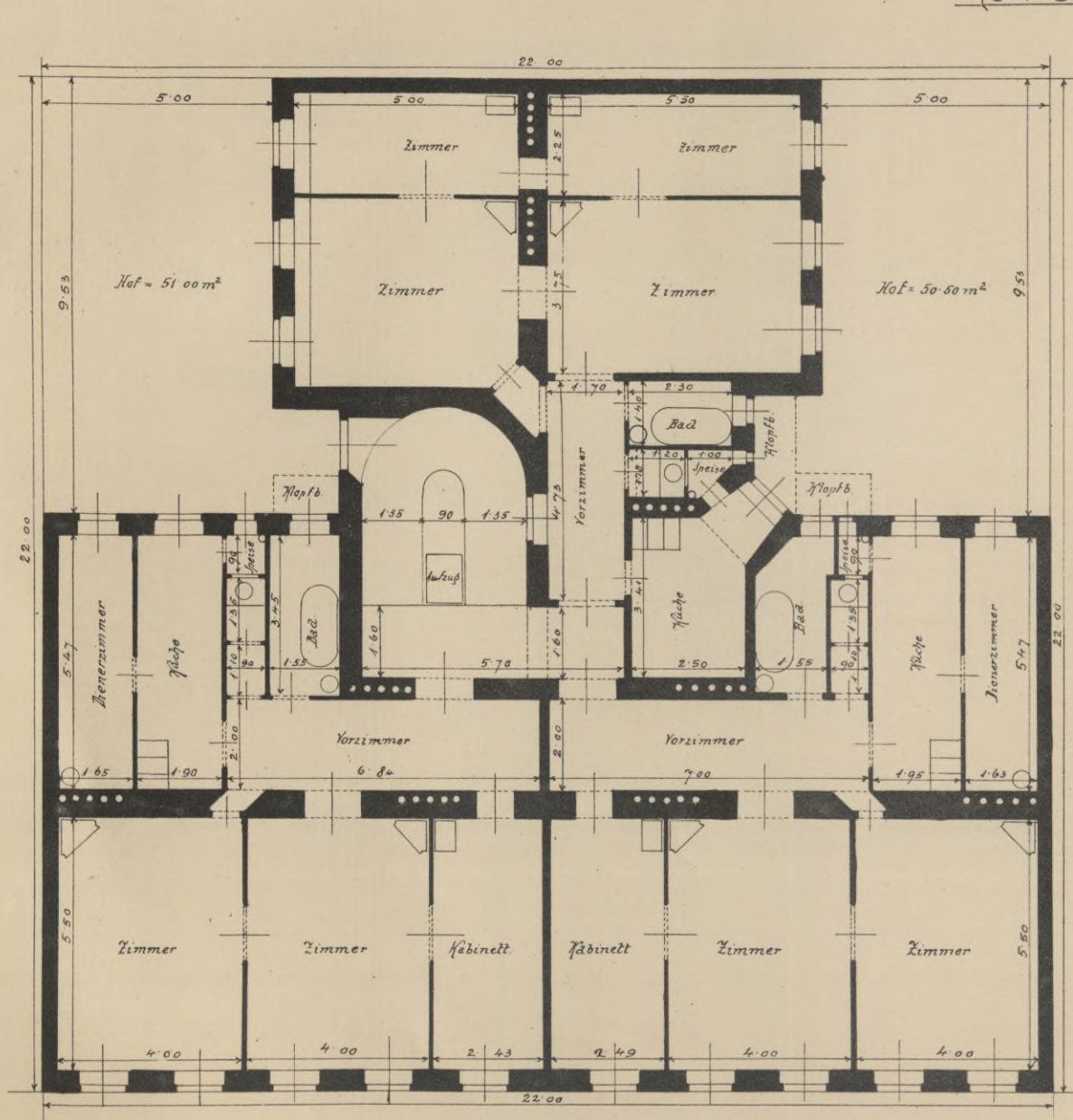
$F = 22 \times 22 = 484.00 \text{ m}^2$

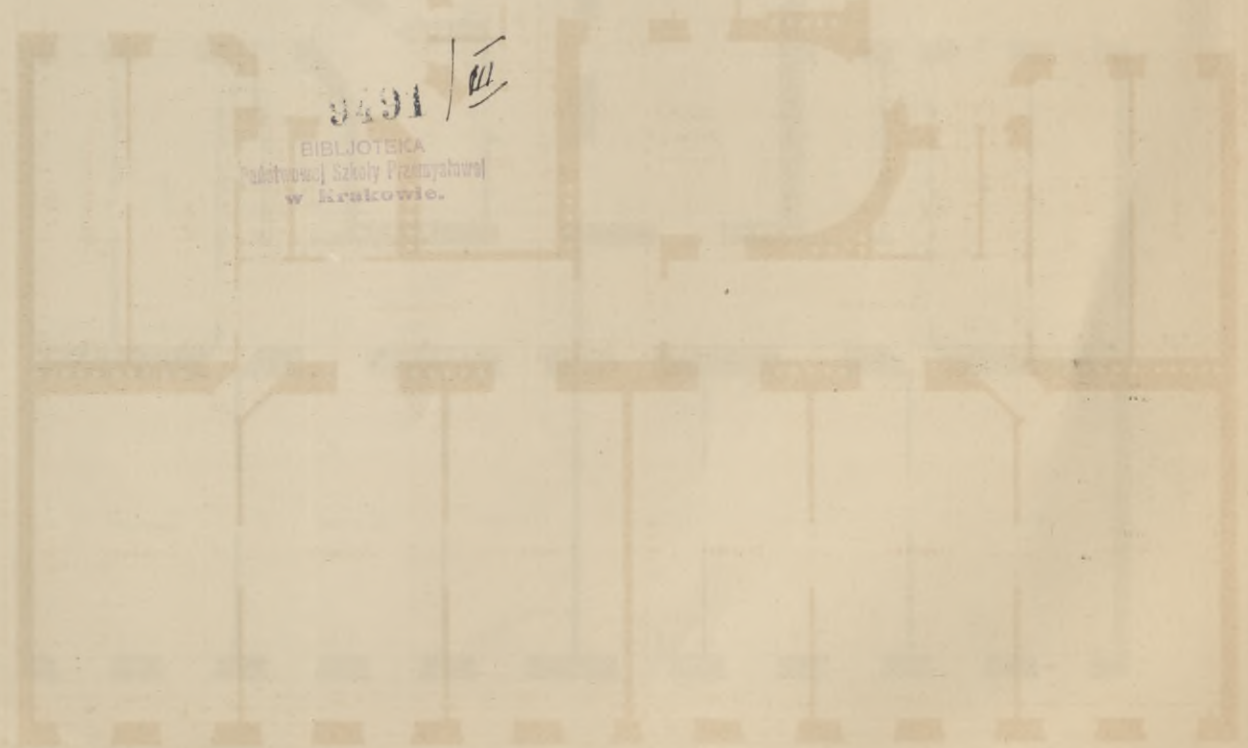
Höfe = $101.50 \text{ m}^2 = 21.05\%$

[3. WOHNUNGEN.]

$F = 23 \times 23 = 529.00 \text{ m}^2$

Höfe = $112.42 \text{ m}^2 = 21.25\%$





3491 / 11
BIBLIOTEKA
Państwowej Szkoły Przemysłowej
w Krakowie.

SERIE II.

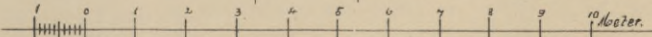
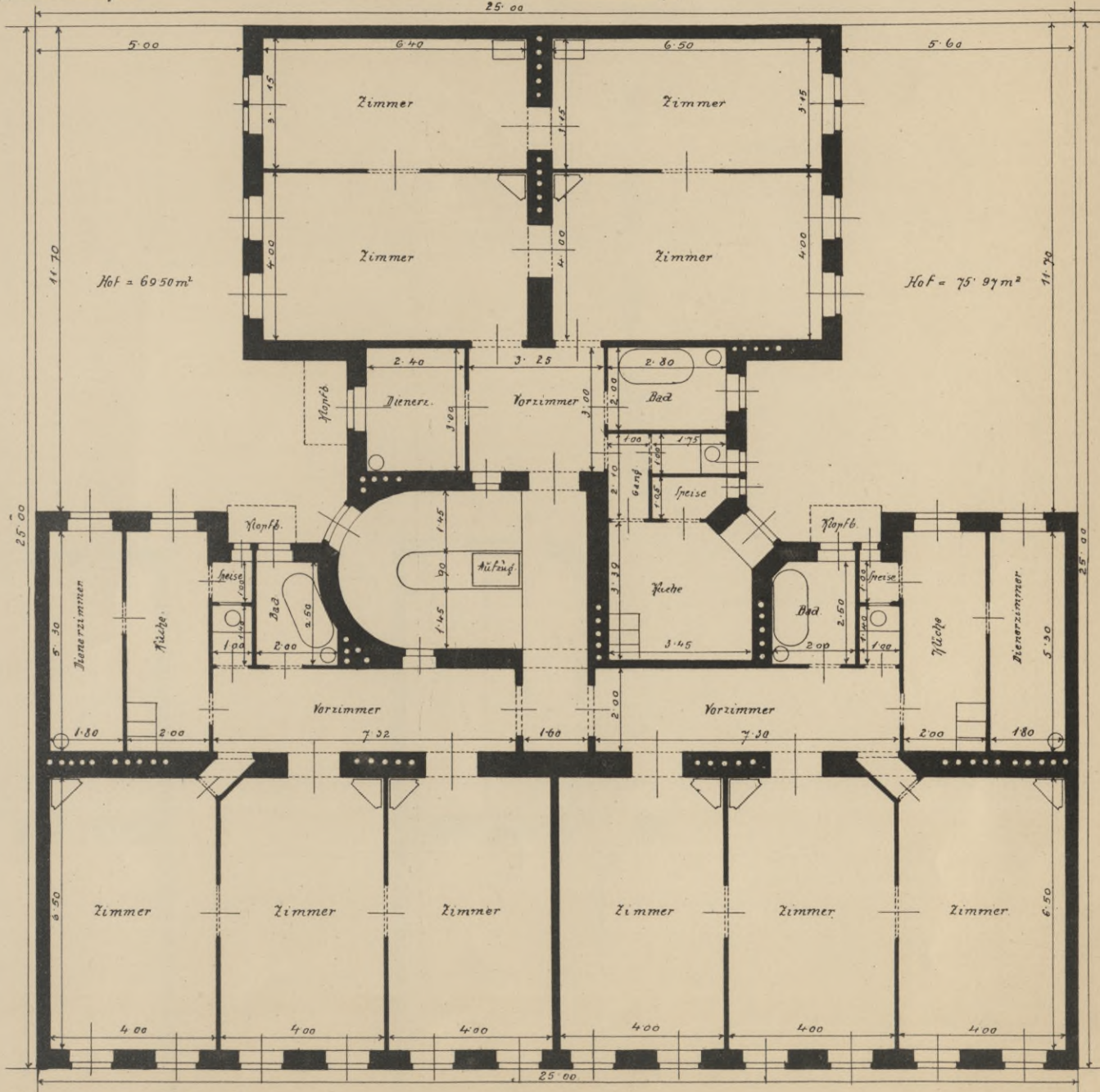
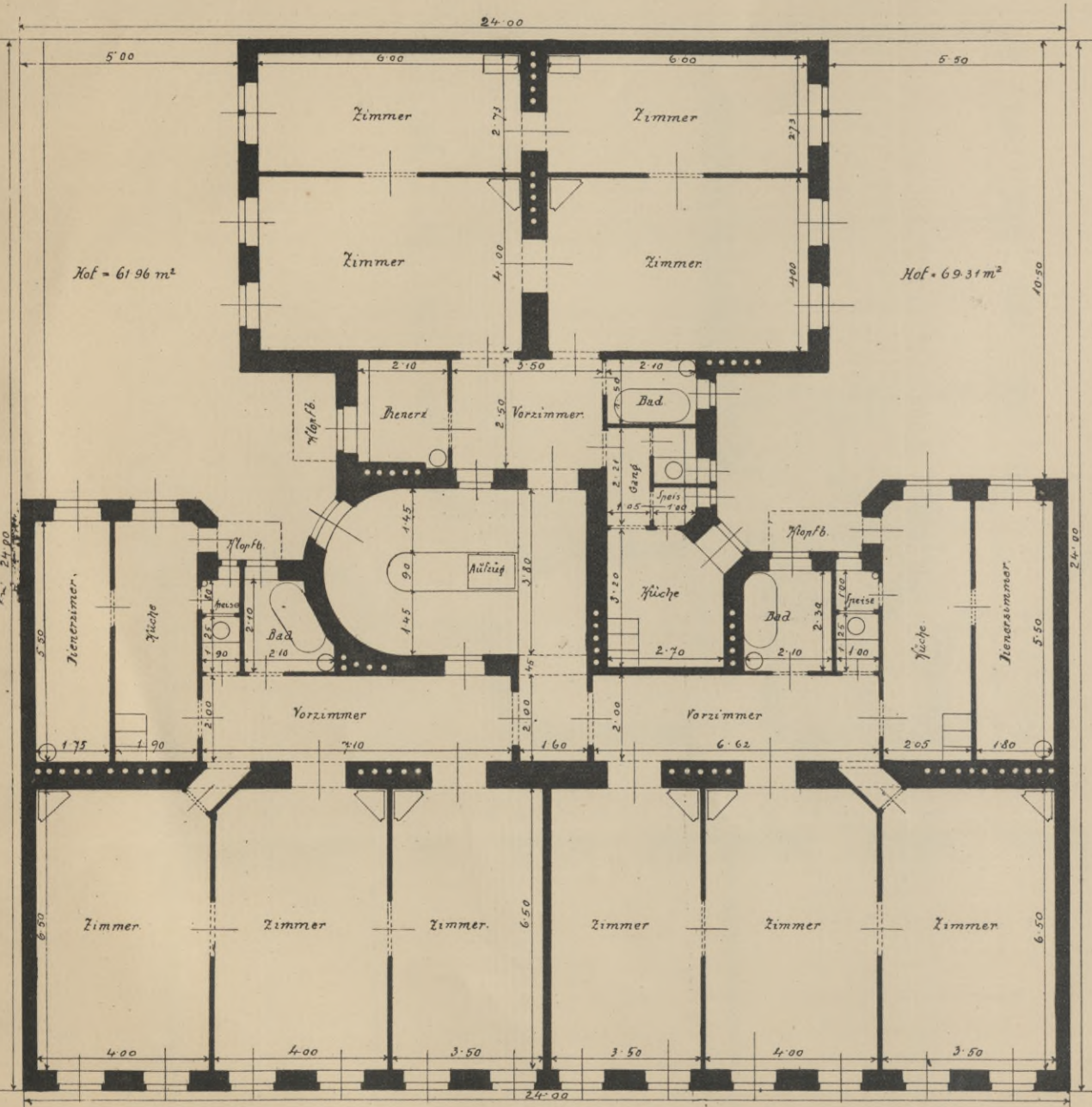
$F = 24 \times 24 = 576.00 \text{ m}^2$

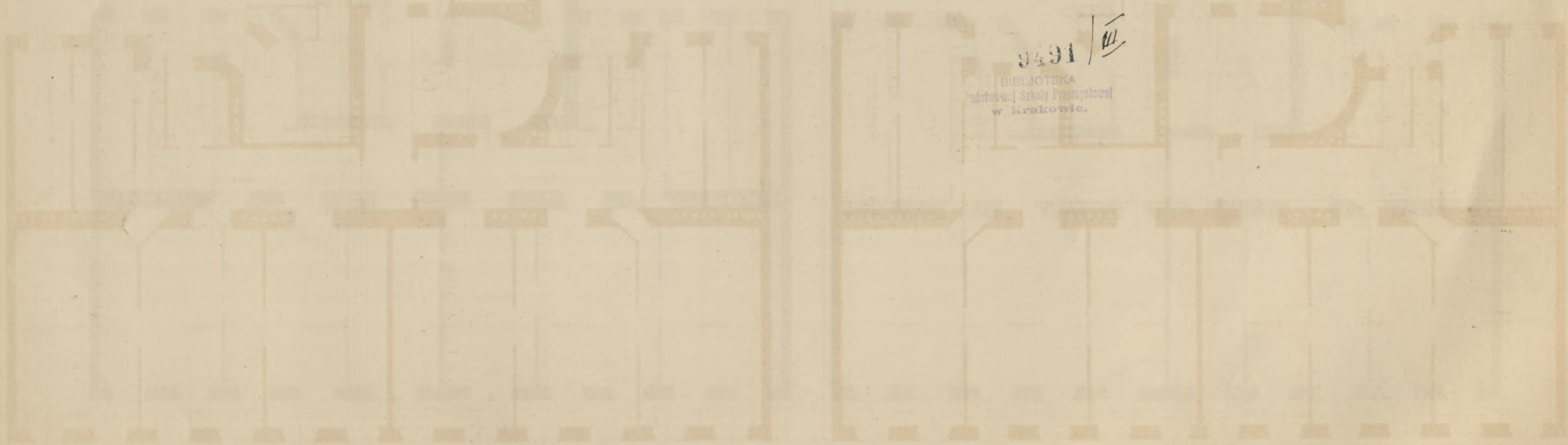
$\text{Höfe} = 131.27 \text{ m}^2 = 22.79\%$

[3. WOHNUNGEN.]

$F = 25 \times 25 = 625.00 \text{ m}^2$

$\text{Höfe} = 145.47 \text{ m}^2 = 23.27\%$



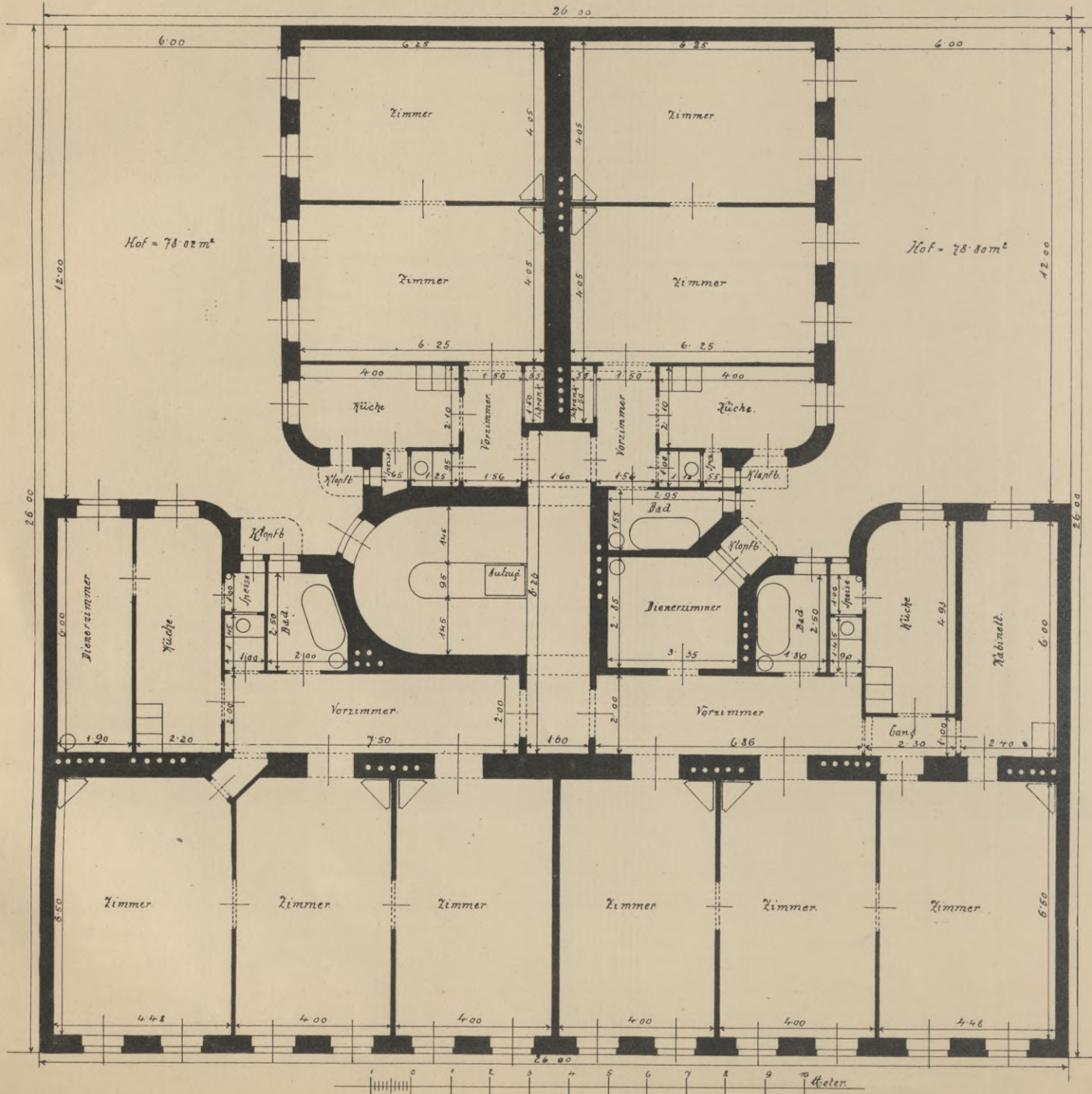


3491 / 11

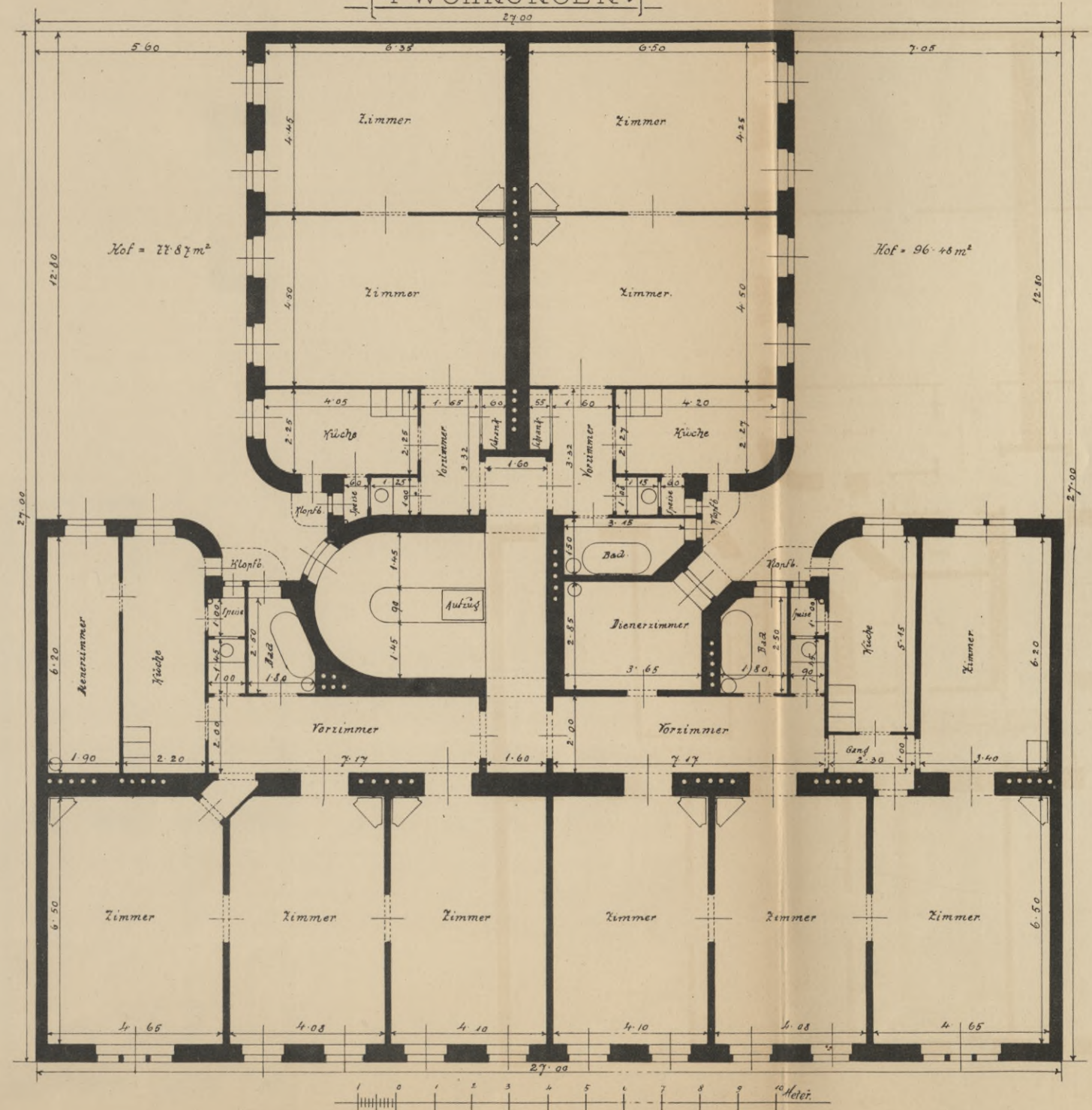
BIBLIOTEKA
edukacyjnej Szkoły Przemysłowej
w Krakowie.

SERIE II.

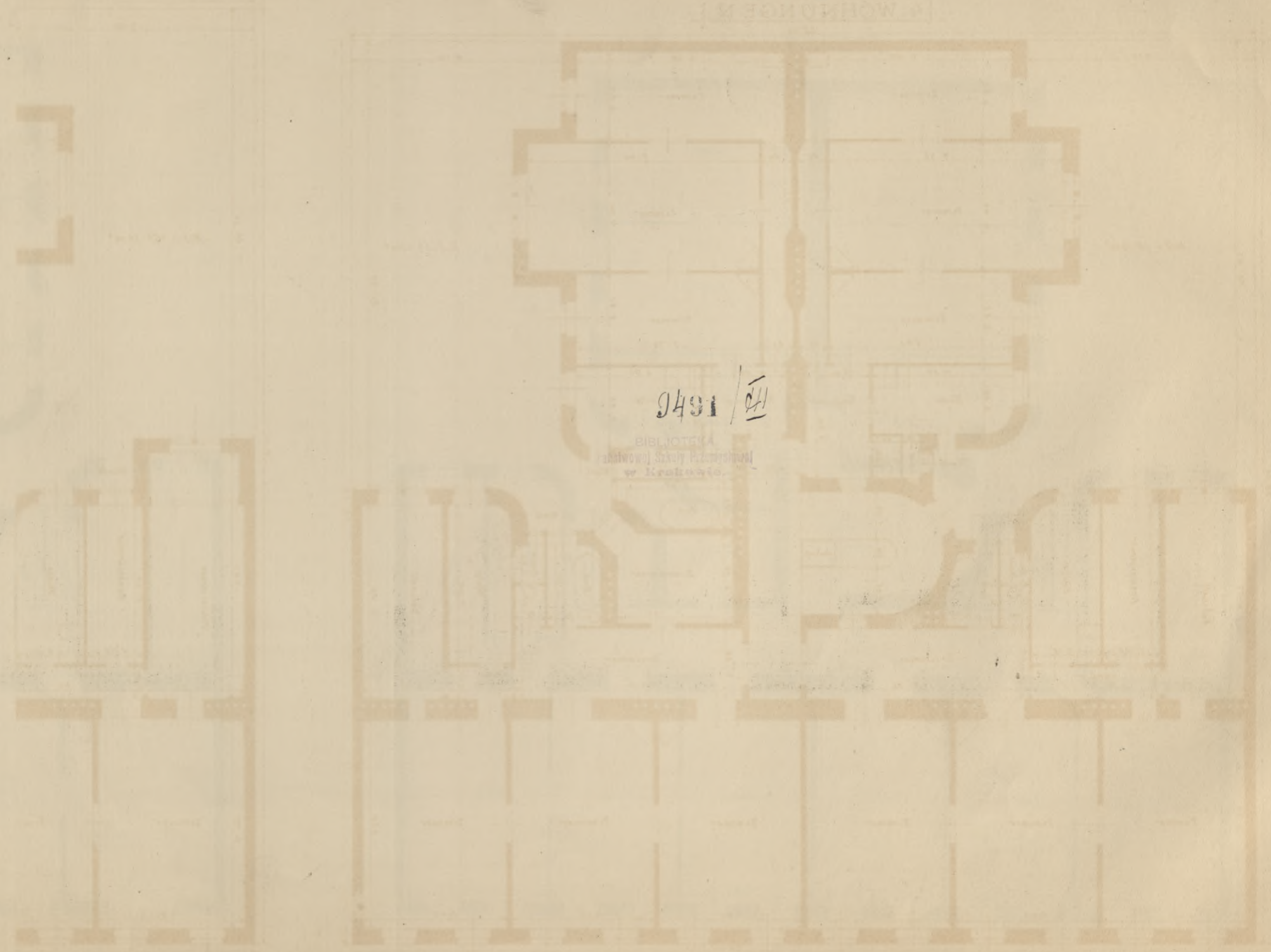
$F = 26 \times 26 = 676.00 \text{ m}^2$
 Höfe = $156.82 \text{ m}^2 = 23.49\%$
 [4 WOHNUNGEN.]



$F = 27 \times 27 = 729.00 \text{ m}^2$
 Höfe = $174.35 \text{ m}^2 = 23.91\%$
 [4 WOHNUNGEN.]



ALWINGHOFFER
- 1885 - 784 - 200
SERIE II

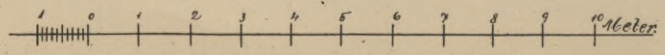
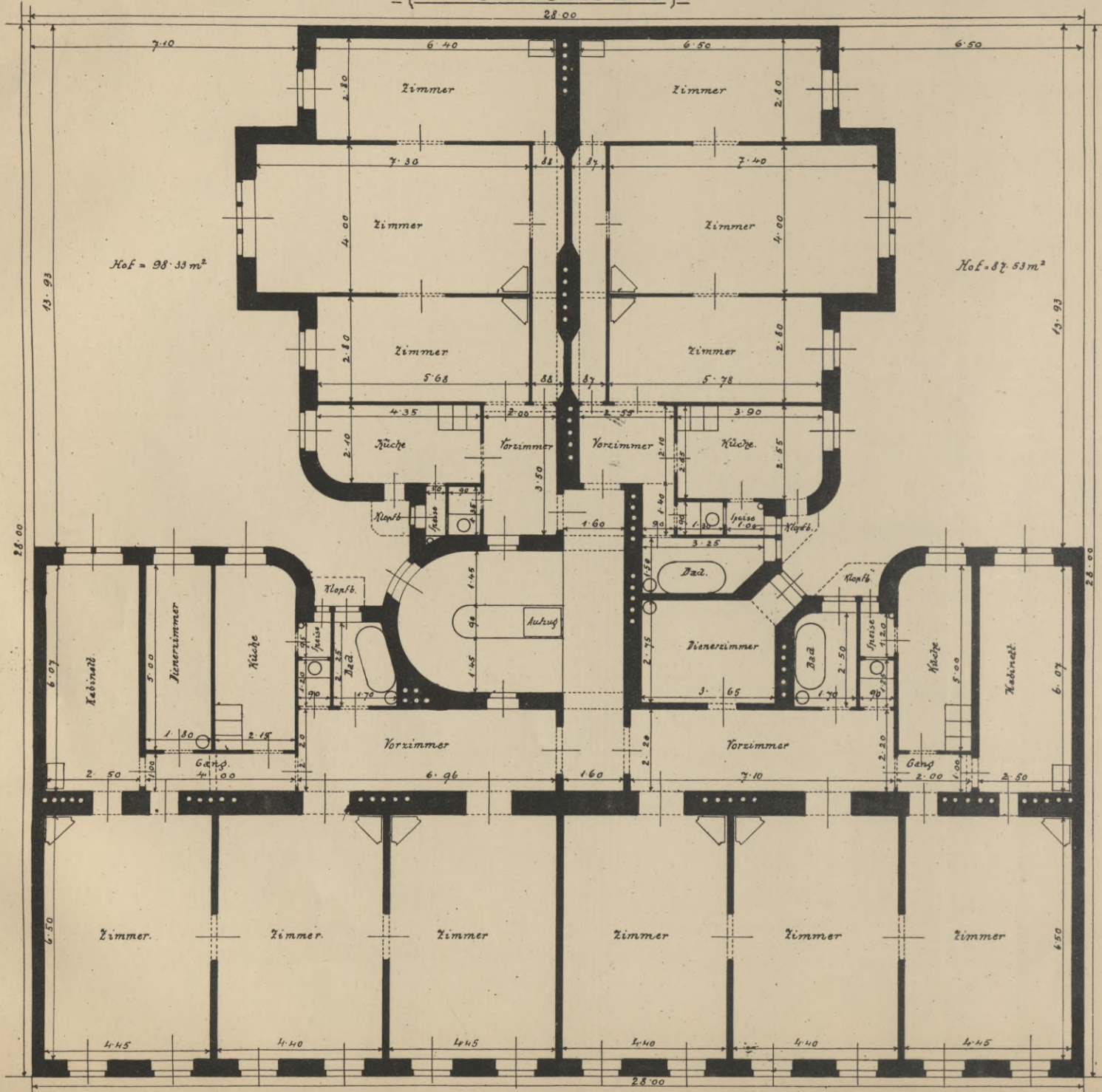


9491 / 211

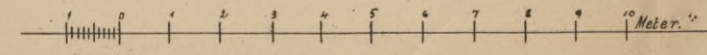
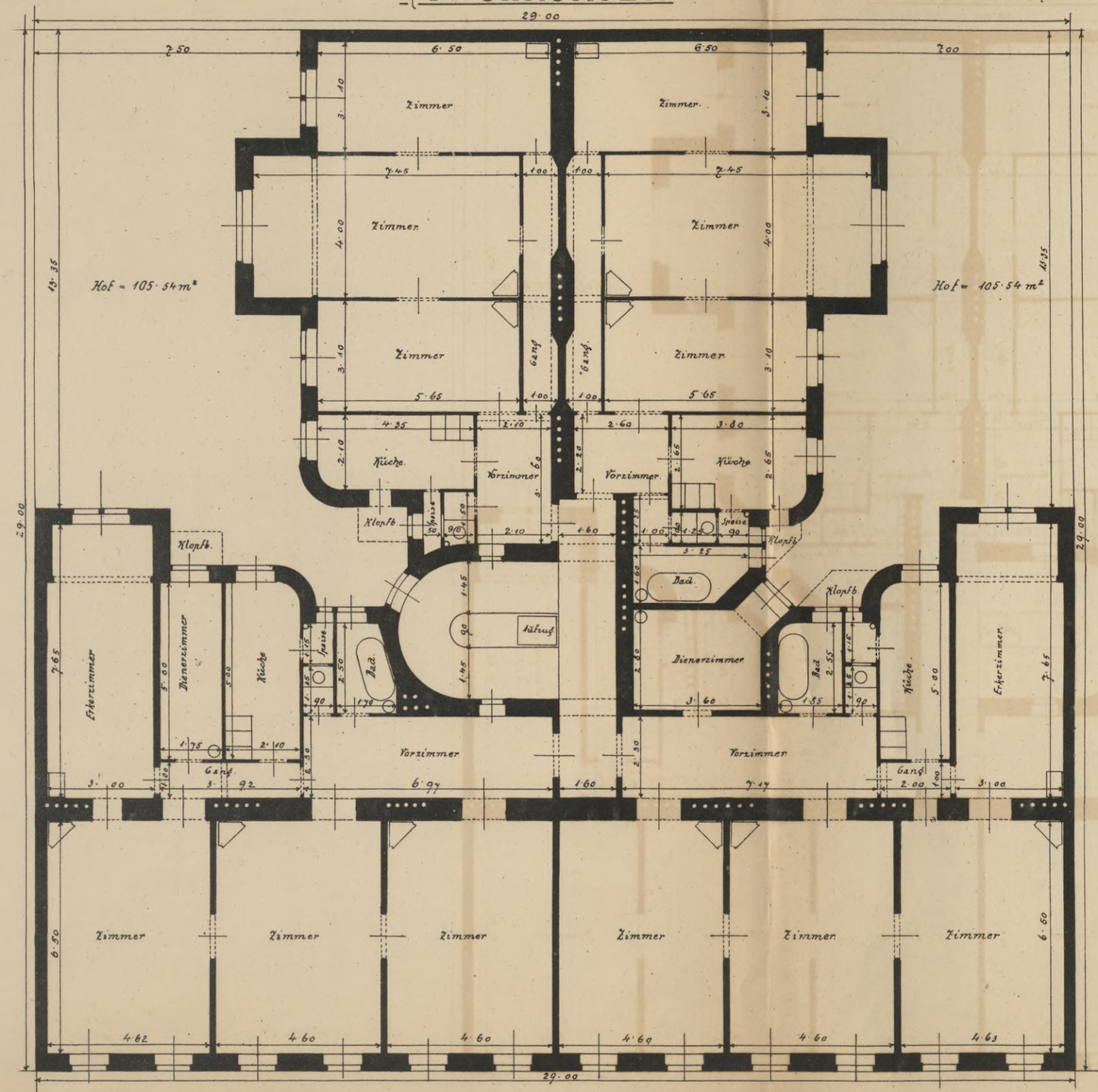
BIBLIOTEKA
Państwowej Szkoły Przemysłowej
w Krakowie.

SERIE II.

$F = 28 \times 28 = 784.00 \text{ m}^2$
Höfe = $185.86 \text{ m}^2 = 23.70\%$
[4. WOHNUNGEN.]



$F = 29 \times 29 = 841.00 \text{ m}^2$
Höfe = $200.61 \text{ m}^2 = 23.85\%$
[4. WOHNUNGEN.]



BIBLIOTEKA
Państwowej Szkoły Przemysłowej
w Krakowie.

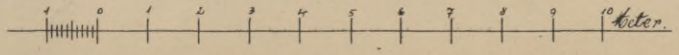
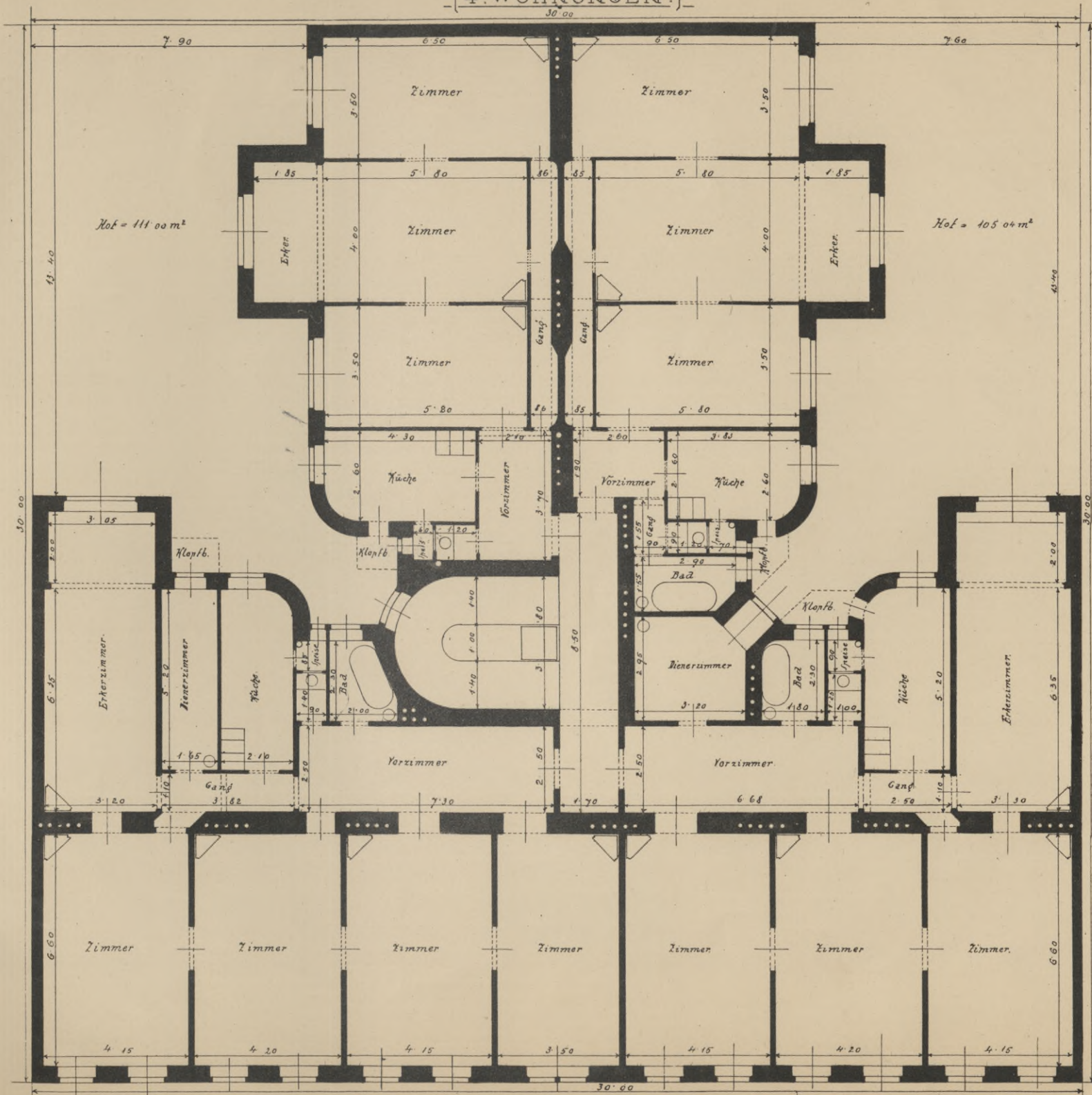
0491/071

BIBLIOTEKA
Państwowej Szkoły Przemysłowej
w Krakowie.

$F = 30 \times 30 = 900.00 \text{ m}^2$

Höfe - $218.04 \text{ m}^2 = 24.22\%$

[4. WOHNUNGEN.]



50y

POLITECHNIKA KRAKOWSKA
BIBLIOTEKA GŁÓWNA
~~IV 23650~~
L. Inw.
Kdn. 524. 13. IX. 54

9491 / 104
BIBLIOTEKA
Państwowej Szkoły Przemysłowej
w Krakowie.

Biblioteka Politechniki Krakowskiej

100000304094

S. 01

9.01

Biblioteka Politechniki Krakowskiej



IV-300988

Biblioteka Politechniki Krakowskiej



10000304094