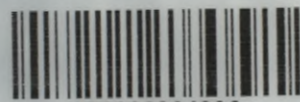


Biblioteka Politechniki Krakowskiej



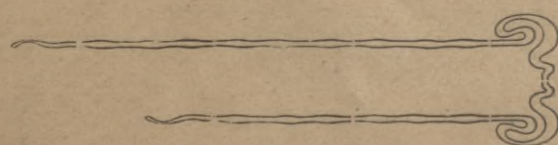
10000304096

SCHEMATISCHE GRUNDRISS-SERIEN

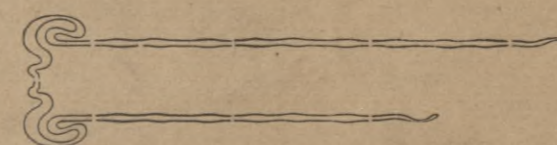
ALS TECHNISCHE GRUNDLAGE FÜR DIE VERFASSUNG VON MODERNEN
ANFORDERUNGEN DER HYGIENE ENTSPRECHENDEN
BAUORDNUNGEN.

VERFASST VON A. LOTZ, ARCHITEKT IN WIEN.

9491/
tr.



SERIE I.



BIBLIOTEKA
C. K. państw. szkoły przemysłowej
w KRAKOWIE.

WIEN 1911.

SELBSTVERLAG DES VERFASSERS.

NACHDRUCK VORBEHALTEN.

Biblioteka Politechniki Krakowskiej



100000304096



~~IV. 28. 650~~

IV-300987

049P1A

BIBLIOTEKA
Państwowej Szkoły Przemysłowej
w Krakowie.

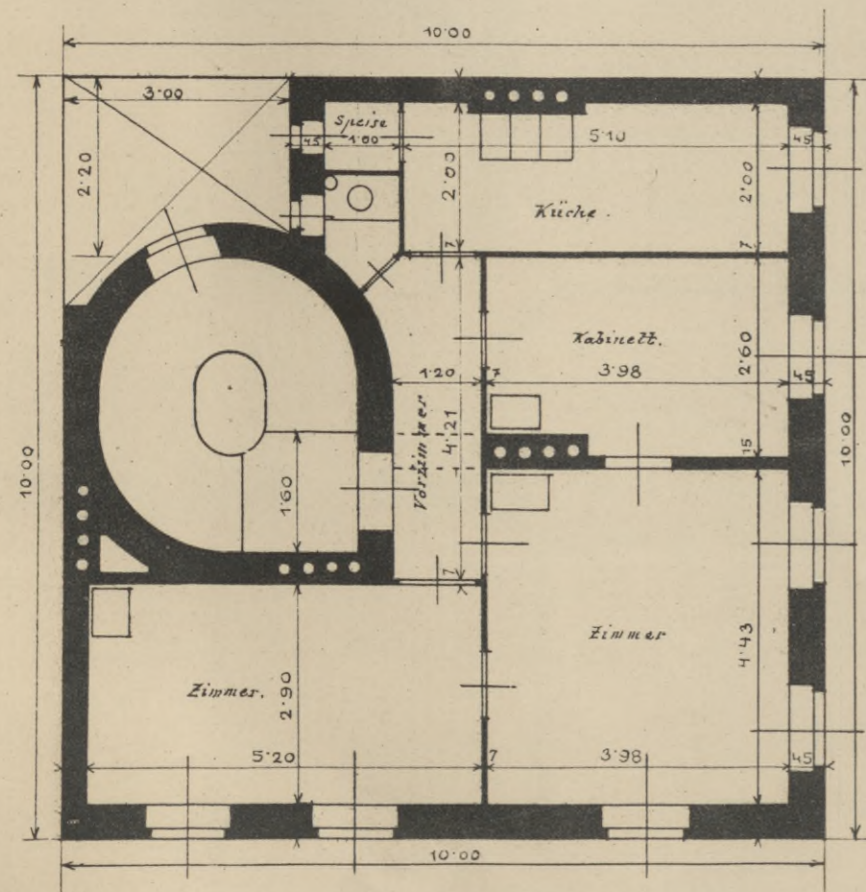
Akc. Nr. D 3979 53

BPM-B-576/2017

SERIE 1.

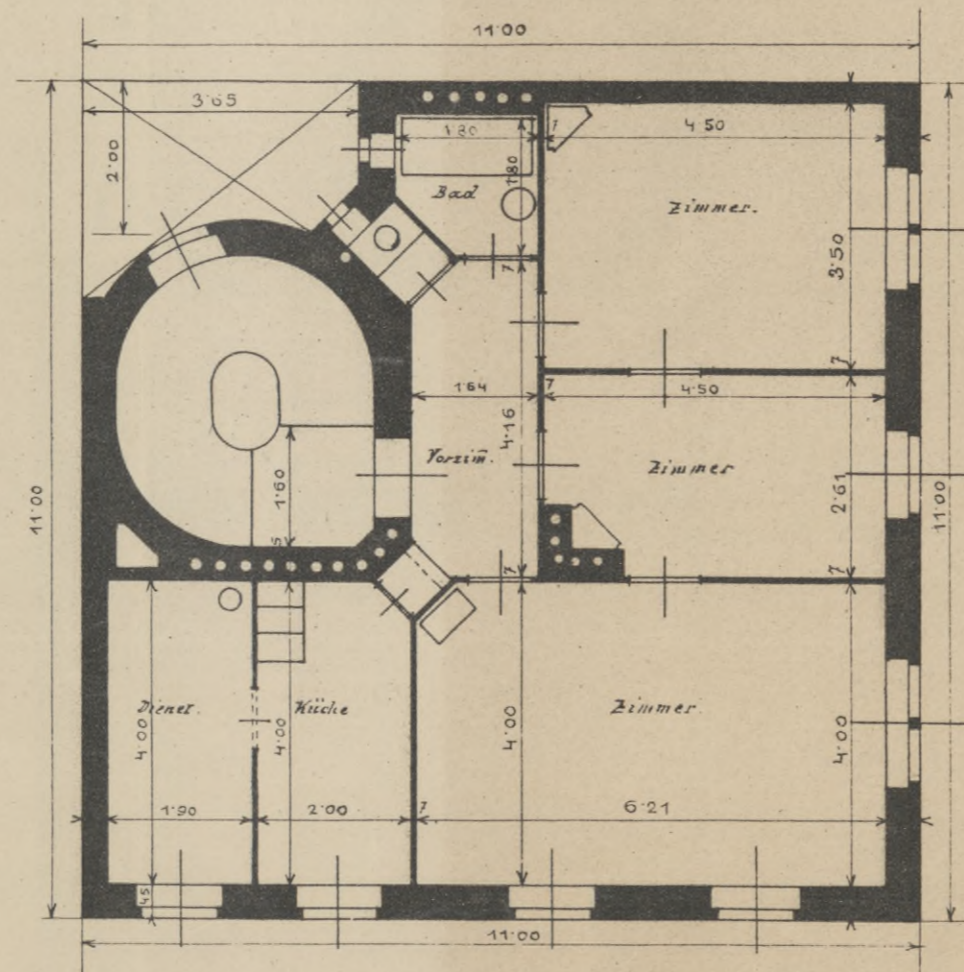
BAUGRUND = 10 × 10 = 100 m².

HOF = 6.60 m² = 6.60 ‰.



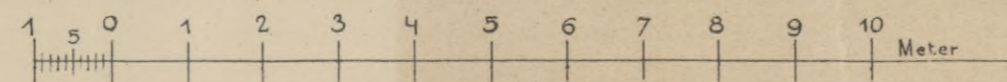
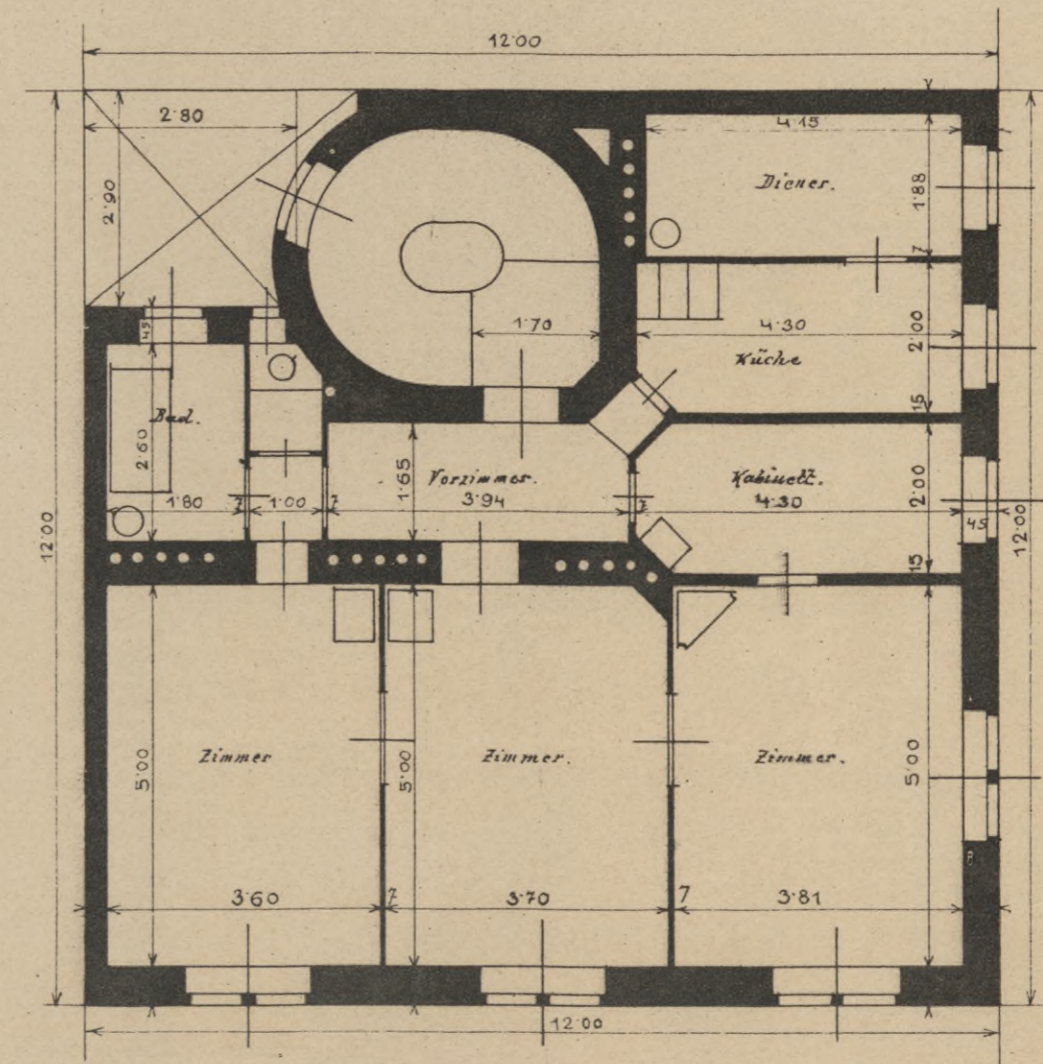
BAUGRUND = 11 × 11 = 121 m².

HOF = 7.30 m² = 6.00 ‰.



BAUGRUND = 12 × 12 = 144 m².

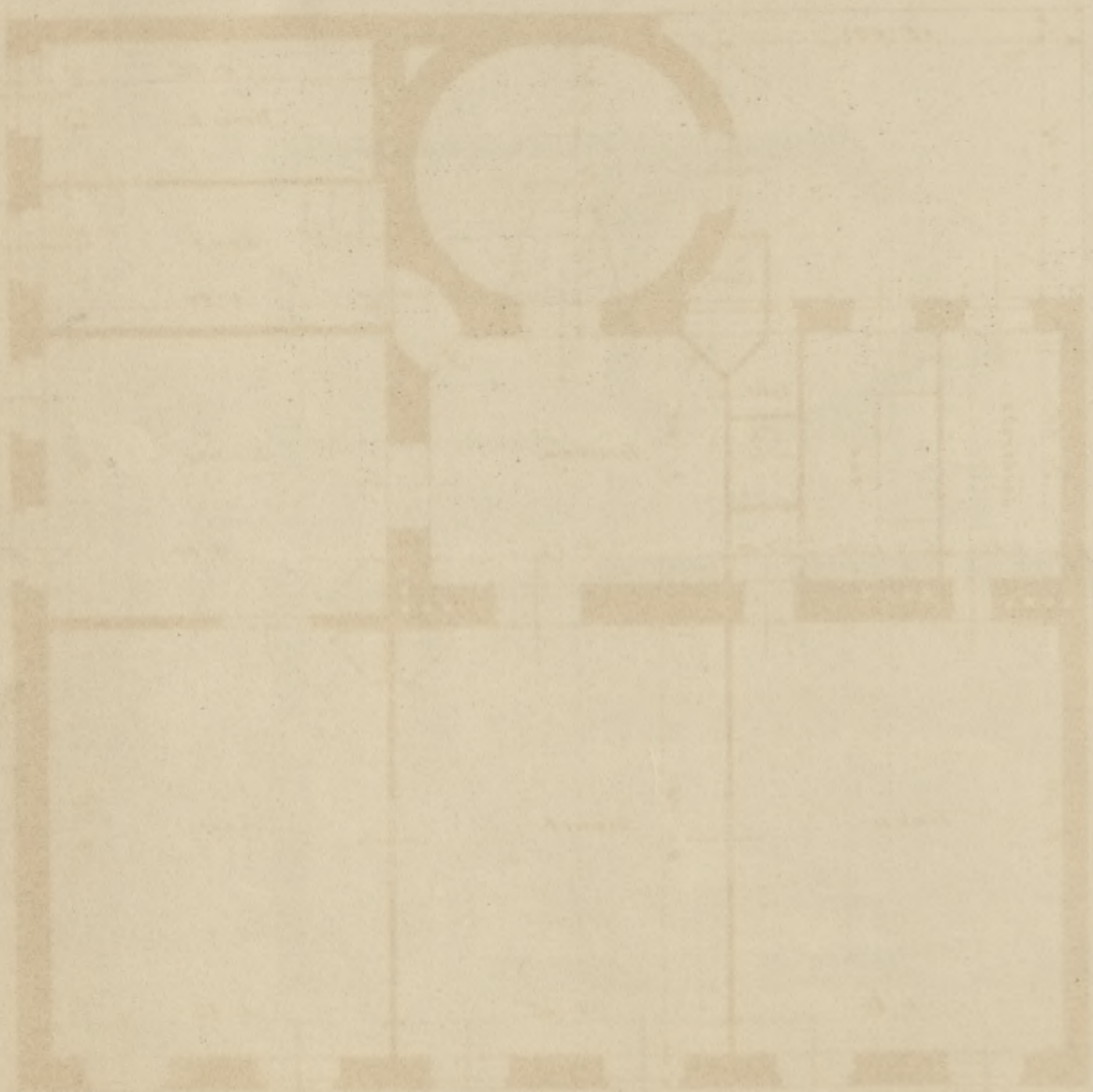
HOF = 8.00 m² = 5.55 ‰.





9491
BIBLIOTEKA
Państwowej Szkoły Przemysłowej
w Krakowie.

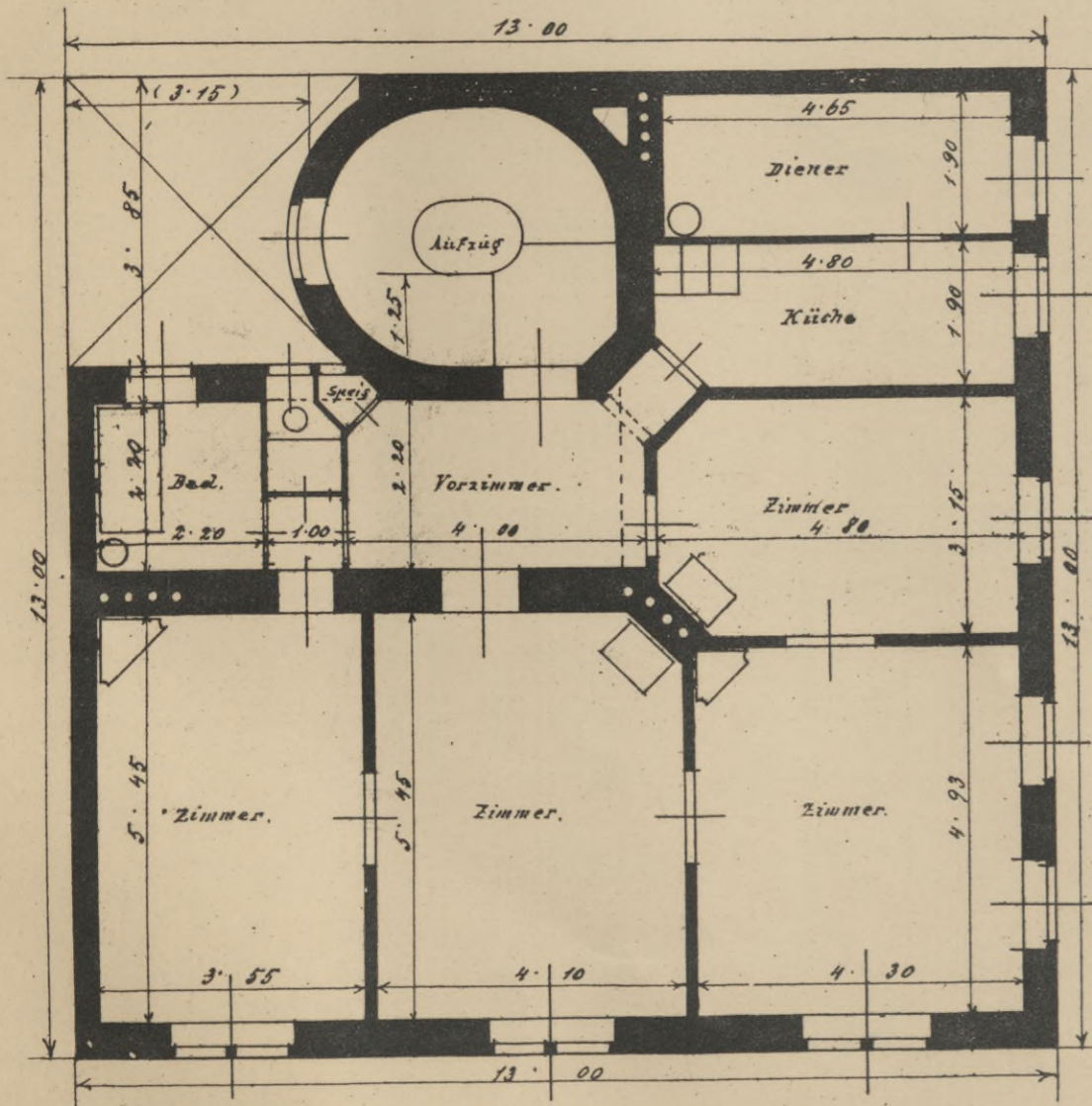
9491 *th*



SERIE 1.

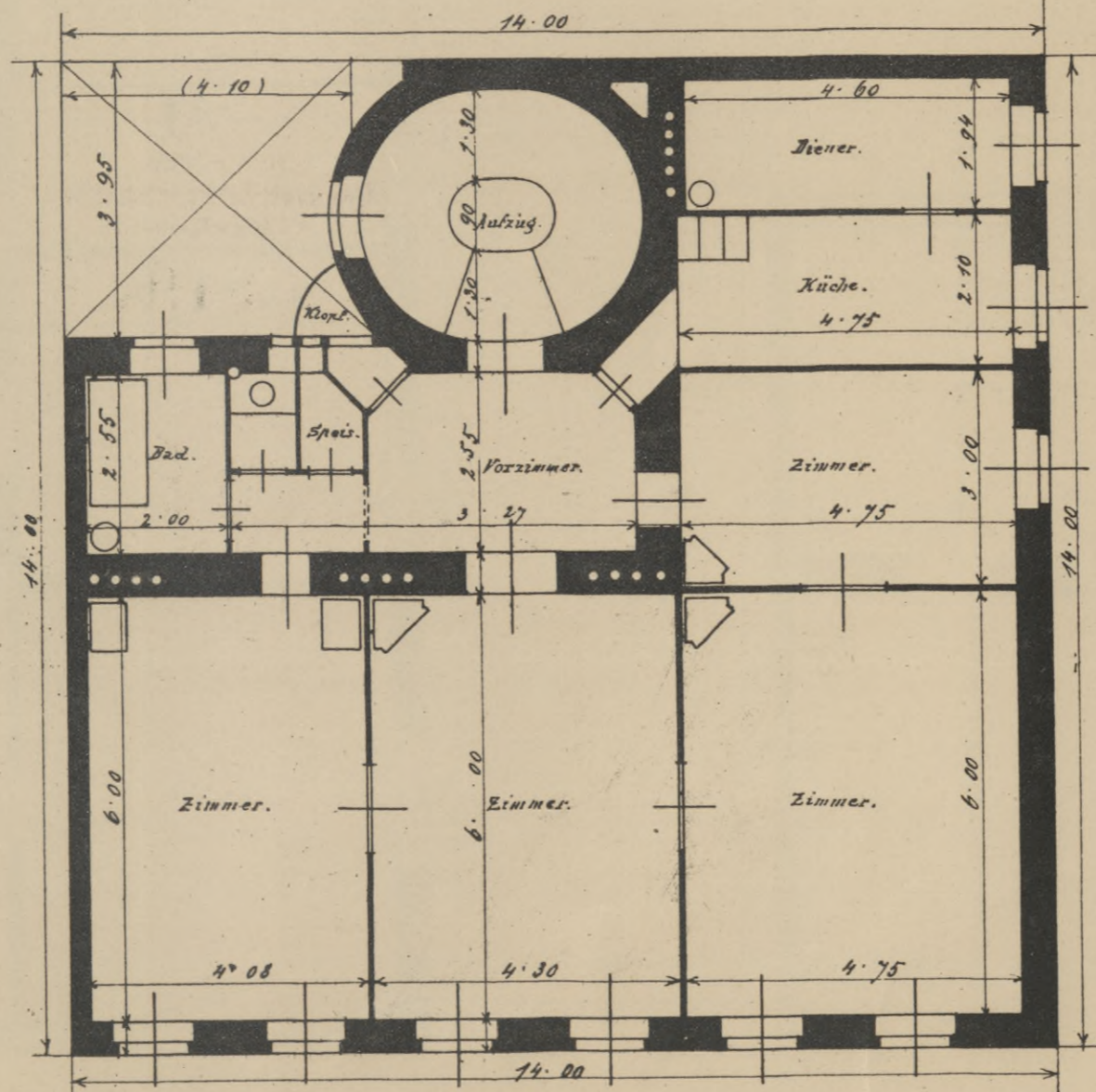
$$F. = 13 \times 13 = 169.00 \text{ m}^2$$

$$\text{HOF} = 12.12 \text{ m}^2 = 7.17\%$$



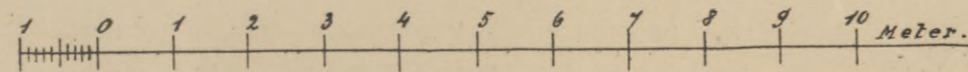
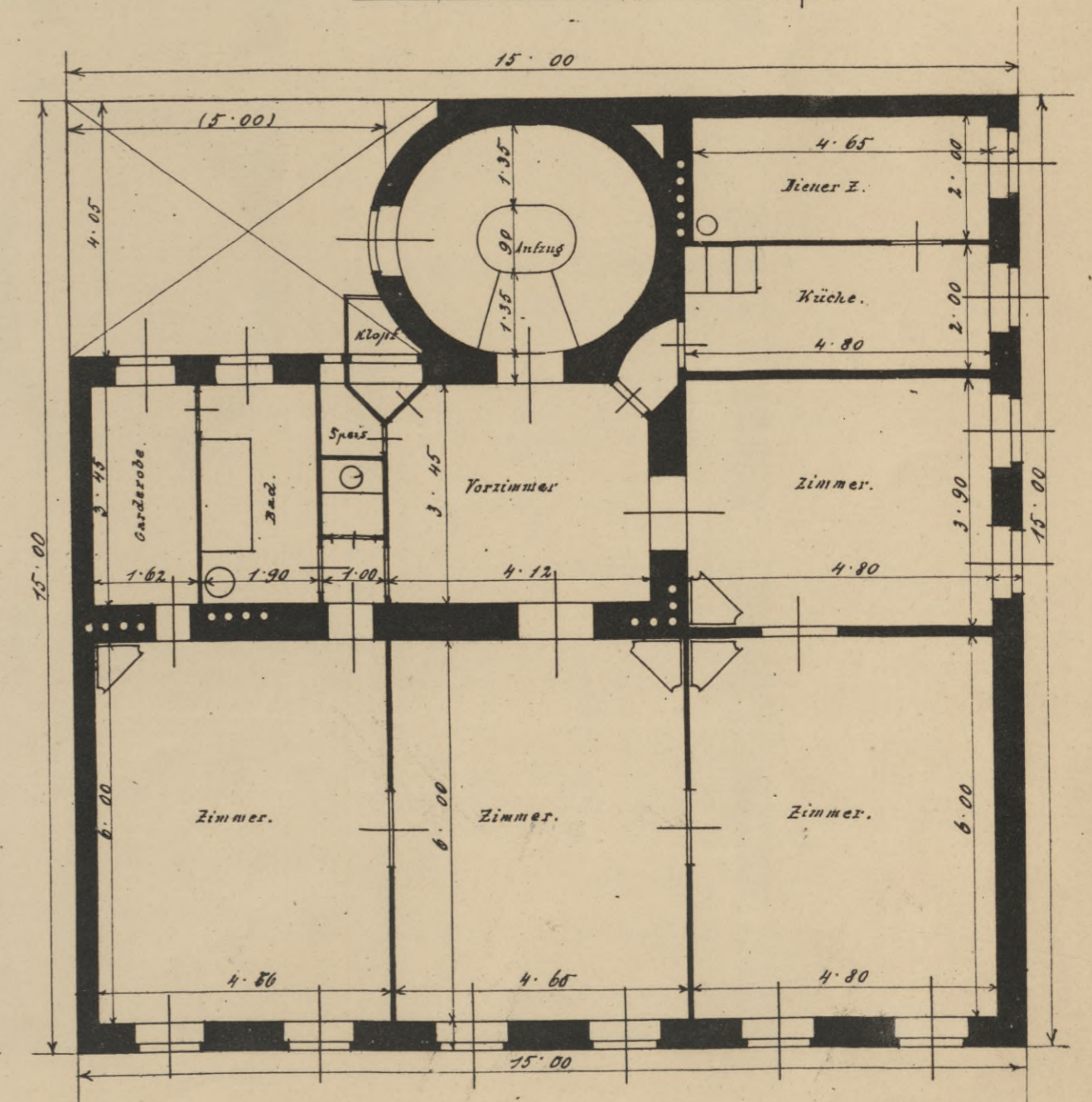
$$F. = 14 \times 14 = 196.00 \text{ m}^2$$

$$\text{HOF} = 16.20 \text{ m}^2 = 8.20\%$$



$$F. = 15 \times 15 = 225.00 \text{ m}^2$$

$$\text{HOF} = 20.25 \text{ m}^2 = 9.00\%$$





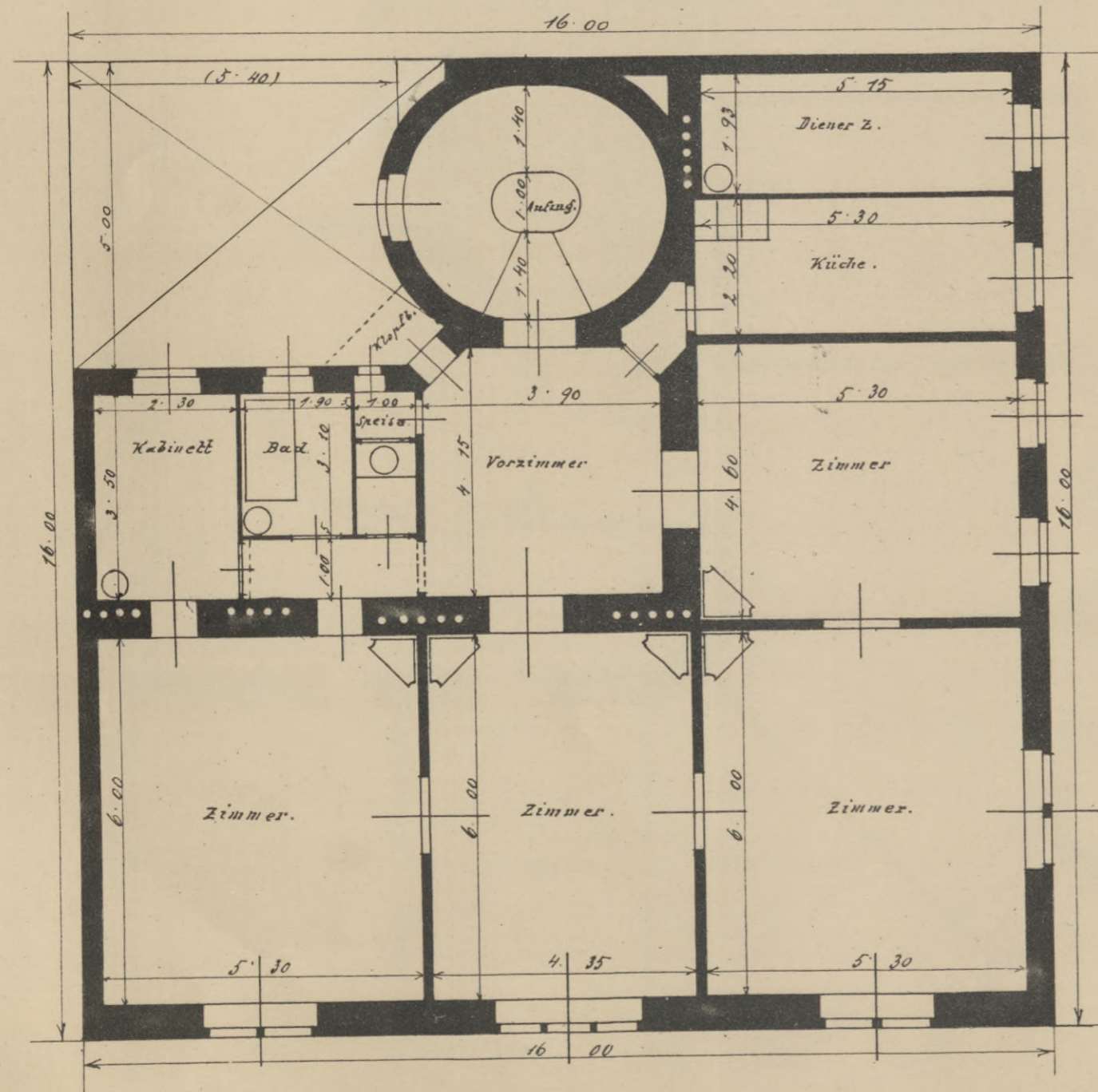
491
BIBLIOTEKA
Państwowej Szkoły Przemysłowej
w Krakowie.

491/4

SERIE 1.

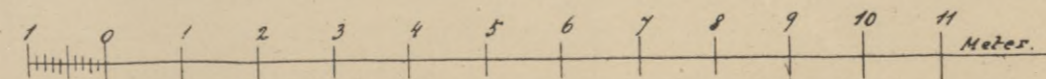
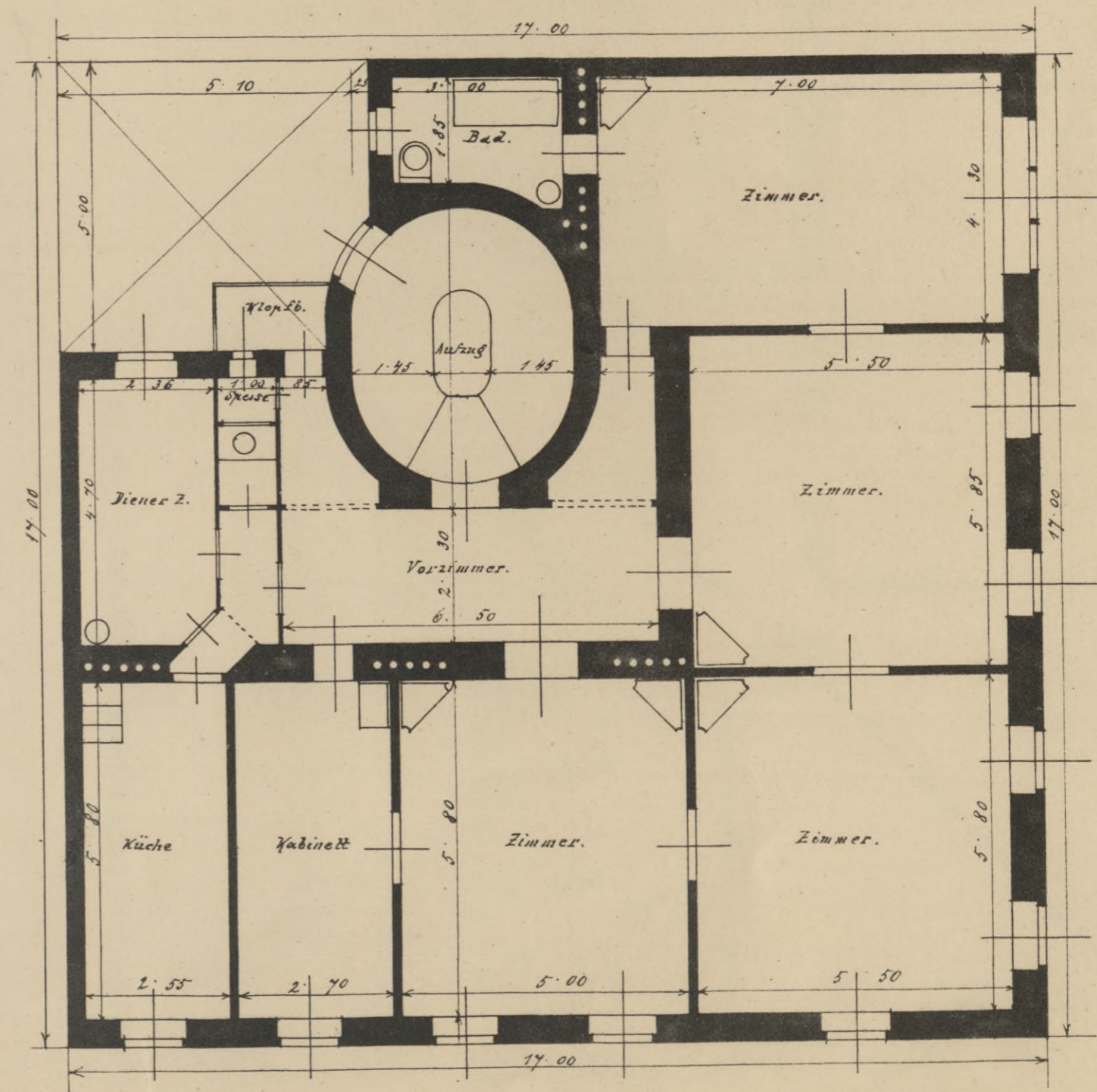
$$F = 16 \times 16 = 256.00 \text{ m}^2$$

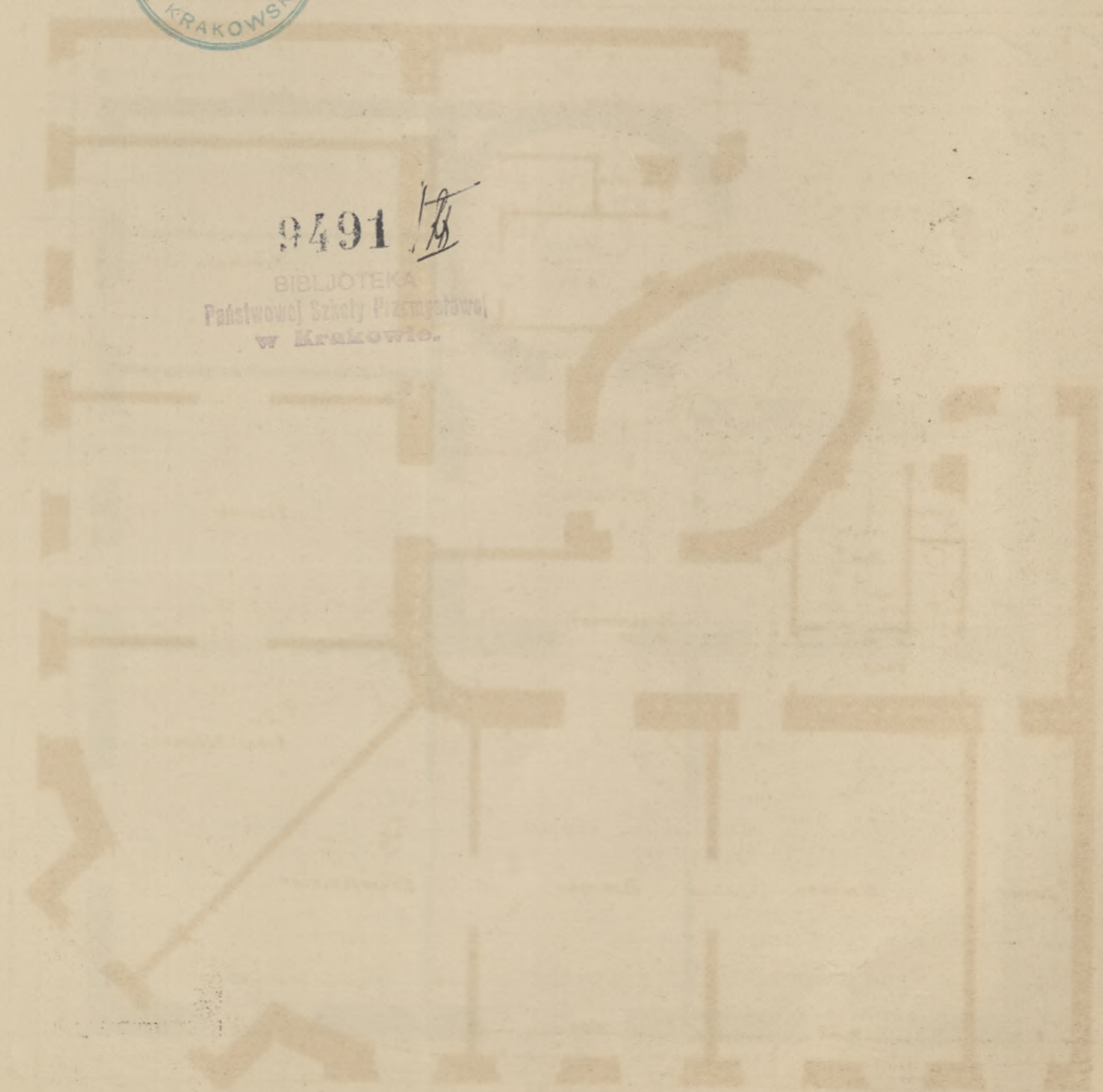
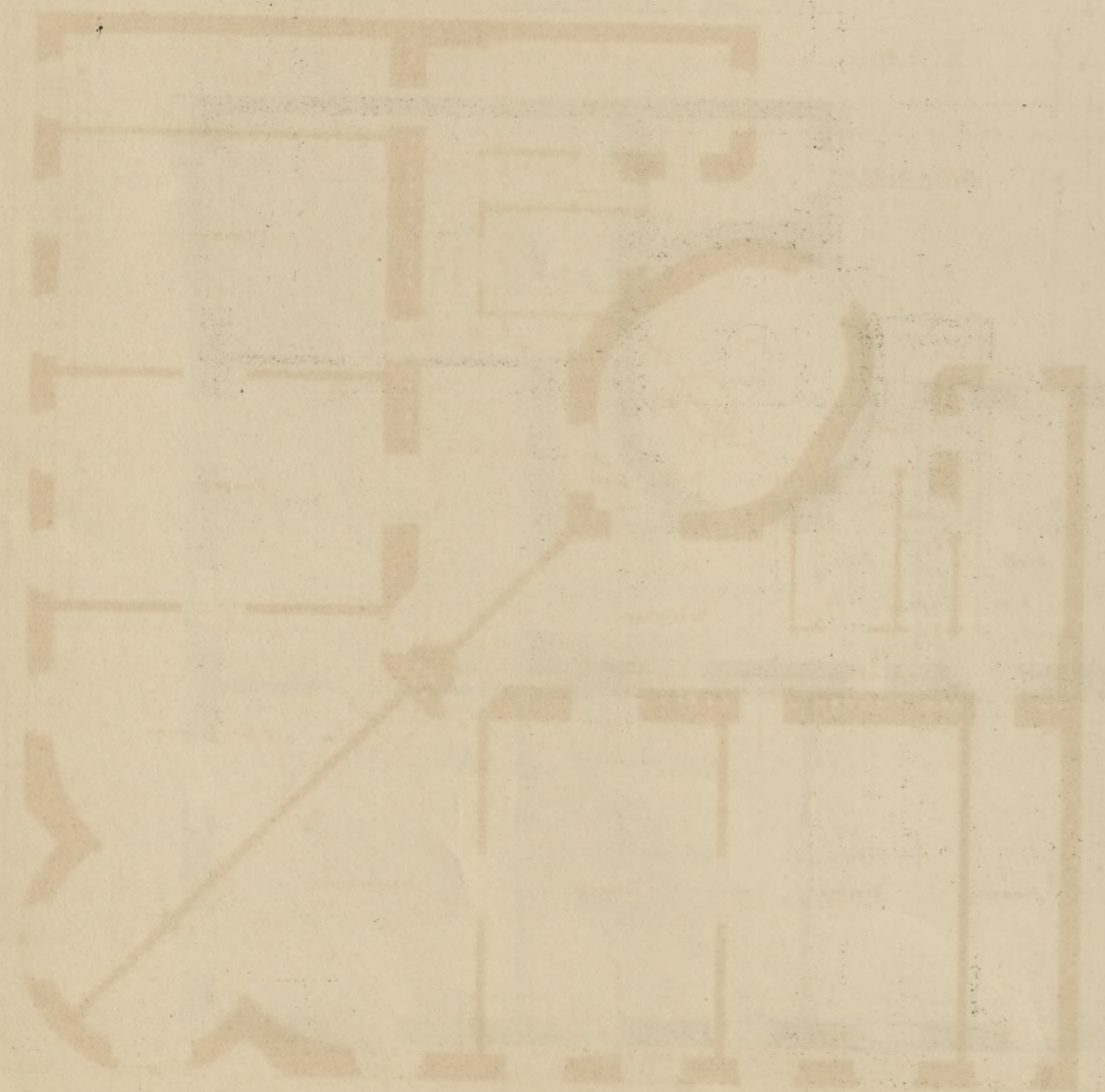
$$\text{HOF} = 27.00 \text{ m}^2 = 10.15 \%$$



$$F = 17 \times 17 = 289.00 \text{ m}^2$$

$$\text{HOF} = 25.50 \text{ m}^2 = 8.82 \%$$





9491 *18*

BIBLIOTEKA
Państwowej Szkoły Przemysłowej
w Krakowie.

SERIE 1.

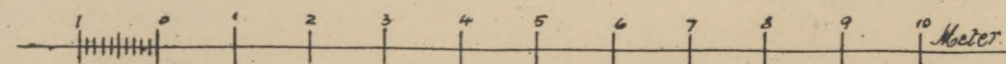
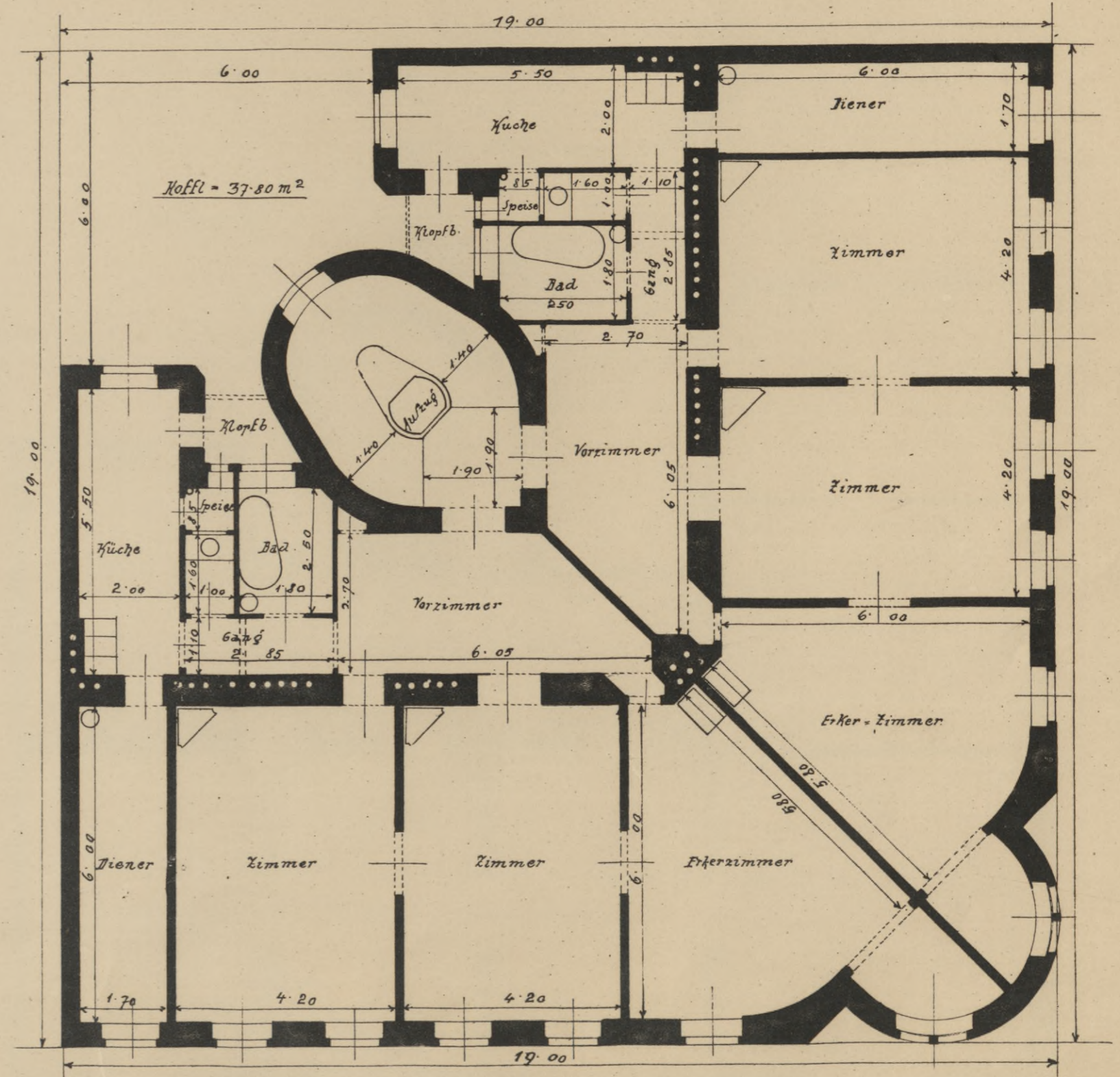
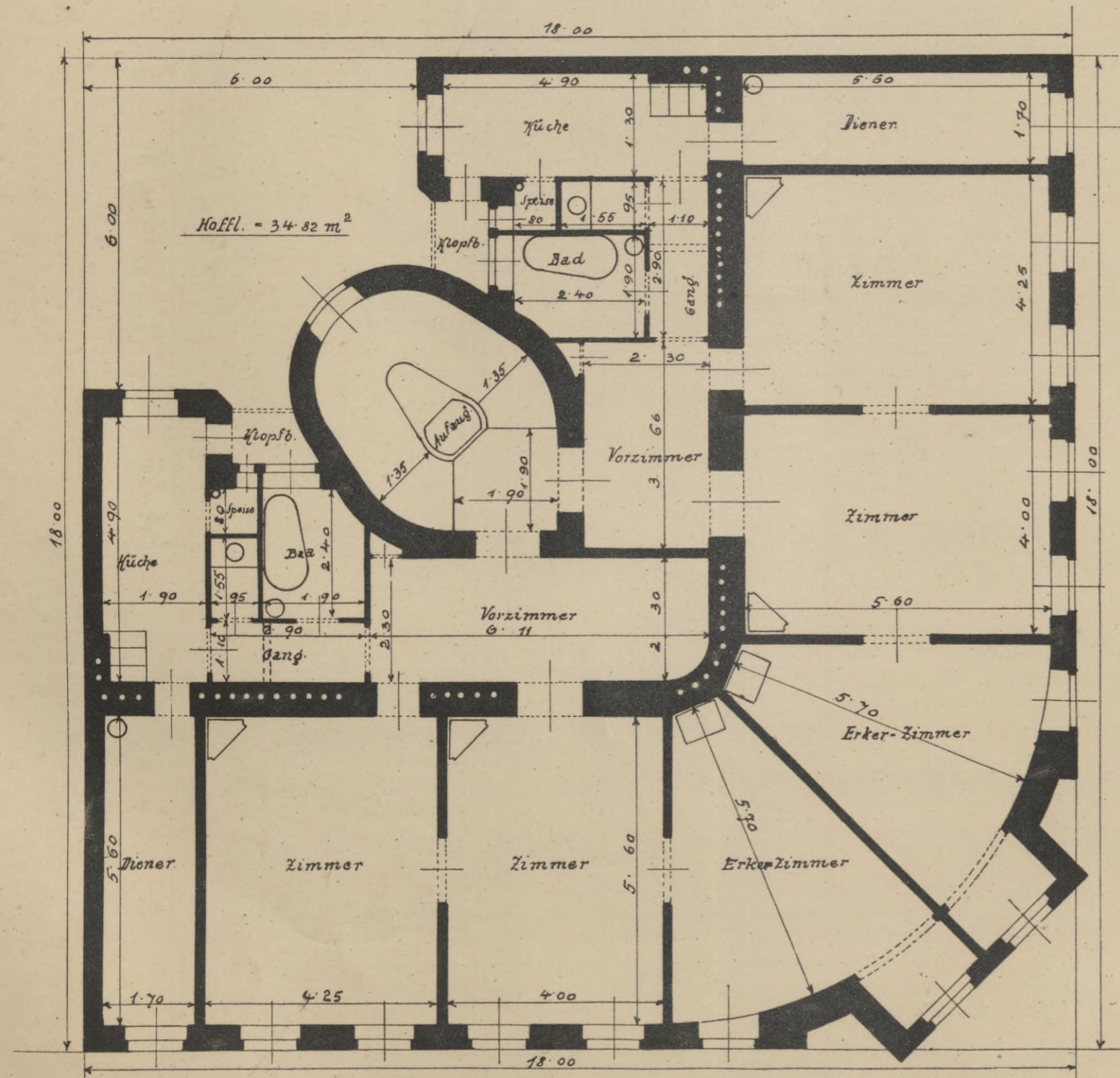
$F = 18 \times 18 = 324.00 \text{ m}^2$

$\text{Hof} = 34.82 \text{ m}^2 = 10.74\%$

[2. WOHNUNGEN.]

$F = 19 \times 19 = 361.00 \text{ m}^2$

$\text{Hof} = 37.80 \text{ m}^2 = 10.47\%$





491 / 171

BIBLIOTEKA
Państwowej Szkoły Przemysłowej
w Krakowie.

SERIE 1.

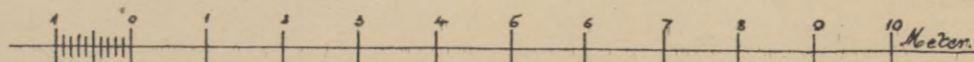
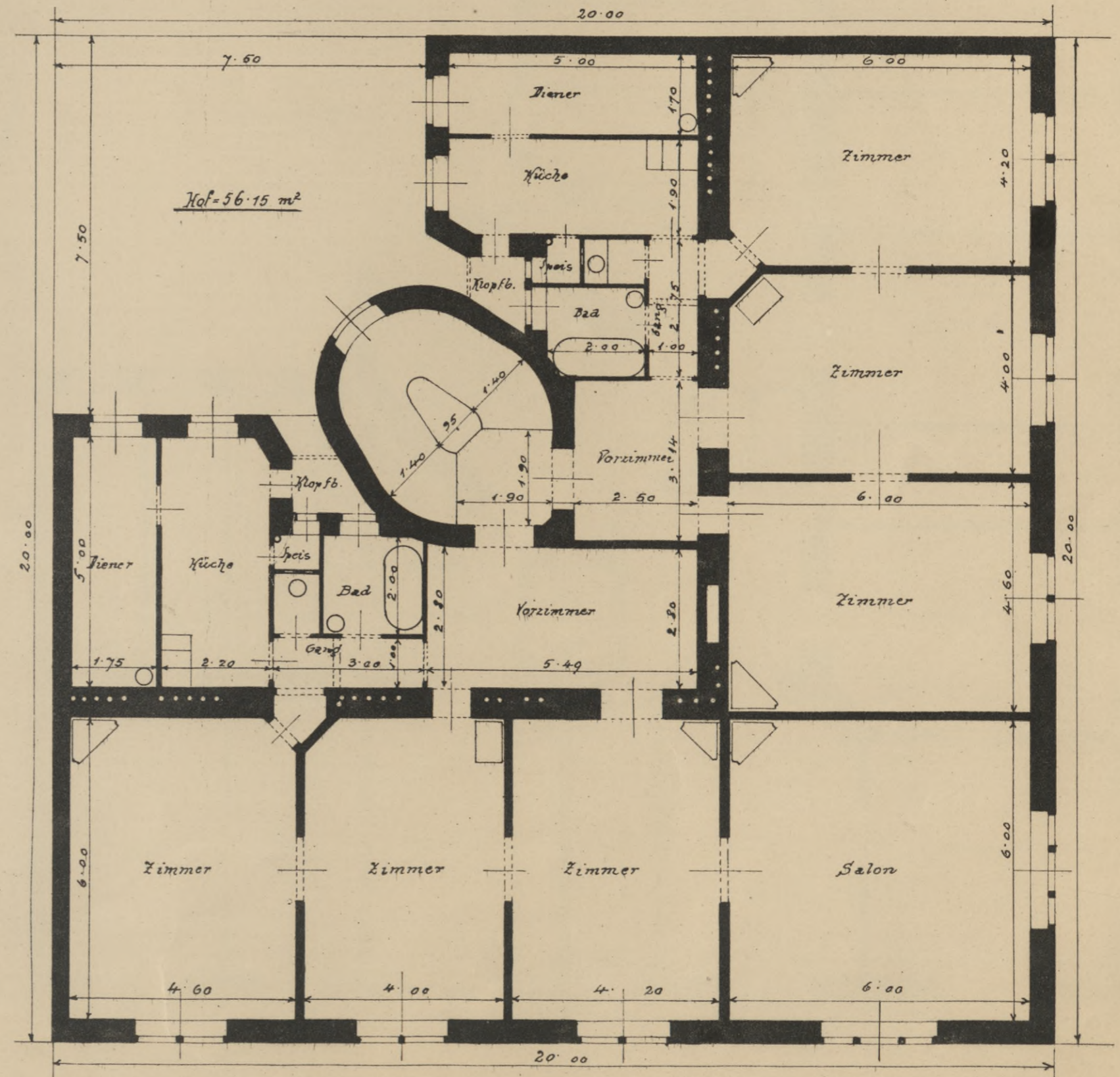
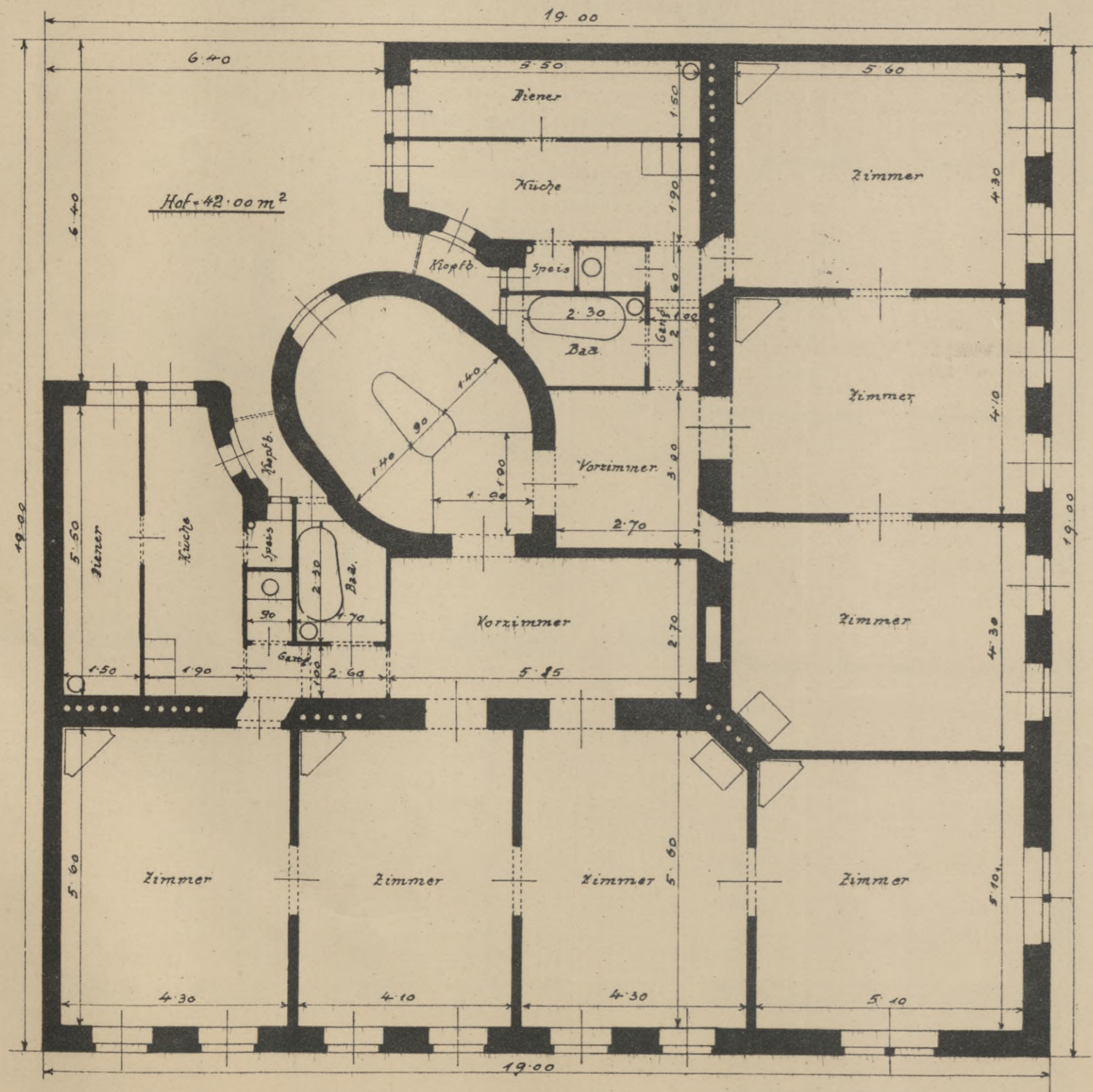
$$F = 19 \times 19 = 361.00 \text{ m}^2$$

$$\text{Hof} = 42.00 \text{ m}^2 = 11.63 \text{ ‰}$$

2. WOHNUNGEN.

$$F = 20 \times 20 = 400.00 \text{ m}^2$$

$$\text{Hof} = 56.15 \text{ m}^2 = 14.00 \text{ ‰}$$





1491/A

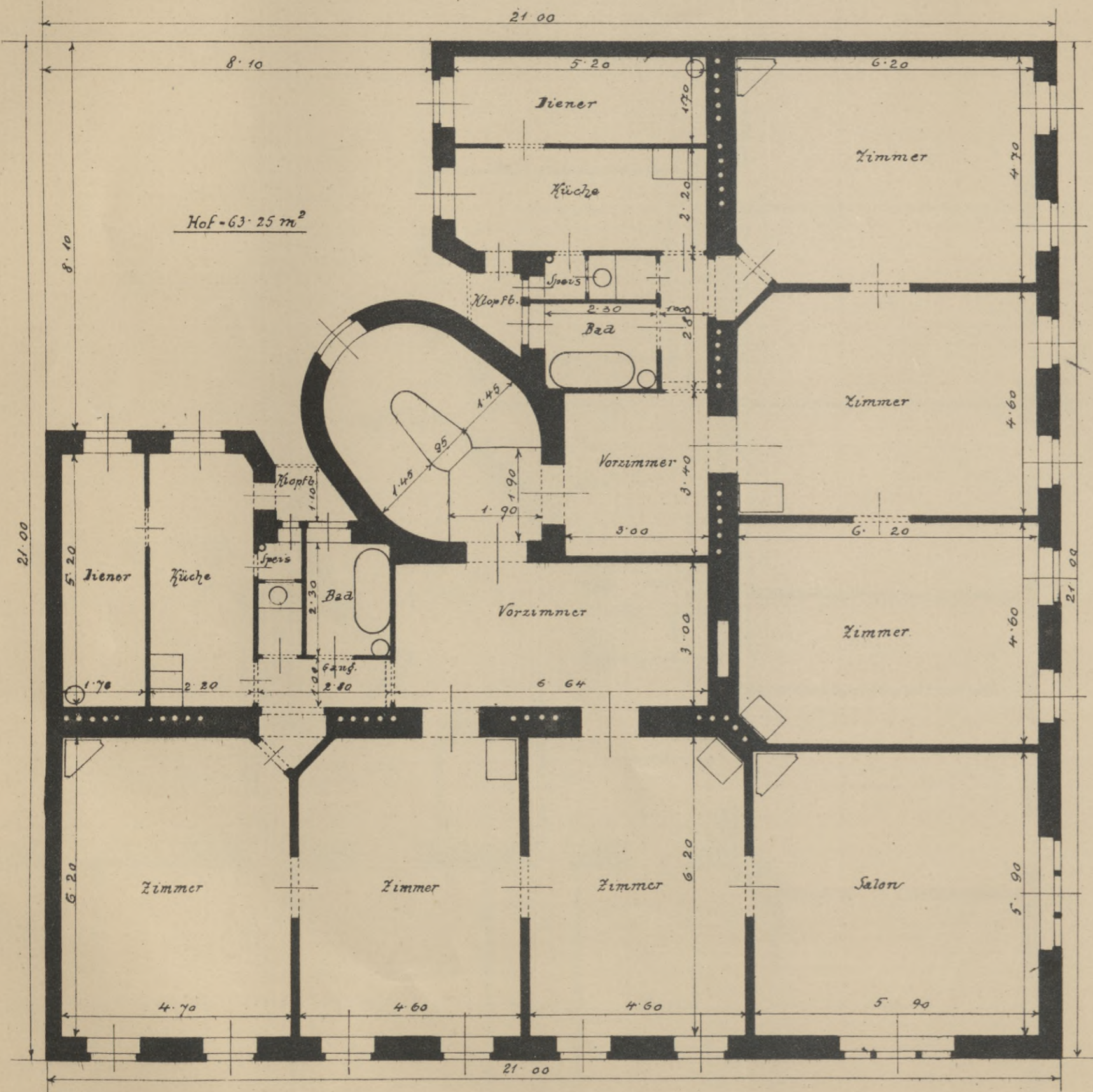
BIBLIOTEKA
Państwowej Szkoły Przemysłowej
w Krakowie.

SERIE 1.

$$F = 21 \times 21 = 441.00 \text{ m}^2$$

$$\text{Hof} = 63.25 \text{ m}^2 = 14.34\%.$$

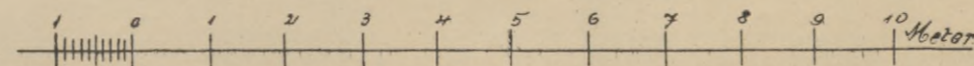
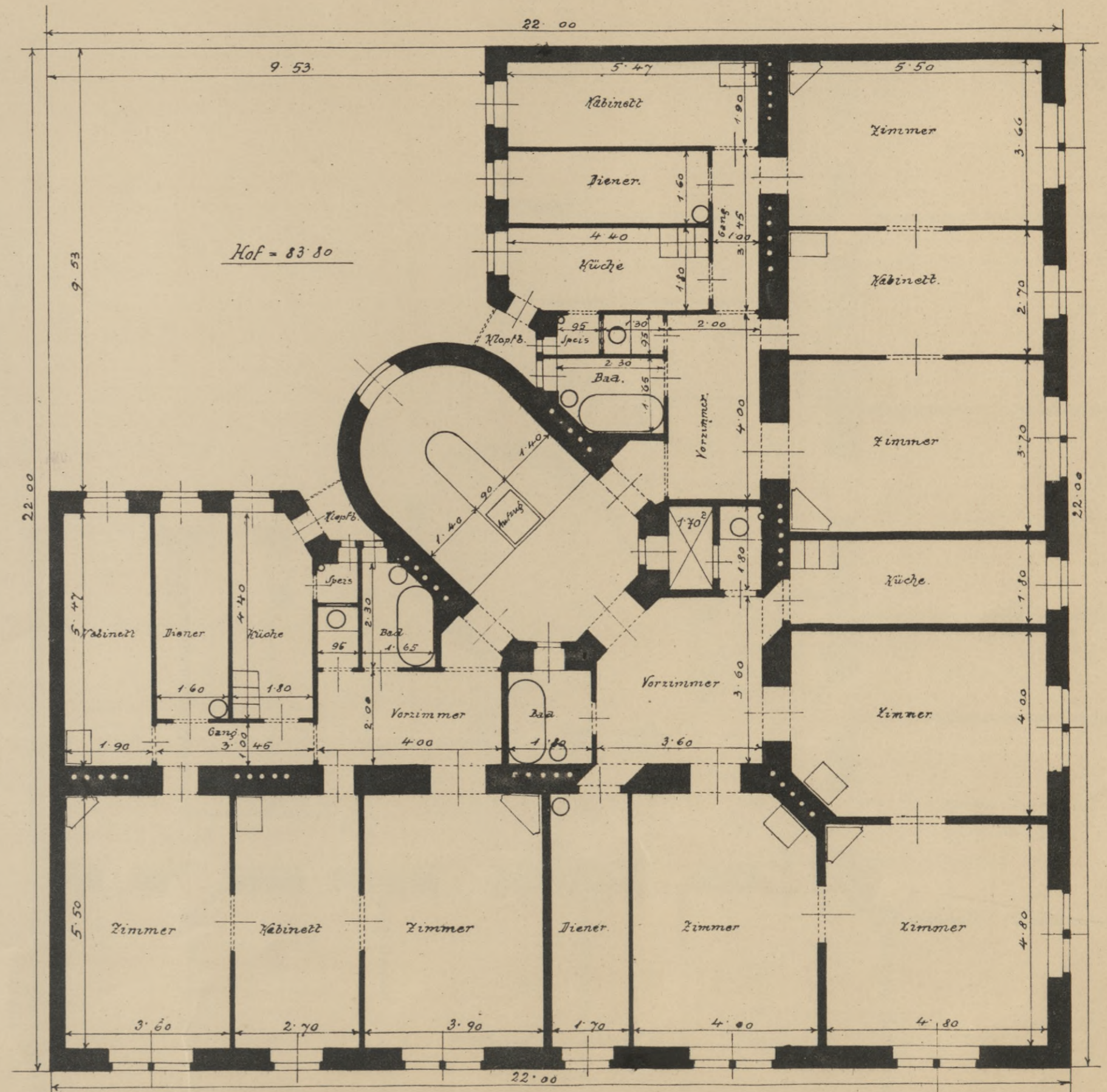
[2. WOHNUNGEN.]



$$F = 22 \times 22 = 484.00 \text{ m}^2$$

$$\text{Hof} = 83.80 \text{ m}^2 = 17.31\%$$

[3. WOHNUNGEN.]





1691/IV

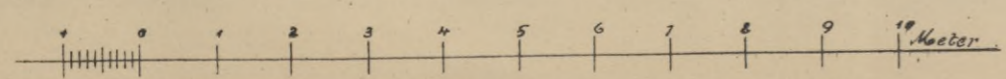
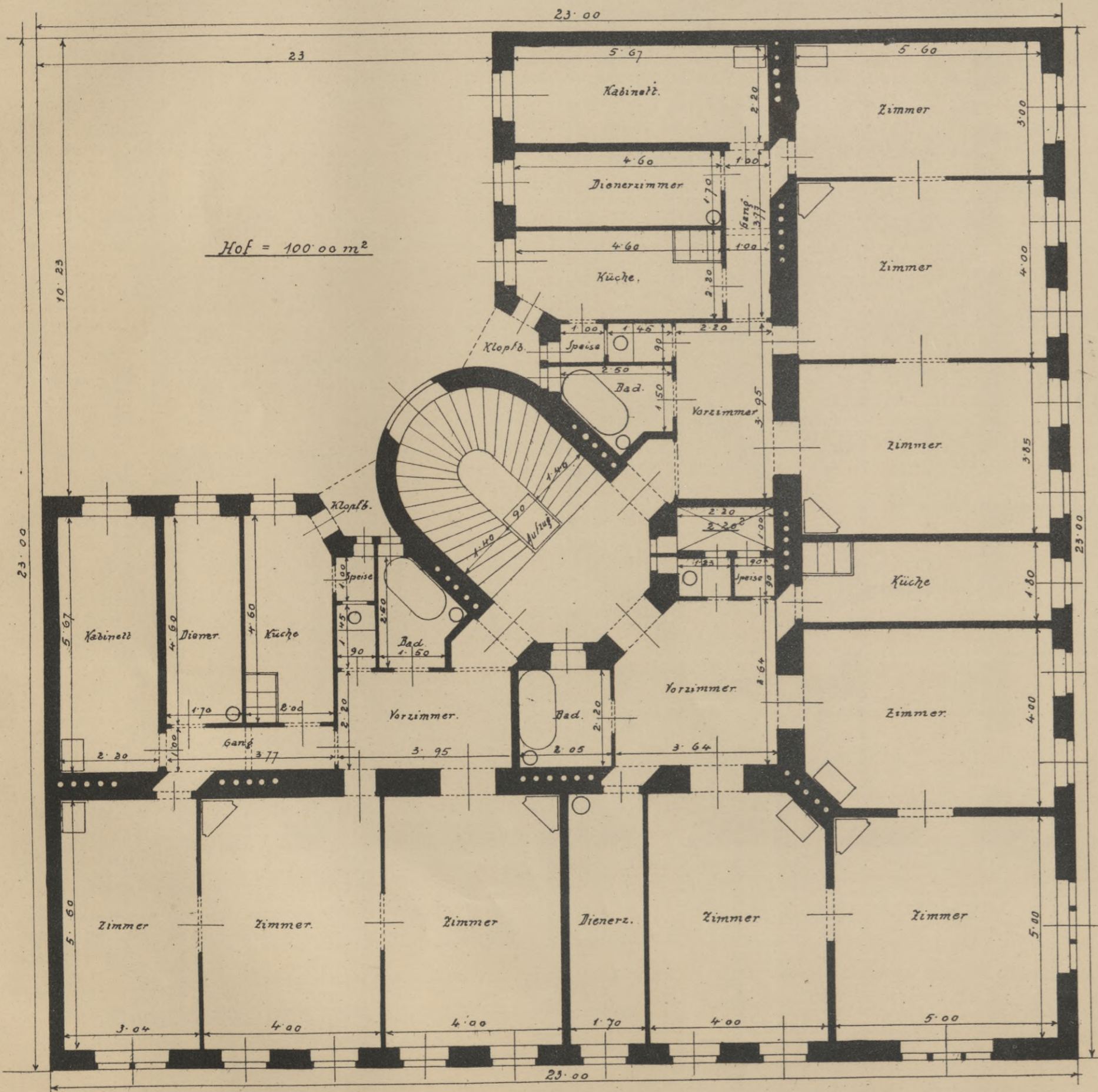
BIBLIOTEKA
Państwowej Szkoły Przemysłowej
w Krakowie.

SERIE 1.

$F = 23 \times 23 = 529.00 \text{ m}^2$

$\text{Hof} = 100.00 \text{ m}^2 = 18.90 \text{ ‰}$

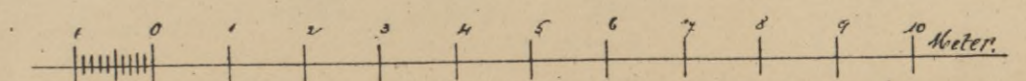
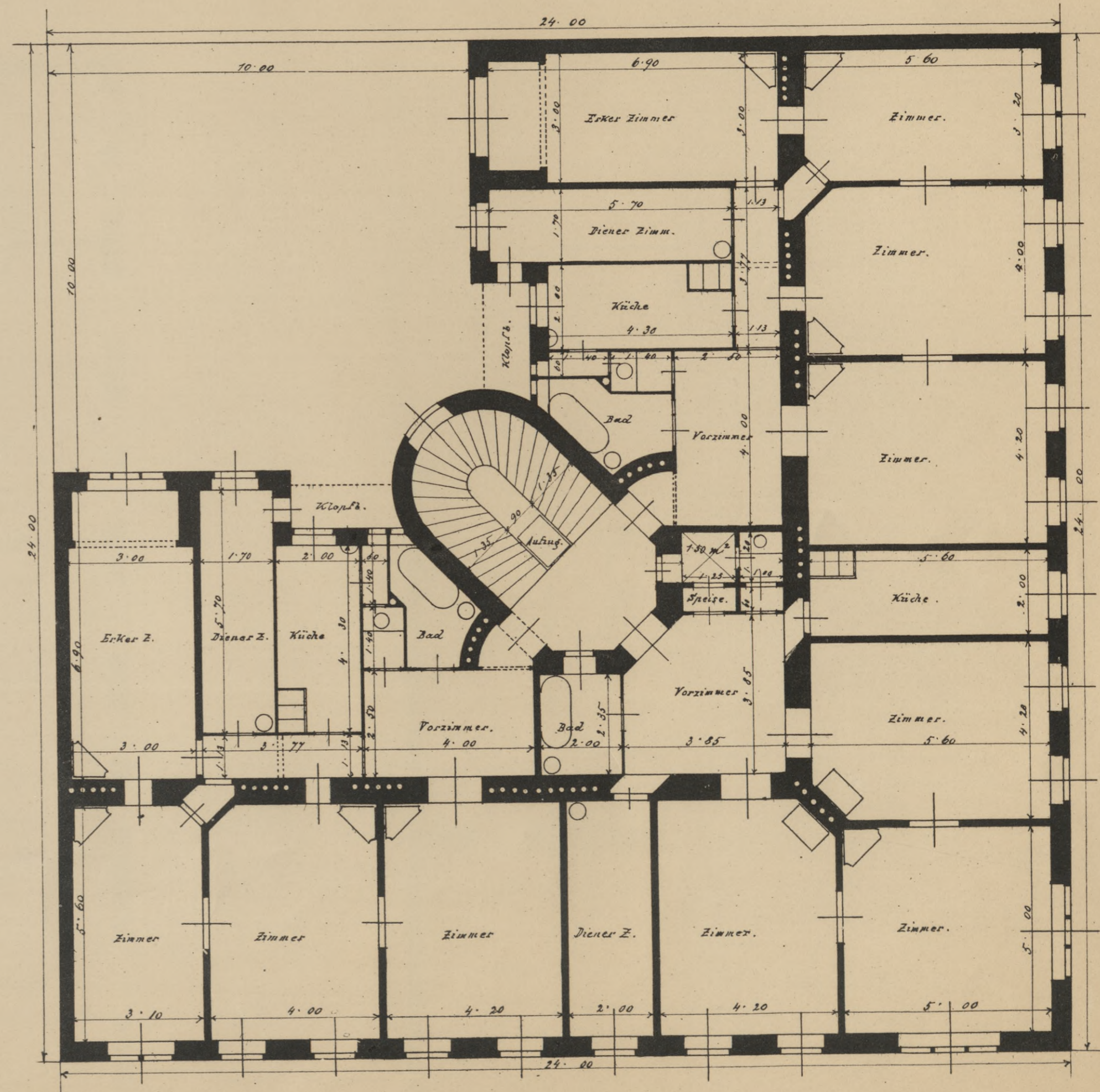
[3. WOHNUNGEN.]



$F = 24 \times 24 = 576.00 \text{ m}^2$

$\text{HOF} = 106.00 \text{ m}^2 = 18.50 \text{ ‰}$

[3. WOHNUNGEN.]





9491/II

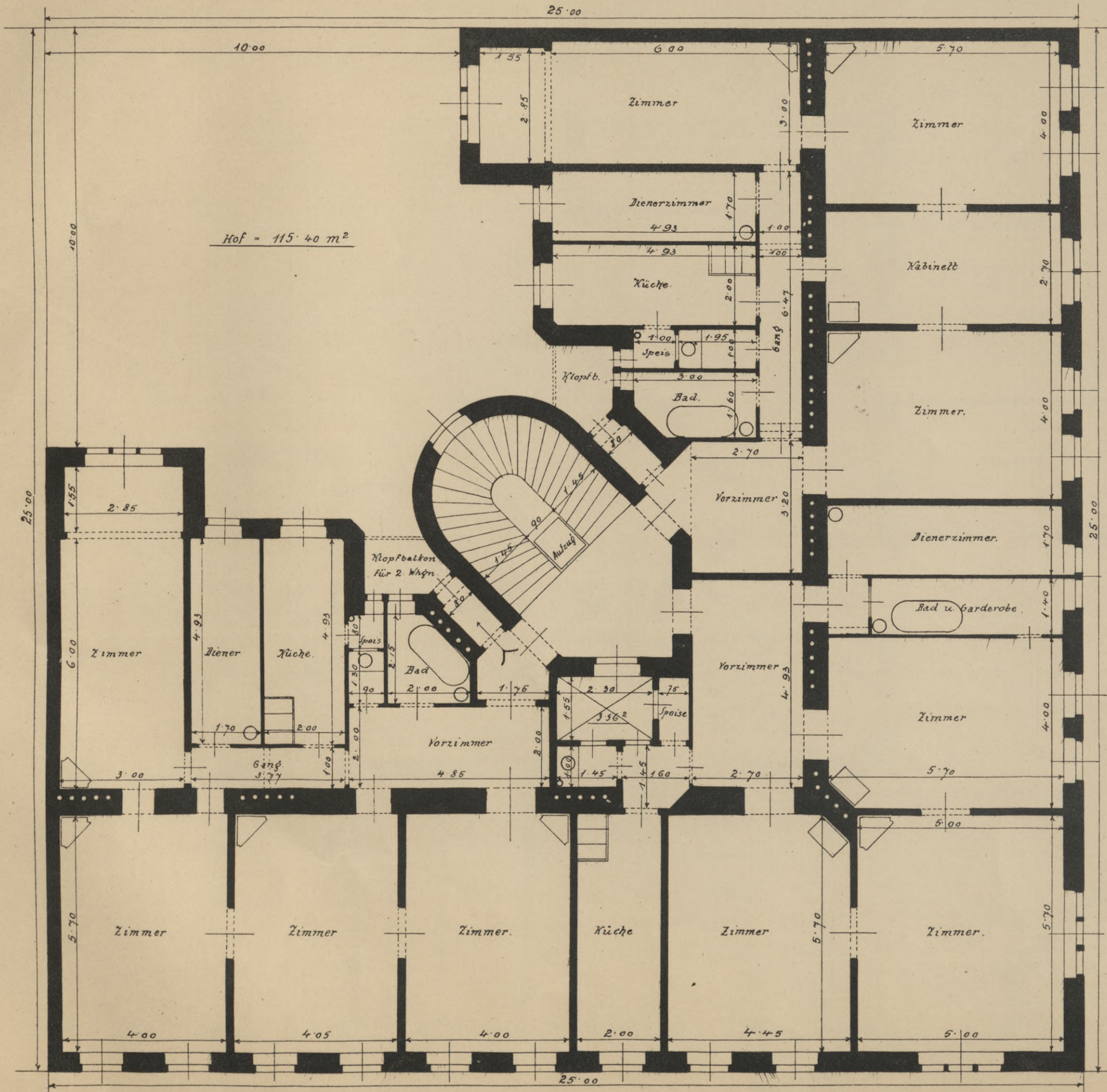
BIBLIOTEKA
Państwowej Szkoły Przemysłowej
w Krakowie.

SERIE 1.

$F = 25 \times 25 = 625.00 \text{ m}^2.$

$\text{Hof} = 115.40 \text{ m}^2 = 19.60\%$

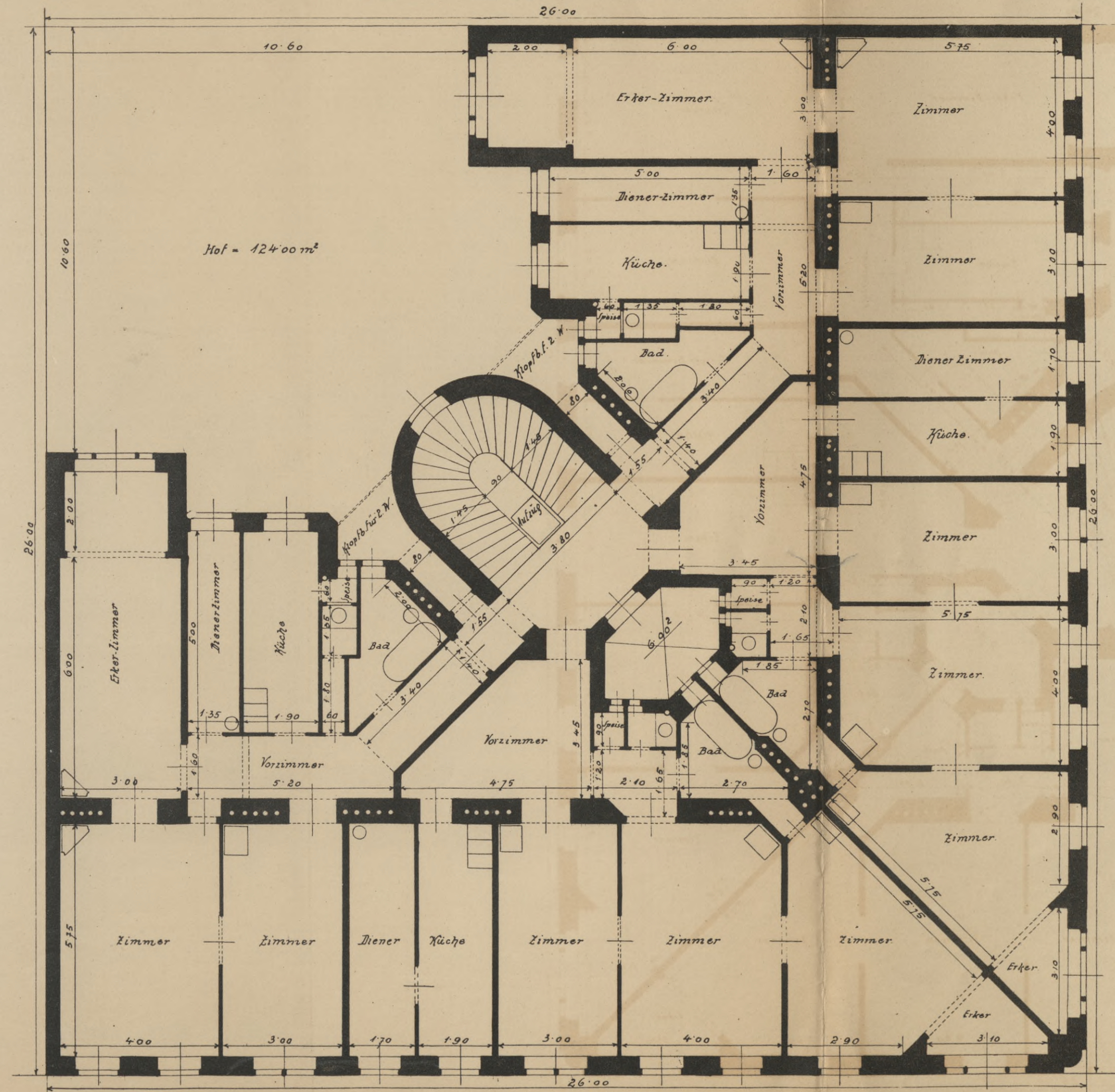
[3 WOHNUNGEN.]



$F = 676.00 \text{ m}^2$

$\text{Hof} = 124.00 \text{ m}^2 = 18.34\%$

[4 WOHNUNGEN.]





3491 / 81

BIBLIOTEKA
Państwowej Szkoły Przemysłowej
w Krakowie.

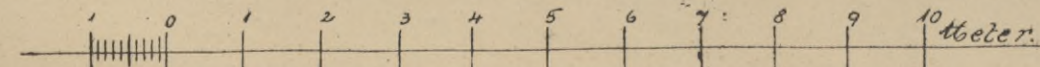
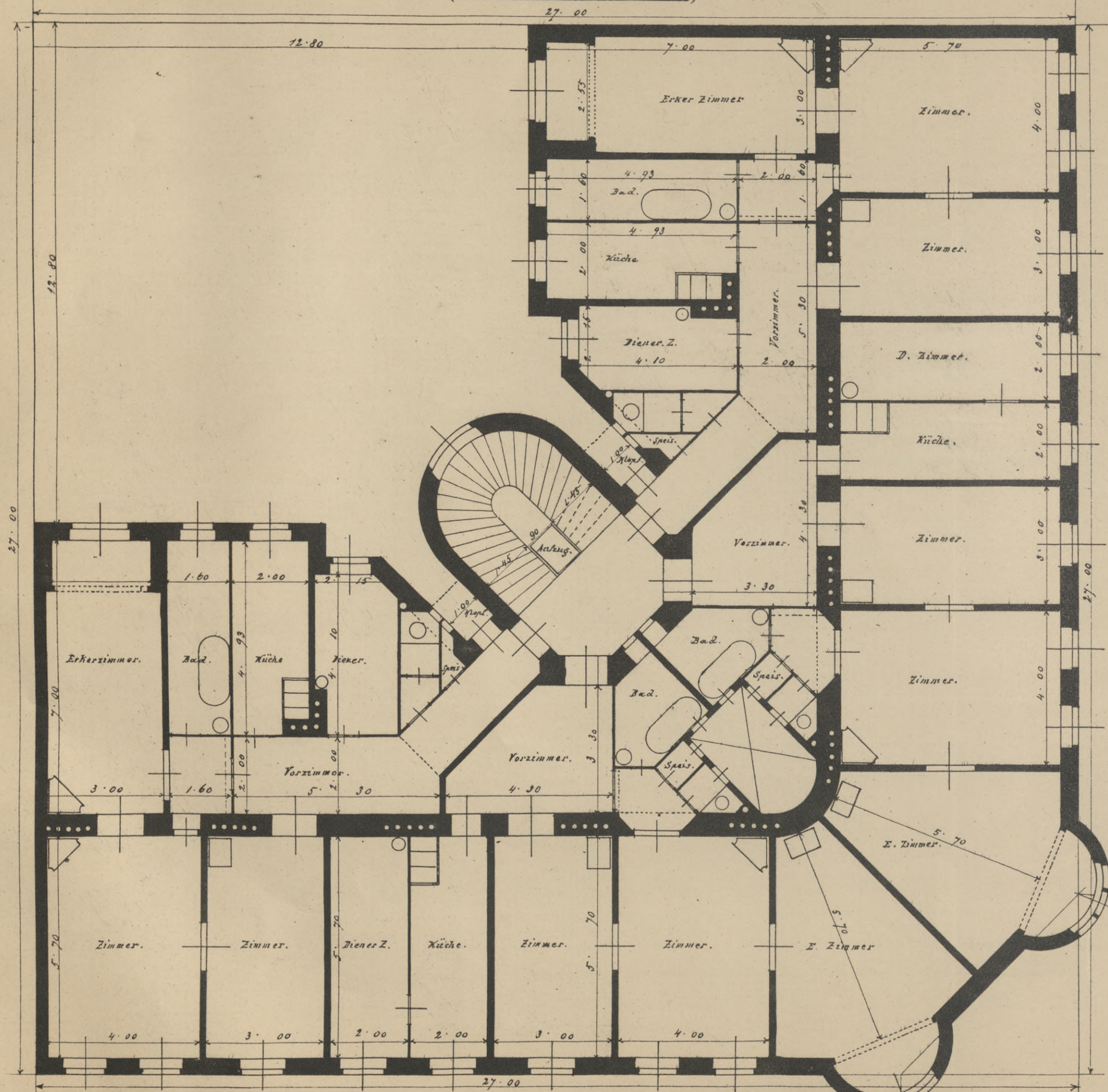
Biblioteka
Państwowej Szkoły Przemysłowej
w Krakowie.

SERIE 1.

$F = 27 \times 27 = 729.00 \text{ m}^2$

$\text{HOF} = 162.46 \text{ m}^2 = 22.63\%$

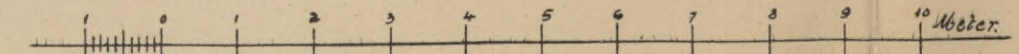
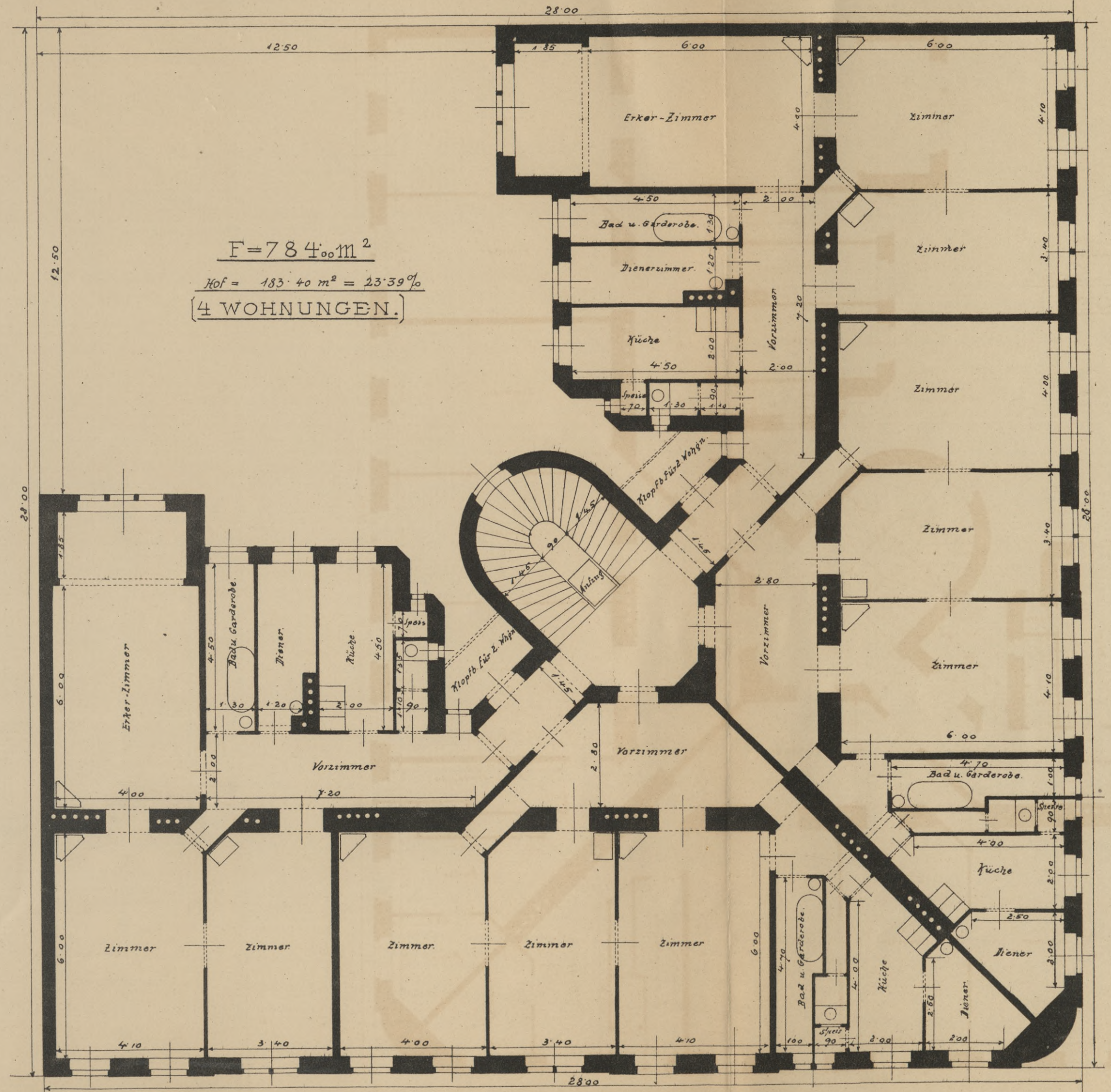
(4 WOHNUNGEN.)



$F = 784.00 \text{ m}^2$

$\text{Hof} = 183.40 \text{ m}^2 = 23.39\%$

(4 WOHNUNGEN.)



BIBLIOTEKA
Państwowej Szkoły Przemysłowej
w Krakowie.



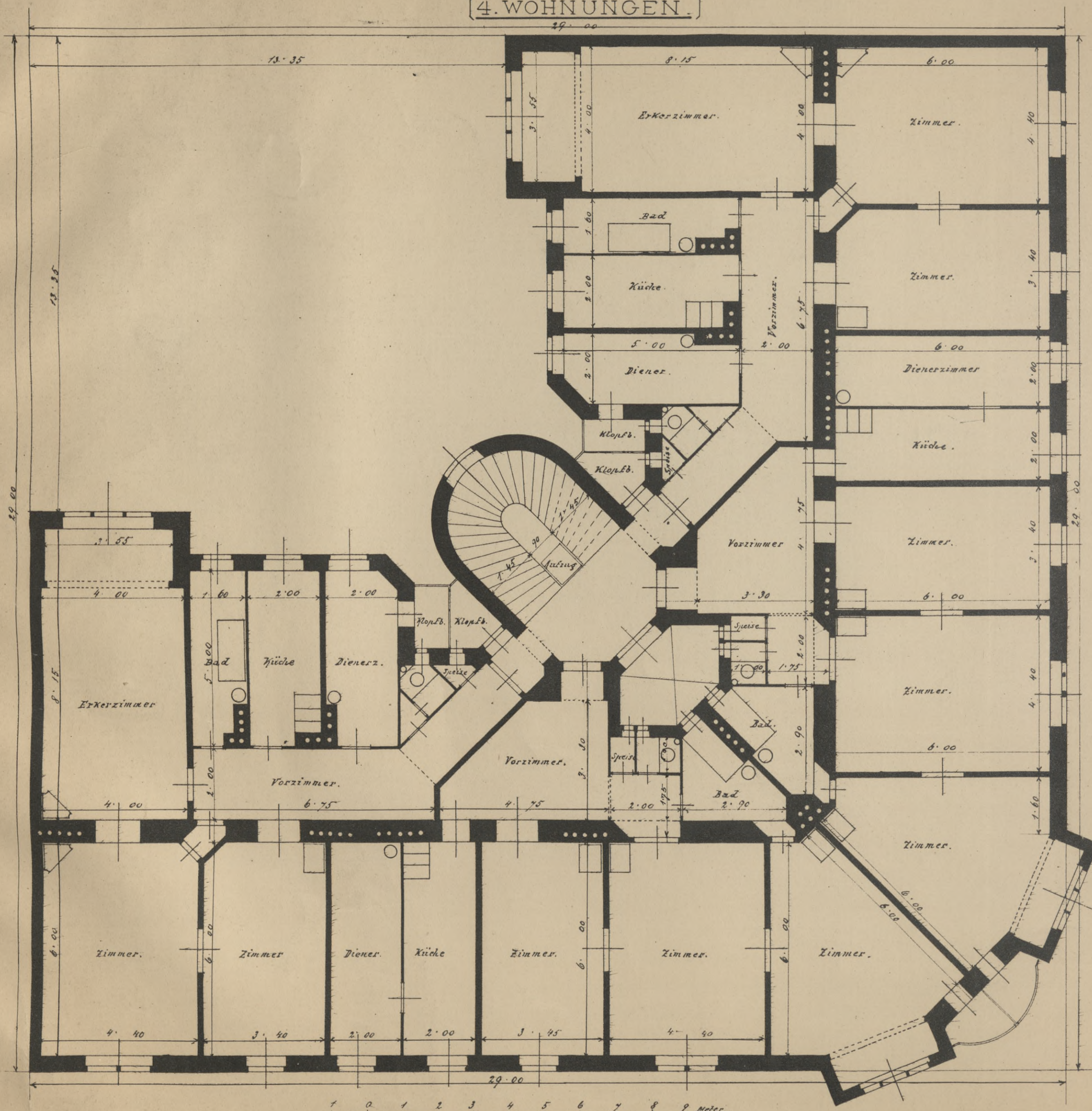
3491 / II

BIBLIOTEKA
Państwowej Szkoły Przemysłowej
w Krakowie.

$F = 29 \times 29 = 841.00 \text{ m}^2$

$\text{HOF} = 192.00 \text{ m}^2 = 22.83 \%$

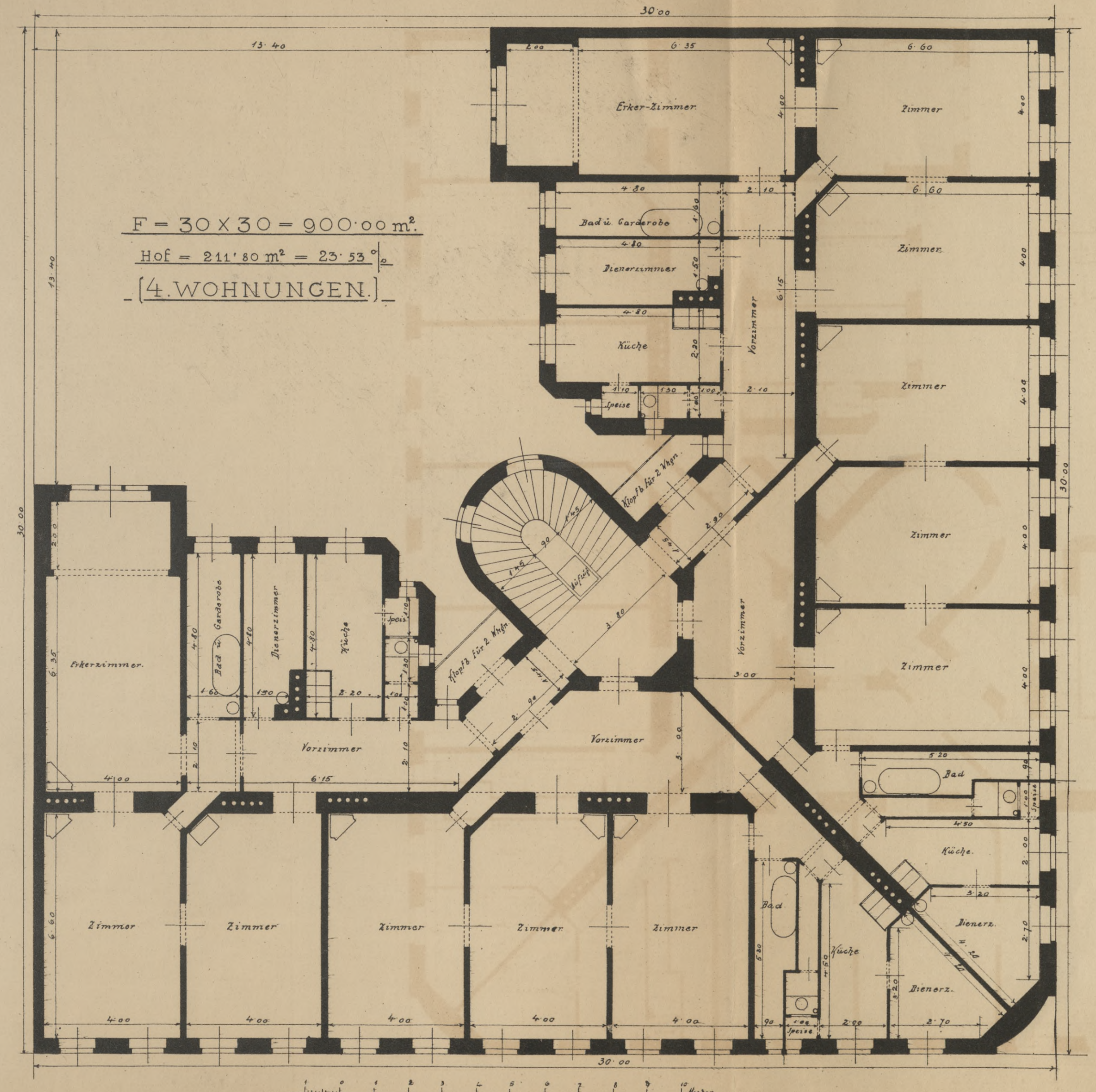
[4. WOHNUNGEN.]



$F = 30 \times 30 = 900.00 \text{ m}^2$

$\text{Hof} = 211.80 \text{ m}^2 = 23.53 \%$

[4. WOHNUNGEN.]



POLITECHNIKA KRAKOWSKA
BIBLIOTEKA GŁÓWNA
~~IV 23650~~
L. inw. 23650
dn. 24. IX. 54



0491 / II
BIBLIOTEKA
Państwowej Szkoły Przemysłowej
w Krakowie.

BIBLIOTEKA
Państwowej Szkoły Przemysłowej
w Krakowie.



S.01

S. 61

Biblioteka Politechniki Krakowskiej



IV-300987

Biblioteka Politechniki Krakowskiej



10000304096