

Liczba inwentarza 7251  
Szafa 68  
Półka a  
Miejsce 9

Liczba inwentarza 10522  
Szafa 68 - I-IV  
Półka a I-III-IV  
Miejsce ~~70~~ 9a



Wydawnictwo krajowej komisji dla spraw ~~szkół~~ przemysłowych.

7257. / II.

10522



# Metodyczne

## WZORY RYSUNKOWE

zestawił prof.

JAN ROTTER.

23c 26



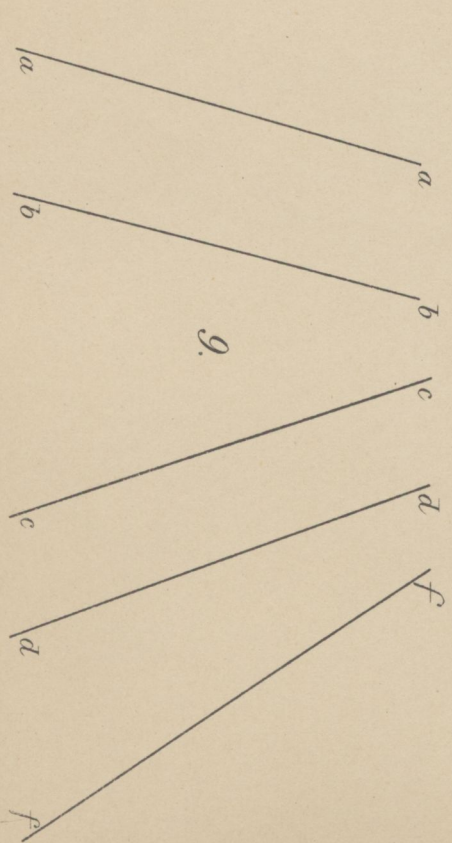
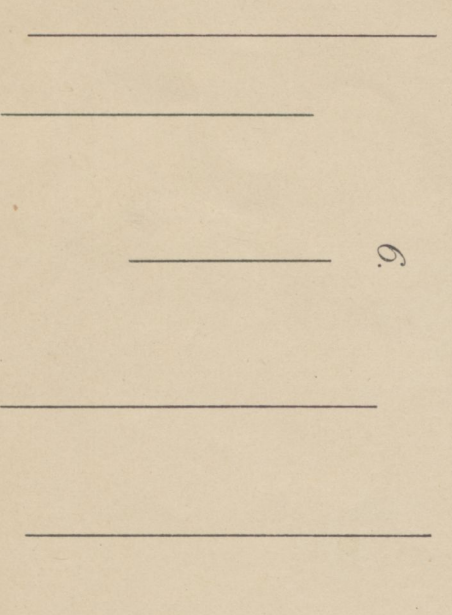
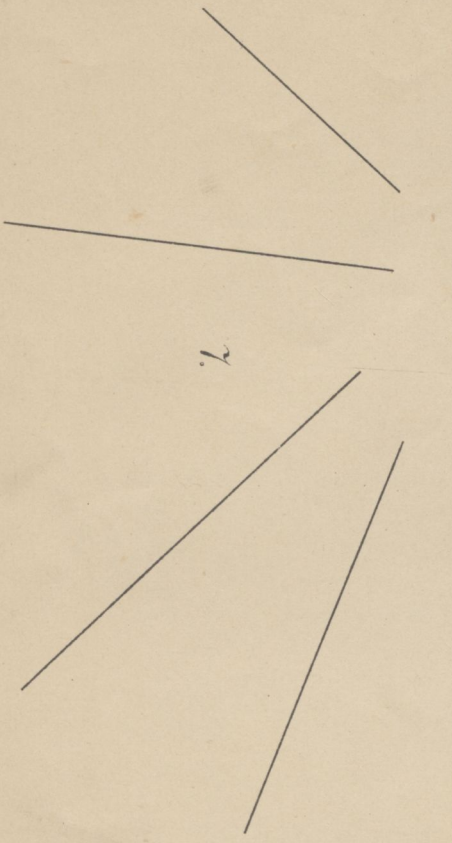
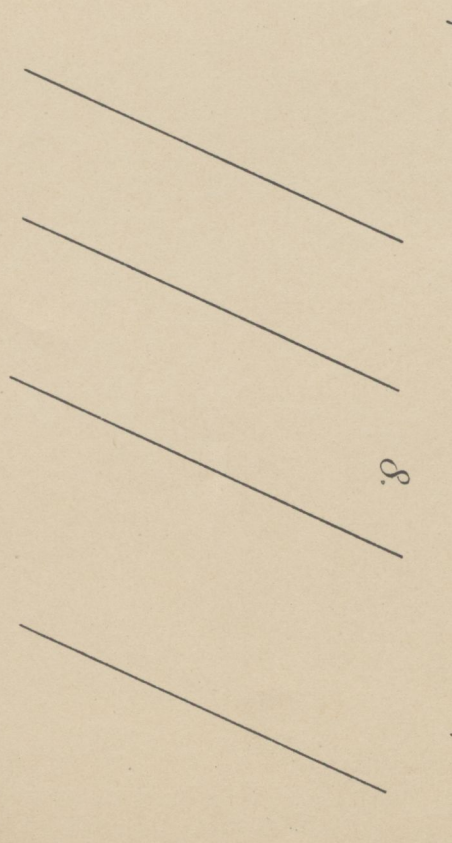
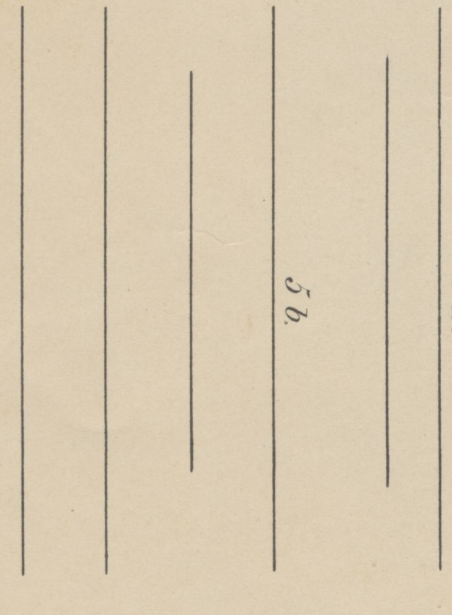
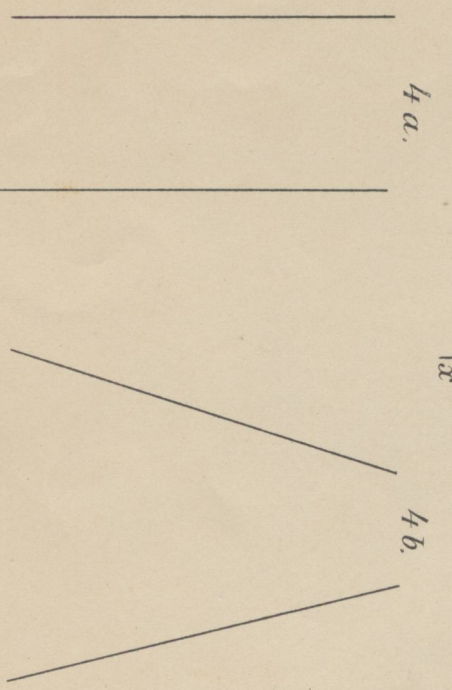
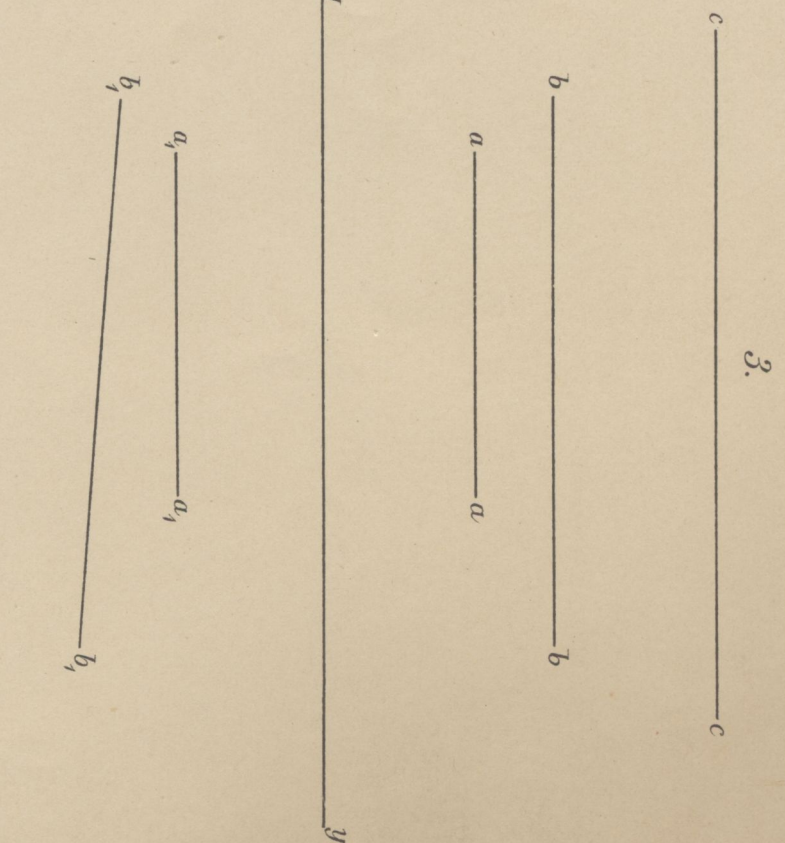
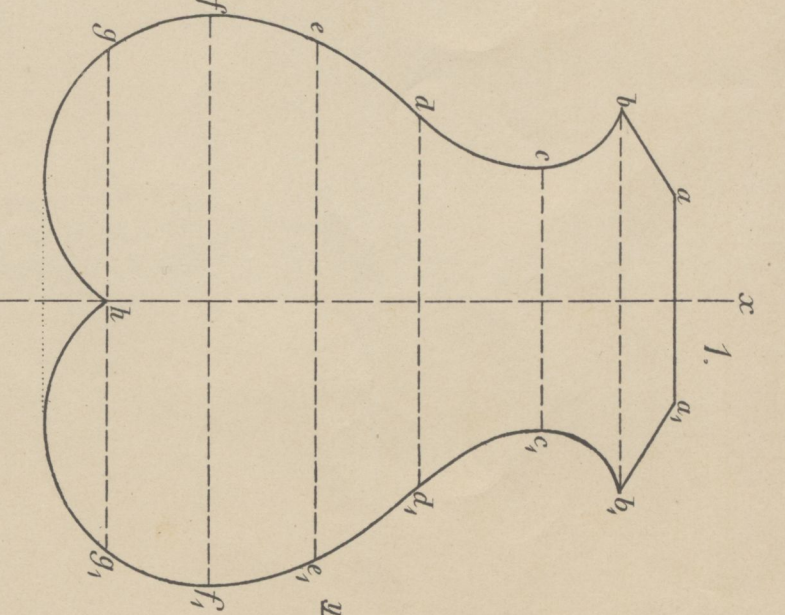
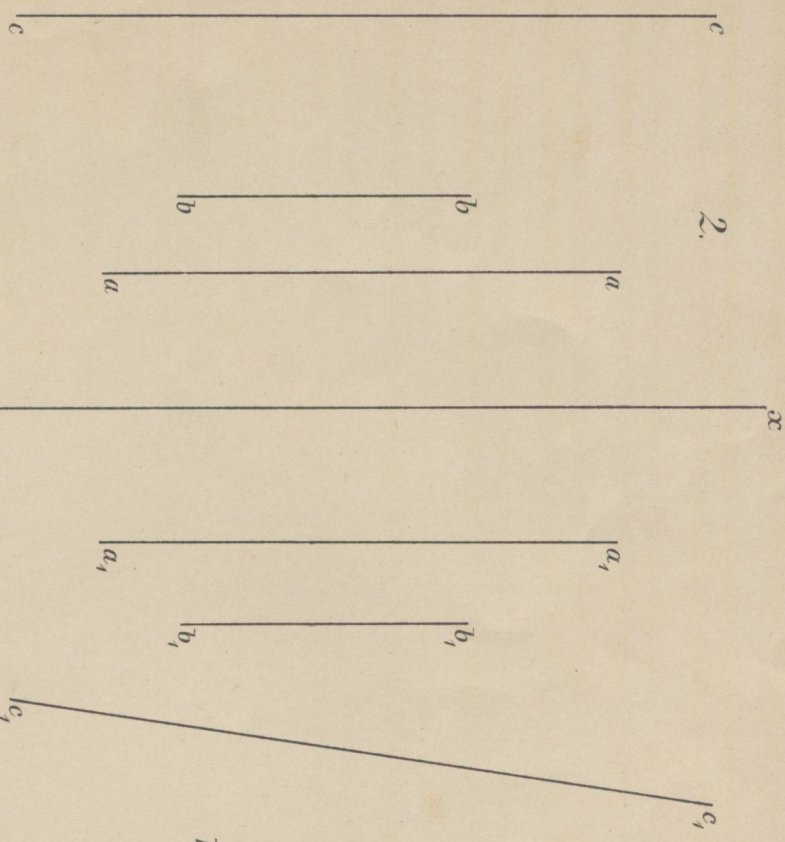
IV-301864

~~IV. 14903~~

Biblioteka Politechniki Krakowskiej

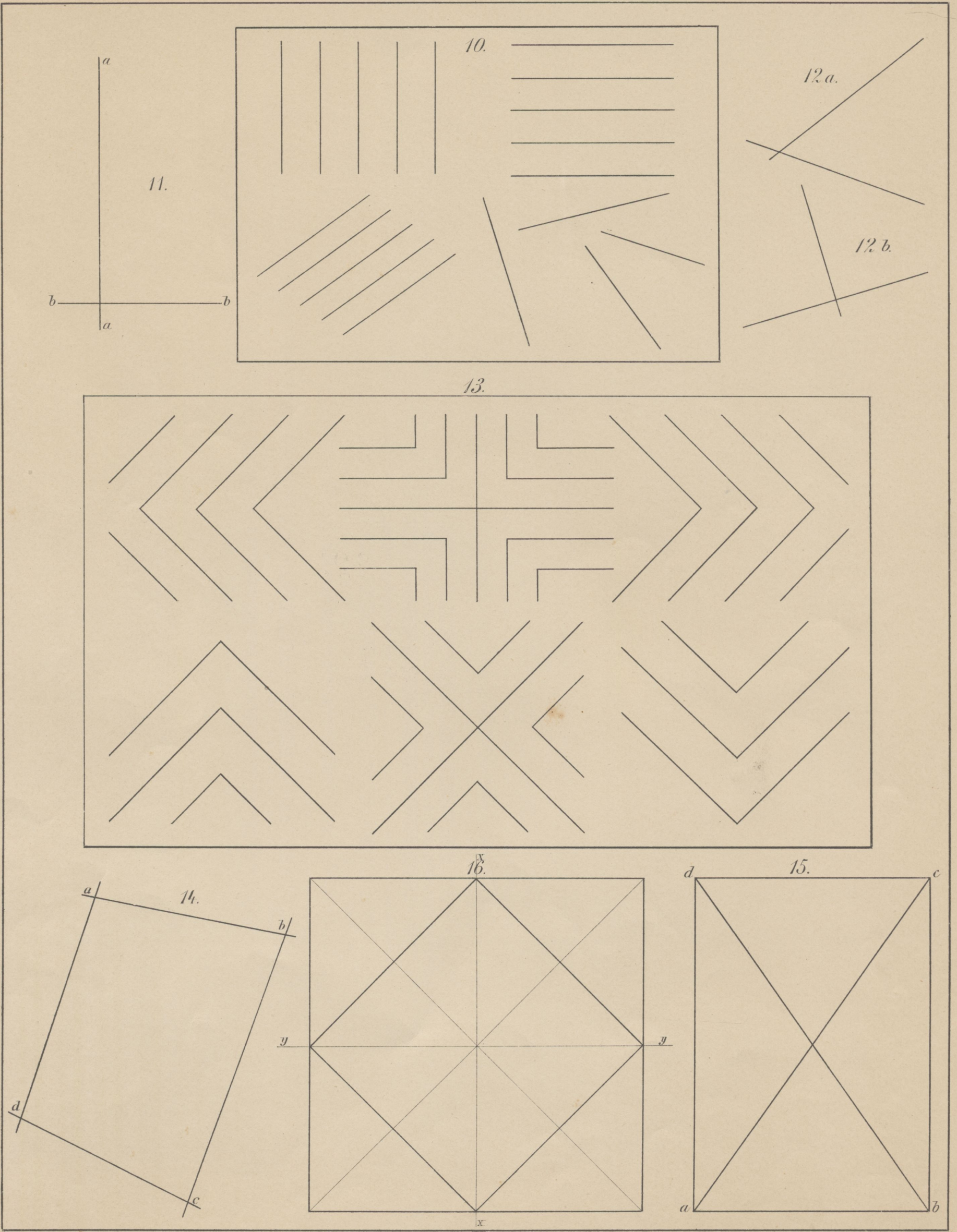


100000250941



7251

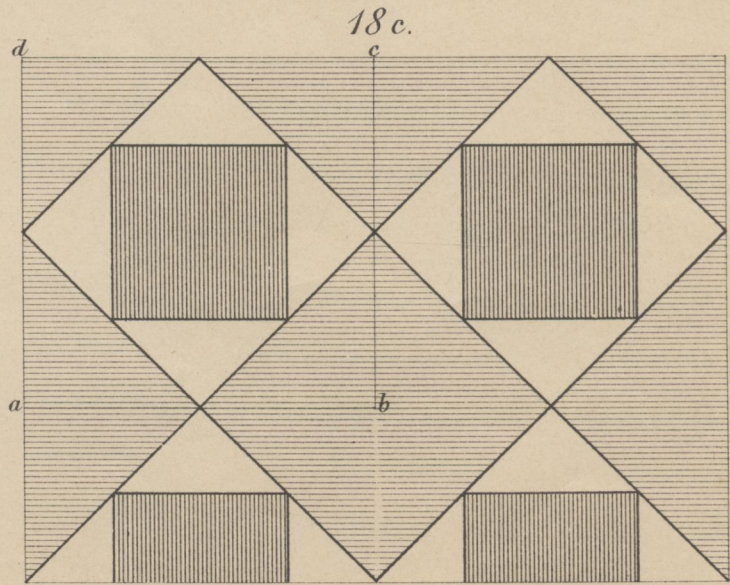
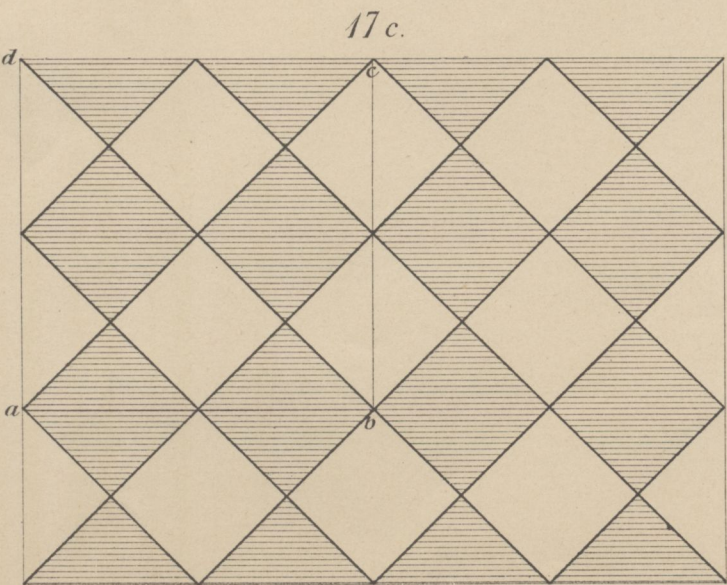
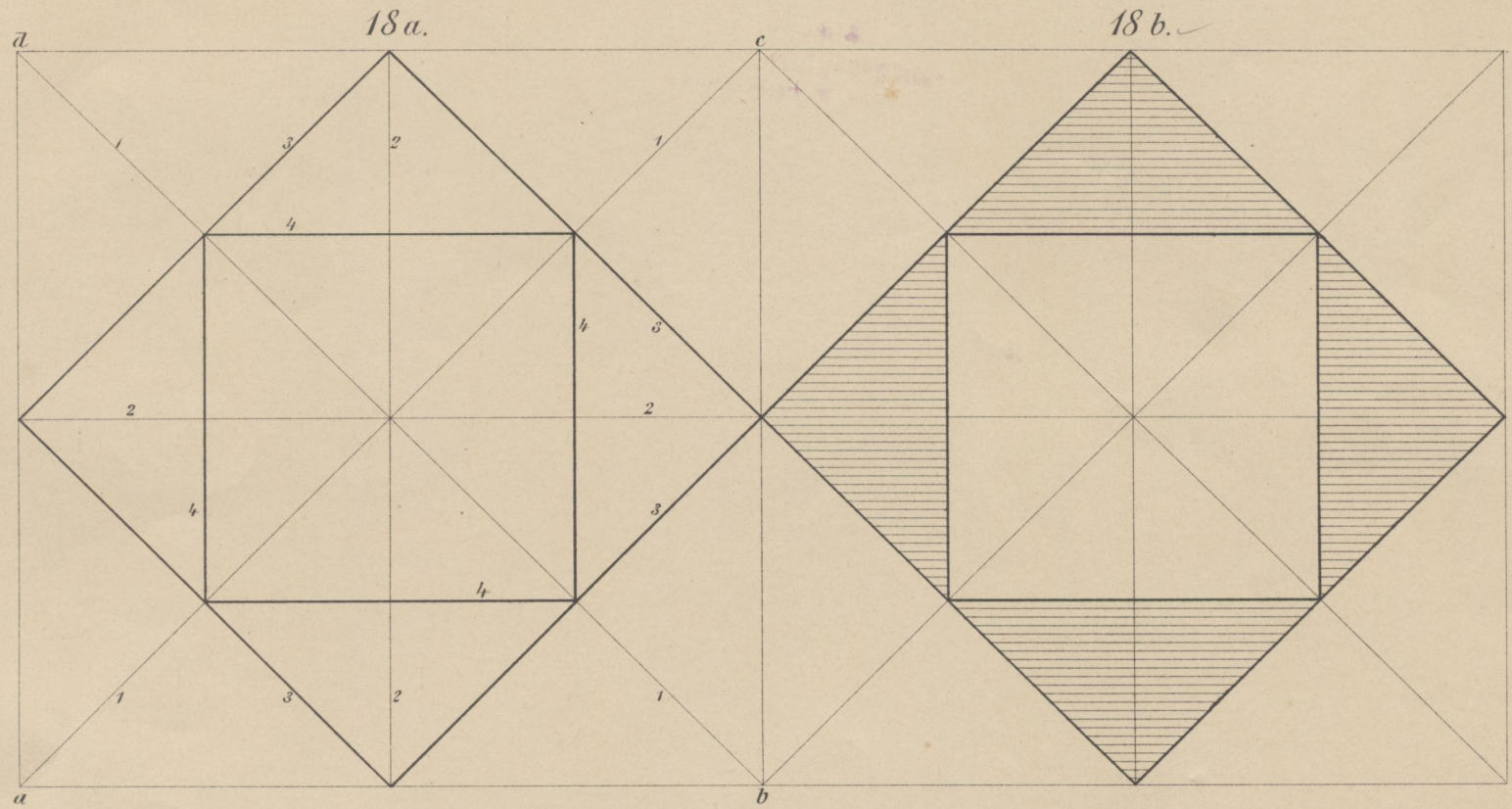
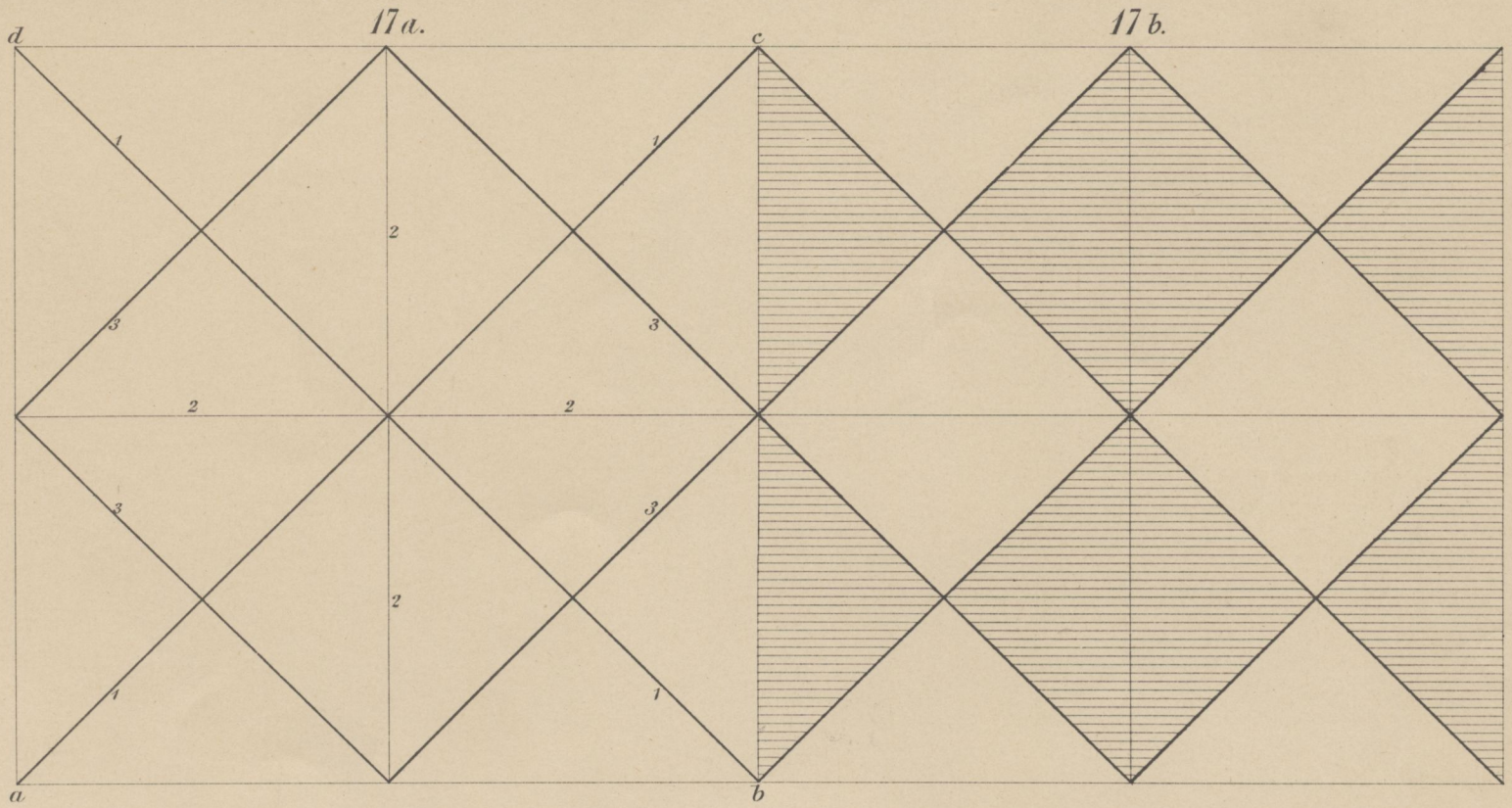
**BIBLIOTEKA**  
**Państwowej Szkoły Przemysłowej**  
**w Krakowie.**



7251

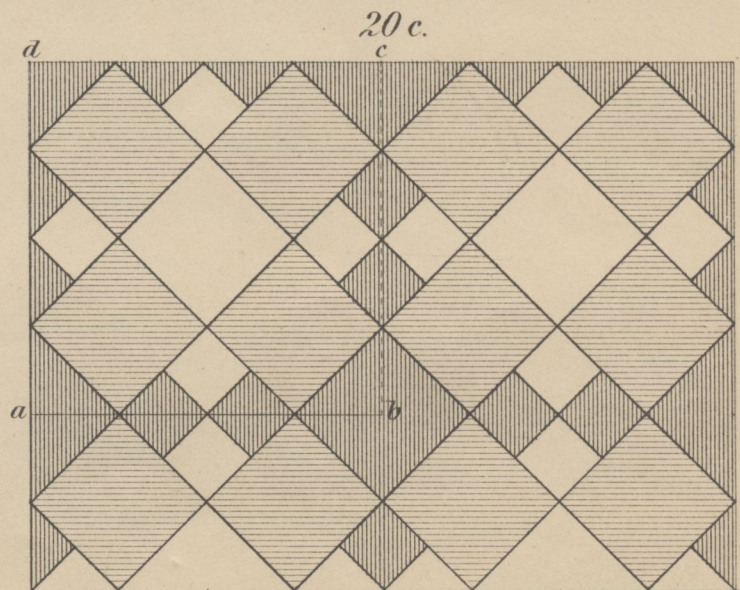
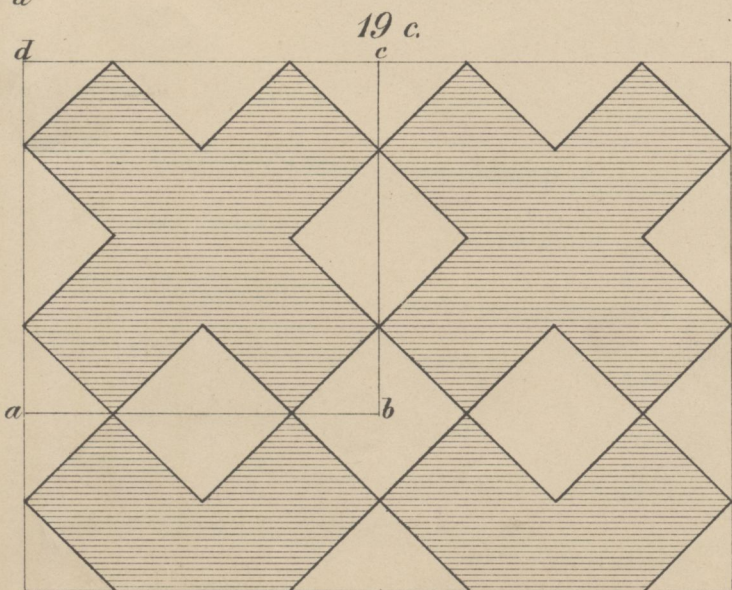
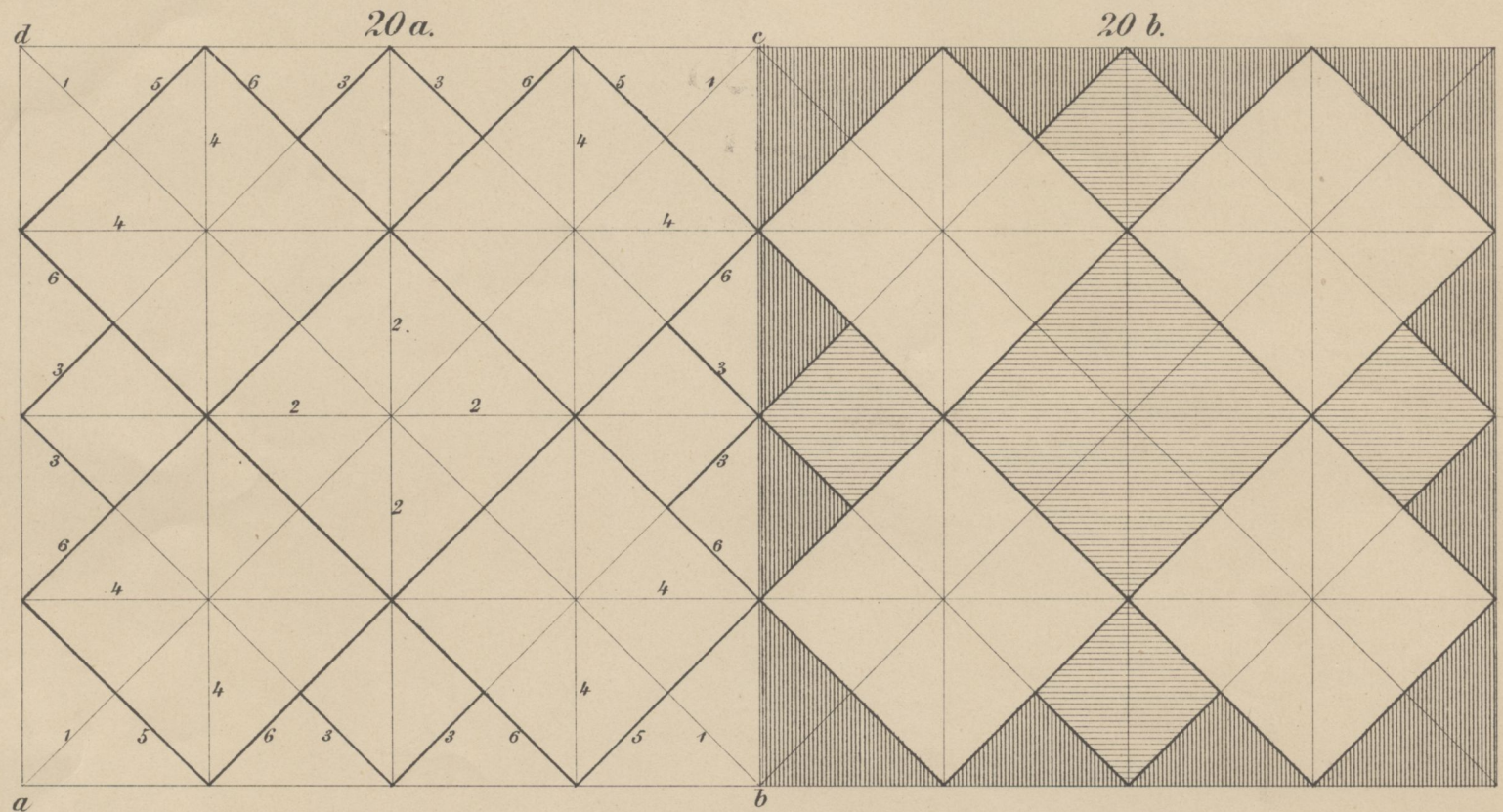
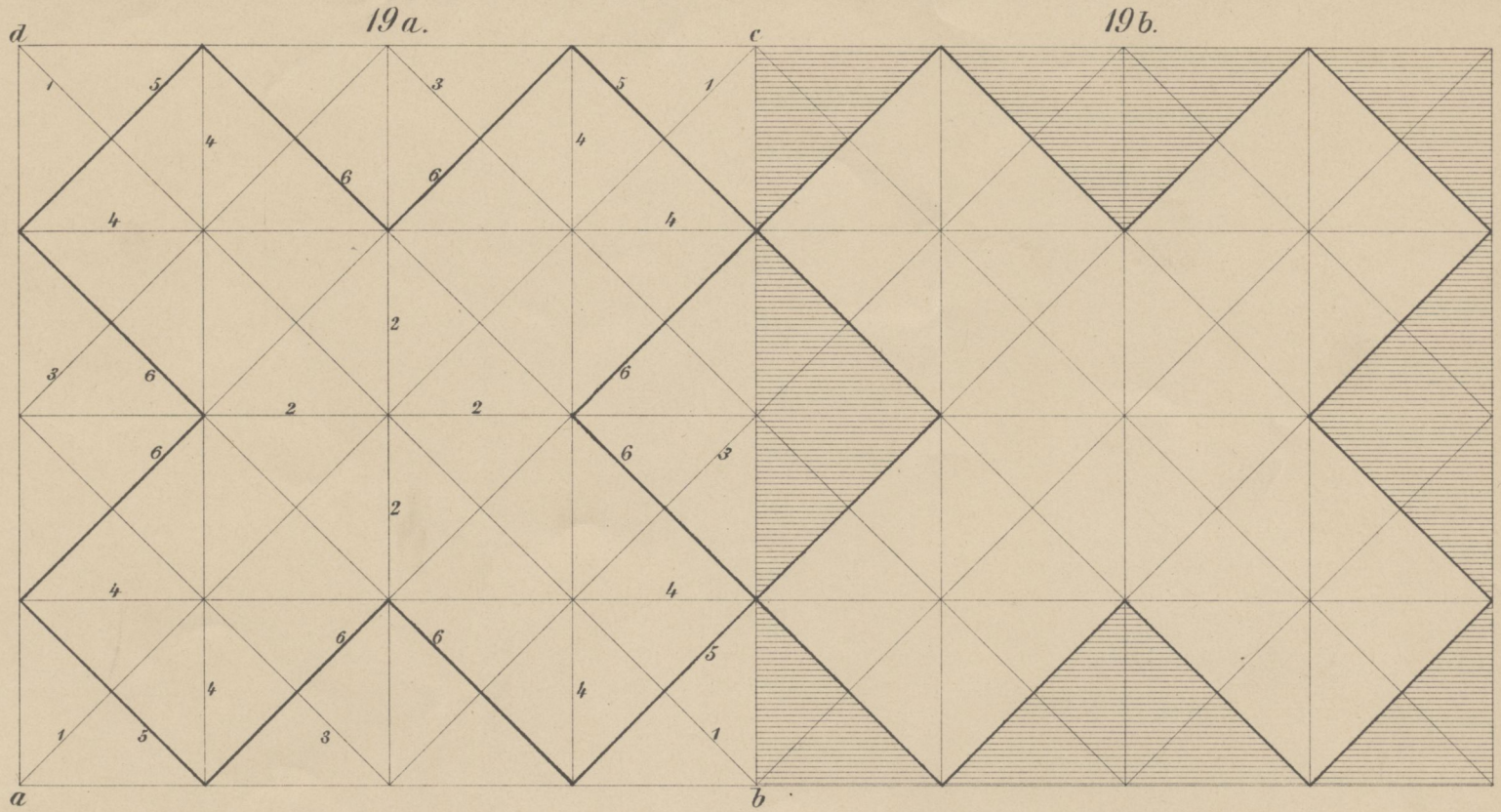
BIBLIOTEKA  
Państwowej Szkoły Przemysłowej  
w Krakowie





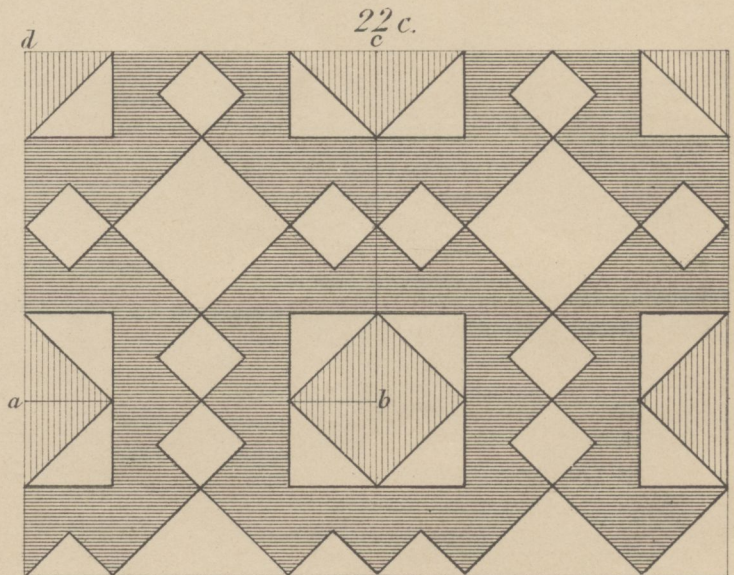
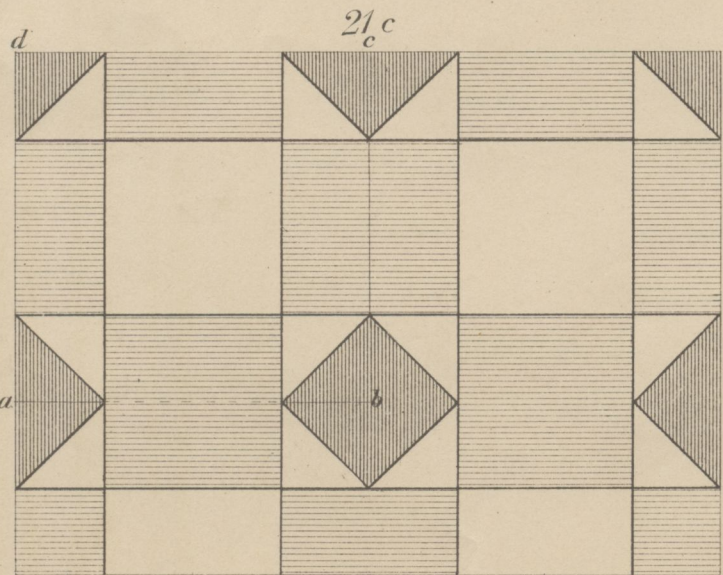
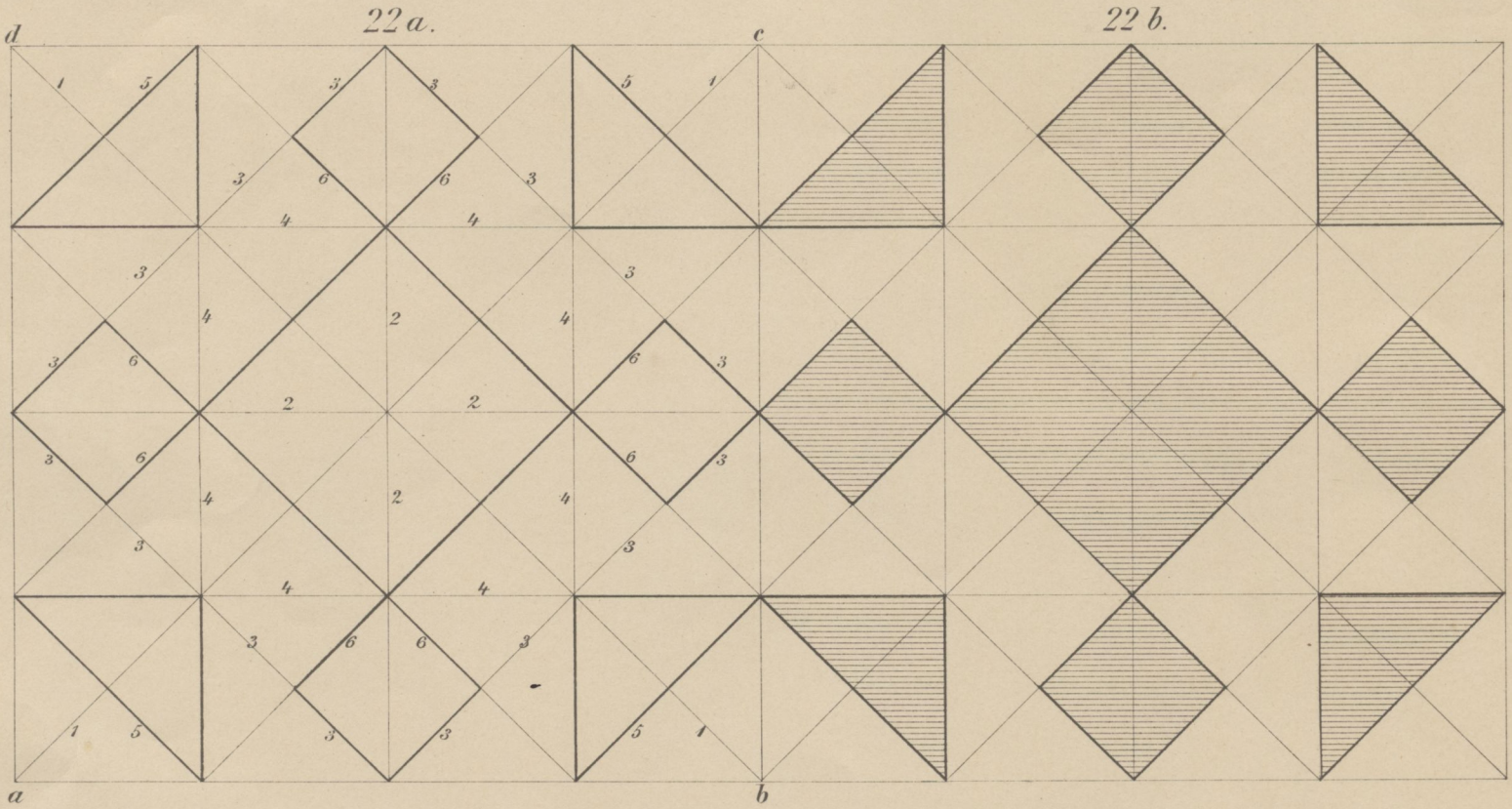
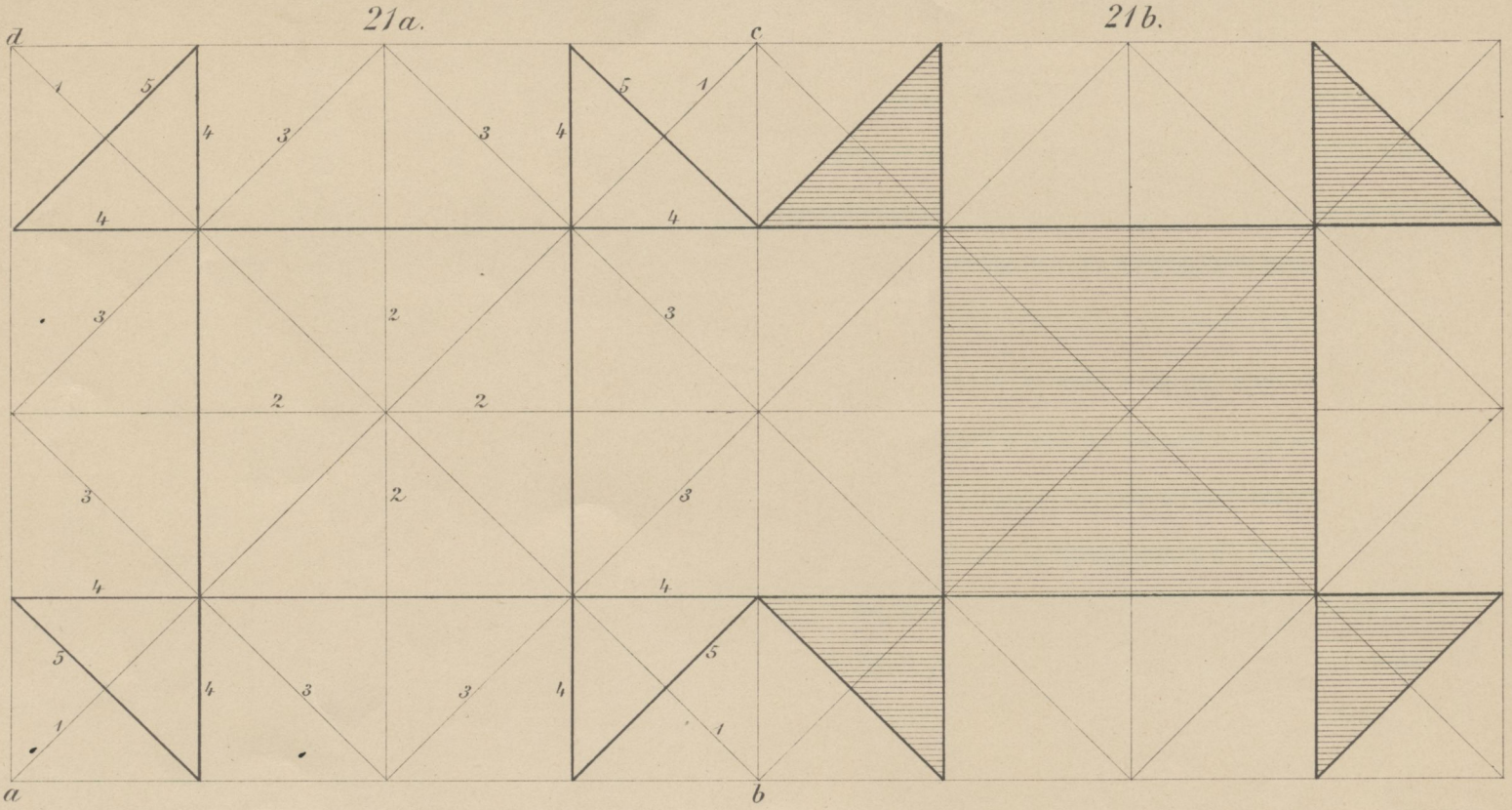
7251

BIBLIOTEKA  
Państwowej Szkoły Przemysłowej  
w Krakowie.



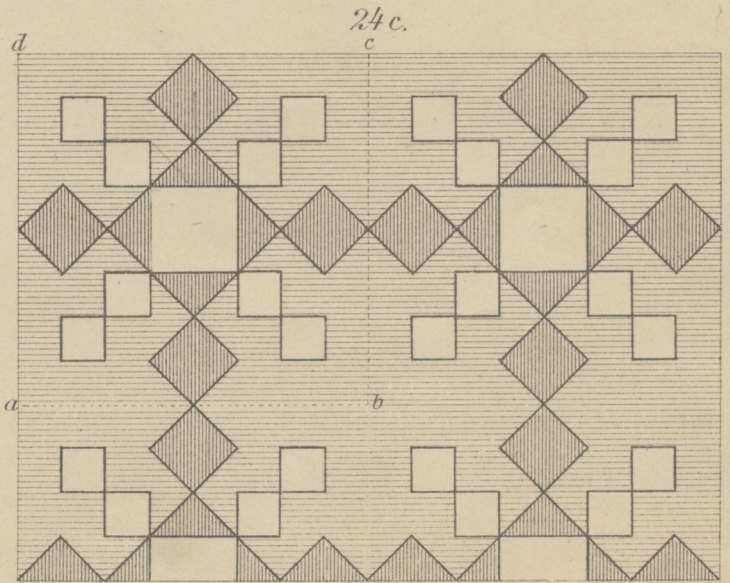
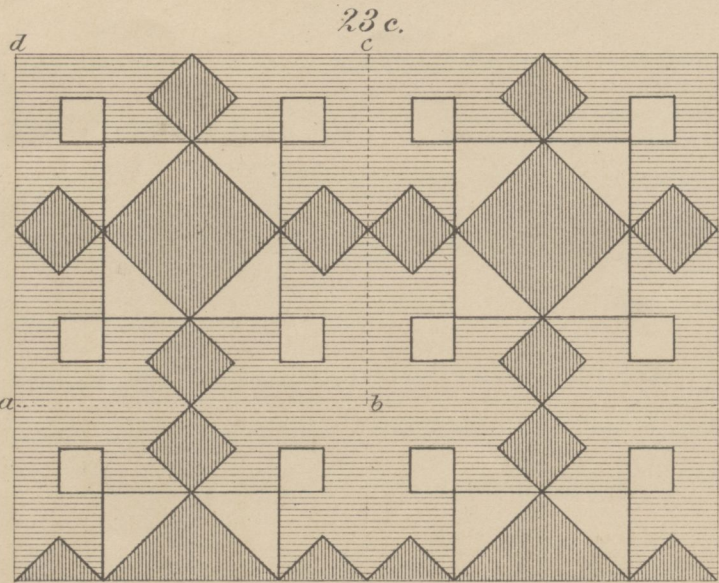
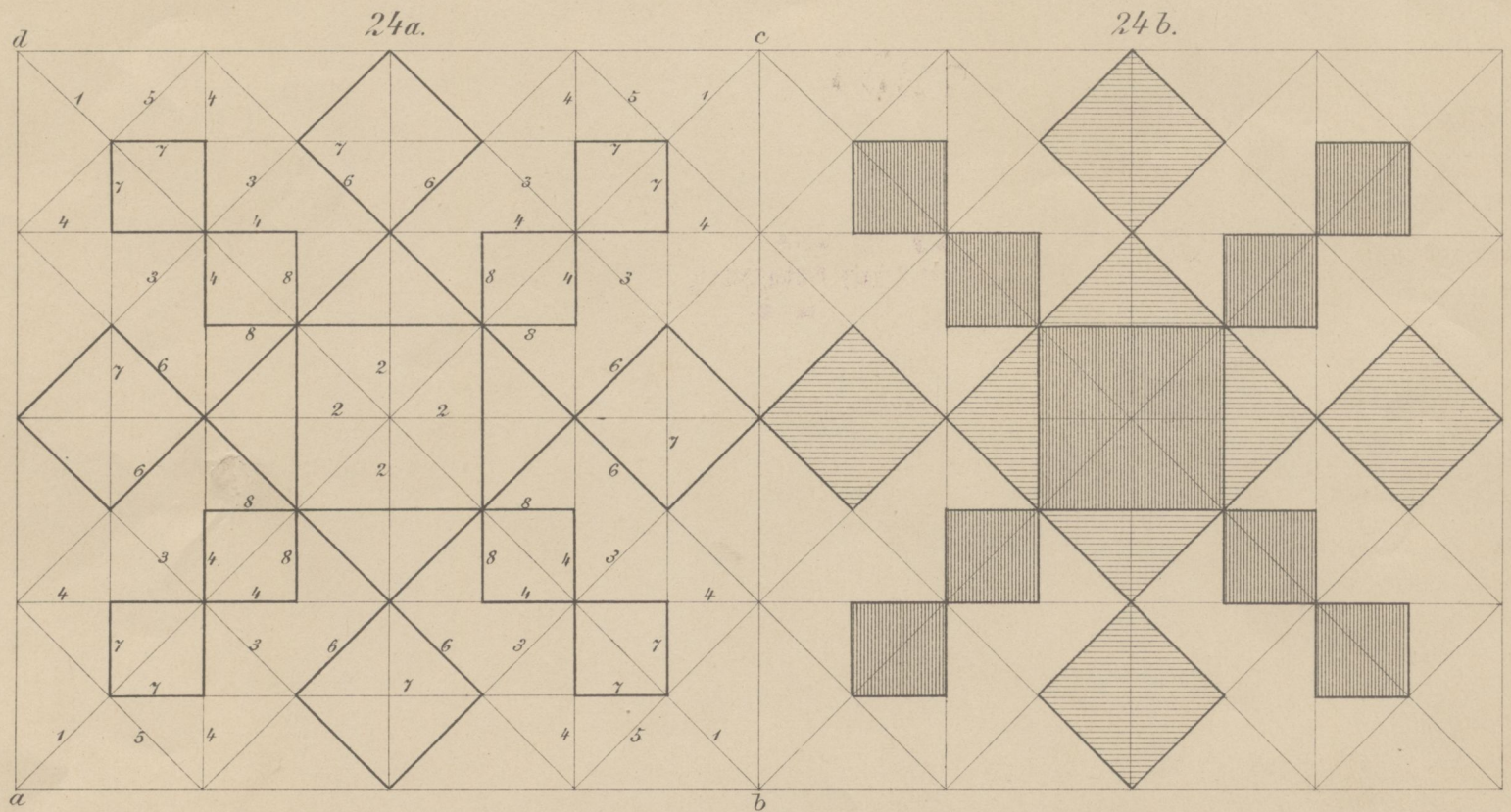
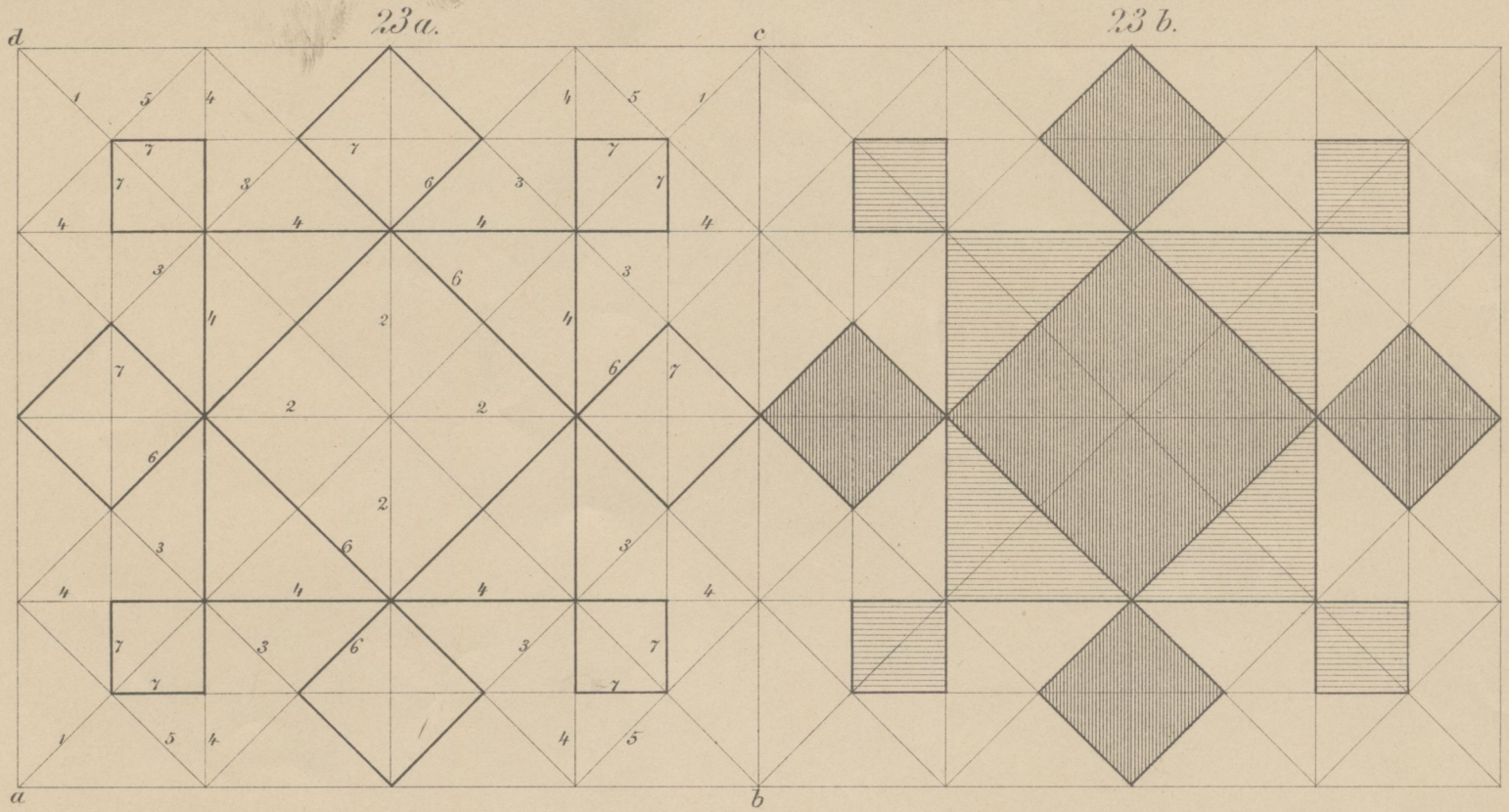
7251

BIBLIOTEKA  
Przemysłowej Szkoły Przemysłowej  
w Krakowie.



7251

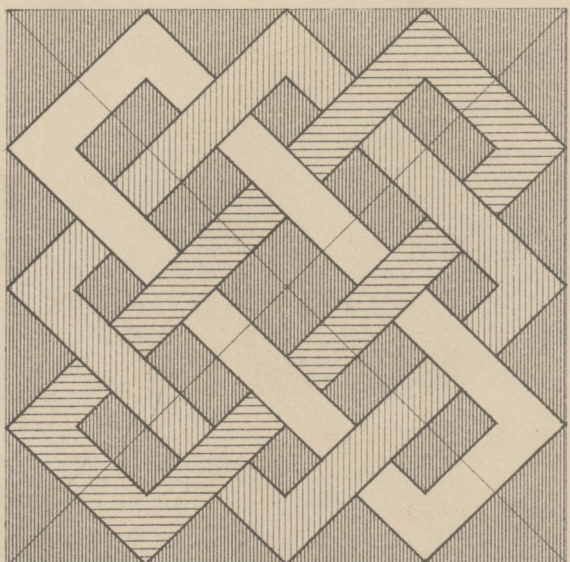
BIBLIOTEKA  
Państwowej Szkoły Przemysłowej  
w Krakowie.



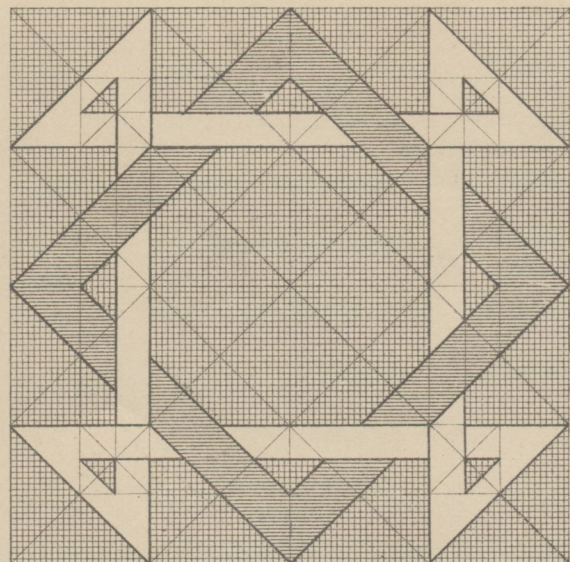
7251

**BIBLIOTEKA**  
**Państwowej Szkoły Przemysłowej**  
**w Krakowie.**

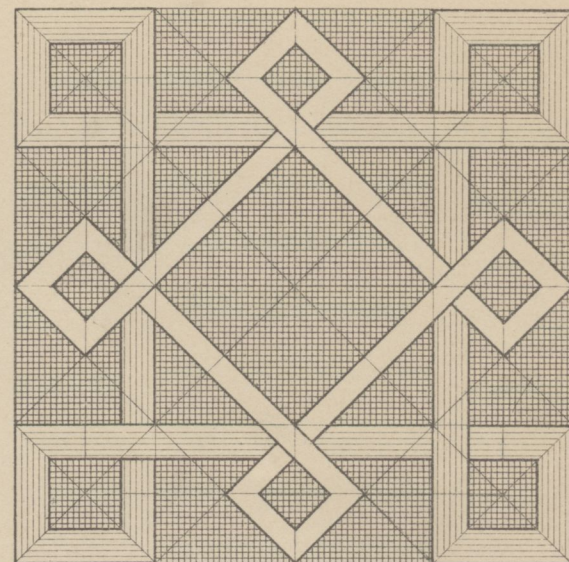




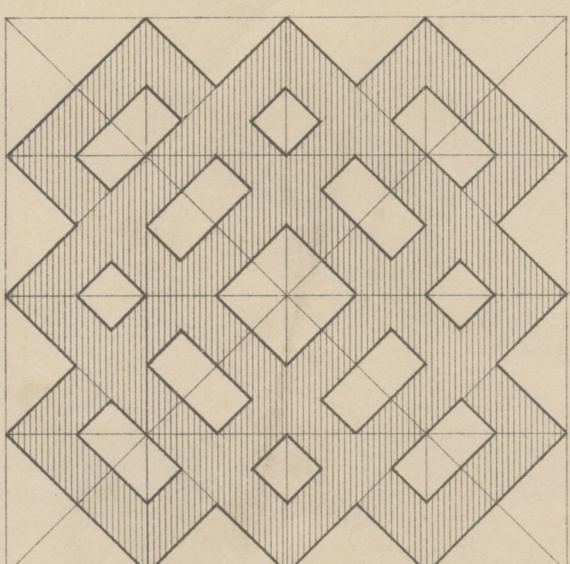
25c.



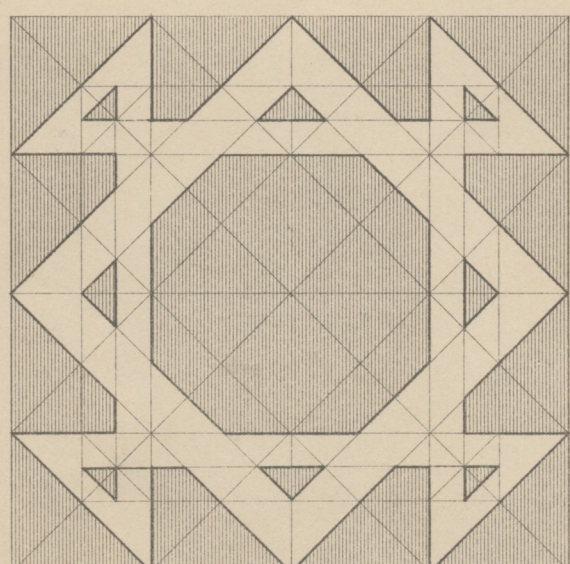
26c.



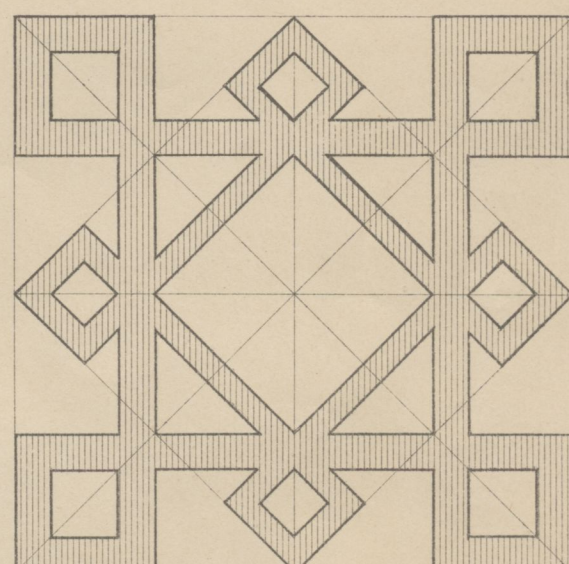
27c.



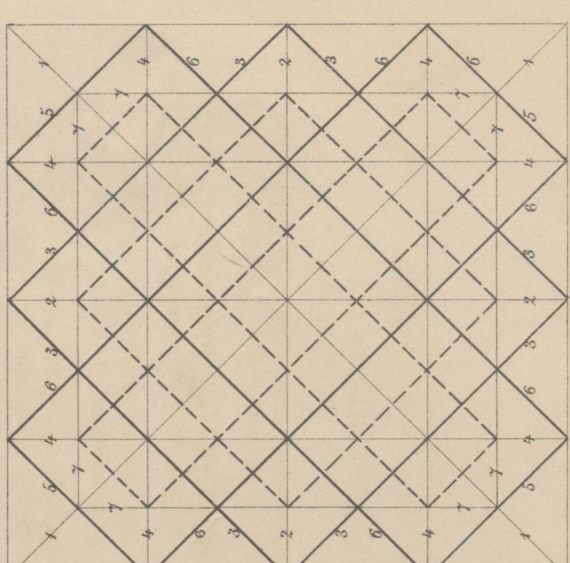
25b.



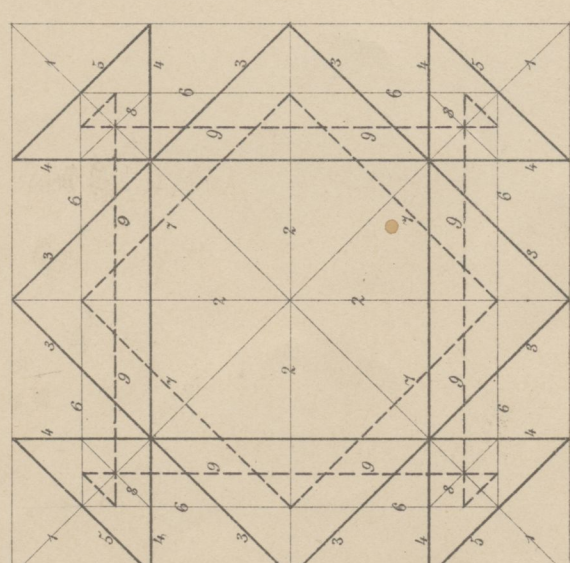
26b.



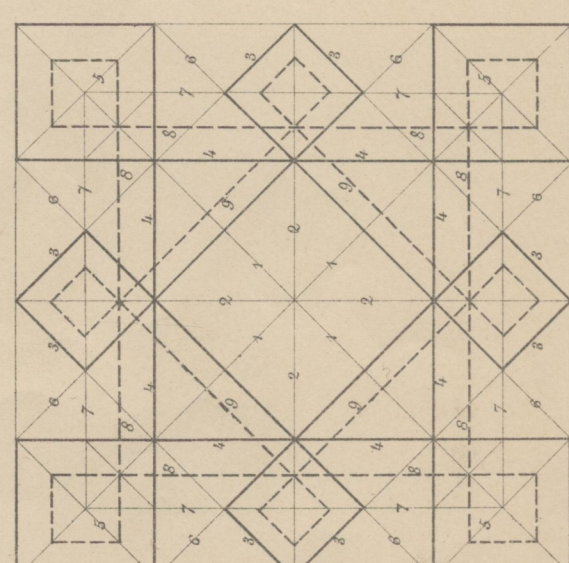
27b.



25a.



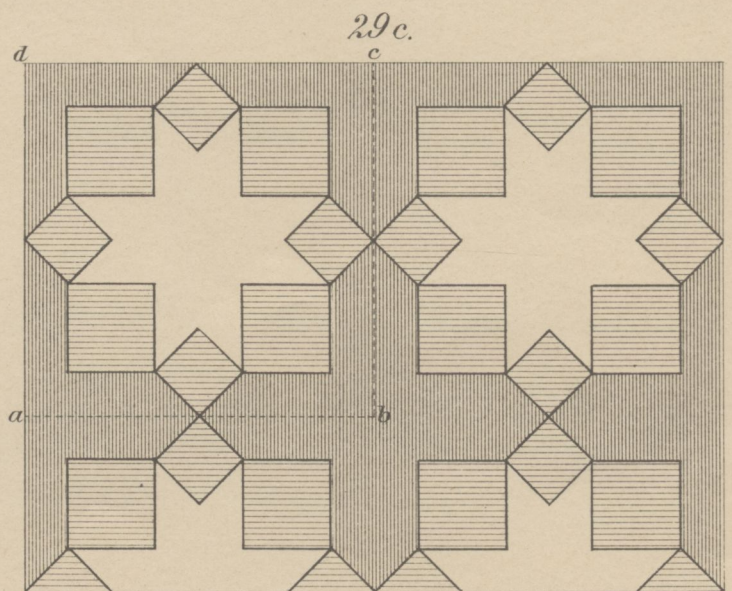
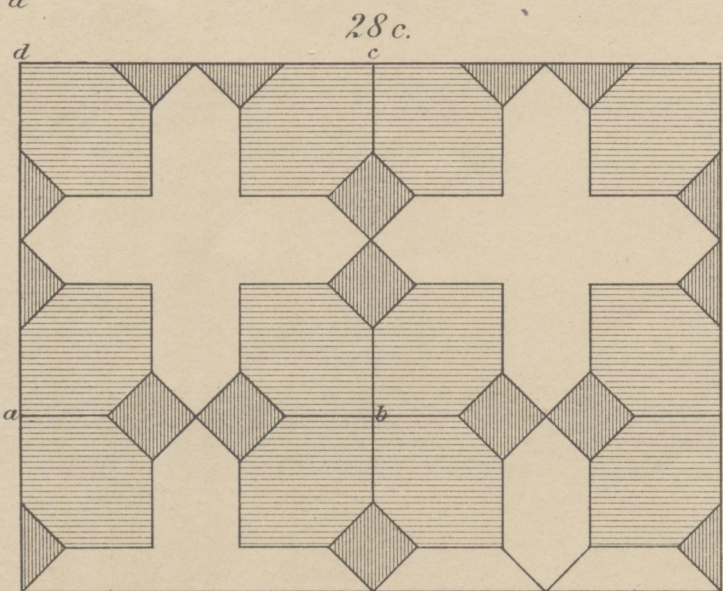
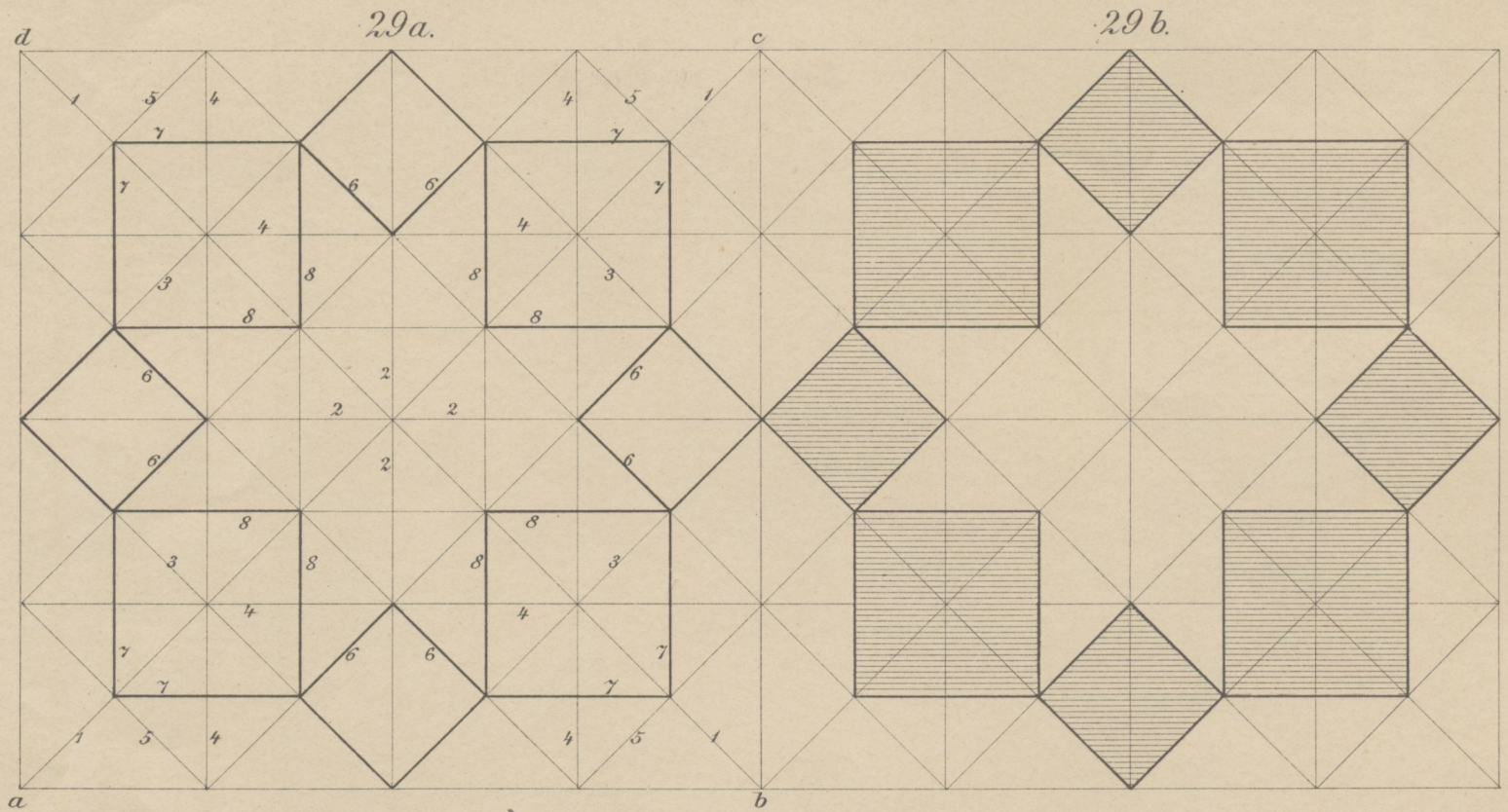
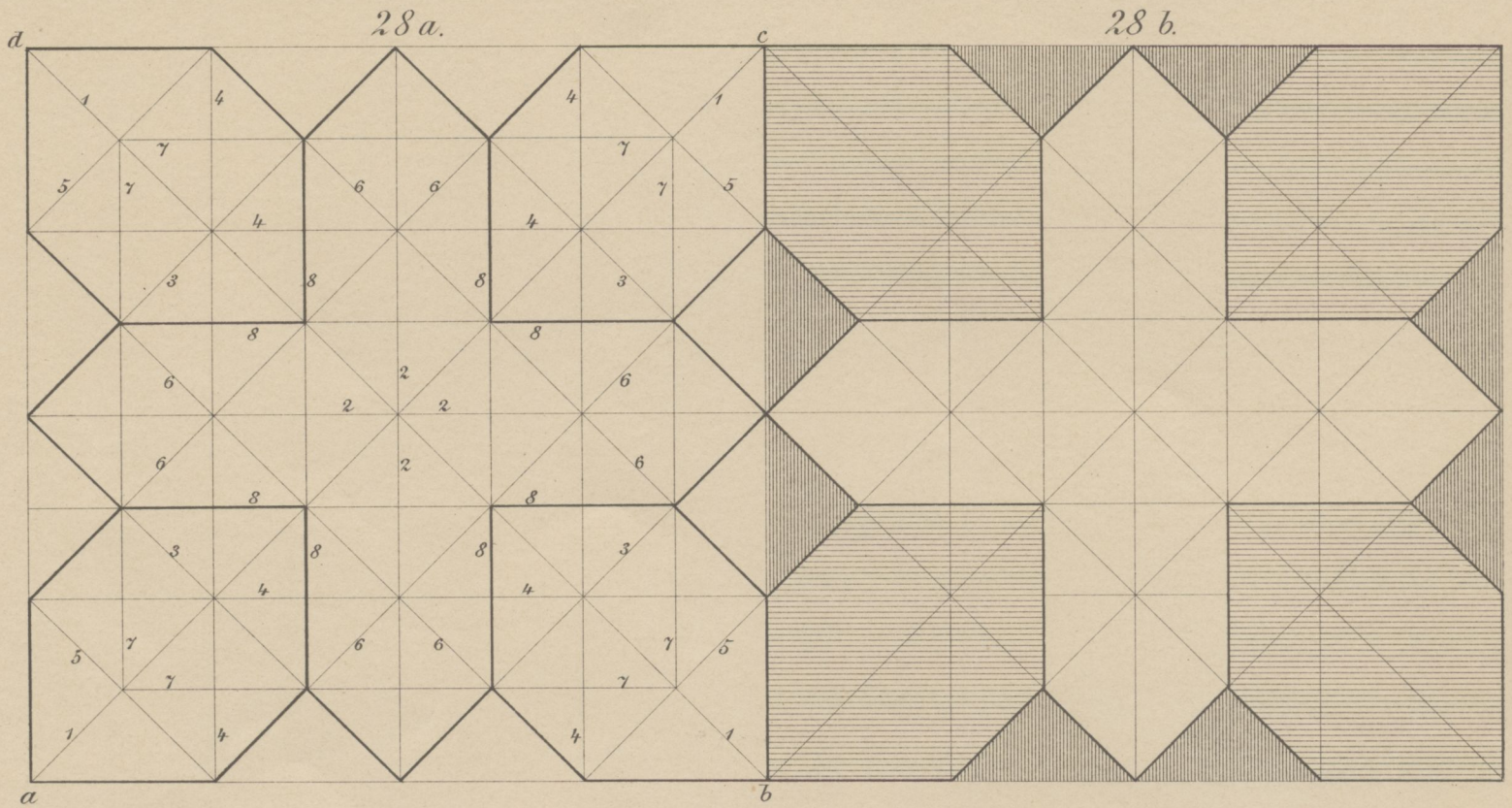
26a.



27a.

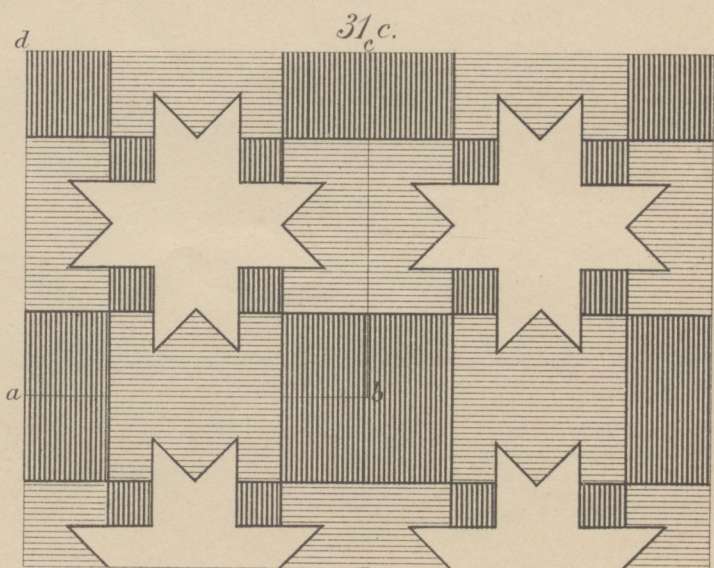
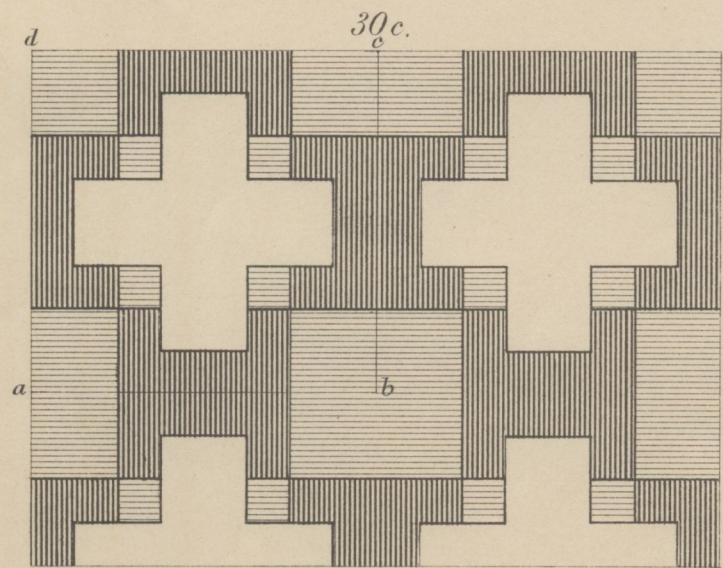
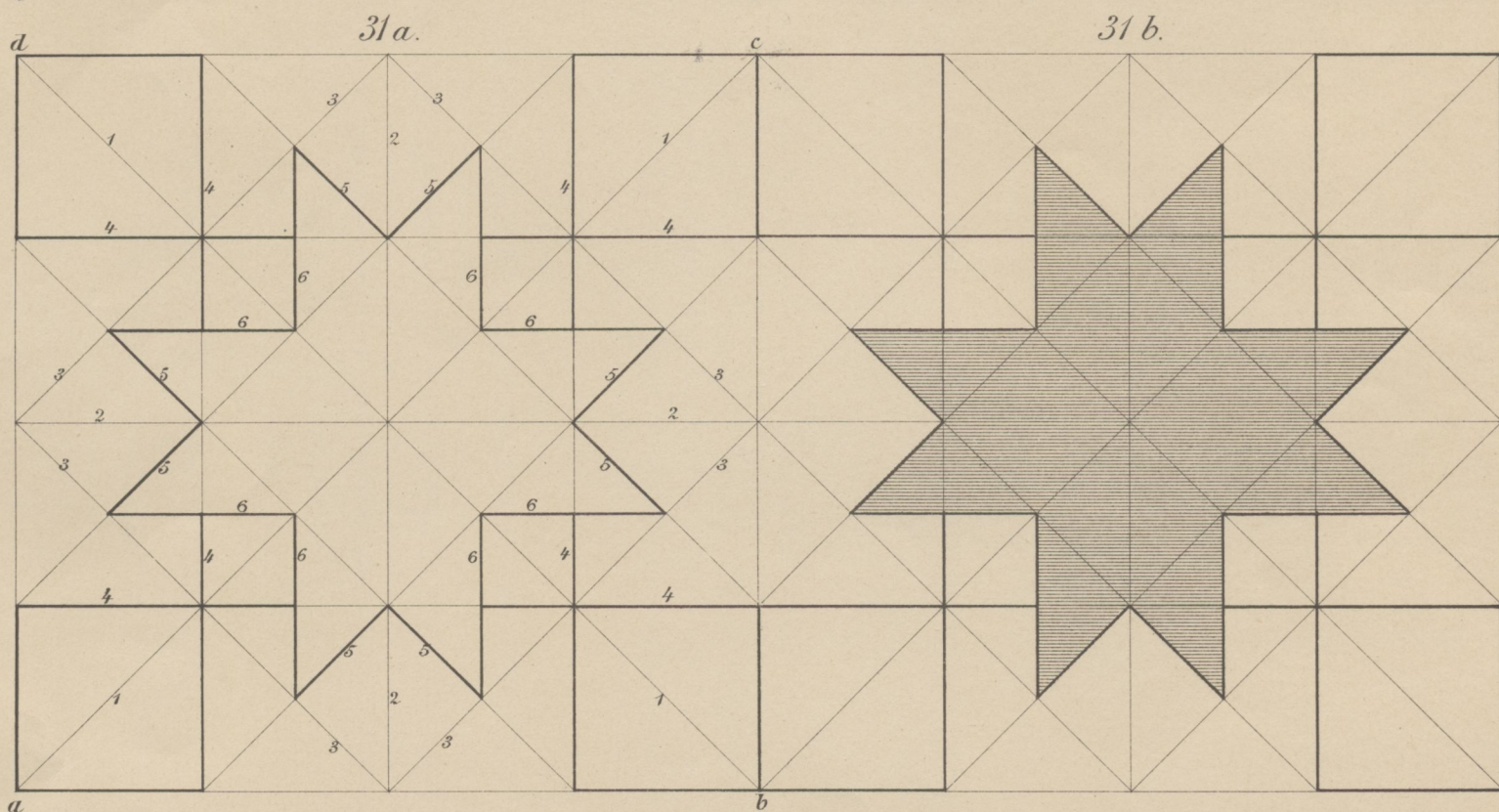
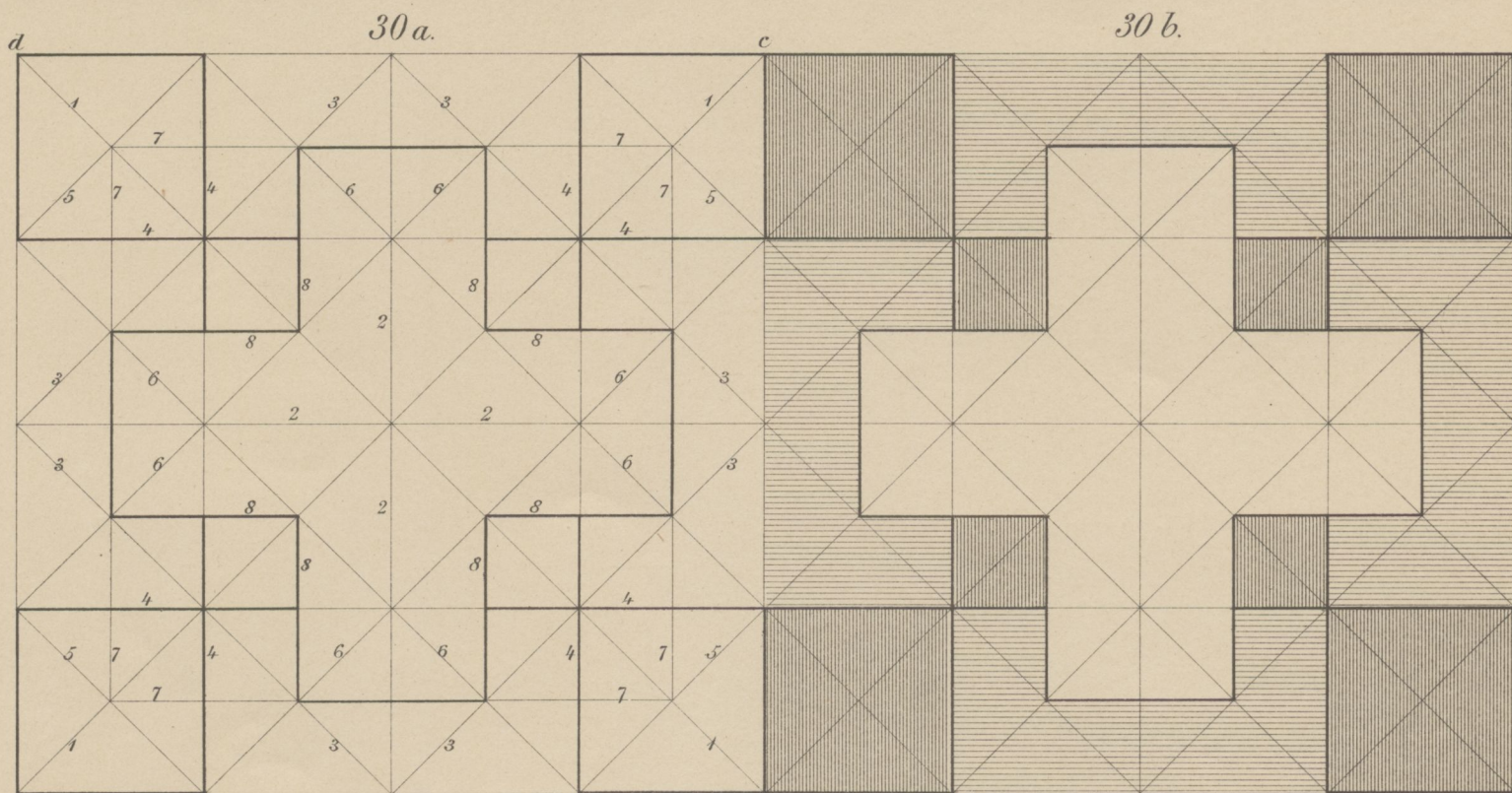
7251

**BIBLIOTEKA**  
**Państwowej Szkoły Przemysłowej**  
**w Krakowie.**



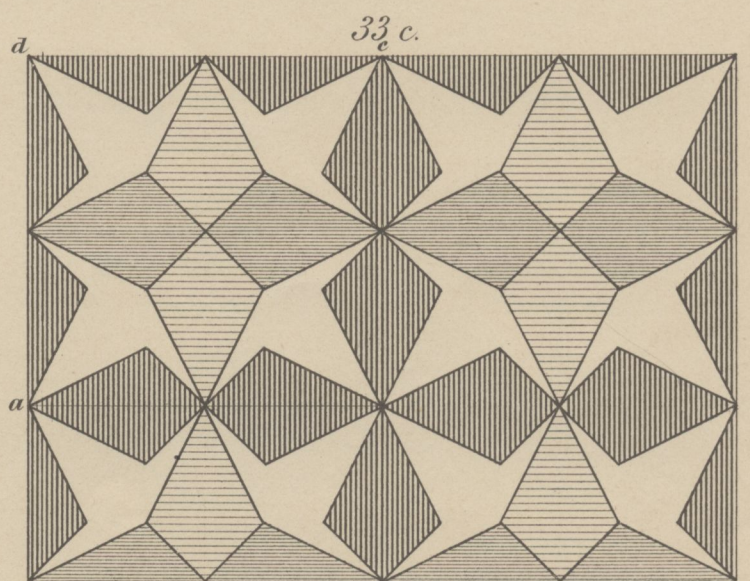
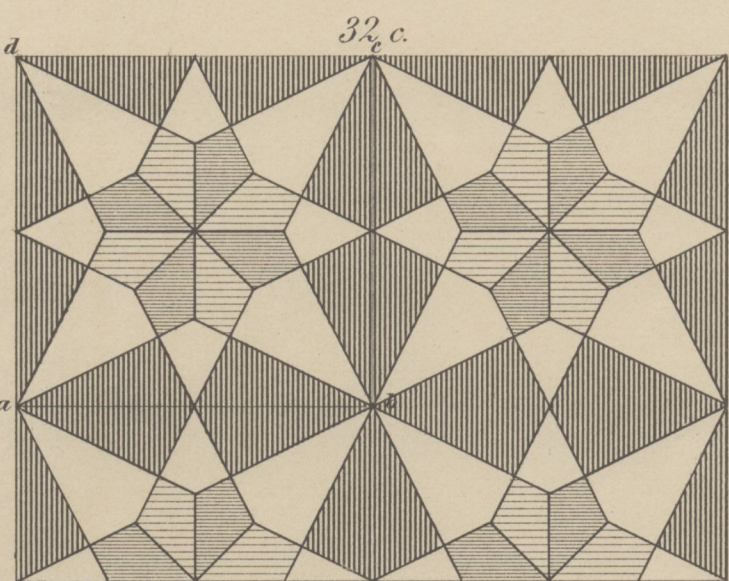
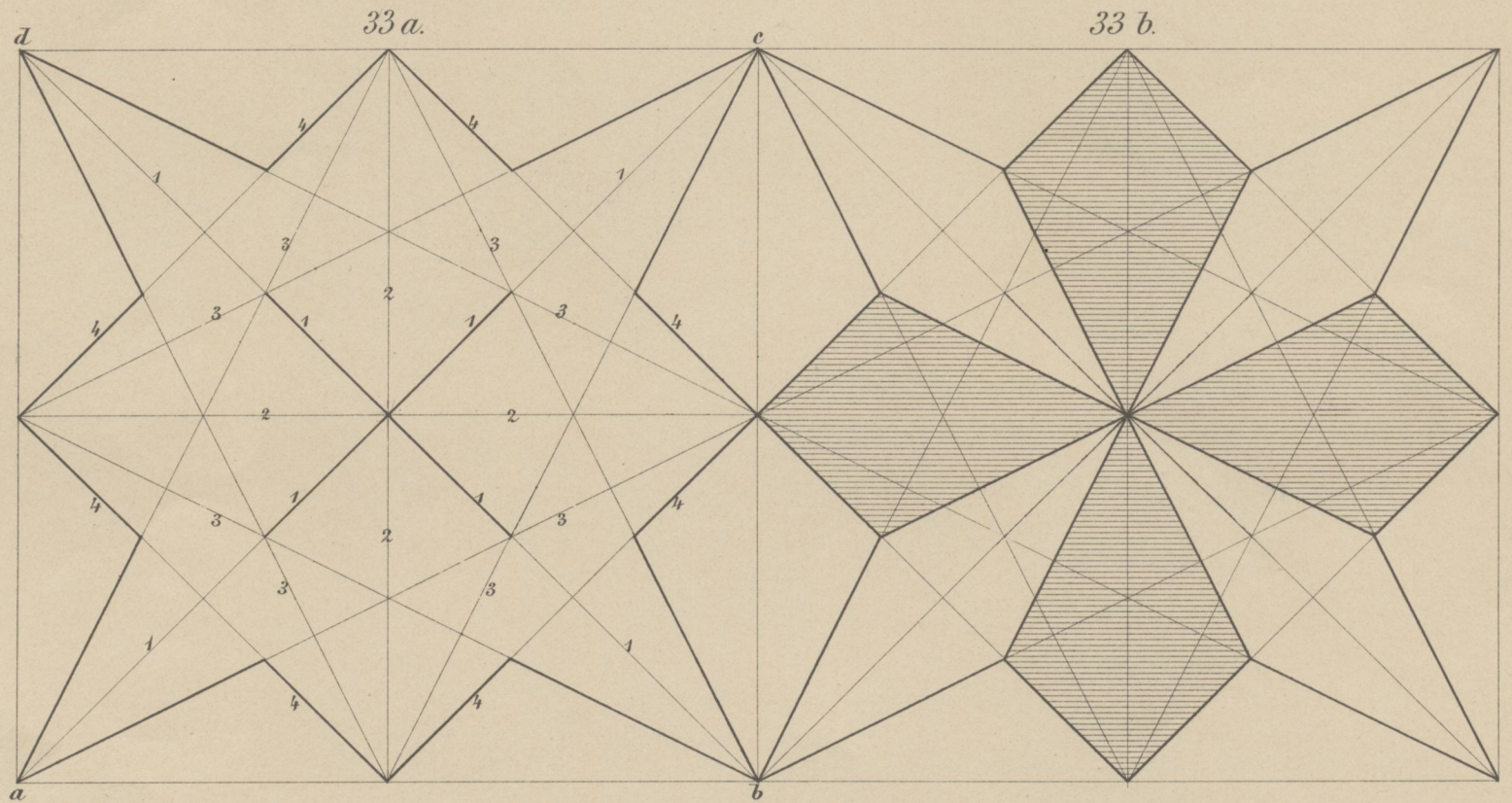
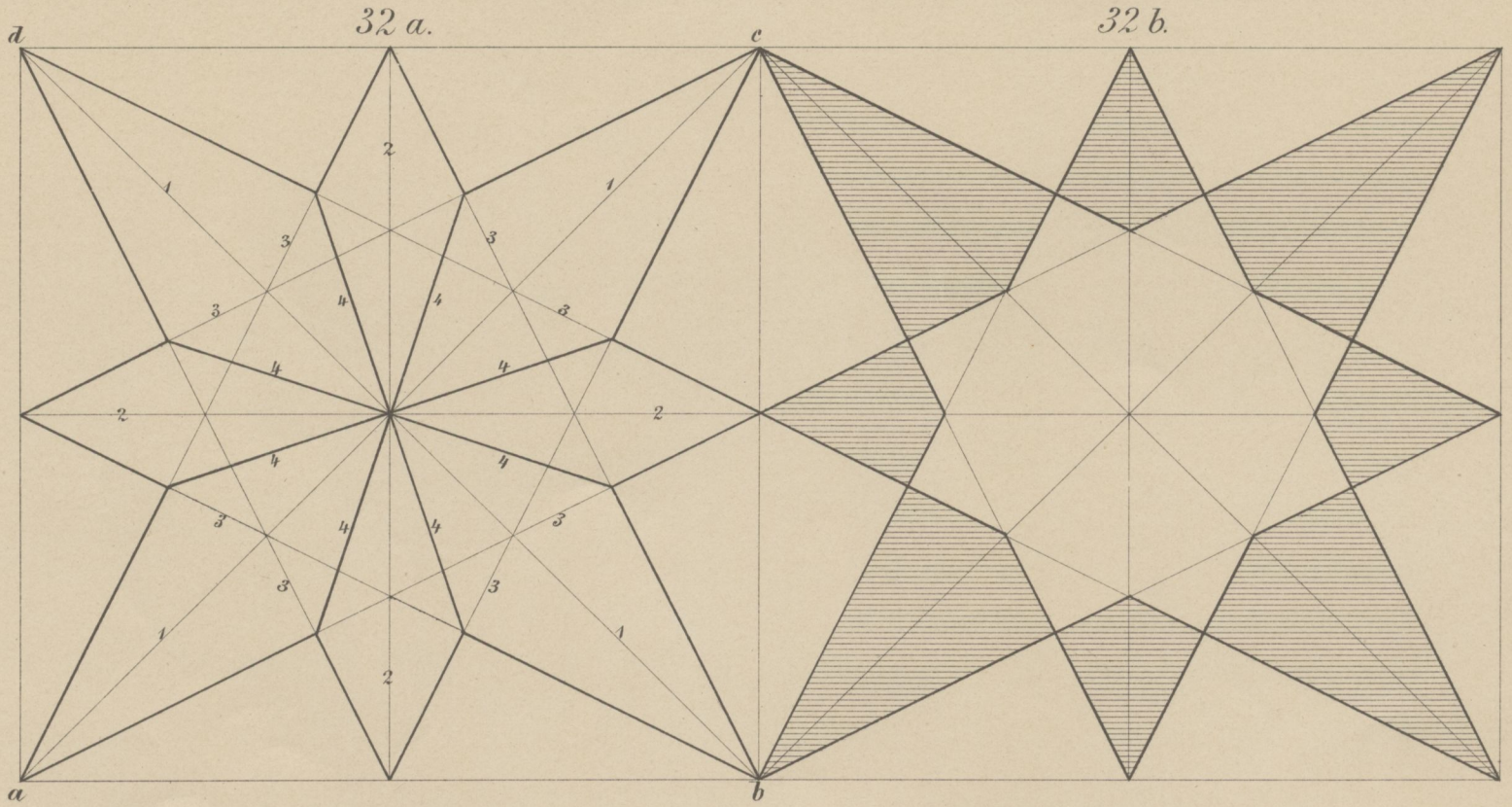
7251

BIBLIOTEKA  
Państwowej Szkoły Przemysłowej  
w Krakowie.



7251

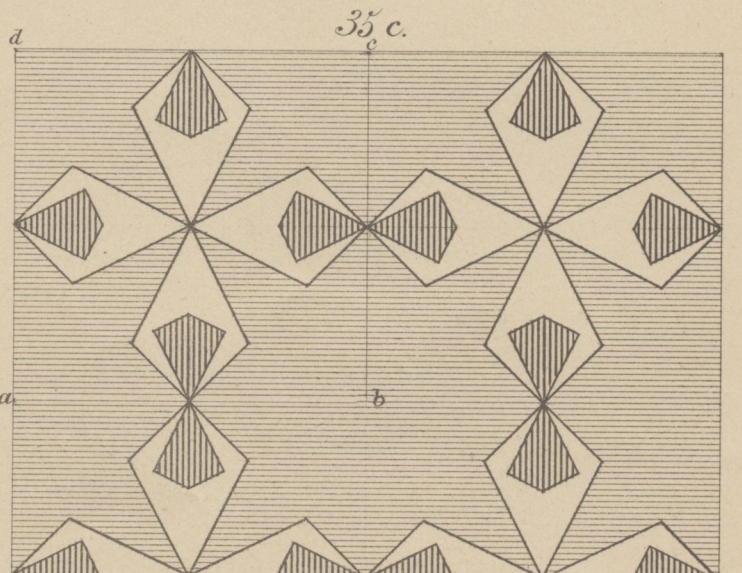
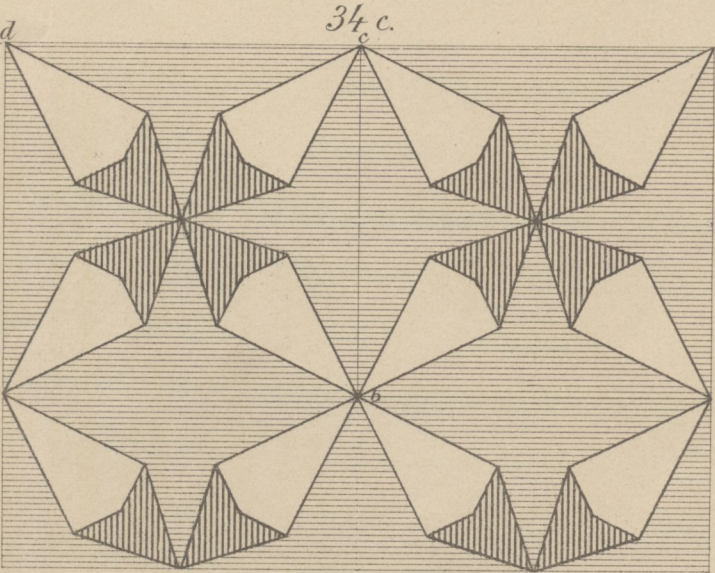
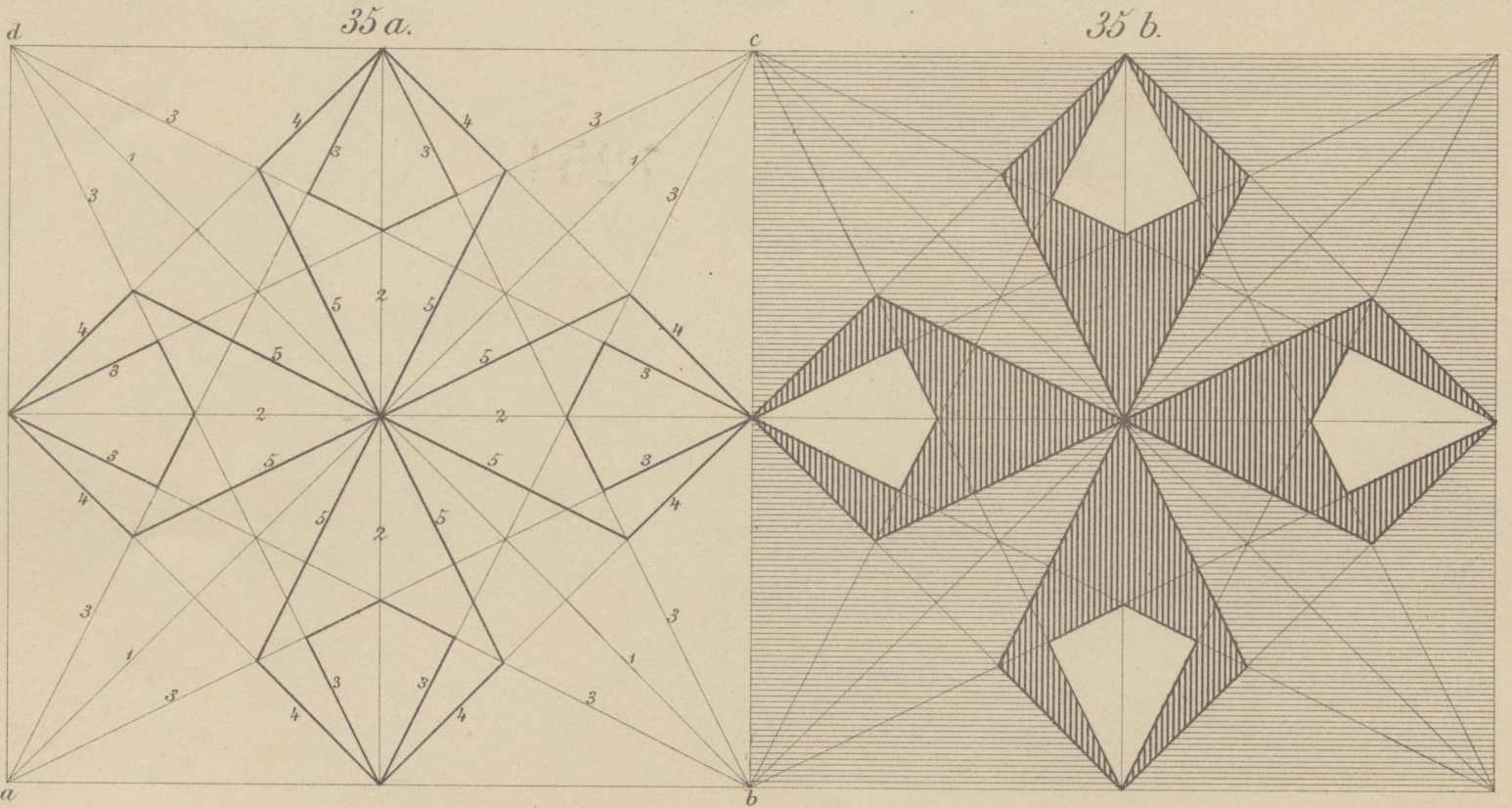
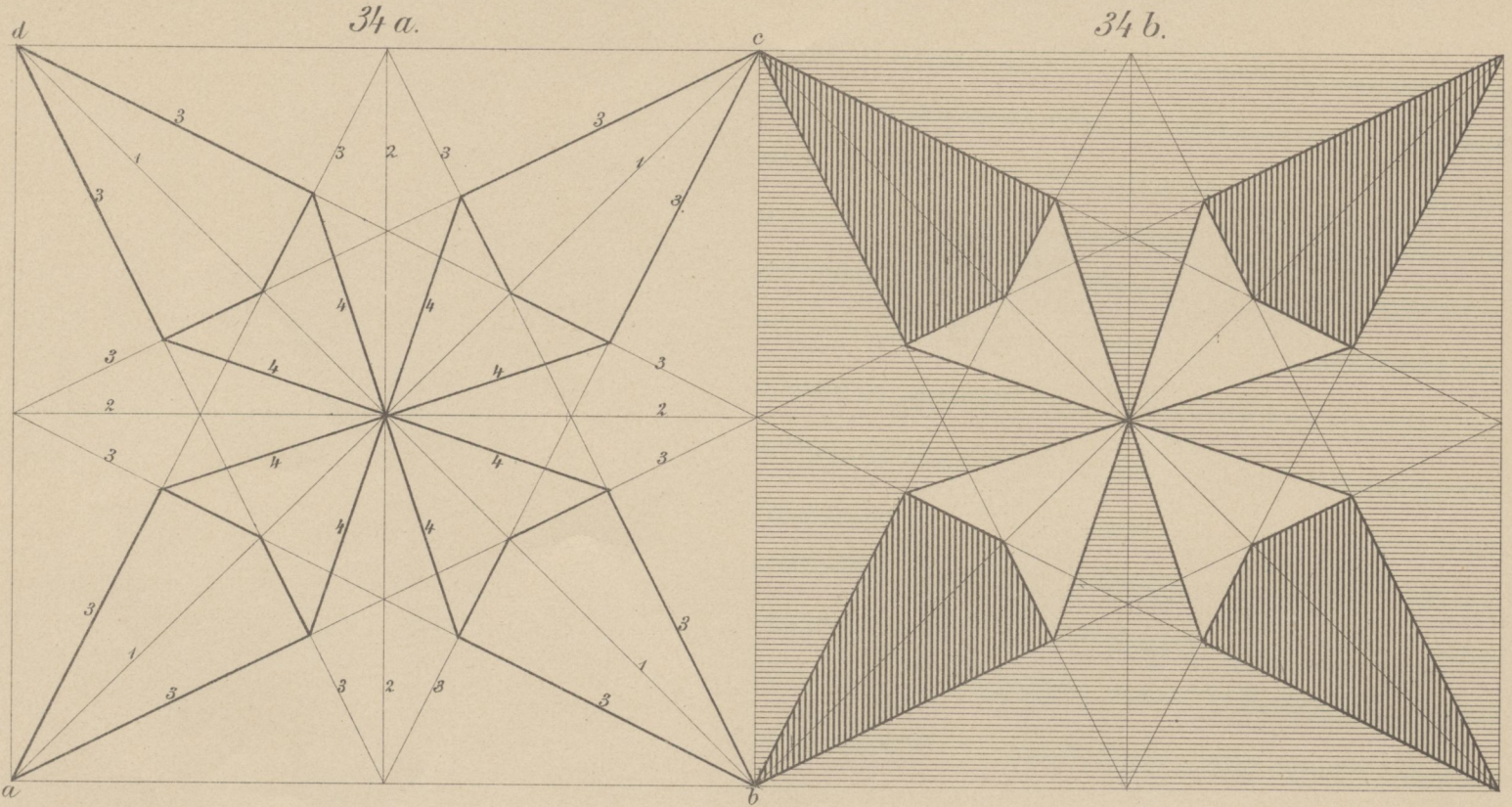
BIBLIOTEKA  
Państwowej Szkoły Przemysłowej  
w Krakowie.



7251

BIBLIOTEKA  
Państwowej Szkoły Przemysłowej  
w Krakowie.

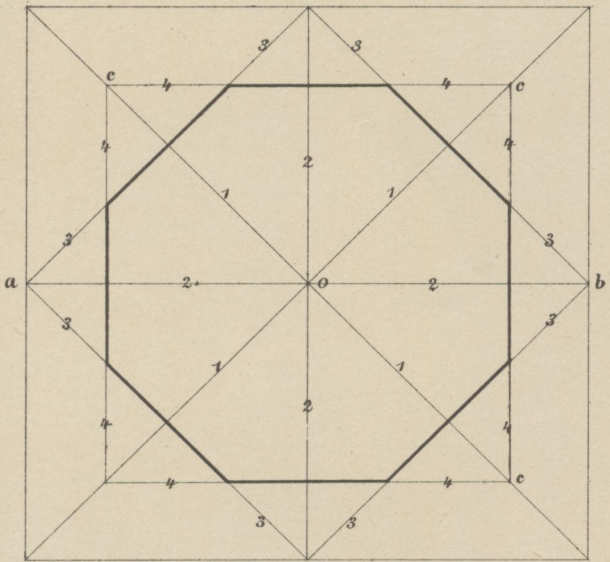




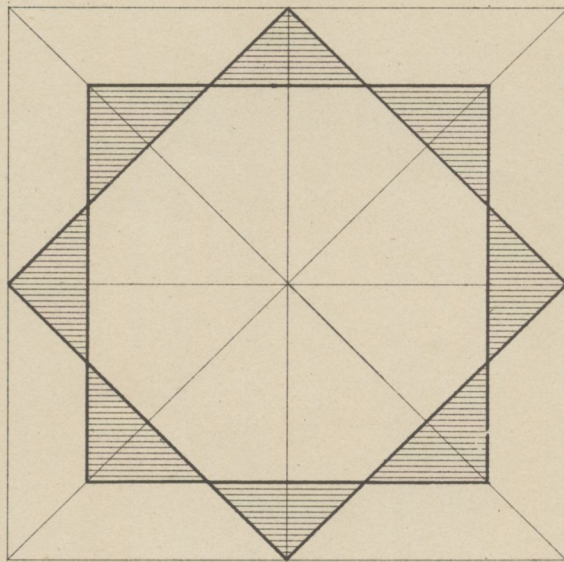
7251

BIBLIOTEKA  
Pracowni Szkoły Przemysłowej  
w Krakowie.

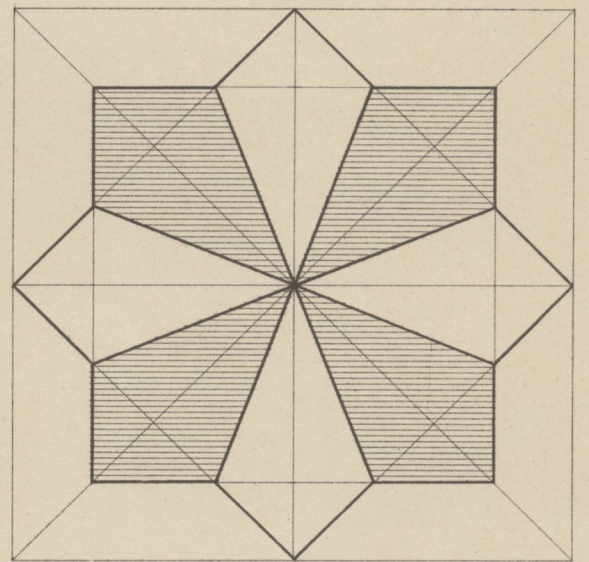
36.



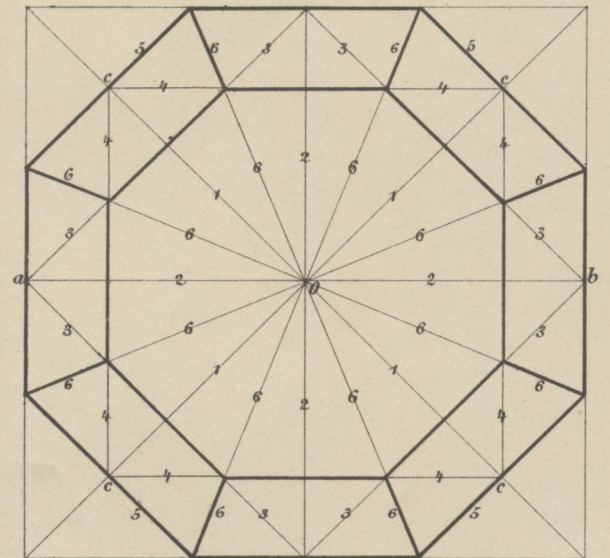
37.



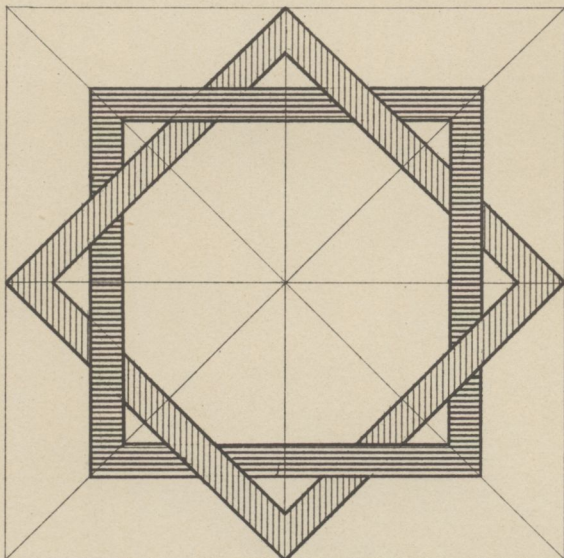
38.



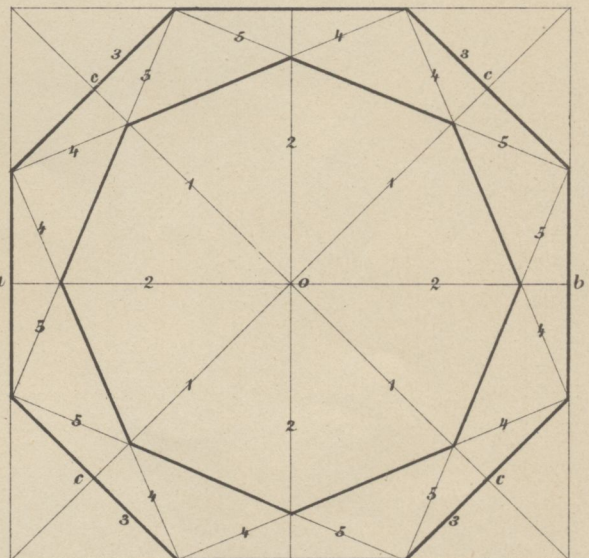
40.



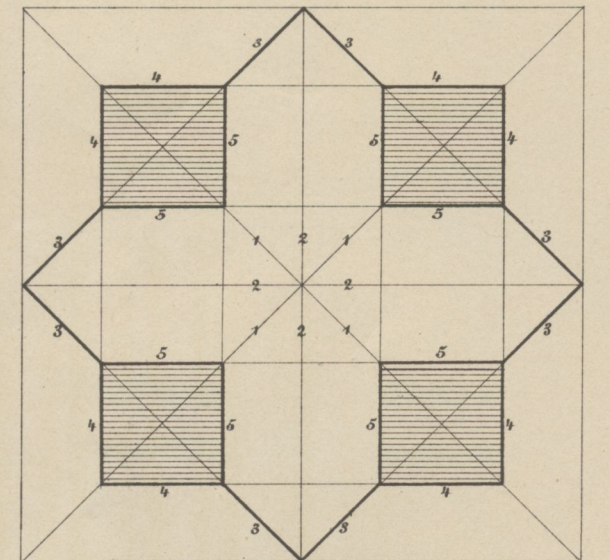
39.



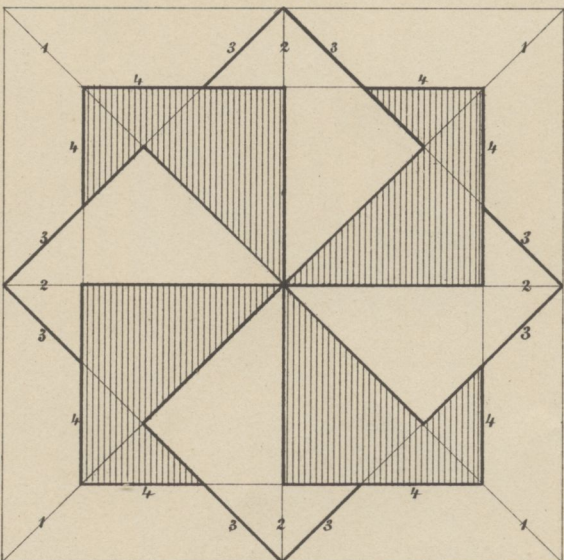
41.



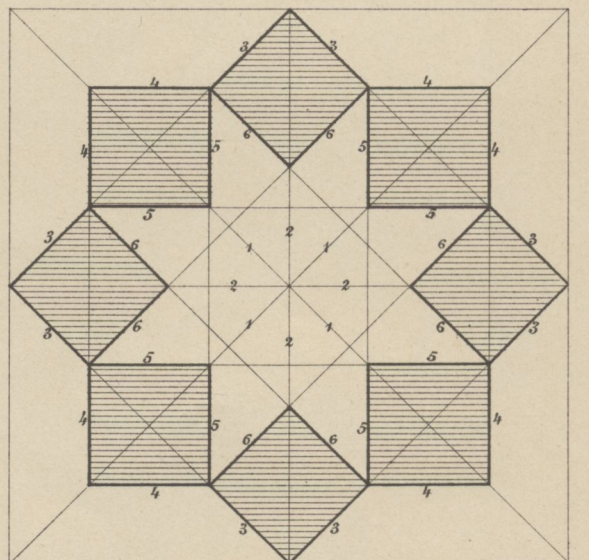
42.



44.

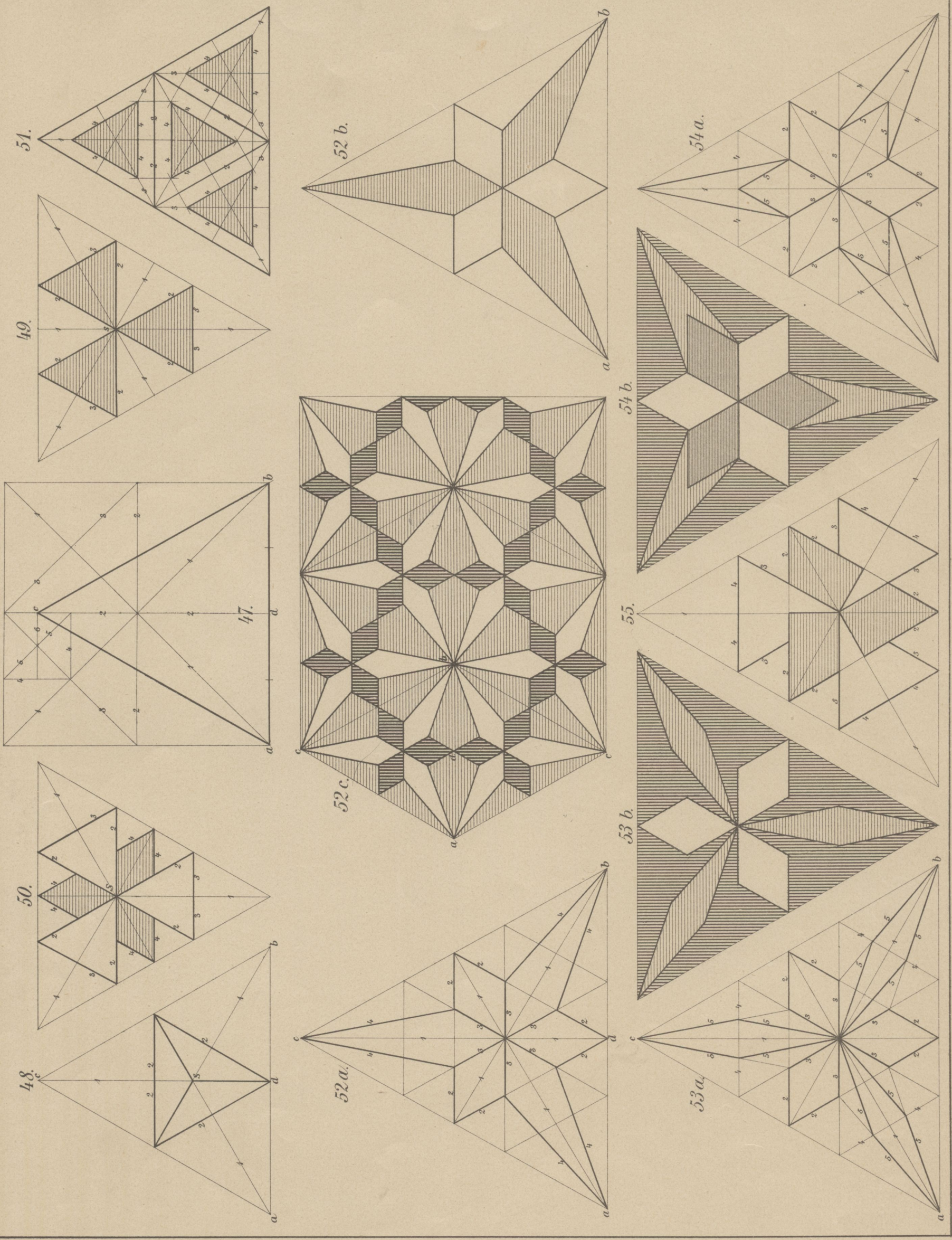


43.



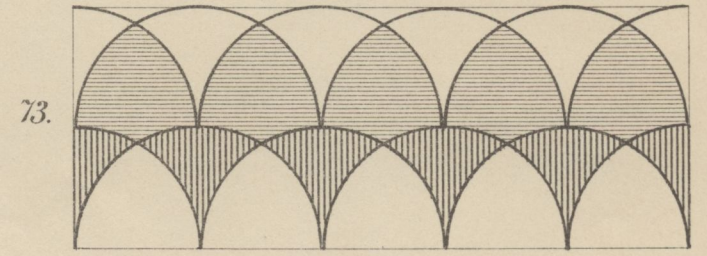
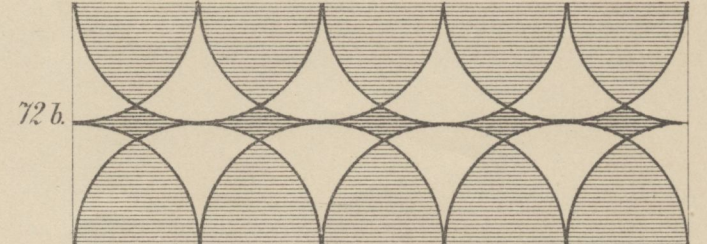
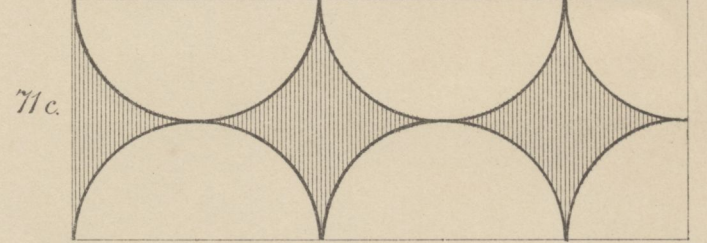
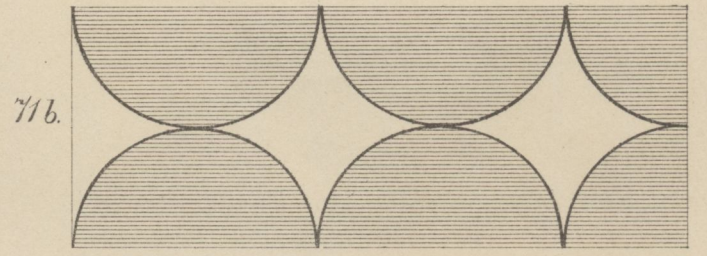
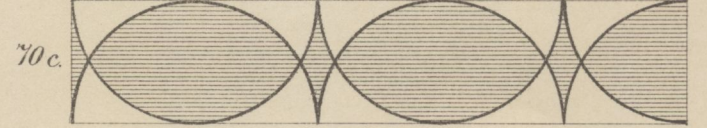
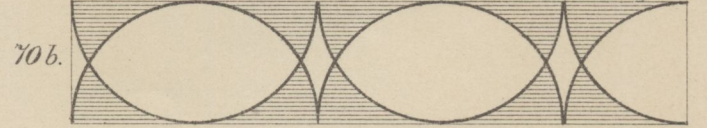
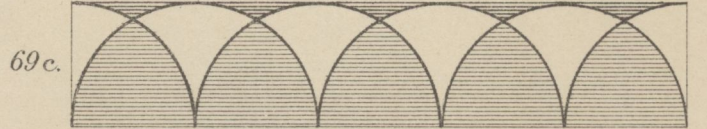
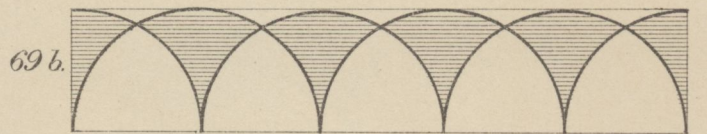
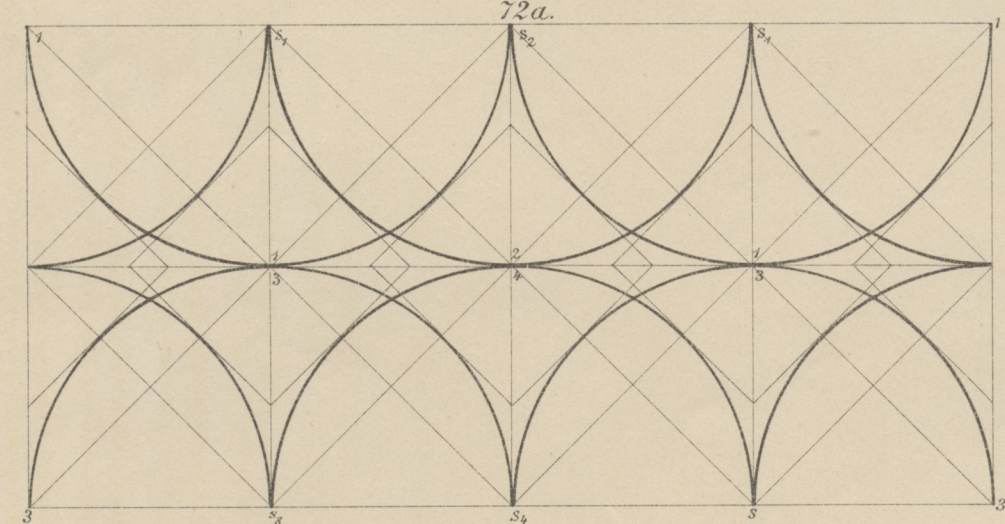
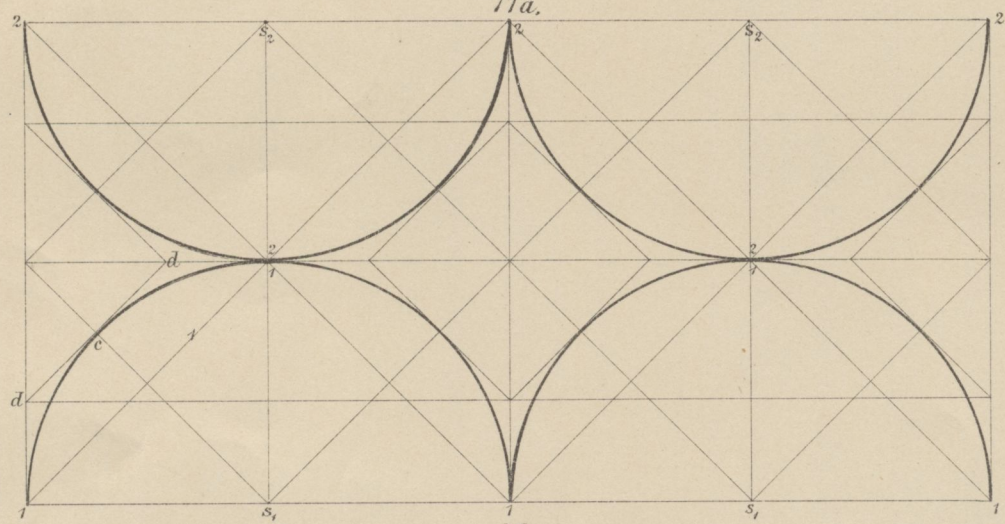
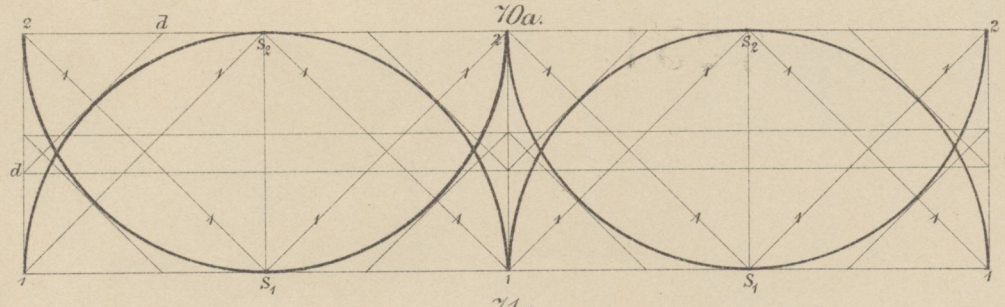
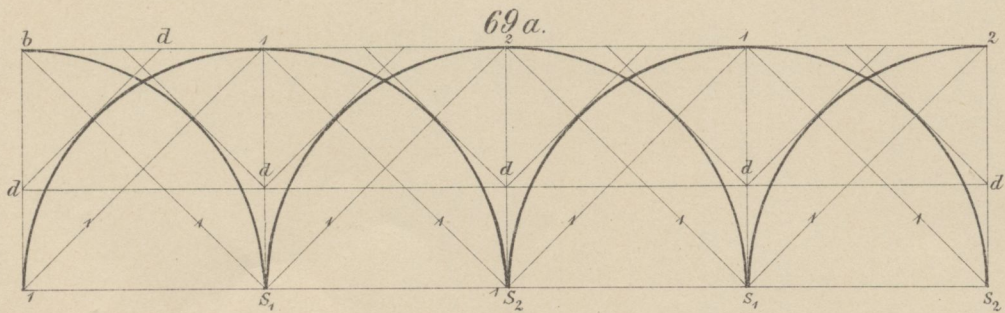
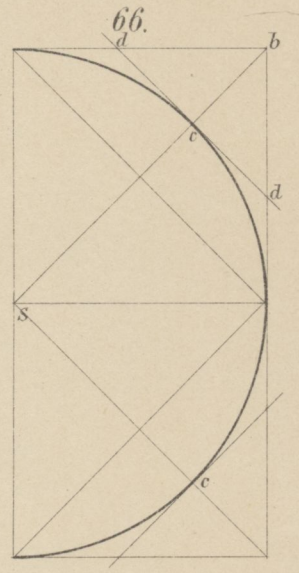
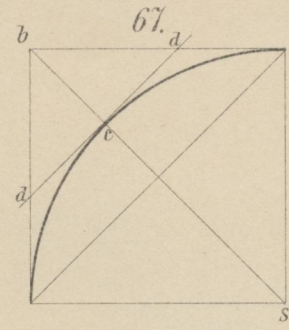
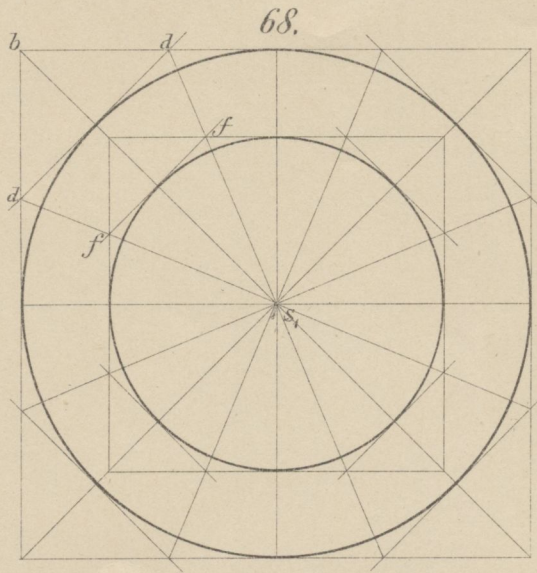
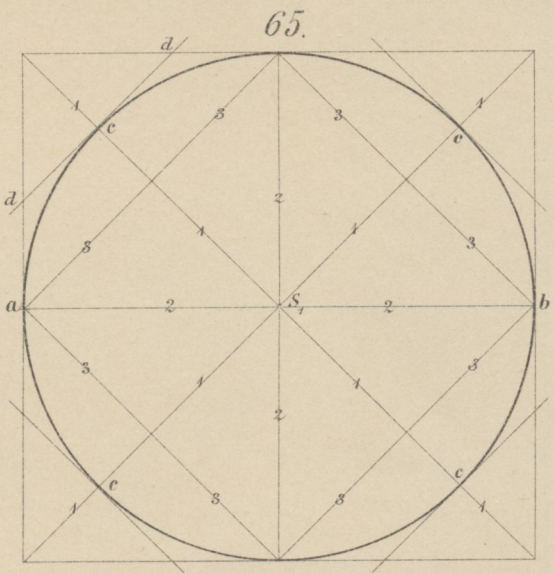
7251

BIBLIOTEKA  
Państwowej Szkoły Przemysłowej  
w Krakowie.



7251

**BIBLIOTEKA**  
**Państwowej Szkoły Przemysłowej**  
**w Krakowie.**



7251

BIBLIOTEKA  
Państwowej Szkoły Przemysłowej  
w Krakowie.

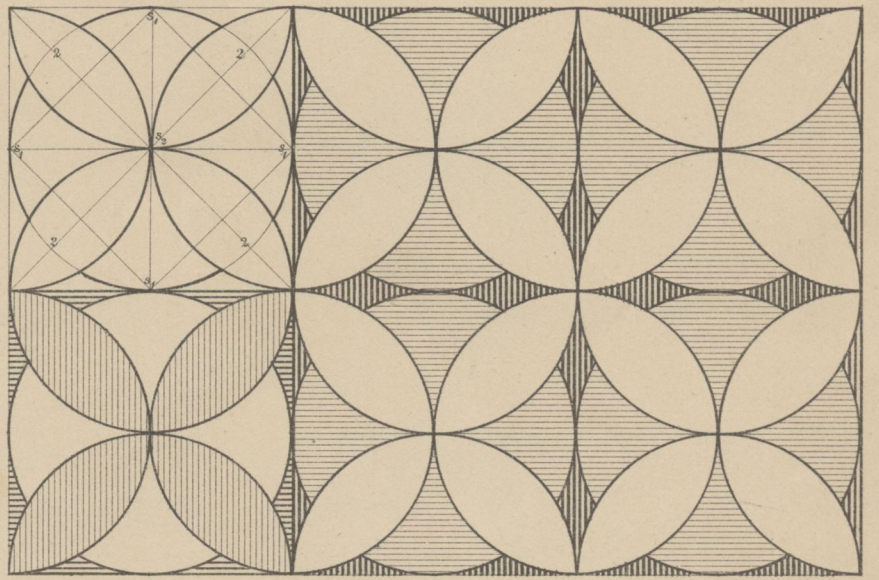
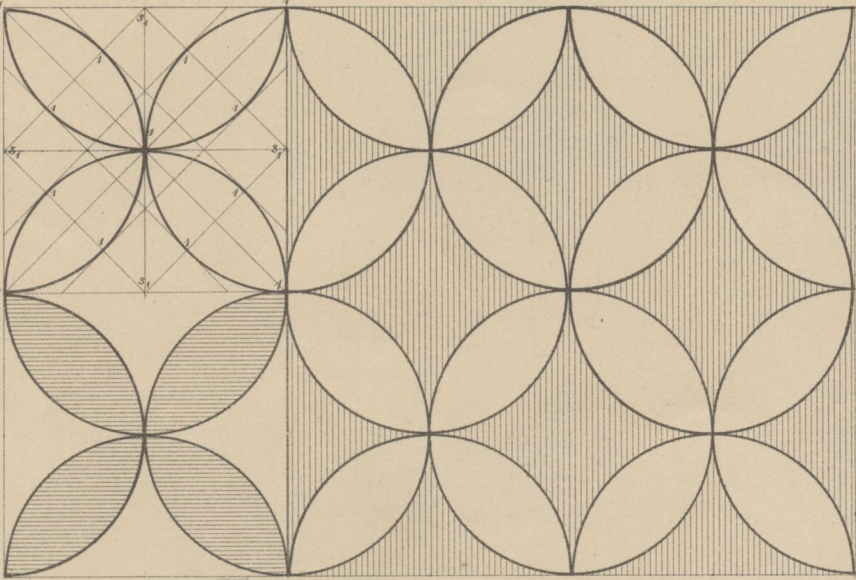


74 ab.

74 c.

75 a, b.

75 c.

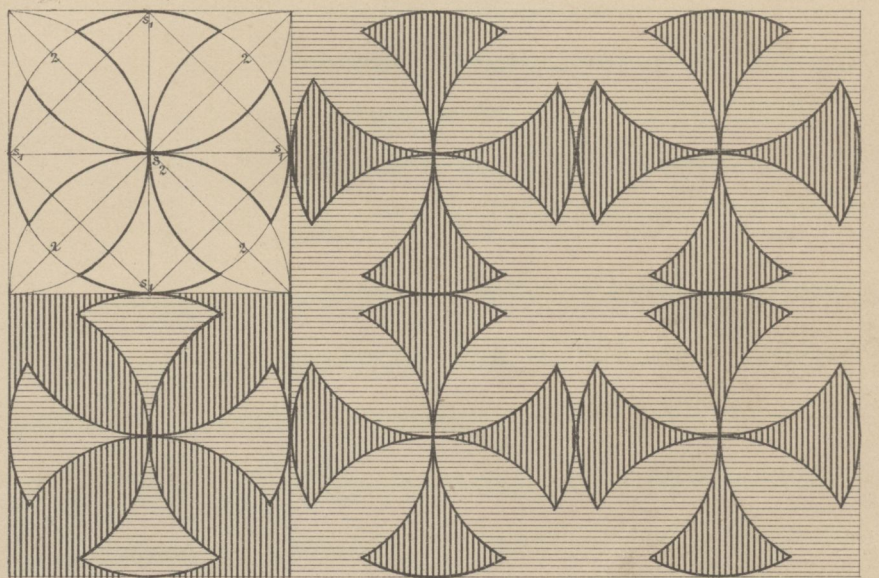
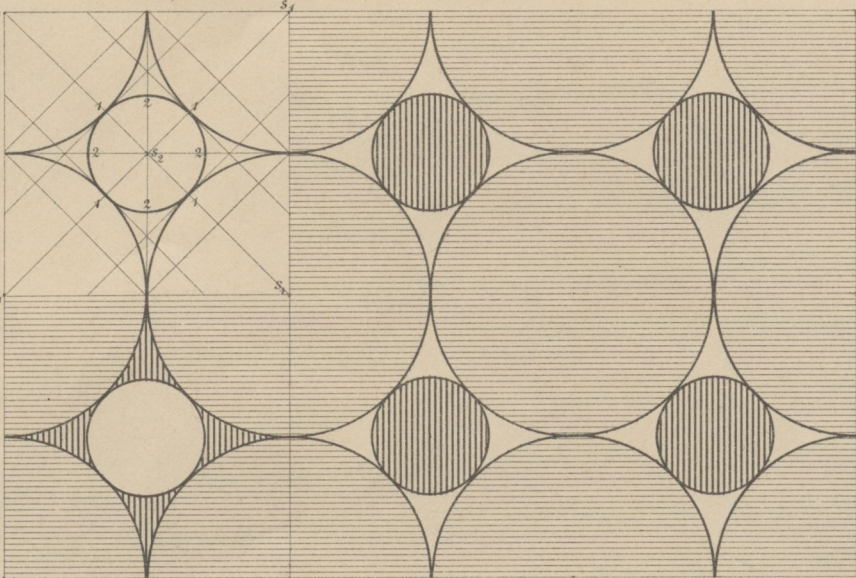


77 ab.

77 c.

76 a, b.

76 c.

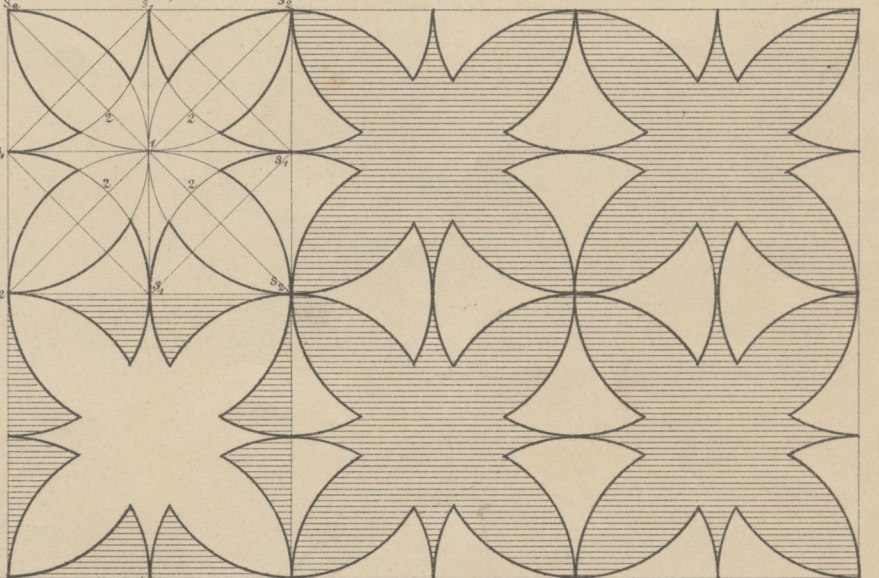
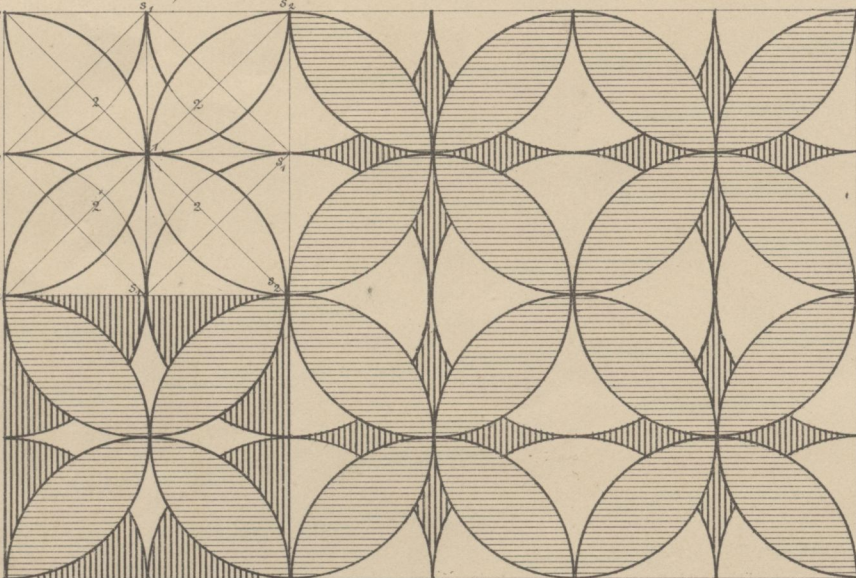


78 a, b.

78 c.

79 a, b.

79 c.

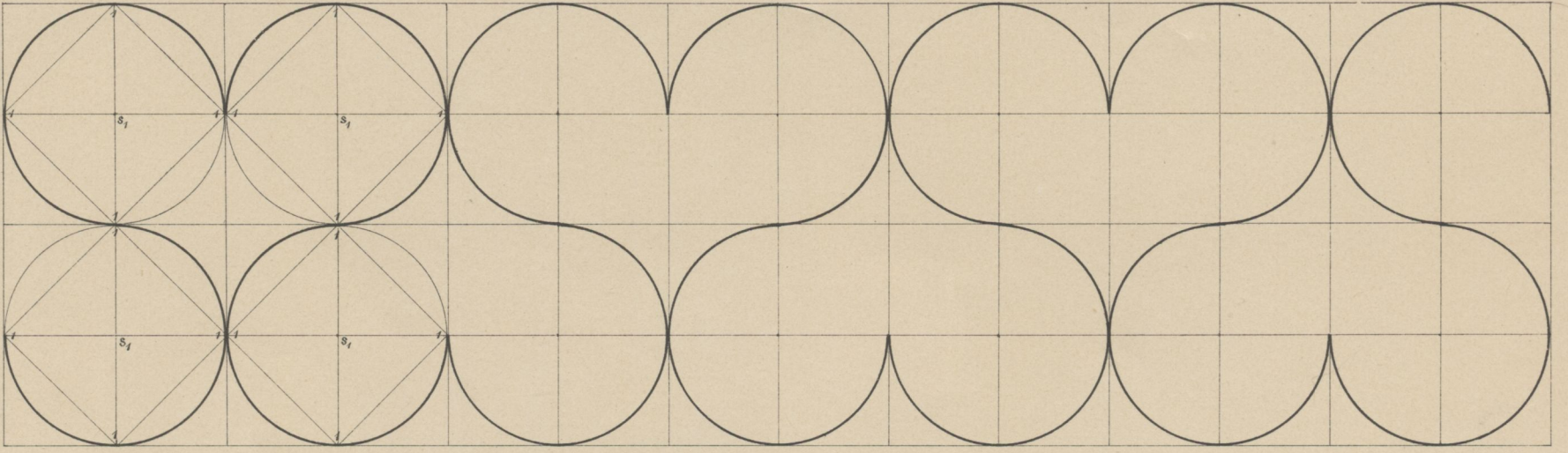


7251

BIBLIOTEKA  
Państwowej Szkoły Przemysłowej  
w Krakowie.

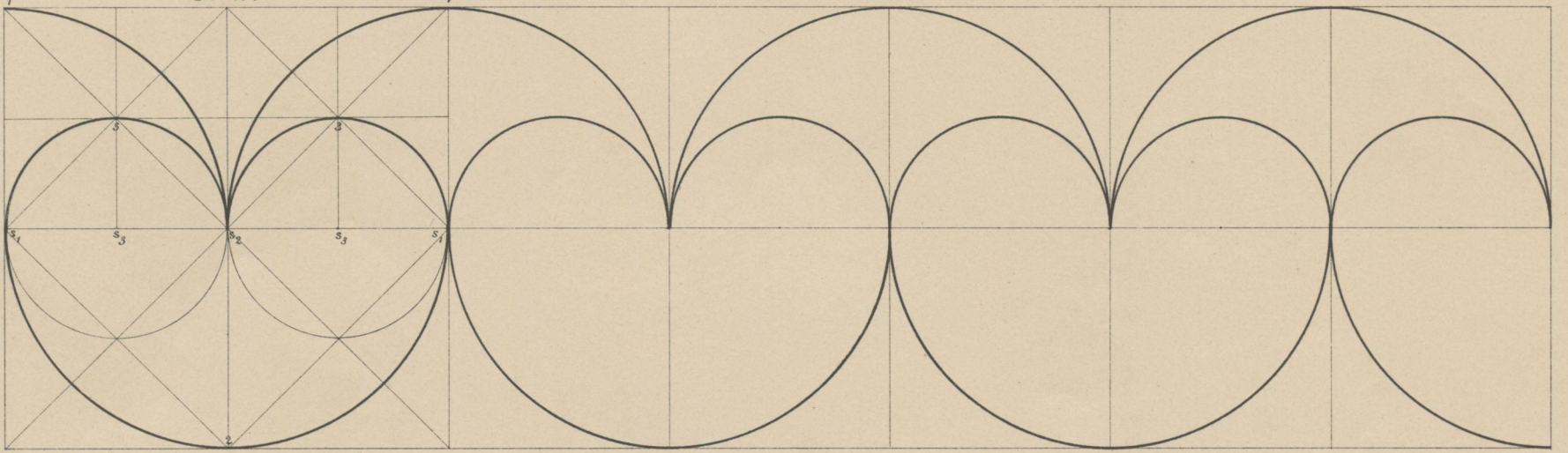
80 a.

80 b.



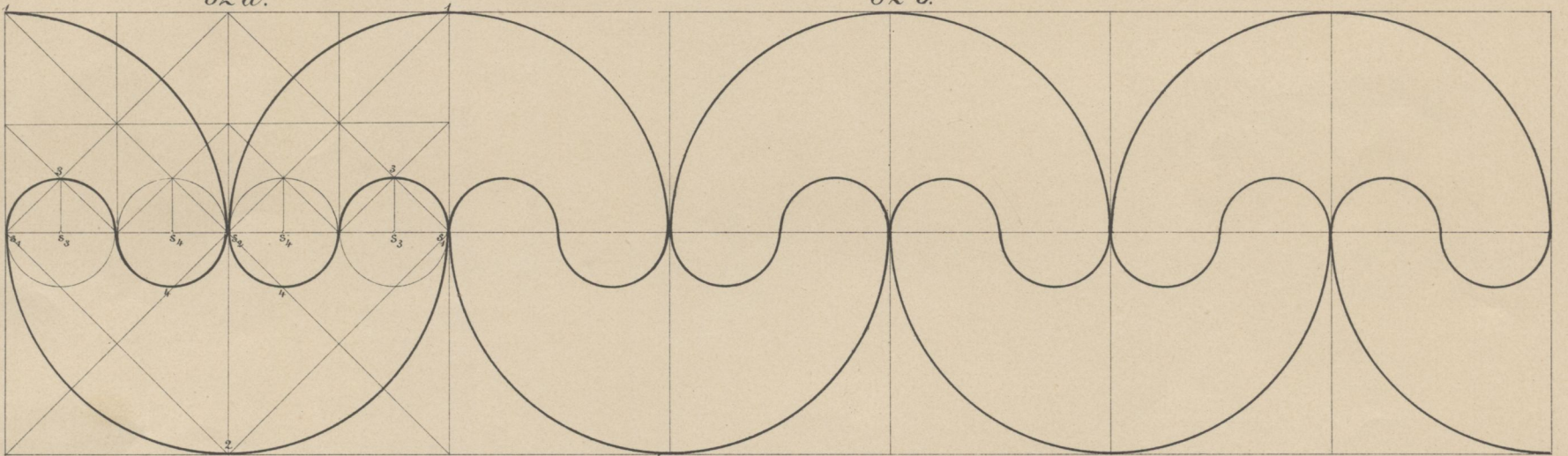
81 a.

81 b.



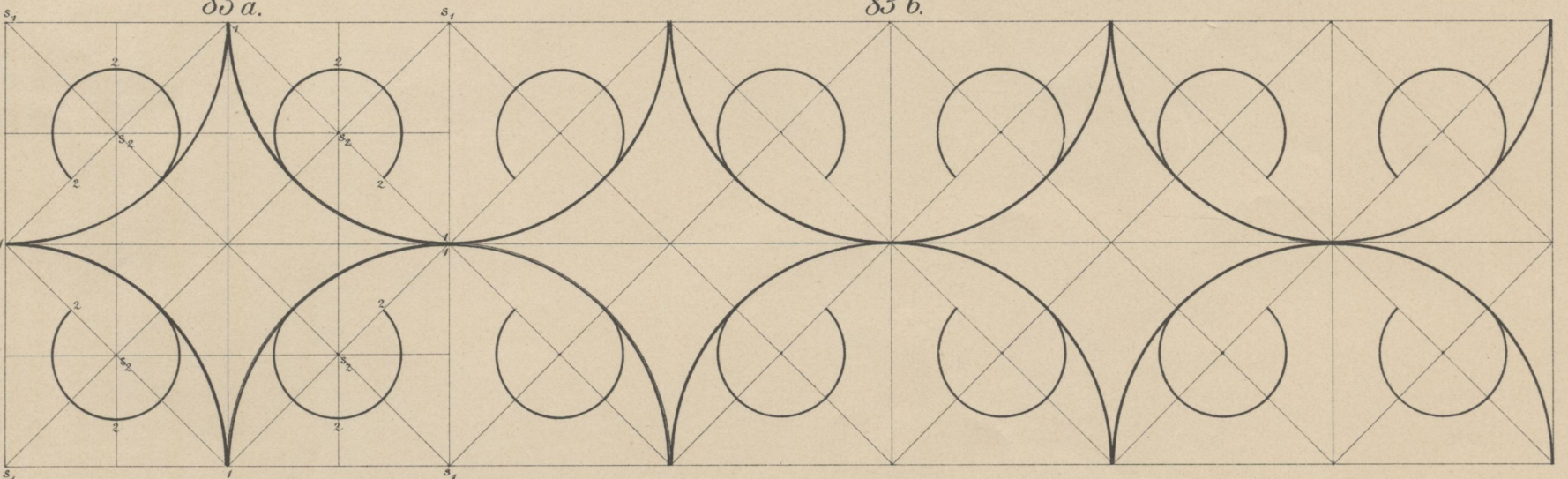
82 a.

82 b.



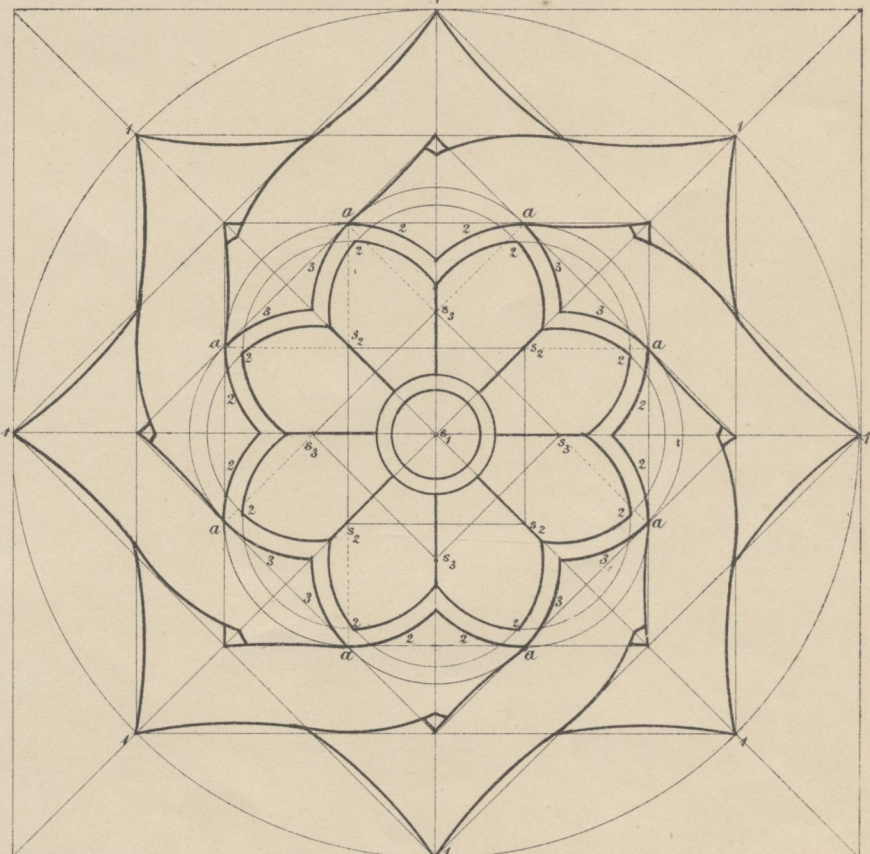
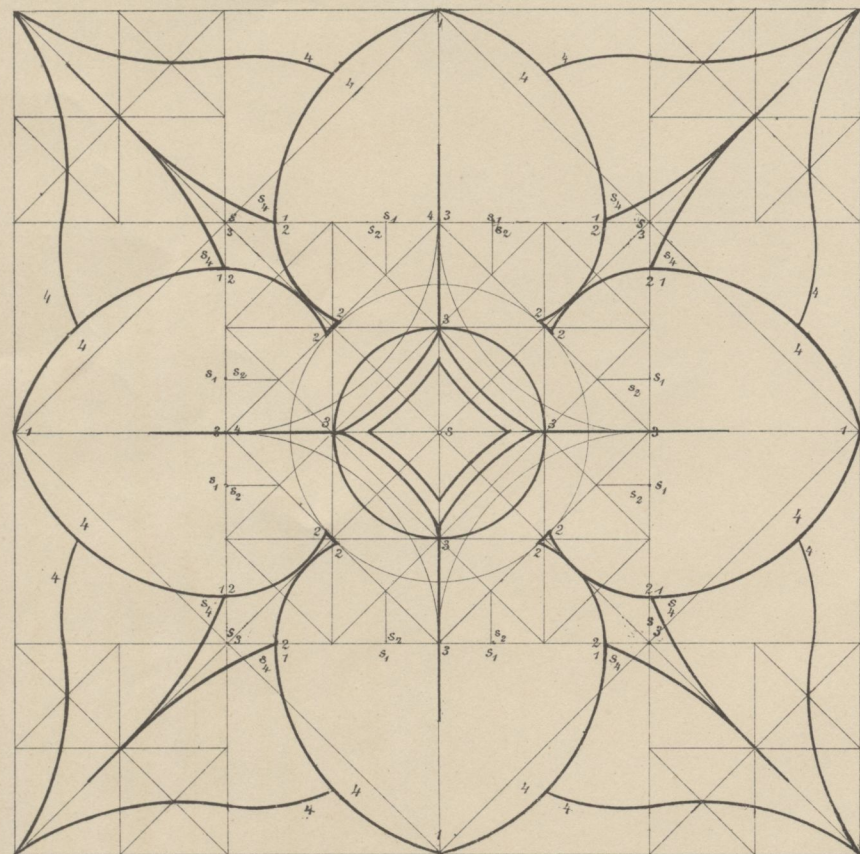
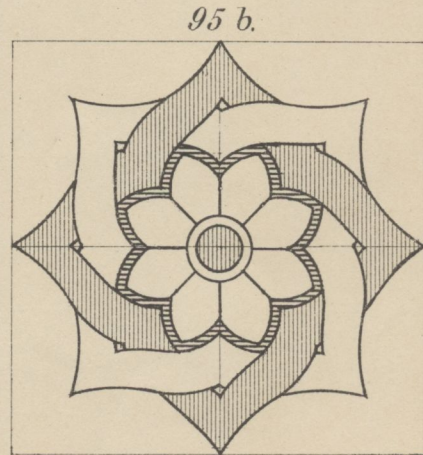
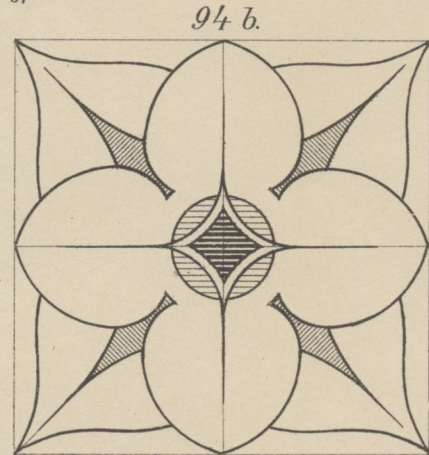
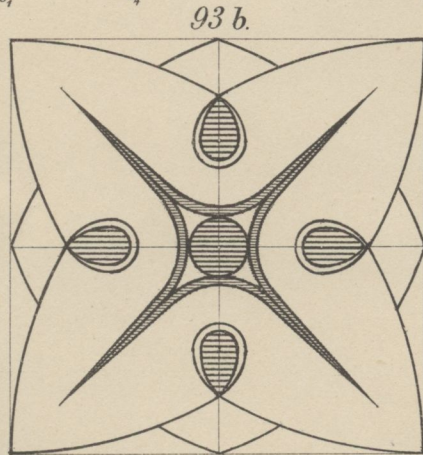
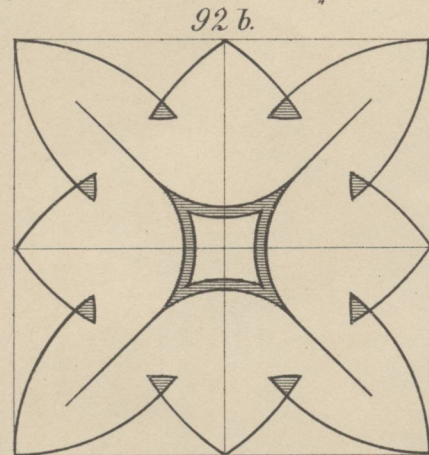
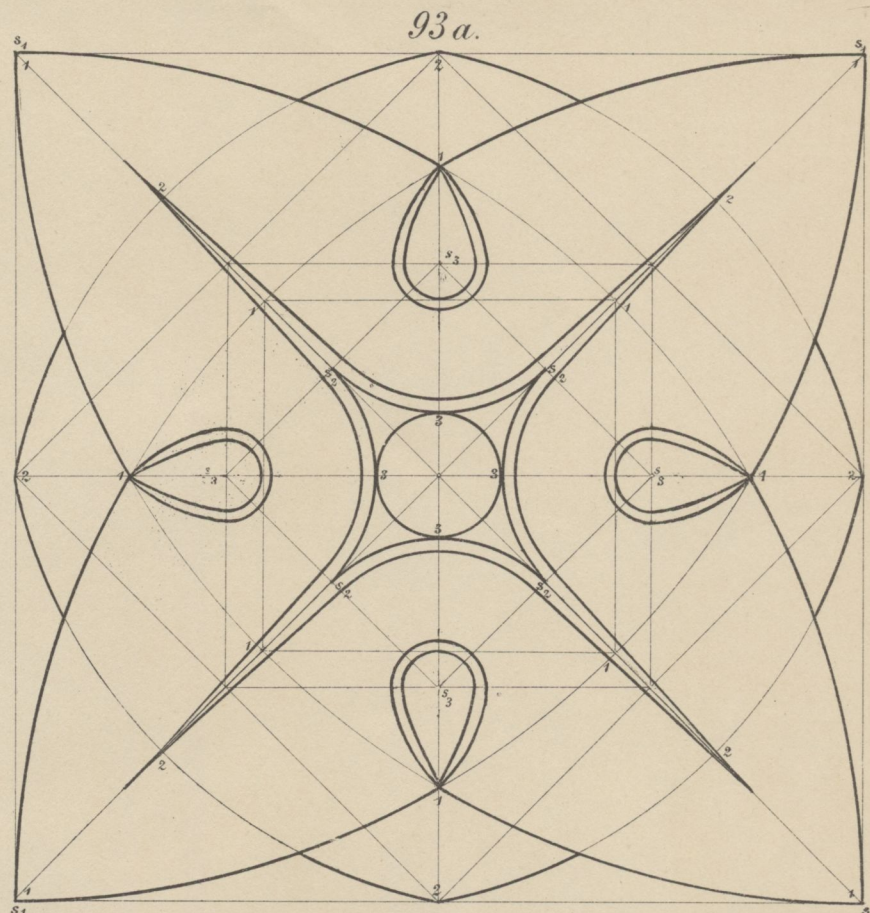
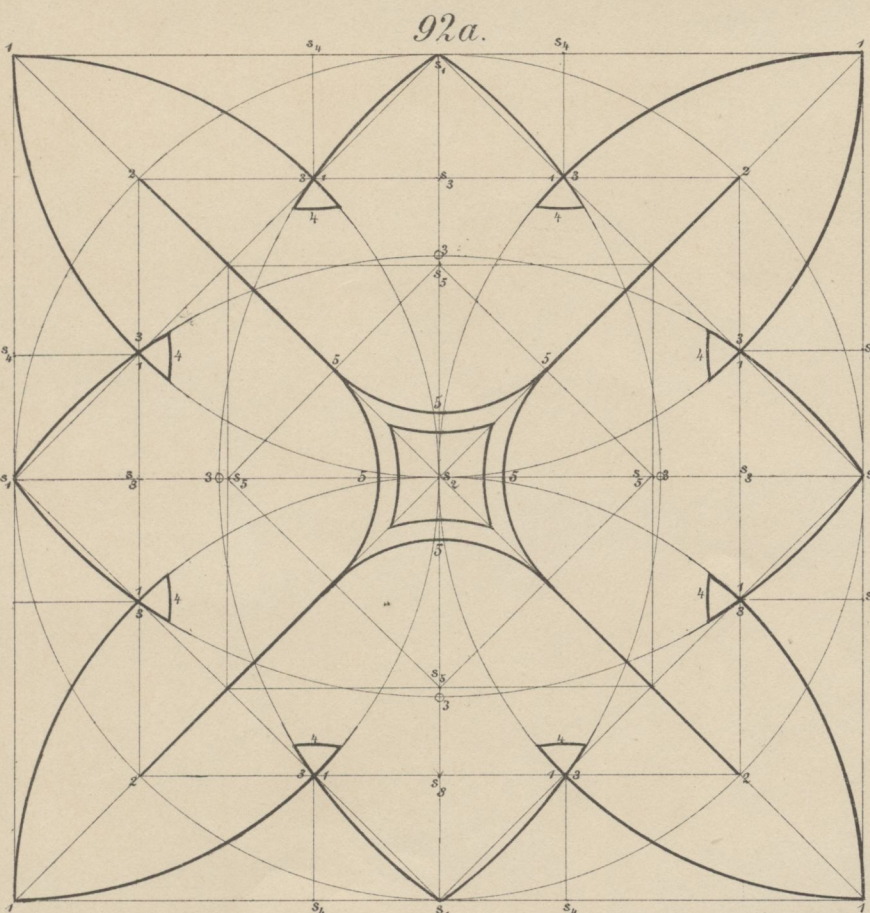
83 a.

83 b.



7251

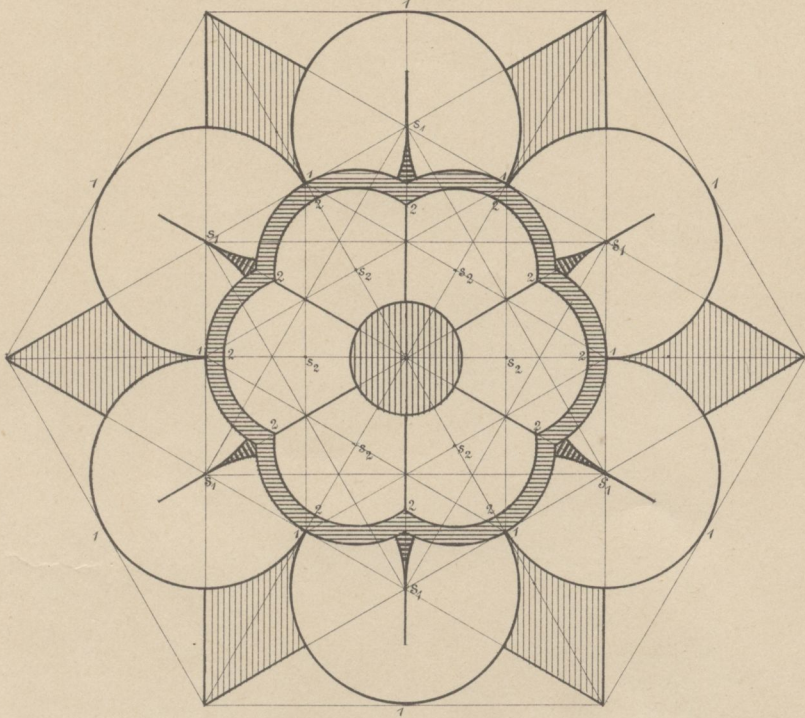
**BIBLIOTEKA**  
**Państwowej Szkoły Przemysłowej**  
**w Krakowie.**



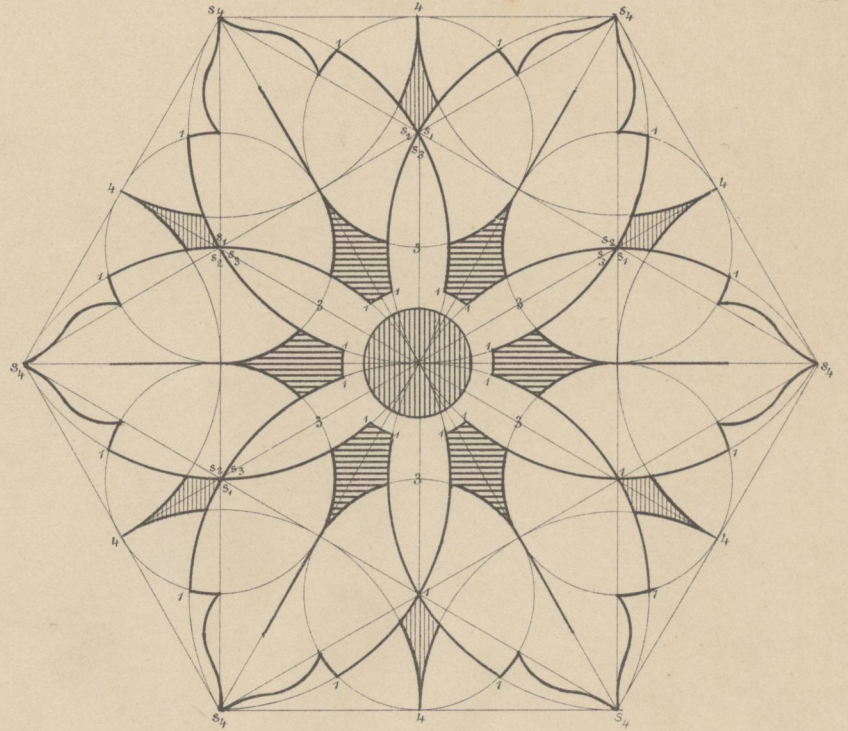
7251

BIBLIOTEKA  
Państwowej Szkoły Przemysłowej  
w Krakowie.

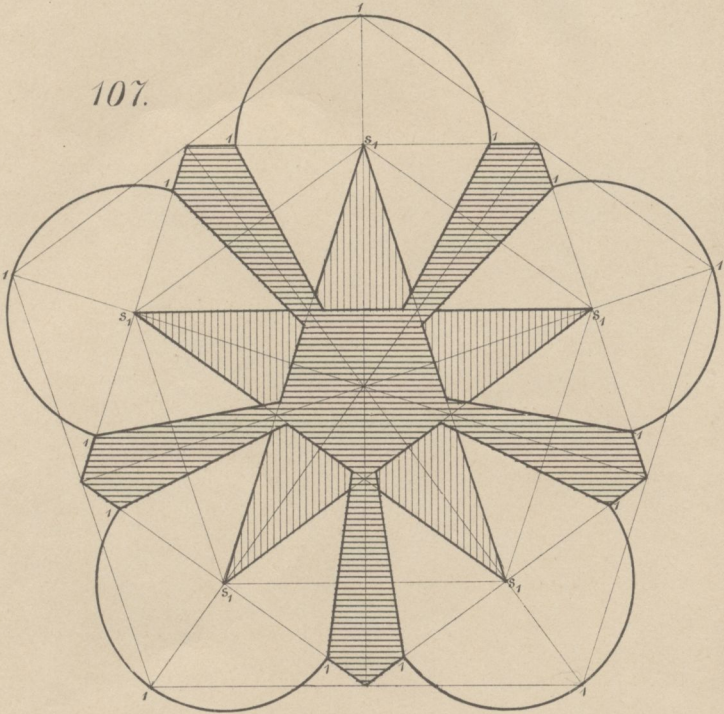
105.



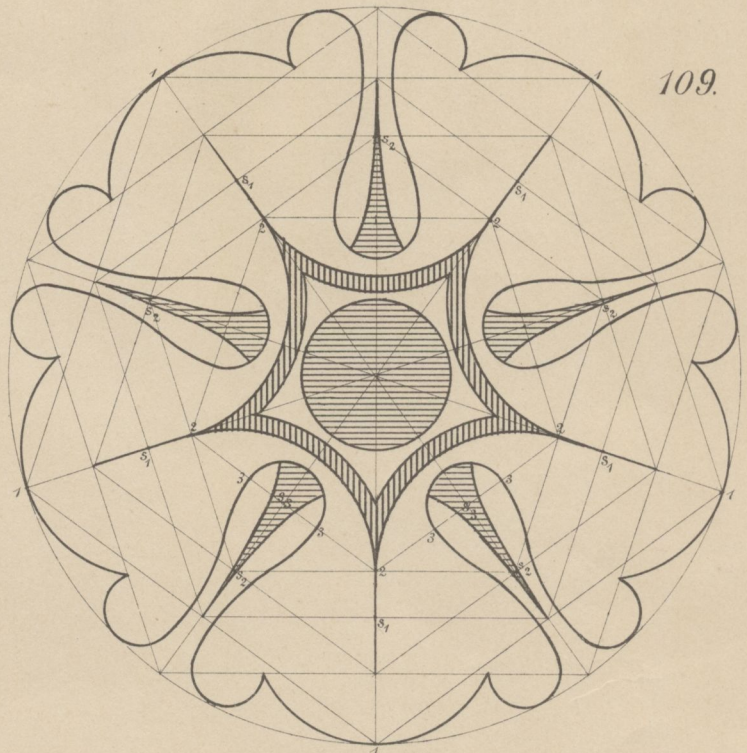
106.



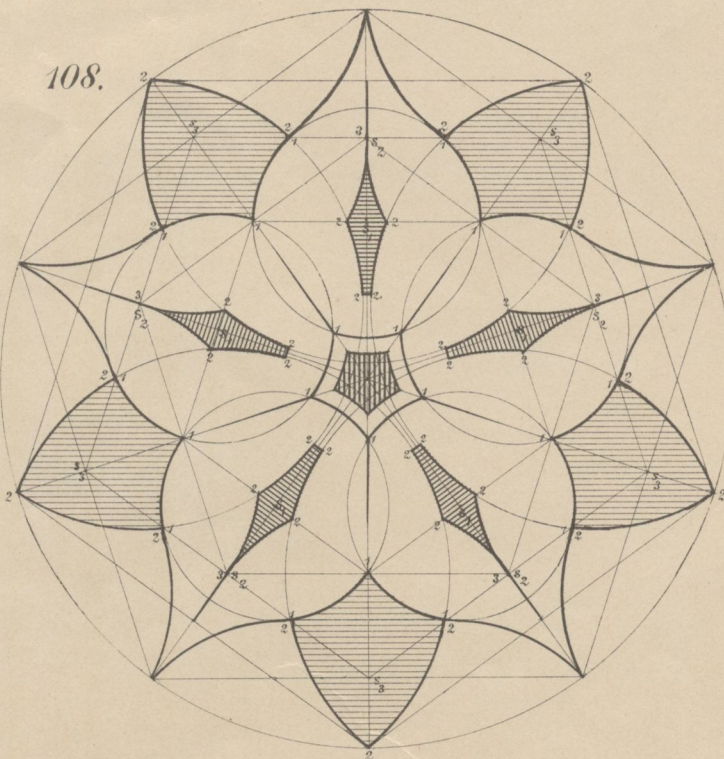
107.



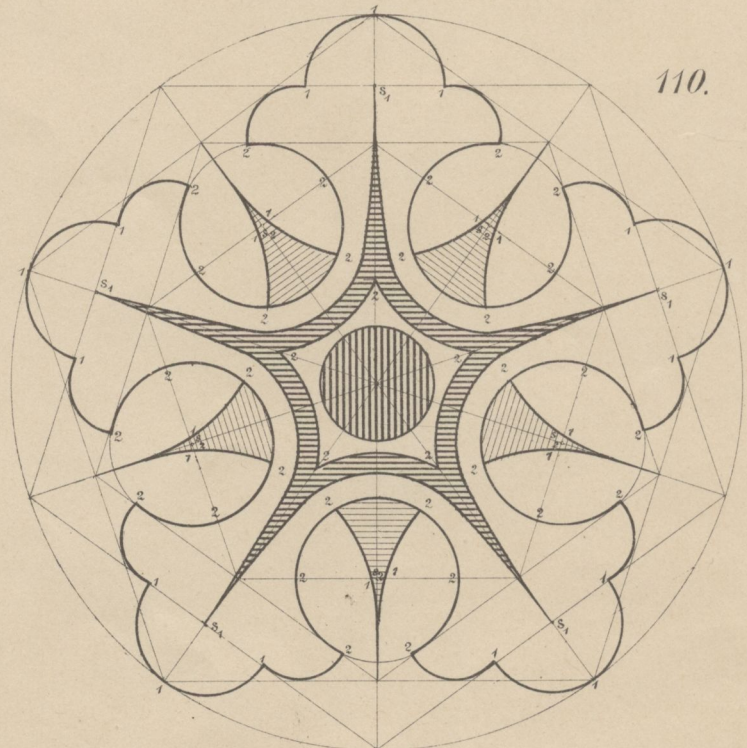
109.



108.



110.



7251

BIBLIOTEKA  
Państwowej Szkoły Przemysłowej  
w Krakowie.





Biblioteka Politechniki Krakowskiej



10000250941



Biblioteka Politechniki Krakowskiej  
  
**IV-301864**

Biblioteka Politechniki Krakowskiej  
  
100000250941

Biblioteka Politechniki Krakowskiej  
  
**IV-301865**

Biblioteka Politechniki Krakowskiej  
  
100000250942

WYDZIAŁY POLITECHNICZNE KR. KÓW  
~~BIBLIOTEKA GŁÓWNA~~  
~~IV 14203~~  
L. inw. 14203  
Kdn., Czapskich 4 — 678. 1. XII. 52. 10.000